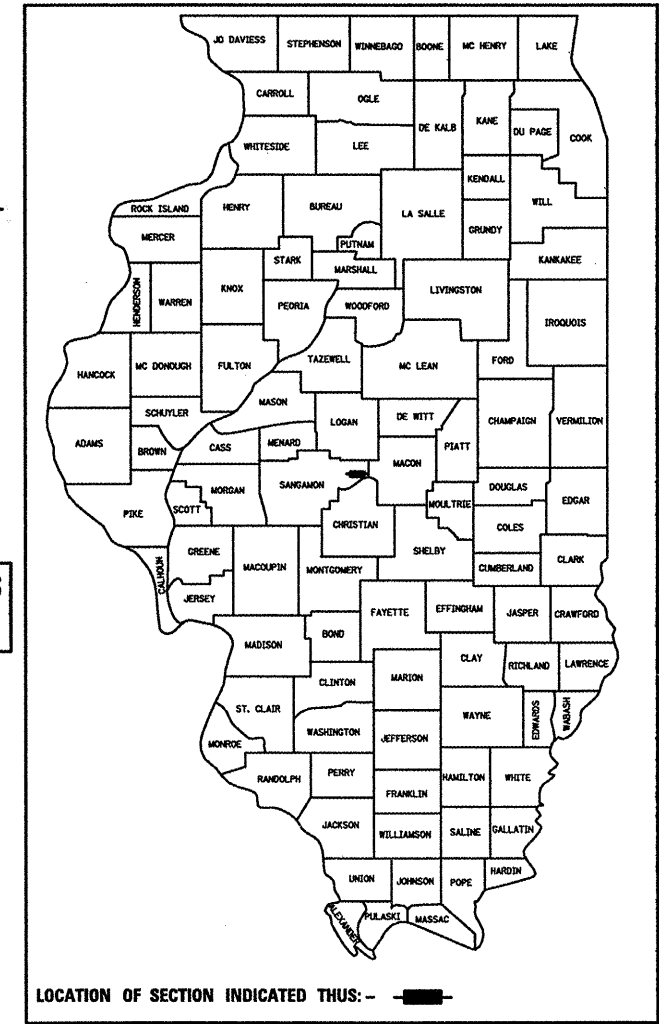


F.A.I. RTE.	SECTION	COUNTY	TOTAL SHEETS	SHEET NO.
72	*, **	SANGAMON	61	1
		ILLINOIS	CONTRACT NO. 72910	

• (84-10-2)RS-3  
 •• (84-10-2)RS-4

D-96-539-04



LOCATION OF SECTION INDICATED THIS: -

STATE OF ILLINOIS  
 DEPARTMENT OF TRANSPORTATION  
 DIVISION OF HIGHWAYS

SUBMITTED Feb 11 20 10  
Rep 2 Park  
 DEPUTY DIRECTOR OF HIGHWAYS, REGION ENGINEER

March 19 20 10  
Scott E. Stitt, P.E. /a  
 ASSISTANT ENGINEER OF DESIGN AND ENVIRONMENT

March 19 20 10  
Christine M. Reed /a  
 DIRECTOR OF HIGHWAYS, CHIEF ENGINEER

PRINTED BY THE AUTHORITY  
 OF THE STATE OF ILLINOIS

DISTRICT 6, SPRINGFIELD

DRB 2-10-2010  
 DAVID R. BOOHER ILLINOIS P.E. 062-043769 DATE  
 EXPIRES 11/30/2011

STATE OF ILLINOIS  
 DEPARTMENT OF TRANSPORTATION  
 DIVISION OF HIGHWAYS  
**PROPOSED  
 HIGHWAY PLANS**

F.A.I. ROUTE 72 (I-72)  
 SECTION (84-10-2)RS-3, (84-10-3)RS-4

SANGAMON COUNTY

JOB No.  
 C-96-141-10  
 4<sup>TH</sup> P.M.

END IMPROVEMENTS  
 STA. 1968+00 CH 19

SN 084-0159  
 CH 34 OVER I-72  
 2 SPAN BRIDGE  
 STA 455+92.17

END IMPROVEMENTS  
 STA. 538+00 I-72

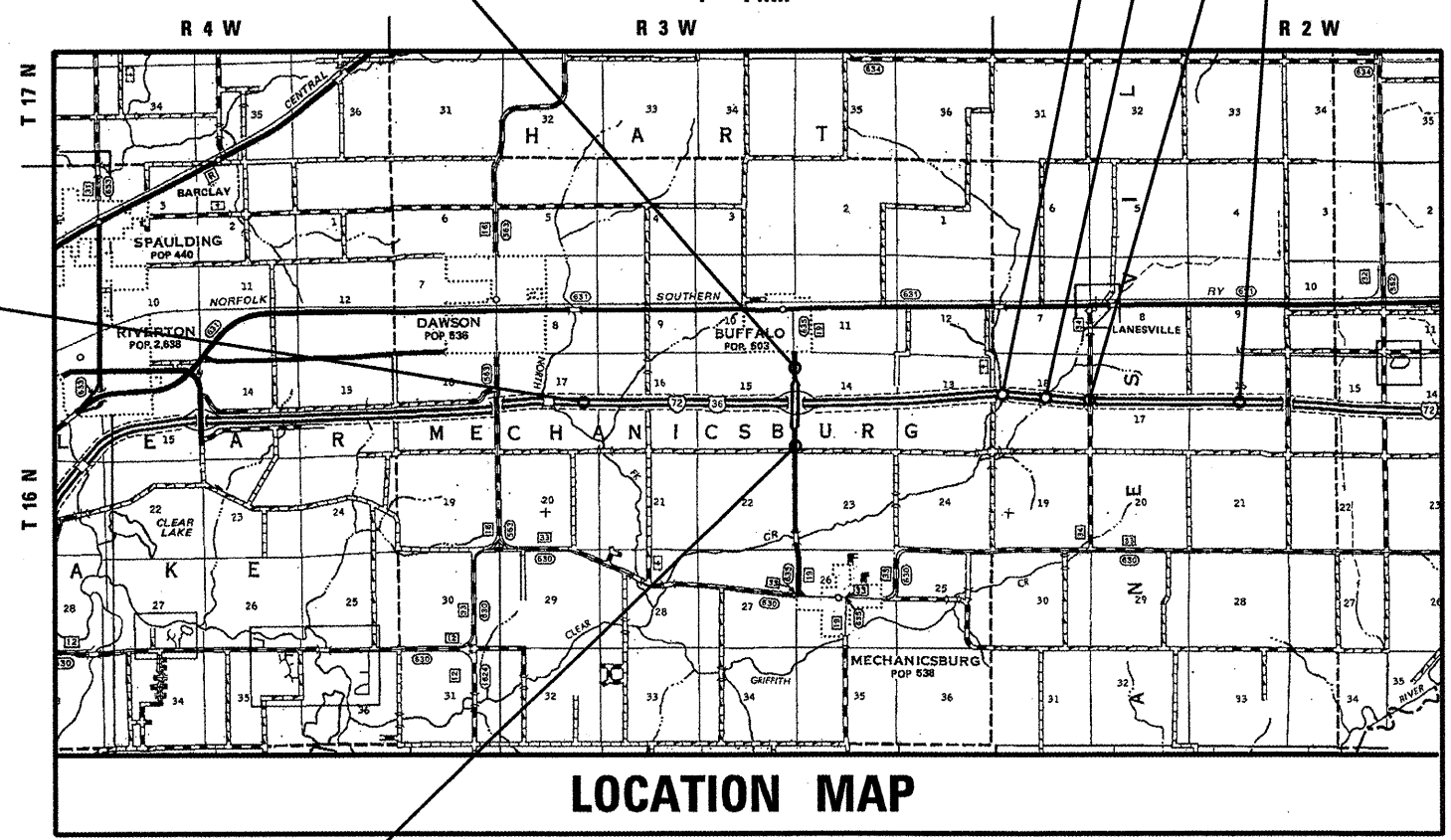
SN084-0157 WB+084-0158 EB  
 I-72 OVER CLEAR CREEK  
 3 SPAN DUAL BRIDGES  
 STA 406+40

SN 084-2006  
 I-72 OVER CLEAR CREEK TRIB  
 DOUBLE 12 X 8 BOX CULVERT  
 STA 430+85

SHEET NO.	DESCRIPTION
1	COVER SHEET
2	GENERAL NOTES
3 - 12	SUMMARY OF QUANTITIES
13 - 21	SCHEDULE OF QUANTITIES
22 - 24	TYPICAL SECTIONS
25 - 28	ALIGNMENT & TIES
29 - 46	PLAN SHEETS
47	BRIDGE APPROACH SHOULDER PAVEMENT DRAIN DETAIL
48 - 50	MAINTENANCE OF TRAFFIC PLANS
51 - 61	STRUCTURE PLANS

IDOT HIGHWAY STANDARDS			
000001-05	604106-01	642001-01	701411-06
420001-07	606001-04	701101-02	701451-01
420401-08	606301-04	701106-02	701456
442001-04	630001-08	701201-03	701901-01
442101-07	630301-05	701306-02	704001-06
482011-03	631031-08	701400-04	720011-01
542301-02	635001-01	701401-05	780001-02
604001-03	635006-03	701402-07	781001-03
604101-01	635011-02	701406-05	

BEGIN IMPROVEMENTS  
 STA. 171+09 I-72



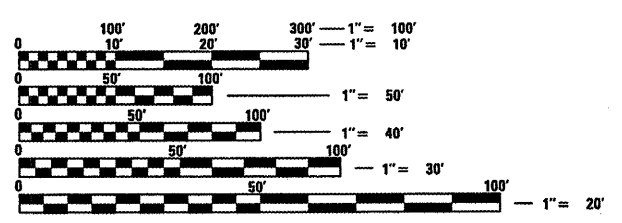
LOCATION MAP

BEGIN IMPROVEMENTS  
 STA. 1932+00 CH 19

APPROXIMATE SCALE: 0 2 4 MILES

I-72 TOTAL LENGTH = 36,691.0 FEET = 6.95 MILES (I-72)  
 NET LENGTH OF PROJECT = 36,691.0 FEET = 6.95 MILES  
 I-72 HIGHWAY CLASSIFICATION = INTERSTATE  
 ADT = 11,800  
 CH 19 TOTAL LENGTH = 3,600 FEET = 0.68 MILES

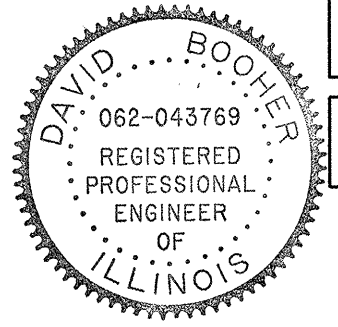
**ie** CONSULTANTS, INC.  
 8420 SOUTH SIXTH STREET  
 SPRINGFIELD, ILLINOIS 62712  
 TEL. (217) 529-8027  
 FAX (217) 529-4543  
 WWW.IE-CONSULTANTS.COM



FULL SIZE PLANS HAVE BEEN PREPARED USING STANDARD ENGINEERING SCALES. REDUCED SIZED PLANS WILL NOT CONFORM TO STANDARD SCALES. IN MAKING MEASUREMENTS ON REDUCED PLANS, THE ABOVE SCALES MAY BE USED.

CALL **J.U.L.I.E.** (JOINT UTILITY LOCATING INFORMATION FOR EXCAVATORS)  
 48 Hours (2 working days) Before You Dig.  
 TOLL FREE: 1 (800) 892-0123 OR 811

CONTRACT NO. 72910



PROJECT ENGINEER: JOHN C. NEGANARD (217) 782-6990 / SENIOR SQUAD LEADER: VICTOR YOUNG (217) 557-7897