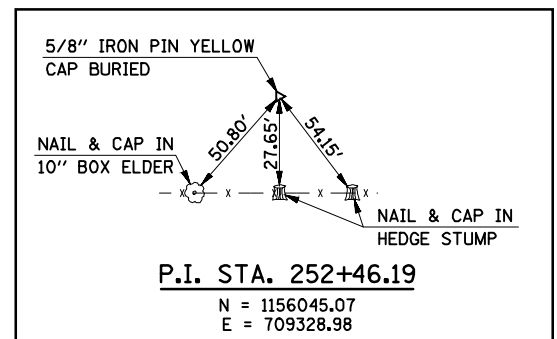
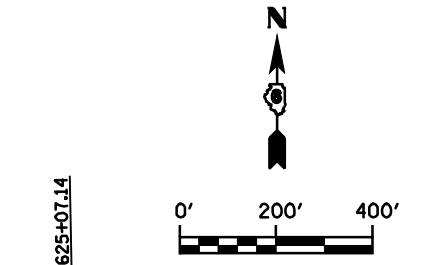
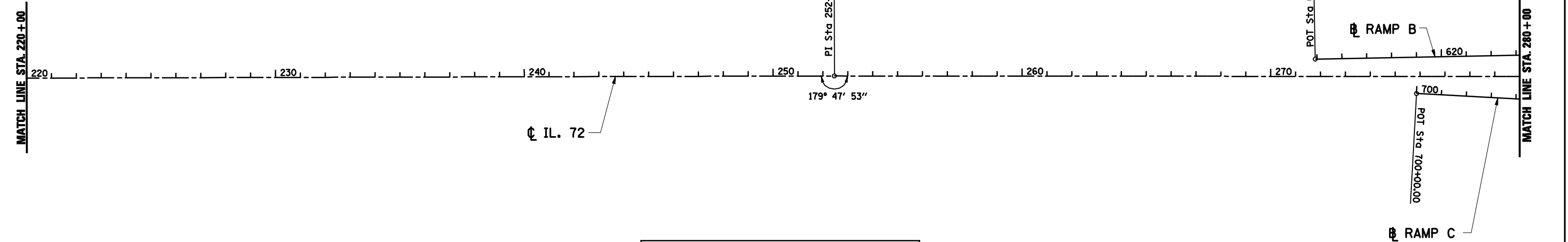
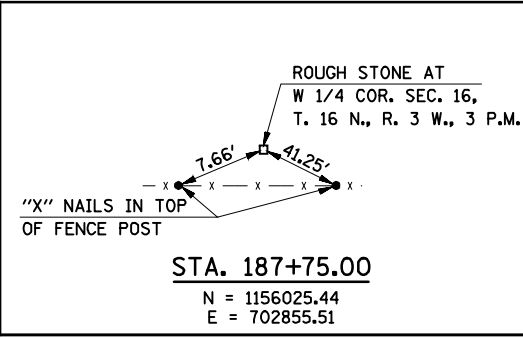
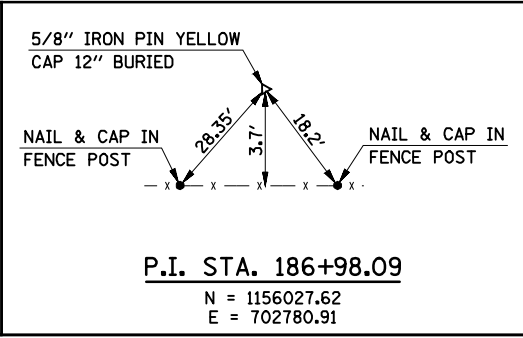
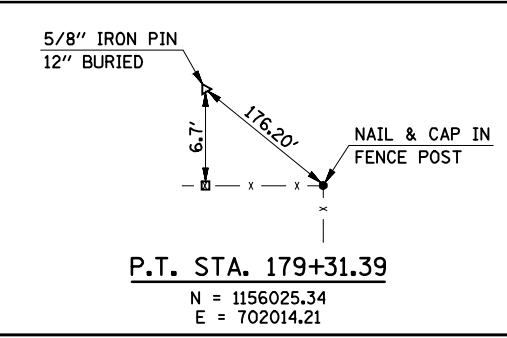
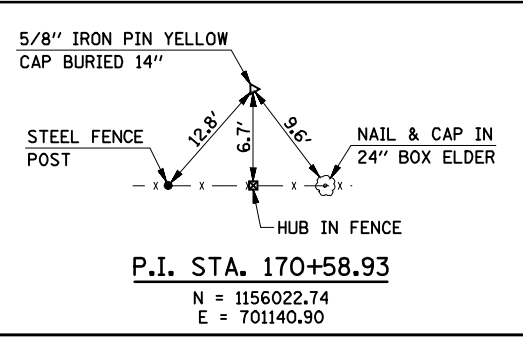
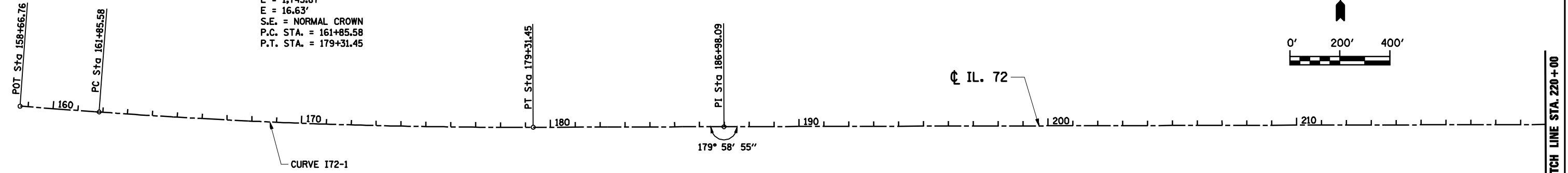
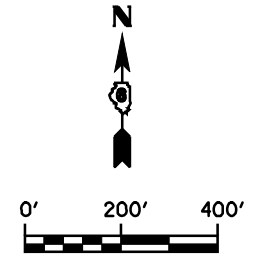


PROP. CURVE I72-1
 PI STA. = 170+58.94
 $\Delta = 4^\circ 21' 53''$ (LT)
 $D = 0^\circ 15' 00''$
 $R = 22,918.31'$
 $T = 873.36'$
 $L = 1,745.87'$
 $E = 16.63'$
 $S.E. = \text{NORMAL CROWN}$
 $P.C. STA. = 161+85.58$
 $P.T. STA. = 179+31.45$



FILE NAME =	USER NAME = laughlinr1	DESIGNED -	REVISED -
e:\pwwork\pwidot\LAUGHLINRL\0184389\7016AT01.SHT		DRAWN - AAD	REVISED -
		CHECKED - JAC	REVISED -
		DATE - 06/11/07	REVISED -

**STATE OF ILLINOIS
DEPARTMENT OF TRANSPORTATION**

**I-72 ALIGNMENT
STA. 159 + 00 TO STA. 280 + 00**

SCALE: SHEET NO. OF SHEETS STA. TO STA.

F.A.I. RTE.	SECTION	COUNTY	TOTAL SHEETS	SHEET NO.
72	(84-10-2)RS-3, (84-10-3)RS-4	SANGAMON	61	25
CONTRACT NO. 72910				
FED. ROAD DIST. NO. 2 ILLINOIS FED. AID PROJECT				