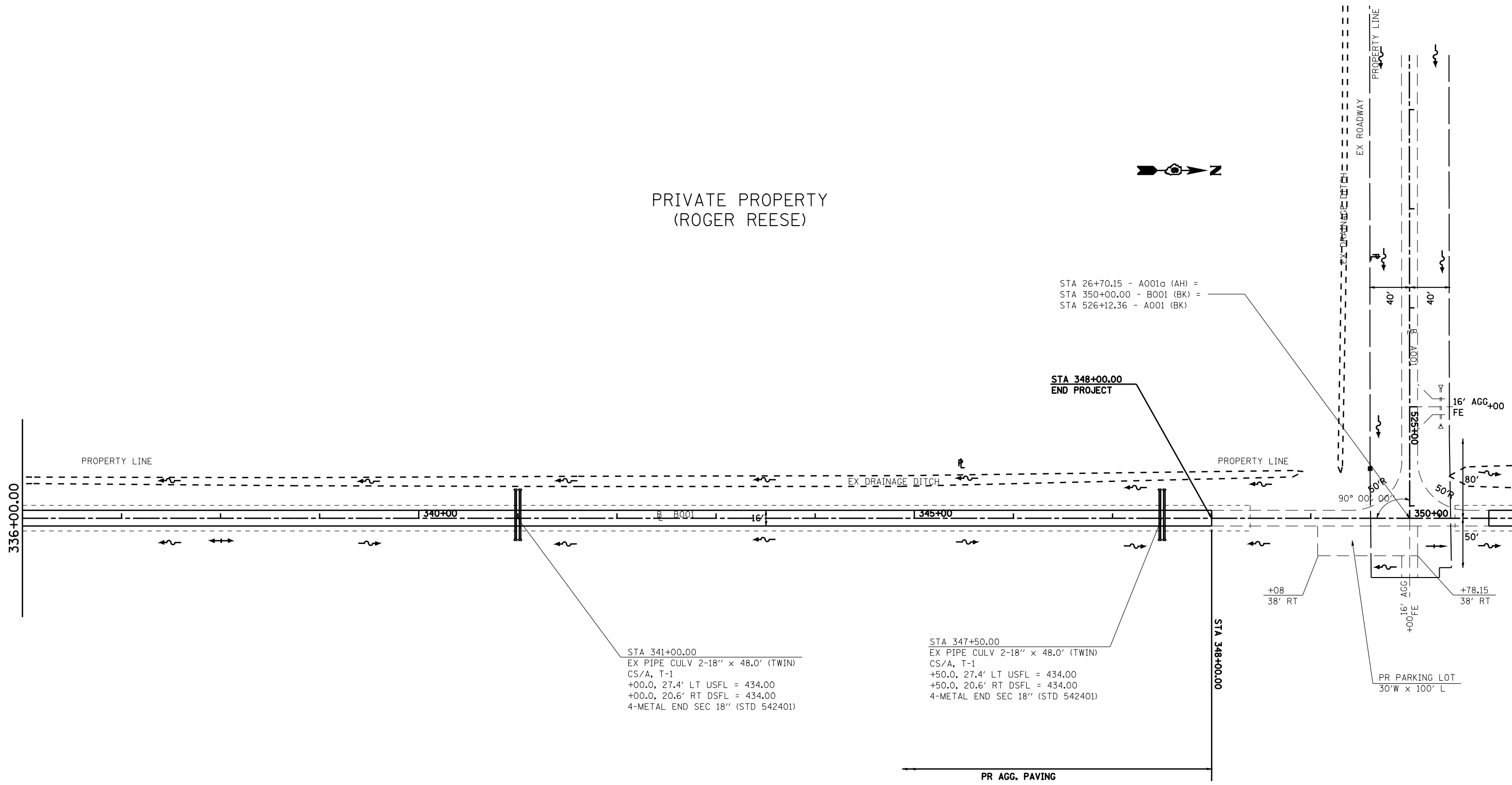


PRIVATE PROPERTY  
(ROGER REESE)



STA 26+70.15 - A001a (AH) =  
STA 350+00.00 - B001 (BK) =  
STA 526+12.36 - A001 (BK)

STA 348+00.00  
END PROJECT



STA 341+00.00  
EX PIPE CULV 2-18" x 48.0' (TWIN)  
CS/A, T-1  
+00.0, 27.4' LT USFL = 434.00  
+00.0, 20.6' RT DSFL = 434.00  
4-METAL END SEC 18" (STD 542401)

STA 347+50.00  
EX PIPE CULV 2-18" x 48.0' (TWIN)  
CS/A, T-1  
+50.0, 27.4' LT USFL = 434.00  
+50.0, 20.6' RT DSFL = 434.00  
4-METAL END SEC 18" (STD 542401)

+08  
38' RT  
+00 FE  
+16' FE  
+78.15  
38' RT

PR PARKING LOT  
30'W x 100' L

PR AGG. PAVING

FIELD # 12  
STATE OF ILLINOIS

• LAGRANGE WETLAND BANK  
•• D6 WETLAND MITIGATION 4

FILE NAME =	USER NAME = laughlinr1	DESIGNED -	REVISED -
et:\pw\work\PWIDOT\LAUGHLINRL\dms28174\SttPlanB001.dgn		DRAWN - EJW	REVISED -
	PLOT SCALE = 100.0000' / IN.	CHECKED - JCN	REVISED -
	PLOT DATE = Feb-03-2010 04:32:25PM	DATE -	REVISED -

STATE OF ILLINOIS  
DEPARTMENT OF TRANSPORTATION

PLAN SHEET - B001

SCALE: SHEET NO. OF SHEETS STA. TO STA.

F.A.P. RTE.	SECTION	COUNTY	TOTAL SHEETS	SHEET NO.
•	••	BROWN	37	31
CONTRACT NO. 72969				
FED. ROAD DIST. NO. ILLINOIS FED. AID PROJECT				