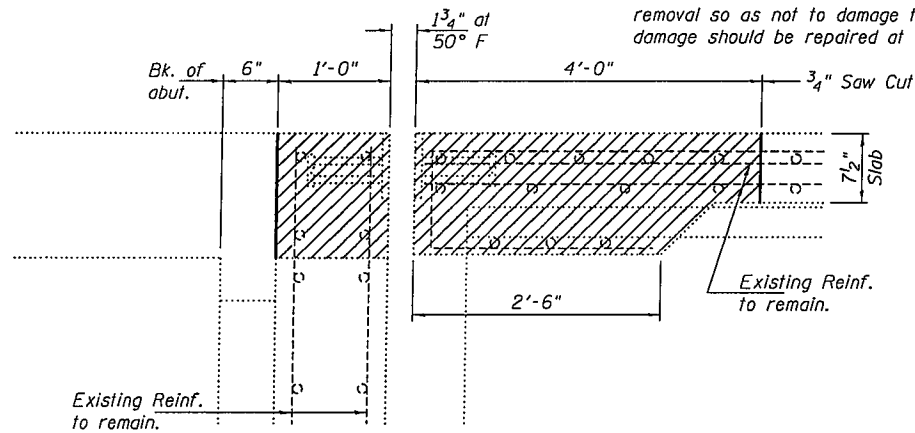


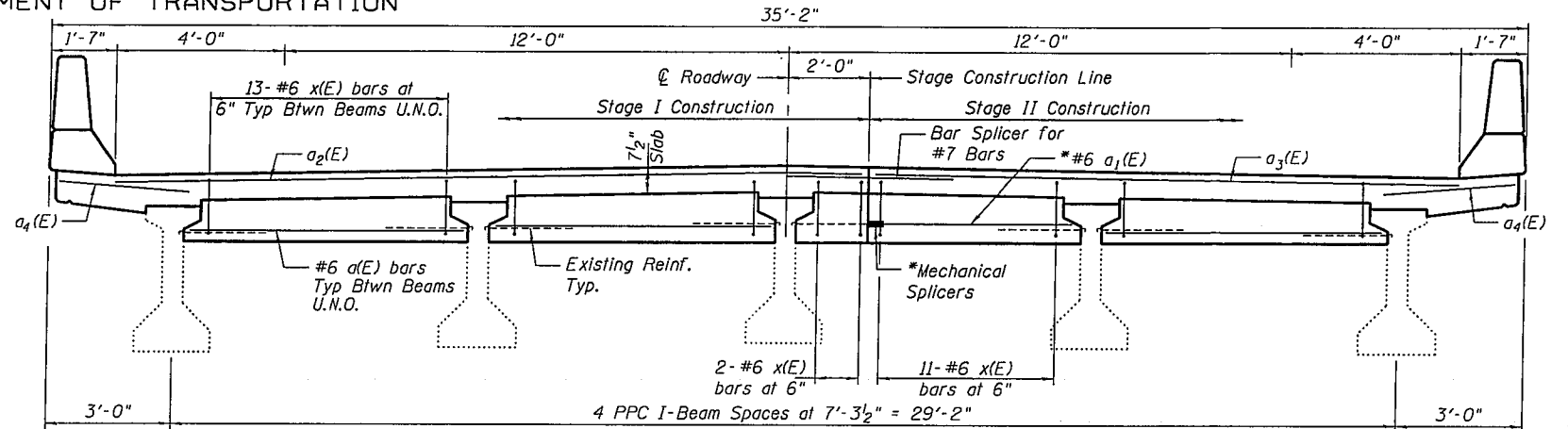
STATE OF ILLINOIS
DEPARTMENT OF TRANSPORTATION

The Contractor shall use extreme care during concrete removal so as not to damage the PPC I-Beam. Any damage should be repaired at the Contractor's Expense.

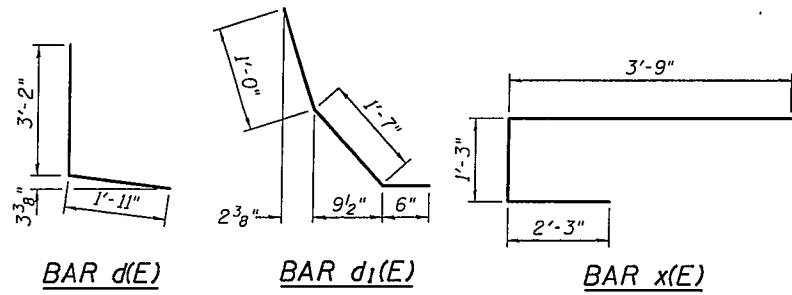


SECTION A-A
(Near Centerline of Roadway)

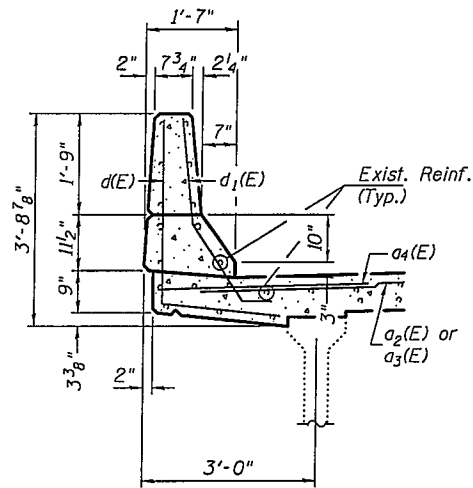
*Attach to existing reinf. with mechanical splicers. Existing reinf. to extend 6" into the removal area to allow attachment of the mechanical splicers.



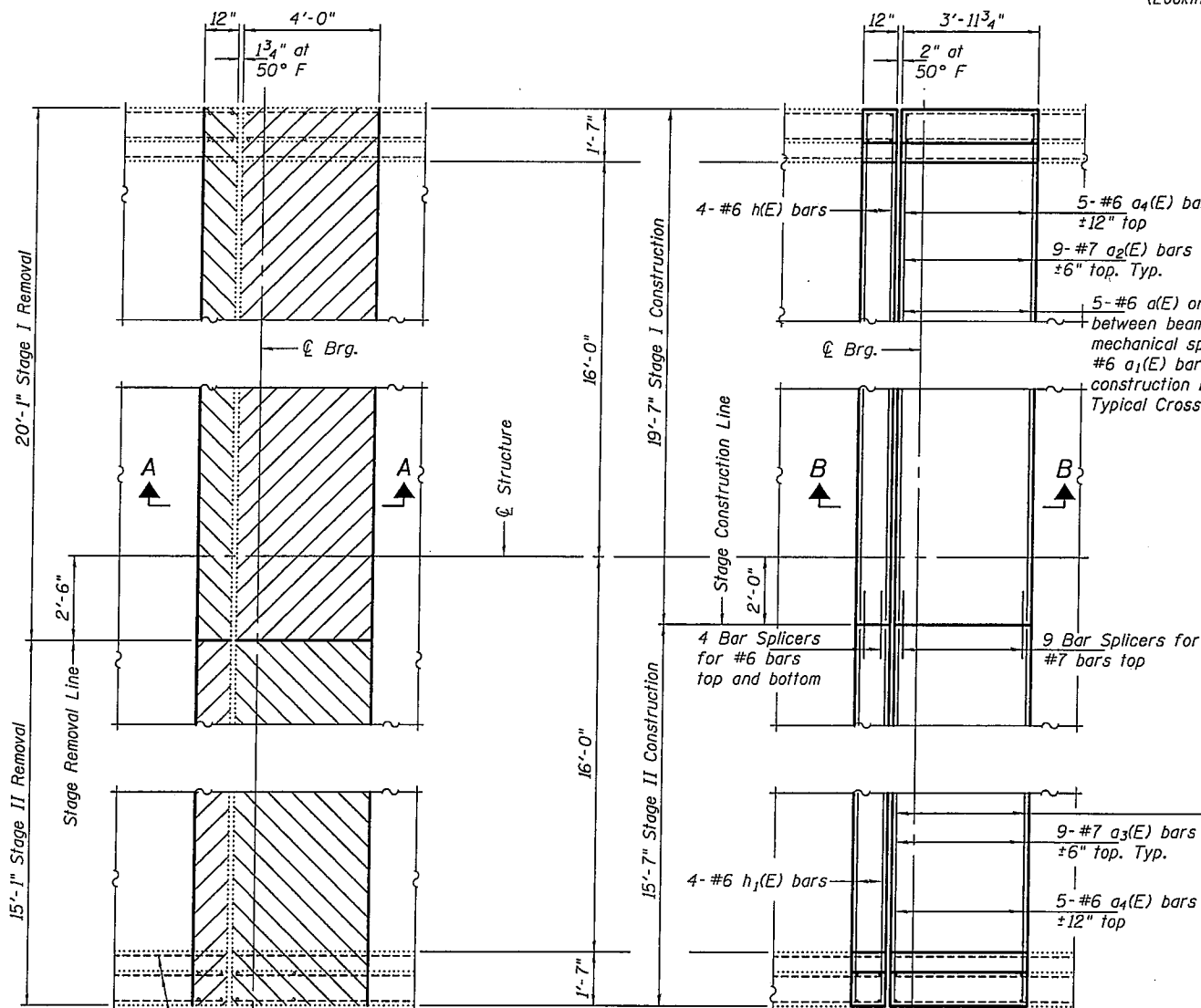
TYPICAL CROSS SECTION
(Looking South)



BAR d(E) BAR d1(E) BAR x(E)



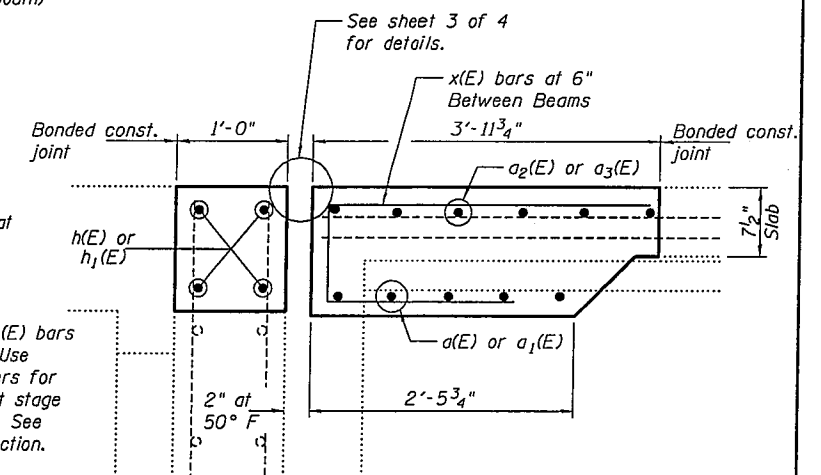
TYPICAL PARAPET SECTION



REMOVAL PLAN
(N. Abut. Shown)
(S. Abut. similar)



REPLACEMENT PLAN
(N. Abut. Shown)
(S. Abut. similar)



SECTION B-B
(Near Centerline of Roadway)

BILL OF MATERIAL

Bar	No.	Size	Length	Shape
a(E)	30	#6	6'-6"	—
a1(E)	10	#6	4'-9"	—
a2(E)	18	#7	18'-1"	—
a3(E)	18	#7	14'-1"	—
a4(E)	20	#6	4'-0"	—
d(E)	28	#4	5'-1"	L
d1(E)	28	#5	3'-1"	—
h(E)	8	#6	19'-5"	—
h1(E)	8	#6	15'-5"	—
x(E)	104	#6	7'-3"	—
Concrete Removal			Cu. Yd.	20.7
Concrete Superstructure			Cu. Yd.	20.6
Reinforcement Bars, Epoxy Coated			Lbs.	3,300

Notes:
Hatched areas indicate removal.

DETAILS
SN 034-0042

DESIGNED	G.G.E.
CHECKED	V.H.V.
DRAWN	Drew Christopher
CHECKED	G.G.E. V.H.V.

EXAMINED	March 22, 2010
PASSED	Carl P. [Signature] ENGINEER OF STRUCTURAL SERVICES
	Ralph E. [Signature] ENGINEER OF BRIDGES AND STRUCTURES

SHEET NO. 2 4 SHEETS	F.A.P. RTE. 514	SECTION 107-RS-5	COUNTY Hancock	TOTAL SHEETS 30	SHEET NO. 28
	CONTRACT NO. 72R28				
FED. ROAD DIST. NO.		ILLINOIS FED. AID PROJECT			