

F.A.P. RTE.	SECTION	COUNTY	TOTAL SHEETS	SHEET NO.
566	(121, 1NRHM)RS-3	SCOTT	35	1
		ILLINOIS	CONTRACT NO. 72C34	

**STATE OF ILLINOIS**  
**DEPARTMENT OF TRANSPORTATION**  
**DIVISION OF HIGHWAYS**

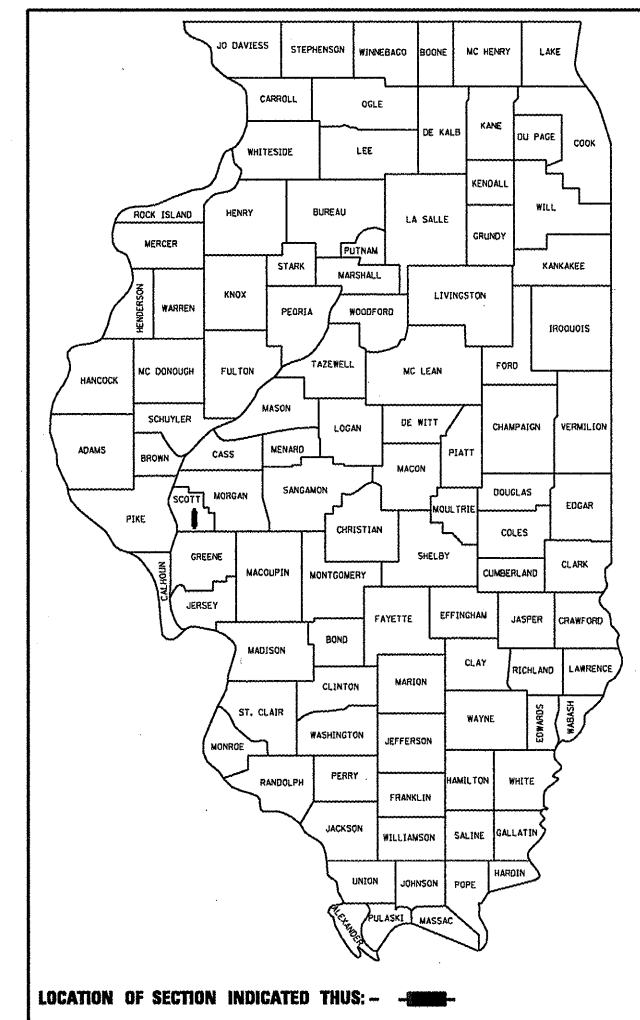
# PROPOSED HIGHWAY PLANS

**FAP ROUTE 566 (IL 106)**  
**SECTION (121, 1NRHM)RS-3**

**TYPE of IMPROVEMENT**  
**SCOTT COUNTY**

C-96-009-09

D-96-009-09



**INDEX OF SHEETS**

- 1 COVER SHEET
- 2 GENERAL NOTES
- 3-4 SUMMARY OF QUANTITIES
- 5-6 SCHEDULE OF QUANTITIES
- 7-9 TYPICAL SECTIONS
- 10-31 PLAN VIEW /LINE DIAGRAM
- 32-34 ENTRANCE AND SIDEROAD DETAILS
- 35 BUTT JOINT DETAIL

**HIGHWAY CLASSIFICATION**

**F.A.P. ROUTE 566 (IL 106)**

**CLASSIFICATION: OTHER PRINCIPAL ARTERIAL**

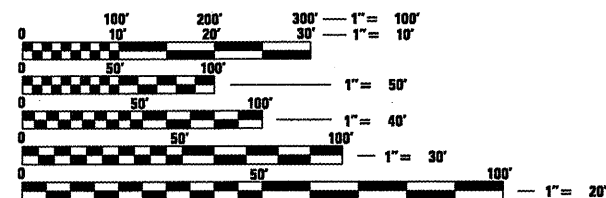
**ADT: 1,950 (2009)**

**PV = 83%**

**ADT: (2026)**

**SU = 10%**

**MU = 7%**

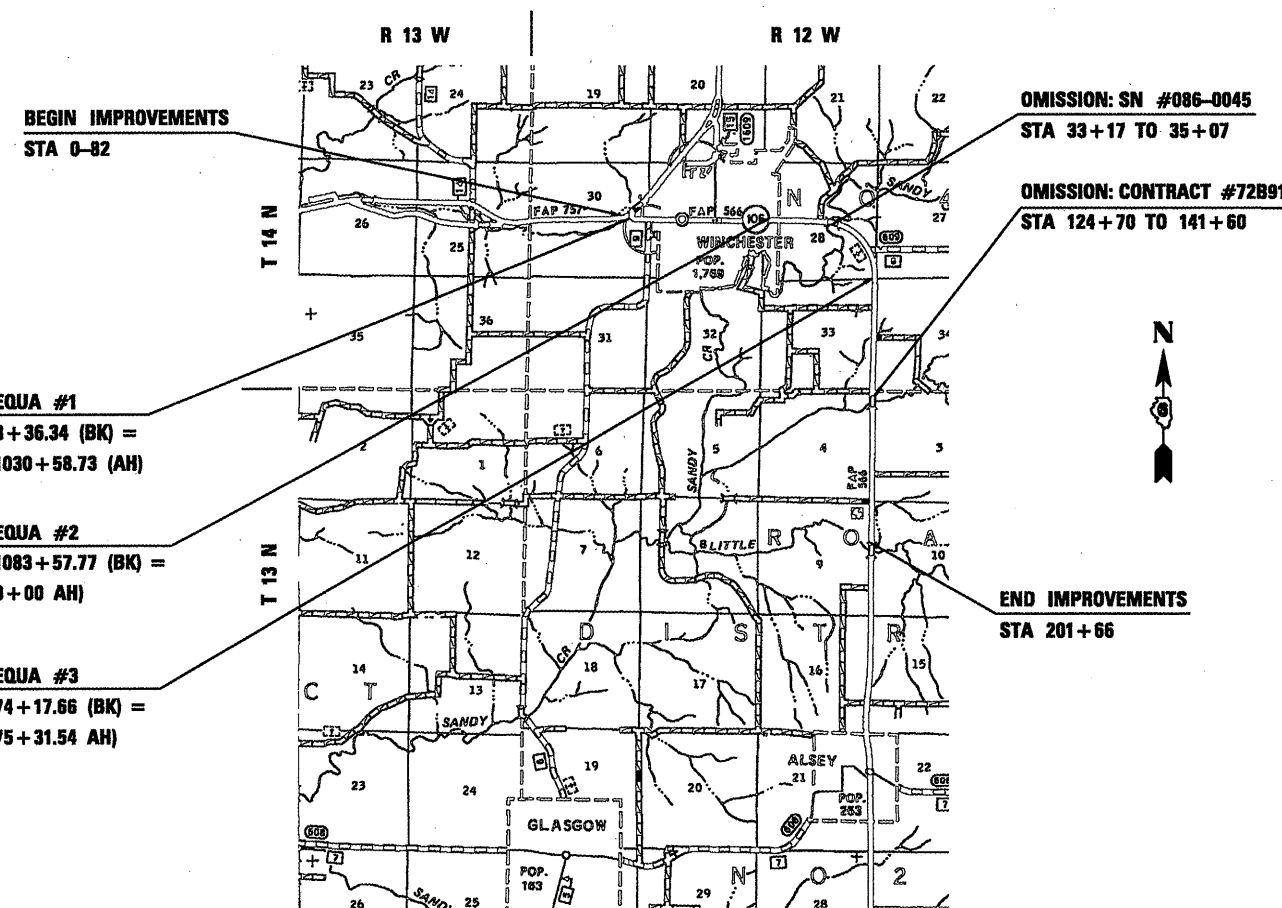


FULL SIZE PLANS HAVE BEEN PREPARED USING STANDARD ENGINEERING SCALES. REDUCED SIZED PLANS WILL NOT CONFORM TO STANDARD SCALES. IN MAKING MEASUREMENTS ON REDUCED PLANS, THE ABOVE SCALES MAY BE USED.

**J.U.L.I.E.**  
**JOINT UTILITY LOCATION INFORMATION FOR EXCAVATION**  
 1-800-892-0123  
 OR 811

**PROJECT ENGINEER JOHN NEGANGARD 217-782-6990**  
**PROJECT MANAGER VINCE MADONIA 217-785-9046**

**CONTRACT NO. 72C34**



**GROSS LENGTH = 28,750.83 FT. = 5.45 MILE**  
**NET LENGTH = 27,370.83 FT. = 5.18 MILE**

**STATE OF ILLINOIS**  
**DEPARTMENT OF TRANSPORTATION**  
**DIVISION OF HIGHWAYS**

SUBMITTED *Edna B. 20 10*  
*Robert D. Kirk*  
 DEPUTY DIRECTOR OF HIGHWAYS, REGION ENGINEER

*March 19, 20 10*  
*Scott E. Still, P.E.*  
 ENGINEER OF DESIGN AND ENVIRONMENT

*March 19, 20 10*  
*Christine M. Reed*  
 DIRECTOR OF HIGHWAYS/CHIEF ENGINEER

**PRINTED BY THE AUTHORITY  
OF THE STATE OF ILLINOIS**