

F.A.P. RTE.	SECTION	COUNTY	TOTAL SHEETS	SHEET NO.
614	147RS-6; 148RS-3	MORGAN	8	1
FED. ROAD DIST. NO. 6	ILLINOIS	CONTRACT NO. 72C53		

STATE OF ILLINOIS
DEPARTMENT OF TRANSPORTATION
DIVISION OF HIGHWAYS

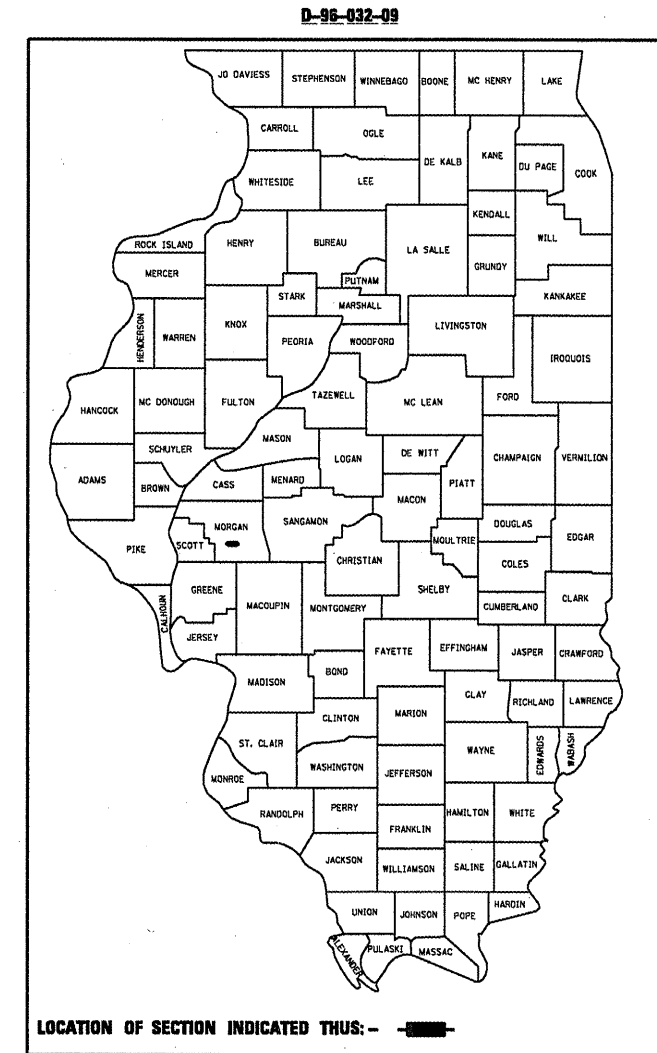
PROPOSED
HIGHWAY PLANS

FAP ROUTE 614 (IL 78)
SECTION 147RS-6; 148RS-3

RESURFACING
MORGAN COUNTY

C-96-032-09

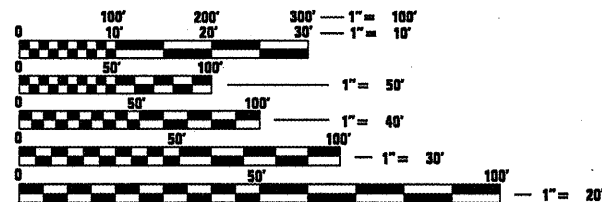
R 10 W



FOR INDEX OF SHEETS, SEE SHEET NO. 2

FOR LIST OF STANDARDS, SEE SHEET NO. 2

ADT 2,900
 MU 3%
 SU 11%
 PV 86%



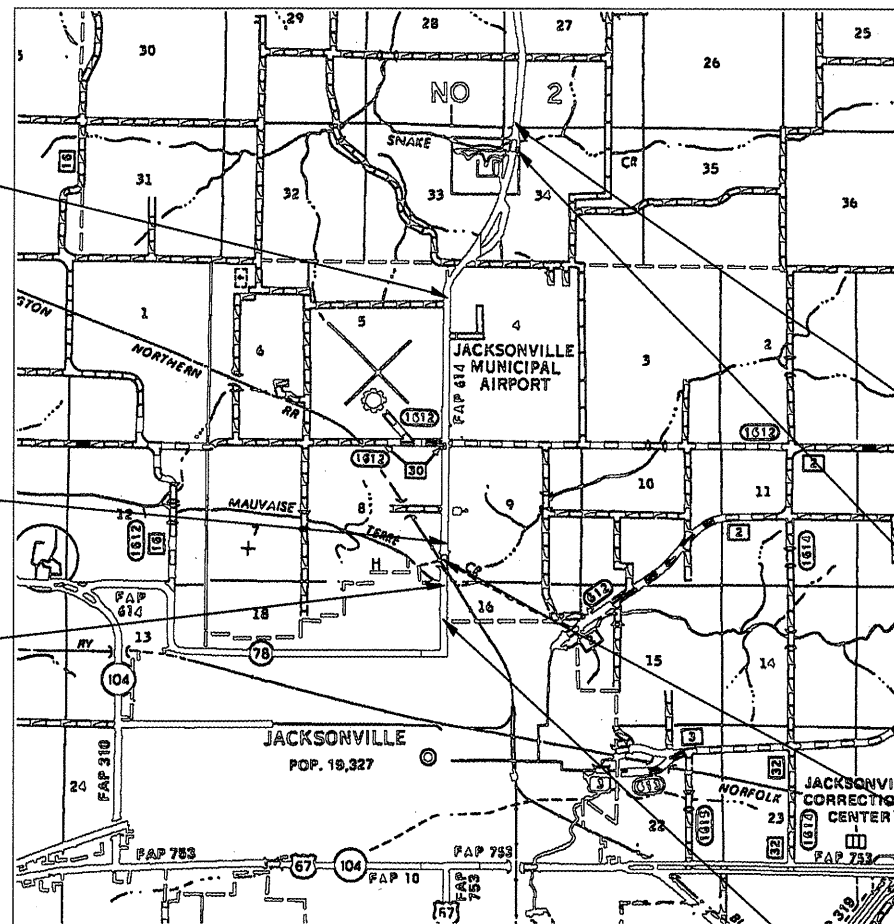
FULL SIZE PLANS HAVE BEEN PREPARED USING STANDARD ENGINEERING SCALES. REDUCED SIZED PLANS WILL NOT CONFORM TO STANDARD SCALES. IN MAKING MEASUREMENTS ON REDUCED PLANS, THE ABOVE SCALES MAY BE USED.

J.U.L.I.E.
 JOINT UTILITY LOCATION INFORMATION FOR EXCAVATION
 1-800-892-0123
 OR 811

STA EQUATION
STA 643+18.70 BK =
STA 645+11.04 AH

STA EQUATION
STA 737+68.43 BK =
STA 8+35.81 AH

STA EQUATION
STA 24+06.86 BK =
STA 753+39.94 AH



BEGIN PROJECT
SECTION 147RS-6; 148RS-3
STA 572+25

BRIDGE OMISSION
SN 069-0004
STA 575+03.21
STA 575+46.50

BRIDGE OMISSION
SN. 069-0005
STA 13+50.00 TO
STA 22+50.00

END PROJECT
SECTION 764+90.6

GROSS LENGTH = 19,073 FT. = 3.61 MILE
 NET LENGTH = 18,130 FT. = 3.43 MILE

PROJECT ENGINEER: JOHN NEGANGARD (217/782-6990)
PROJECT MANAGER: VINCE MADONIA (217/785-9046)

CONTRACT NO. 72C53

STATE OF ILLINOIS
 DEPARTMENT OF TRANSPORTATION
 DIVISION OF HIGHWAYS

SUBMITTED *January 15 2010*
Roger E. Dink
 DEPUTY DIRECTOR OF HIGHWAYS, REGION ENGINEER

March 19 2010
Scott E. Stitt, P.E. /bc
 SENIOR ENGINEER OF DESIGN AND ENVIRONMENT

March 19 2010
Christine M. Reed /bc
 DIRECTOR OF HIGHWAYS, CHIEF ENGINEER

PRINTED BY THE AUTHORITY
OF THE STATE OF ILLINOIS

GENERAL NOTES:

1. ANY REFERENCE TO THE STANDARDS THROUGHOUT THE PLANS SHALL BE INTERPRETED TO BE THE LATEST STANDARDS OF THE DEPARTMENT AS INCLUDED IN THE PLANS.
2. NO EXCAVATION ANTICIPATED ON THIS PROJECT WHICH WOULD AFFECT UTILITIES. SHOULD ANY EXCAVATION BE REQUIRED, J. U. L. I. E. SHALL BE NOTIFIED A MINIMUM OF 48 HOURS IN ADVANCE - (800) 892-0123.
3. EXISTING RAISED REFLECTIVE PAVEMENT MARKERS SHALL BE REMOVED PRIOR TO RESURFACING
4. ALL CONFLICTING EXISTING STRIPING WILL BE REMOVED.
5. ALL PAVEMENT MARKINGS SHALL BE VERIFIED BY RESIDENT/FIELD ENGINEER PRIOR TO THEIR PLACEMENT.
6. EXISTING PAVEMENT DAMAGED DUE TO THE CONTRACTOR'S OPERATIONS, NOT OTHERWISE NECESSARY TO REPLACE, SHALL BE REPLACED AT THE EXPENSE OF THE CONTRACTOR.

7. THE FOLLOWING APPLICATION RATES WERE USED FOR QUANTITY CALCULATIONS:

HOT-MIX ASPHALT SURFACE (112 LBS)	0.056 T/SY*IN
PRIME COAT (BIT)	0.00038T/SY(ON PAVEMENT)
PRIME COAT (AGG)	0.002T/SY

8. THE FIRST 10' OF EACH RESURFACING TERMINI IS ASSUMED TO BE PAID FOR AS "HOT MIX ASPHALT SURFACE REMOVAL - BUTT JOINT" COST TO INCLUDE SAWING AND REMOVING SMOOTH 1.5" VERTICAL SURFACE FOR RESURFACING TO TERMINATE
9. NO PASSING ZONES SHALL BE FIELD VERIFIED BY DISTRICT 6 BUREAU OF OPERATIONS (217) 785-0288 14 DAYS PRIOR TO FINAL PAVEMENT MARKING

THE FOLLOWING MIXTURE REQUIREMENTS ARE APPLICABLE TO THIS PROJECT:

MIXTURE USES:	HMA	PATCHING
	SURF. CSE.	
LOCATION	IL 78	IL 78
AC/PG:	PG 64-22	PG 64-22
DESIGN AIR VOIDS:	4% @ N = 50	4% @ N = 50
MIXTURE COMPOSITION: (GRADATION MIXTURE)	IL 9.5 OR IL 12.5	IL 19.0
FRICITION AGGREGATE:	MIX C	N/A

INDEX OF SHEETS:

1. COVER SHEET
2. GENERAL NOTES
3. SUMMARY OF QUANTITIES
4. SCHEDULE OF QUANTITIES
5. TYPICAL SECTIONS
- 6-8. LINE DIAGRAM

LIST OF STANDARDS:

- 442201-03
- 701001-02
- 701006-03
- 701011-02
- 701201-03
- 701301-03
- 701306-02
- 701311-03
- 701901-01
- 780001-02
- 781001-03

DISTRICT SIX	
EXAMINED <u>January 27</u>	<u>20 09</u>
<i>[Signature]</i>	
OPERATIONS ENGINEER	
EXAMINED <u>Jan 27</u>	<u>20 09</u>
<i>[Signature]</i>	
PROGRAM DEVELOPMENT ENGINEER	
EXAMINED <u>Feb 02</u>	<u>20 09</u>
<i>[Signature]</i>	
PROGRAM IMPLEMENTATION ENGINEER	

FILE NAME =	USER NAME = vereenda	DESIGNED -	REVISED -
c:\pwwork\pwwork\vereenda\0105080\067	2C53-shr-gennotedgn	DRAWN -	REVISED -
PLOT SCALE = 100.2828 "/ IN.	CHECKED -	REVISIONS -	REVISED -
PLOT DATE = Feb-03-2009 02:26:15PM	DATE -	REVISED -	REVISED -

**STATE OF ILLINOIS
DEPARTMENT OF TRANSPORTATION**

GENERAL NOTES	
SCALE:	SHEET NO. 2 OF 4 SHEETS
STA.	TO STA.

F.A.P. RTE.	SECTION	COUNTY	TOTAL SHEETS	SHEET NO.
614	147RS-6; 148RS-3	MORGAN	8	2
CONTRACT NO. 72C53				
FED. ROAD DIST. NO. 6 ILLINOIS FED. AID PROJECT				

				IL 78 100% STATE CONST. CODE 1000
Code No.	Item	Unit	Total	
40600200	BITUMINOUS MATERIALS (PRIME COAT)	TON	18	18
40600300	AGGREGATE (PRIME COAT)	TON	97	97
40600895	CONSTRUCTING TEST STRIP	EACH	1	1
40600982	HOT-MIX ASPHALT SURFACE REMOVAL - BUTT JOINT	SQ YD	108	108
40600990	TEMPORARY RAMP	SQ YD	54	54
40603310	HOT-MIX ASPHALT SURFACE COURSE, MIX "C", N50	TON	4,086	4,086
40800050	INCIDENTAL HOT-MIX ASPHALT SURFACING	TON	25	25
44000198	HOT-MIX ASPHALT SURFACE REMOVAL, VARIABLE DEPTH	SQ YD	48,834	48,834
44200168	PAVEMENT PATCHING, TYPE II, 14 INCH	SQ YD	300	300
44200172	PAVEMENT PATCHING, TYPE III, 14 INCH	SQ YD	150	150
44200174	PAVEMENT PATCHING, TYPE IV, 14 INCH	SQ YD	50	50
48101200	AGGREGATE SHOULDERS, TYPE B	TON	1,376	1,376
67100100	MOBILIZATION	L SUM	1	1
70100450	TRAFFIC CONTROL AND PROTECTION, STANDARD 701201	L SUM	1	1
70100460	TRAFFIC CONTROL AND PROTECTION, STANDARD 701306	L SUM	1	1
70300100	SHORT-TERM PAVEMENT MARKING	FOOT	3,626	3,626
70301000	WORK ZONE PAVEMENT MARKING REMOVAL	SQ FT	755	755
* 78001120	PAINT PAVEMENT MARKING - LINE 5"	FOOT	48,437	48,437
* 78100100	RAISED REFLECTIVE PAVEMENT MARKER	EACH	227	227
78300200	RAISED REFLECTIVE PAVEMENT MARKER REMOVAL	EACH	227	227
X0321374	GRADING AND SHAPING SHOULDERS	FOOT	36,259	36,259

* SPECIALTY ITEMS

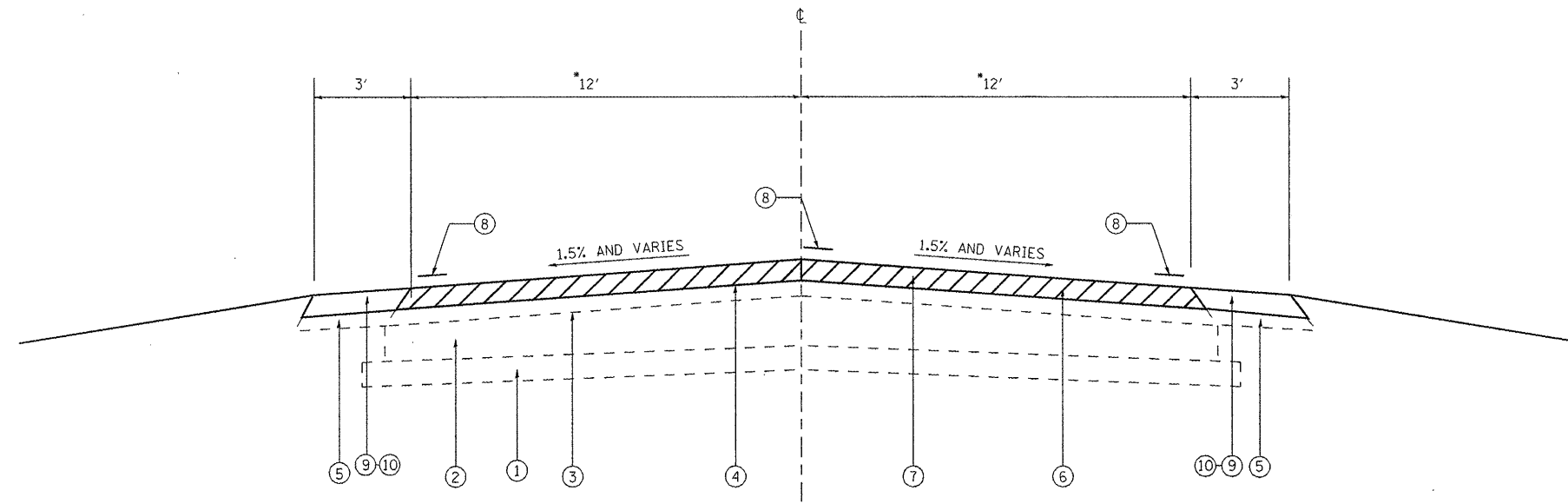
FILE NAME = c:\pwork\pwork\WIDOT\LAUGHLIN\dl0105000\0572C53-shr-500.dgn	USER NAME = laughlinr1	DESIGNED -	REVISED -	STATE OF ILLINOIS DEPARTMENT OF TRANSPORTATION	SUMMARY OF QUANTITIES				F.A. RTE. 614	SECTION 147RS-6; 148RS-3	COUNTY MORGAN	TOTAL SHEETS 8	SHEET NO. 3
	PLOT SCALE = 100.0000' / IN.	DRAWN -	REVISED -		SCALE:	SHEET NO.	OF	SHEETS	STA.	TO STA.	CONTRACT NO. 72C53		
	PLOT DATE = Jan-22-2010 09:21:08AM	CHECKED -	REVISED -		ILLINOIS FED. AID PROJECT								
		DATE -	REVISED -										

Sta to Sta	Length	Pav. W	Pav. Area	Bit Mat Prime Coat	Bit Mat Agg	Resurf T	HMA Surface	Butt Joint	HMA Surf Rem	Agg Shoulder	Grade & Shape Shld	Short Term Pavt mkg	Work Zone Mkg Rem	Paint Pav't Mkg	RRPM Removal	RRPM	Temp Ramps	Incidental HMA resurf	
	(ft)	(ft)	(SY)	(T)	(T)	(in)	(T)	(SY)	(SY)	(Ton)	(ft)	(ft)	(sq ft)	(ft)	(ea)	(ea)	(SY)	(T)	
572+25	575+03	278.21	24	742	0.3	1.5	1.5	62	26.7	715	21	556	56	11.6	626	3	3	13.3	--
575+03	575+47	43.29	Omission SN 069-0004		--	--	--	--	--	--	--	--	--	--	--	--	--	--	--
575+47	643+19	6,772.20	24	18,059	6.9	36.1	1.5	1,517	--	18,059	514	13,544	1,354	282.2	15,237	85	85	--	--
645+11	725+00	7,988.96	24	21,304	8.1	42.6	1.5	1,790	--	21,304	607	15,978	1,598	332.9	17,975	100	100	--	--
725+00	737+68	1,268.43	25.5	3,594	1.4	7.2	1.5	302	--	3,594	96	2,537	254	52.9	2,854	16	16	--	--
8+36	13+50	514.19	25.5	1,457	0.6	2.9	1.5	122	28.3	1,429	39	1,028	103	21.4	1,157	6	6	14.2	--
13+50	22+50	900.00	Omission SN 069-0005		--	--	--	--	--	--	--	--	--	--	--	--	--	--	--
22+50	24+07	156.86	24	418	0.2	0.8	1.5	35	26.7	392	12	314	31	6.5	353	2	2	13.3	--
753+40	764+91	1,150.66	24	3,068	1.2	6.1	1.5	258	26.7	3,042	87	2,301	230	47.9	2,589	14	14	13.3	--
No passing zones - 1 way		3,490.00	--	--	--	--	--	--	--	--	--	--	--	--	3,490	--	--	--	--
No passing zones - 2 way		2,375.00	--	--	--	--	--	--	--	--	--	--	--	--	4,156	--	--	--	--
North Elementary School			3 Entrances	300	--	--	1.5	--	--	300	--	--	--	--	--	--	--	--	25.0
Totals		19,072.80			18	97		4,086	108	48,834	1,376	36,259	3,626	755	48,437	227	227	54	25

Gross Length 3.61 mi
 Net Length 3.43 mi

Type	(SY)
TY II	300
TY III	150
TY IV	50

72C53



LEGEND

- ① EX SUB-BASE GRANULAR MATERIAL, 4"
- ② EX P.C.C. BASE COURSE, 9"
- ③ EX HOT-MIX ASPHALT SURFACE (3" & VAR)
- ④ EX HOT-MIX ASPHALT SURFACE, 1 1/2"
- ⑤ EX AGG. SHOULDER TYPE B
- ⑥ PR HOT-MIX ASPHALT SURFACE REMOVAL, 1 1/2"
- ⑦ PR HOT-MIX ASPHALT SURFACE COURSE, MIX "C", N50 (1 1/2")
- ⑧ PR PAINT PAVEMENT MARKING, LINE 5"
- ⑨ PR AGGREGATE SHOULDERS, TY B (THICKNESS VARIES, 2" TYP)
- ⑩ PR GRADING AND SHAPING SHOULDERS

STA 572+25 TO STA 575+03.21
 STA 575+46.50 TO STA 643+18.70
 STA 645+11.04 AH TO STA 737+68.43 BK
 STA 8+35.81 AH TO STA 13.50
 STA 22+50 TO STA 24+06.86 BK
 STA 753+39.94 AH TO STA 764+90.6
 * STA 725+00 TO 13+50, 13'

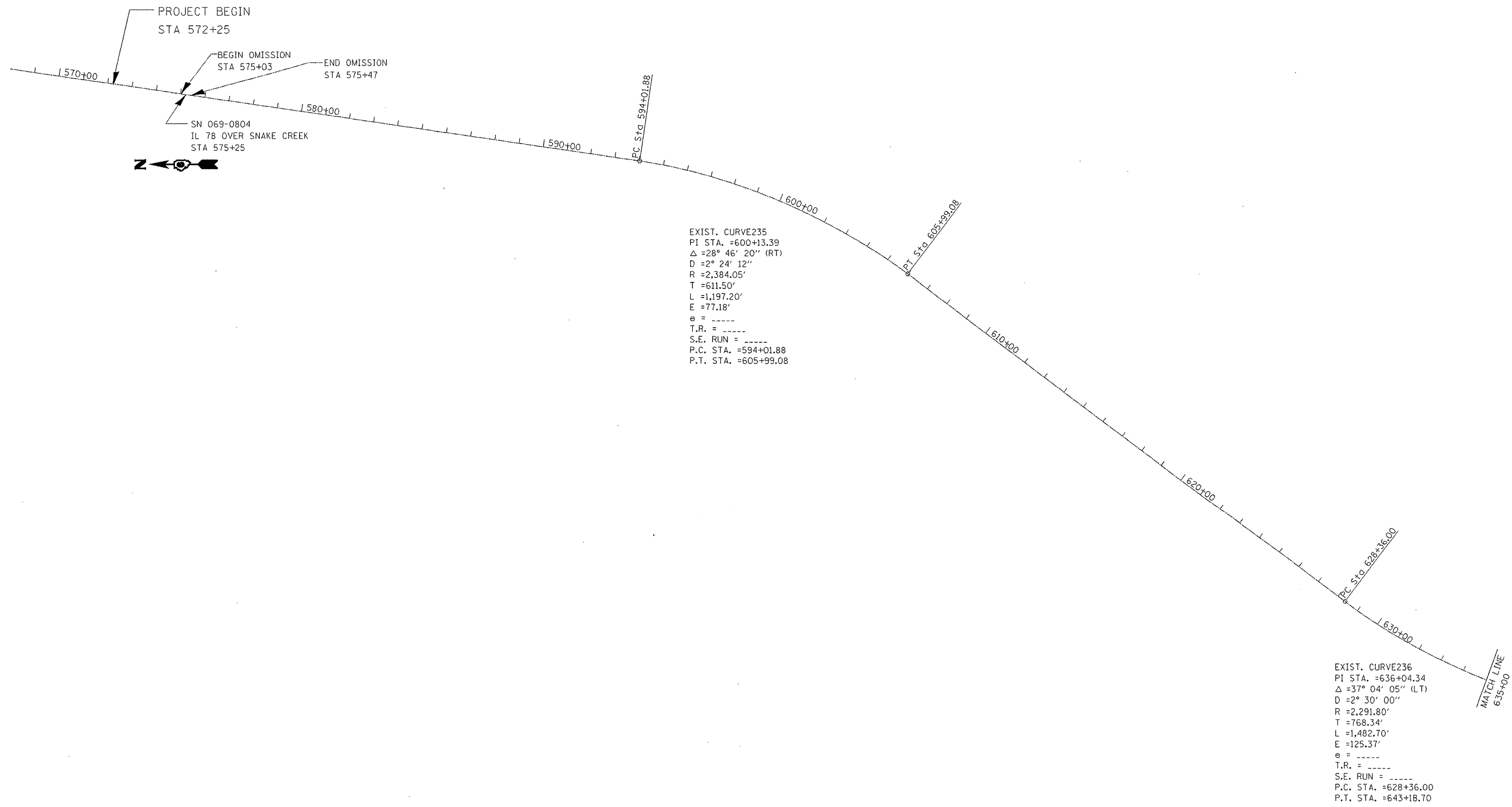
BRIDGE OMISSION
 STA 575+03.21 TO STA 575+46.50
 STA 13+50 TO STA 22+50 - SN 069-0005

FILE NAME =	USER NAME = leughlinr1	DESIGNED -	REVISED -
ct:\pw\work\PMIDOT\LAUGHLINR\00105080\72C53-shr-typicals.dgn		DRAWN -	REVISED -
PLOT SCALE = 100.0000 ' / IN.		CHECKED -	REVISED -
PLOT DATE = Jan-22-2010 09:21:20AM		DATE -	REVISED -

**STATE OF ILLINOIS
 DEPARTMENT OF TRANSPORTATION**

TYPICAL SECTION			
SCALE:	SHEET NO.	OF SHEETS	STA. TO STA.

F.A.P. RTE.	SECTION	COUNTY	TOTAL SHEETS	SHEET NO.
614	147RS-6; 148RS-3	MORGAN	8	5
CONTRACT NO. 72C53				
ILLINOIS FED. AID PROJECT				



FILE NAME =	USER NAME = leughlinr1	DESIGNED -	REVISED -
c:\pwwork\pwwid001\LAUGHLINRL\d0105080	72C53-sh1-1\mediagram.dgn	DRAWN -	REVISED -
PLOT SCALE = 400,0000' / IN.	CHECKED -	REVISED -	REVISED -
PLOT DATE = Jan-22-2010 09:21:22AM	DATE -	REVISED -	REVISED -

**STATE OF ILLINOIS
DEPARTMENT OF TRANSPORTATION**

LINE DIAGRAM			
SCALE: 1" = 500'	SHEET NO.	OF SHEETS	STA. 568+00 TO STA. 635+00

F.A. RTE.	SECTION	COUNTY	TOTAL SHEETS	SHEET NO.
614	14RS-6; 14B RS-3	MORGAN	8	6
CONTRACT NO. 72C53				
ILLINOIS FED. AID PROJECT				

MATCH LINE
635+00

EXIST. CURVE 236
 PI STA. = 636+04.34
 $\Delta = 37^\circ 04' 05''$ (LT)
 $D = 2^\circ 30' 00''$
 $R = 2,291.80'$
 $T = 768.34'$
 $L = 1,482.70'$
 $E = 125.37'$
 $e = \text{-----}$
 $T.R. = \text{-----}$
 $S.E. RUN = \text{-----}$
 $P.C. STA. = 628+36.00$
 $P.T. STA. = 643+18.70$

POT. Sta. 643+18.70 BK=
 POT. Sta. 645+11.04 AH



POT. Sta. 672+17.41

MATCH LINE
690+00

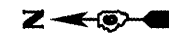
MATCH LINE
690+00

EXIST. CURVE 241
 PI STA. = 12+10.83
 $\Delta = 1^\circ 08' 45''$ (RT)
 $D = 0^\circ 27' 30''$
 $R = 12,501.90'$
 $T = 125.01'$
 $L = 250.02'$
 $E = 0.63'$
 $e = \text{-----}$
 $T.R. = \text{-----}$
 $S.E. RUN = \text{-----}$
 $P.C. STA. = 10+85.82$
 $P.T. STA. = 13+35.84$

POT. Sta. 698+64.03

POT. Sta. 717+65.00

POT. Sta. 721+72.00



POT. Sta. 737+68.43 BK=
 PC STA. 8+35.81 AH

POT. Sta. 10+85.82

POT. Sta. 13+35.84

MATCH LINE
15+00

EXIST. CURVE 242
 PI STA. = 9+60.82
 $\Delta = 1^\circ 06' 38''$ (LT)
 $D = 0^\circ 26' 39''$
 $R = 12,899.31'$
 $T = 125.01'$
 $L = 250.00'$
 $E = 0.61'$
 $e = \text{-----}$
 $T.R. = \text{-----}$
 $S.E. RUN = \text{-----}$
 $P.C. STA. = 8+35.81$
 $P.T. STA. = 10+85.82$

BEGIN OMISSION
 STA 13+50

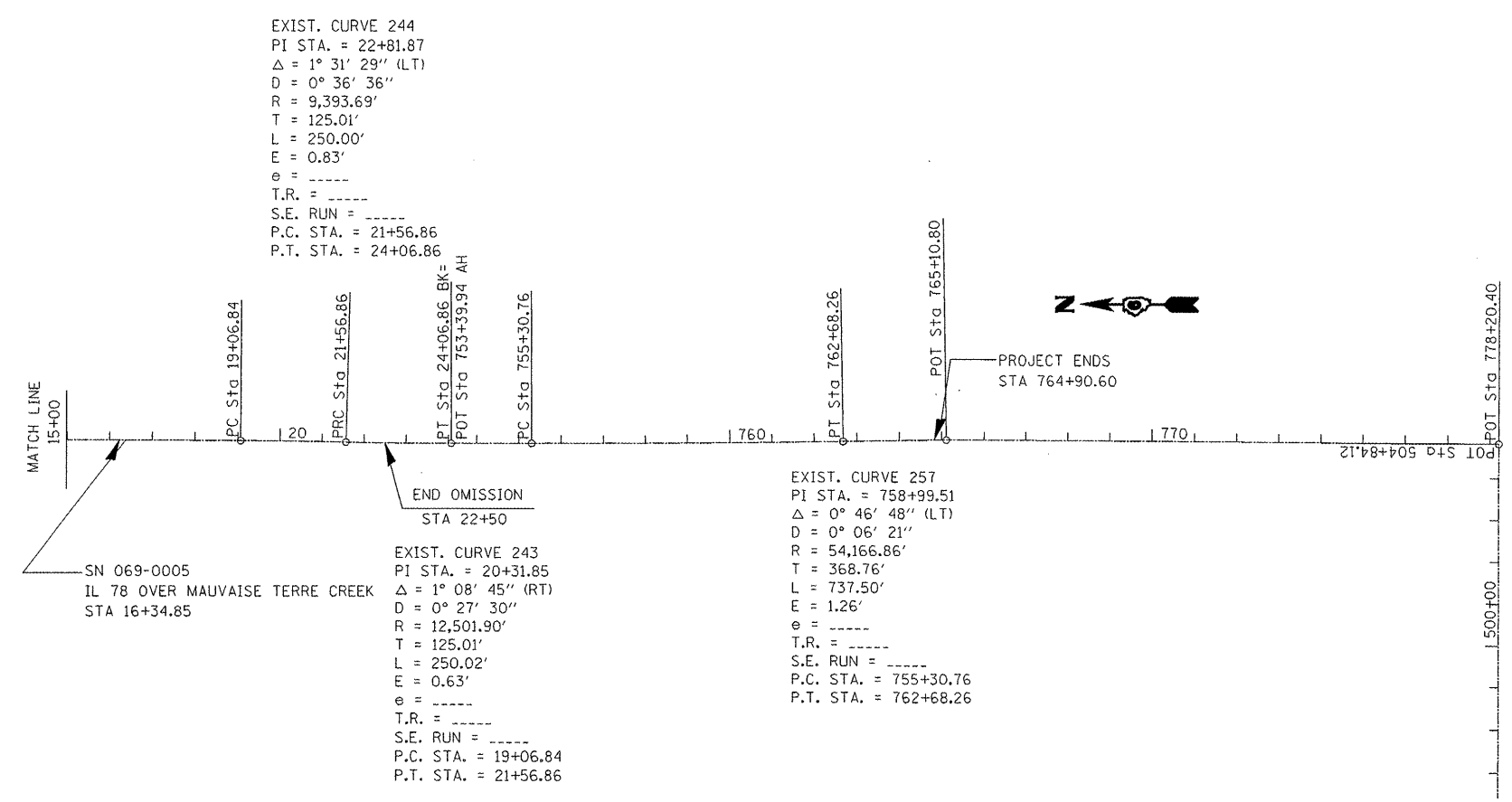
FILE NAME = c:\pwwork\pwwid\DOT\LAUGHLIN\RL\d0105080\72C53-sh1-linediagram.dgn	USER NAME = laughlinr1	DESIGNED -	REVISED -
PLOT SCALE = 400,0000 / IN.		DRAWN -	REVISED -
PLOT DATE = Jan-22-2010 09:21:24AM		CHECKED -	REVISED -
		DATE -	REVISED -

STATE OF ILLINOIS
 DEPARTMENT OF TRANSPORTATION

LINE DIAGRAM

SCALE: 1" = 500' SHEET NO. OF SHEETS STA. 636+00 TO STA. 15+00

F.A. RTE.	SECTION	COUNTY	TOTAL SHEETS	SHEET NO.
614	147 RS-6; 148RS-3	MORGAN	8	7
CONTRACT NO.				
ILLINOIS FED. AID PROJECT				



FILE NAME =	USER NAME = laughlinr1	DESIGNED -	REVISED -	STATE OF ILLINOIS DEPARTMENT OF TRANSPORTATION	LINE DIAGRAM			F.A. RTE.	SECTION	COUNTY	TOTAL SHEETS	SHEET NO.
c:\pwork\pwork\DOT\LAUGHLINRL\0105080\0572C53-shr-1\mediagr.am.dgn		DRAWN -	REVISED -		614	147RS-6; 148RS-3	MORGAN	8	8			
PLOT SCALE = 400,0000' / IN.		CHECKED -	REVISED -		SCALE: 1" = 500'			SHEET NO. OF SHEETS STA. 15+00 TO STA. 778+20.40			CONTRACT NO. 72C53	
PLOT DATE = Jan-22-2010 09:21:26AM		DATE -	REVISED -		ILLINOIS FED. AID PROJECT							