

STATE OF ILLINOIS  
DEPARTMENT OF TRANSPORTATION  
DIVISION OF HIGHWAYS

**PROPOSED  
HIGHWAY PLANS**

FAP ROUTE 658 (IL 29)  
SECTION D6 RUMBLE STRIP, MRKING 2010

PROJ. ACH5IP-0658(023)  
SANGAMON COUNTY

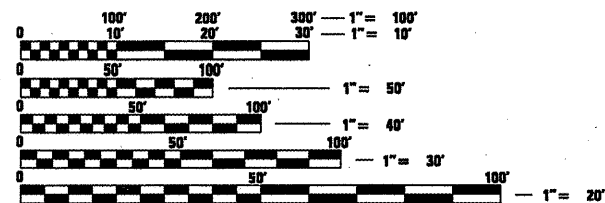
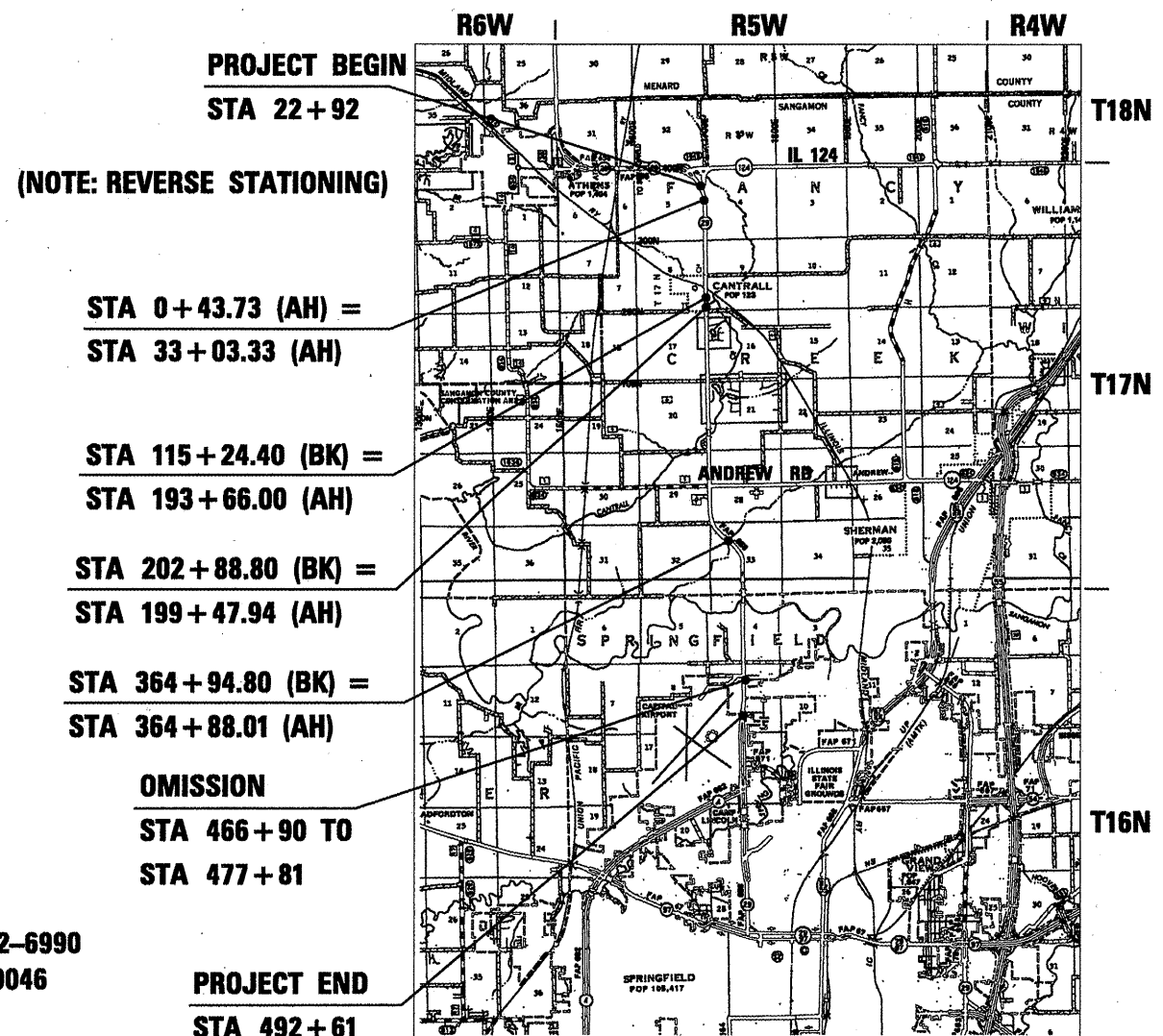
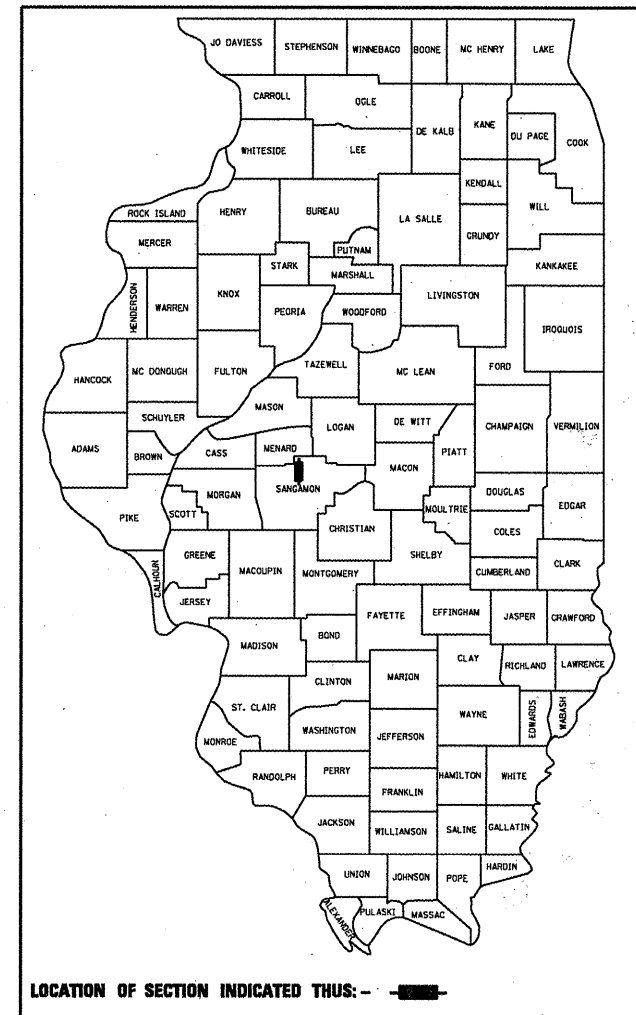
C-96-123-10

FOR INDEX OF SHEETS, SEE SHEET NO. 02

F.A.P. RTE.	SECTION	COUNTY	TOTAL SHEETS	SHEET NO.
658		ILLINOIS	16	1
			CONTRACT NO. 72D19	

D6 RUMBLESTRIP, MRKING 2010  
SANGAMON

D-96-123-10



FULL SIZE PLANS HAVE BEEN PREPARED USING STANDARD ENGINEERING SCALES. REDUCED SIZED PLANS WILL NOT CONFORM TO STANDARD SCALES. IN MAKING MEASUREMENTS ON REDUCED PLANS, THE ABOVE SCALES MAY BE USED.

J.U.L.I.E.  
JOINT UTILITY LOCATION INFORMATION FOR EXCAVATION  
1-800-892-0123  
OR 811

PROJECT ENGINEER JOHN NEGANGARD 217-782-6990  
PROJECT MANAGER VINCE MADONIA 217-785-9046

CONTRACT NO. 72D19

GROSS LENGTH = 40,712 FT. = 7.71 MILE  
NET LENGTH = 39,621 FT. = 7.50 MILE

STATE OF ILLINOIS  
DEPARTMENT OF TRANSPORTATION  
DIVISION OF HIGHWAYS

SUBMITTED *Sept 31, 2009*  
*Ronald D. Orloff*  
DEPUTY DIRECTOR OF HIGHWAYS, REGION ENGINEER

*October 2, 2009*  
*Charles J. Ingersoll*  
ENGINEER OF DESIGN AND ENVIRONMENT

*October 2, 2009*  
*Christine M. Reed*  
DIRECTOR OF HIGHWAYS, CHIEF ENGINEER

**PRINTED BY THE AUTHORITY  
OF THE STATE OF ILLINOIS**

**GENERAL NOTES AND COMMENTS**

1. ALL ENTRANCES CURRENTLY IN USE SHALL REMAIN ACCESSIBLE BOTH DURING AND AFTER CONSTRUCTION.
2. NO LANE CLOSURES WILL BE ALLOWED WITHOUT FLAGGER PROTECTION AND NO WORK OR LANE CLOSURES PRIOR TO 9:00 AM OR AFTER 3:30 PM
3. FIELD/RESIDENT ENGINEER SHALL COORDINATE WITH OPERATION TO VERIFY NO PASSING ZONES, BUT SHALL CONTACT STUDIES & PLANS CONCERNING COMMITMENTS AND REASONS FOR PROPOSED CHANGES IN NO PASSING ZONES FROM PREVIOUS PAVEMENT MARKINGS.
4. THERE SHALL BE NO LANE CLOSURES WITHIN THE LIMITS OF THIS PROJECT DURING THE ILLINOIS STATE FAIR.

**COMMITMENTS**

THE FIELD/RESIDENT ENGINEER SHALL CONTACT STUDIES AND PLANS CONCERNING ANY MAJOR PLAN CHANGES TO MAKE SURE NO PREVIOUS COMMITMENTS (NOT LISTED) WERE MADE AFFECTING THE DESIGN, AND ALLOW AN IMPROVED DESIGN FOR FUTURE PROJECTS.

EXPERIMENTAL FEATURES - CENTERLINE RUMBLE STRIPS & SHOULDER RUMBLE STRIPS ON TWO-LANE RURAL HIGHWAY.

PROPOSED SCOPE OF WORK - REP. POE.

**INDEX OF SHEETS**

- |       |                              |
|-------|------------------------------|
| 1     | COVER SHEET                  |
| 2     | GENERAL NOTES                |
| 3     | SUMMARY OF QUANTITIES        |
| 4-5   | SCHEDULES                    |
| 6-13  | LINE DIAGRAM                 |
| 14-15 | INTERSECTION MARKING DETAILS |
| 16    | RUMBLE STRIP DETAILS         |

**LIST OF STANDARDS**

- 701001-02
- 701006-03
- 701011-02
- 701301-03
- 701306-02
- 701311-03
- 701901-01
- 780001-02
- 781001-03

<b>DISTRICT SIX</b>	
EXAMINED <u>Aug 28</u> 20 <u>09</u>	<i>[Signature]</i>
OPERATIONS ENGINEER	
EXAMINED <u>Aug 27</u> 20 <u>09</u>	<i>[Signature]</i>
PROGRAM IMPLEMENTATION ENGINEER	
EXAMINED <u>August 27</u> 20 <u>09</u>	<i>[Signature]</i>
PROGRAM DEVELOPMENT ENGINEER	

FILE NAME =	USER NAME = bslj	DESIGNED -	REVISED -
ct:\pwork\VPWIDOT\BAIJ\0157369\0672019	shf*gennote.dgn	DRAWN -	REVISED -
	PLOT SCALE = 100.0000' / IN.	CHECKED -	REVISED -
	PLOT DATE = Aug-28-2009 09:40:05AM	DATE -	REVISED -

**STATE OF ILLINOIS  
DEPARTMENT OF TRANSPORTATION**

**GENERAL NOTES**

SCALE: SHEET NO. OF SHEETS STA. TO STA.

• D6 RUMBLESTRIP, MRKING 2010

F.A.U. RTE.	SECTION	COUNTY	TOTAL SHEETS	SHEET NO.
658		SANGAMON	16	2
CONTRACT NO. 72019				
[ILLINOIS] FED. AID PROJECT				

90% FED,  
10% STATE

SANGAMON  
COUNTY

PAY CODE	DESCRIPTION	UNIT	TOTAL	SFTY-1D
X0326898	CENTER LINE - RUMBLE STRIP - 16"	FOOT	35,243	35,243
78001120	PAINT PAVEMENT MARKING - LINE 5"	FOOT	114,600	114,600
<del>20100210</del>	<del>TREE REMOVAL (OVER 15 UNITS DIAMETER)</del>	<del>UNIT</del>	<del>23</del>	<del>23</del>
67100100	MOBILIZATION	L SUM	1	1
70100460	TRAFFIC CONTROL AND PROTECTION, STANDARD 701306	L SUM	1	1
* 72400100	REMOVE SIGN PANEL ASSEMBLY - TYPE A	EACH	5	5
* 72400500	RELOCATE SIGN PANEL ASSEMBLY - TYPE A	EACH	1	1
78000300	THERMOPLASTIC PAVEMENT MARKING - LINE 5"	FOOT	7,529	7,529
78000400	THERMOPLASTIC PAVEMENT MARKING - LINE 6"	FOOT	224	224
78000500	THERMOPLASTIC PAVEMENT MARKING - LINE 8"	FOOT	138	138
78000600	THERMOPLASTIC PAVEMENT MARKING - LINE 12"	FOOT	290	290
78003100	PREFORMED PLASTIC PAVEMENT MARKING, TYPE B - LETTERS AND SYMBOLS	SQ FT	62.4	62.4
78003180	PREFORMED PLASTIC PAVEMENT MARKING, TYPE B - LINE 24"	FOOT	128	128
78300100	PAVEMENT MARKING REMOVAL	SQ FT	3,950	3,950

\* Specialty Hems

Rev.  
SECTION D6 RUMBLESTRIPS, MRKING 2010

FILE NAME =	USER NAME = laughlinr1	DESIGNED -	REVISED -
c:\pwork\PWIDOT\LAUGHLINRL\d0157369\	72019-sh1-a0q.dgn	DRAWN -	REVISED -
PLOT SCALE = 100.0000' / IN.	CHECKED -	REVISED -	REVISED -
PLOT DATE = Aug-28-2009 02:43:48PM	DATE -	REVISED -	REVISED -

STATE OF ILLINOIS  
DEPARTMENT OF TRANSPORTATION

SUMMARY OF QUANTITIES				
SCALE:	SHEET NO.	OF	SHEETS	STA. TO STA.

F.A.P. RTE.	SECTION	COUNTY	TOTAL SHEETS	SHEET NO.
658		SANGAMON	16	3
CONTRACT NO. 72D19				
ILLINOIS FED. AID PROJECT				

Urethane Pavement Marking - Line 5"

Location	Sta.	Sta.	Pass (ft)	DBL NP (ft)	NBNP (ft)	SBNP (ft)
	492+61	487+06				555
	487+06	477+81		925		
Omission	477+81	466+90				Buckhorn / Estill turn lanes - Omission
	466+90	459+39		751		
	461+07	444+89			1618	
	444+89	443+32		157		
	443+32	433+55				977
	433+55	364+88	6867			
Sta Eq (Ah)	364+88					
Sta Eq (Bk)	364+95					
	364+95	363+31	164			
	363+31	355+18			813	
	355+18	344+59		1059		
	344+59	333+82				1077
	333+82	328+82		500		
Andrew Rd - Thermo	328+82	315+30				Thermo - see schedule
	315+30	310+30				500
	310+30	296+49	1381			
	296+49	286+04		1045		
	286+04	280+20				584
	280+20	265+96	1424			
	265+96	258+68			728	
	258+68	241+19		1749		
	241+19	233+04	815			
	233+04	222+96			1008	
	222+96	199+48		2348		
Sta. Eq (AH)	199+48					
Sta. Eq (BK)	202+89					
	202+89	193+66		923		
Sta. Eq (AH)	193+66					
Sta. Eq (BK)	115+24					
	115+24	80+00		3524		
	80+00	33+03	4697			
Sta Reverses	33+03					
Sta Reverses	+44					
	+44	17+92	1748			
	17+92	22+92			500	

	17096	12981	4667	3693
Note: Add extra 2x quantity for edge lines	x2.25	x4	x3.25	x3.25
	38466	51924	15168	12002

Total = 117,560  
 -2960  
**Final = 114,600**

Note: No EOP markings between 492+61 to 477+81 (deduct 2960')

White = 73,914  
 Yellow = 40,686

Center Line Rumble Strips

Location	Sta	to	Sta	Passing Zone (ft)	No Pass Zones (ft)
	492+61		477+81		1480
Buckhorn/Estill Omission	477+81		466+90		
	466+90		433+55		3335
	433+55		364+88	6867	
Sta Eq (Ah)	364+88				
Sta Eq (Bk)	364+95				
	364+95		363+31	164	
	363+31		328+82		3449
Andrew Rd Omission	328+82		315+30		
	315+30		310+30		500
	310+30		296+49	1381	
	296+49		280+20		1629
	280+20		265+96	1424	
	265+96		241+19		2477
	241+19		233+04	815	
	233+04		199+48		3356
Sta Eq (Ah)	199+48				
Sta Eq (Bk)	202+89				
	202+89		193+66		923
Sta Eq (Ah)	193+66				
Sta Eq (Bk)	115+24				
	115+24		108+18		706
Control Omission	108+18		77+92		
	77+92		33+03	4489	
Sta Reverses	33+03				
Sta Reverses	+44				
	+44		17+92	1748	
	17+92		22+92		500
				16,888	18355
				Total : 35,243	

\* D6 RUMBLESTRIP, MRKING 2010

Thermoplastic and Preformed Plastic Pavement Marking

Sta	to	Sta	Thermoplastic				Preformed			
			5" White (ft)	5" Yellow (ft)	6" White (ft)	8" White (ft)	12" White (ft)	12" Yellow (ft)	Letter & Symbols (sq ft)	24" White (ft)
<b>IL 29</b>										
328+82		315+30	2414	4494	224			230	62.4	83
<b>Andrew Rd</b>										
100' East		100' West	427	194		138	60			45
			2841	4688	224	138	60	230	62.4	128

Pavement Marking Removal

Location	(sq ft)	(sq ft)	(sq ft)	(sq ft)	(sq ft)	(sq ft)	(sq ft)	(sq ft)
IL 29 and Andrew Rd	2841	4688	224	138	60	230		128
	x5/12	x5/12	x6/12	x8/12	x12/12	x12/12		x2
	1184	1953	112	92	60	230	62.4	256

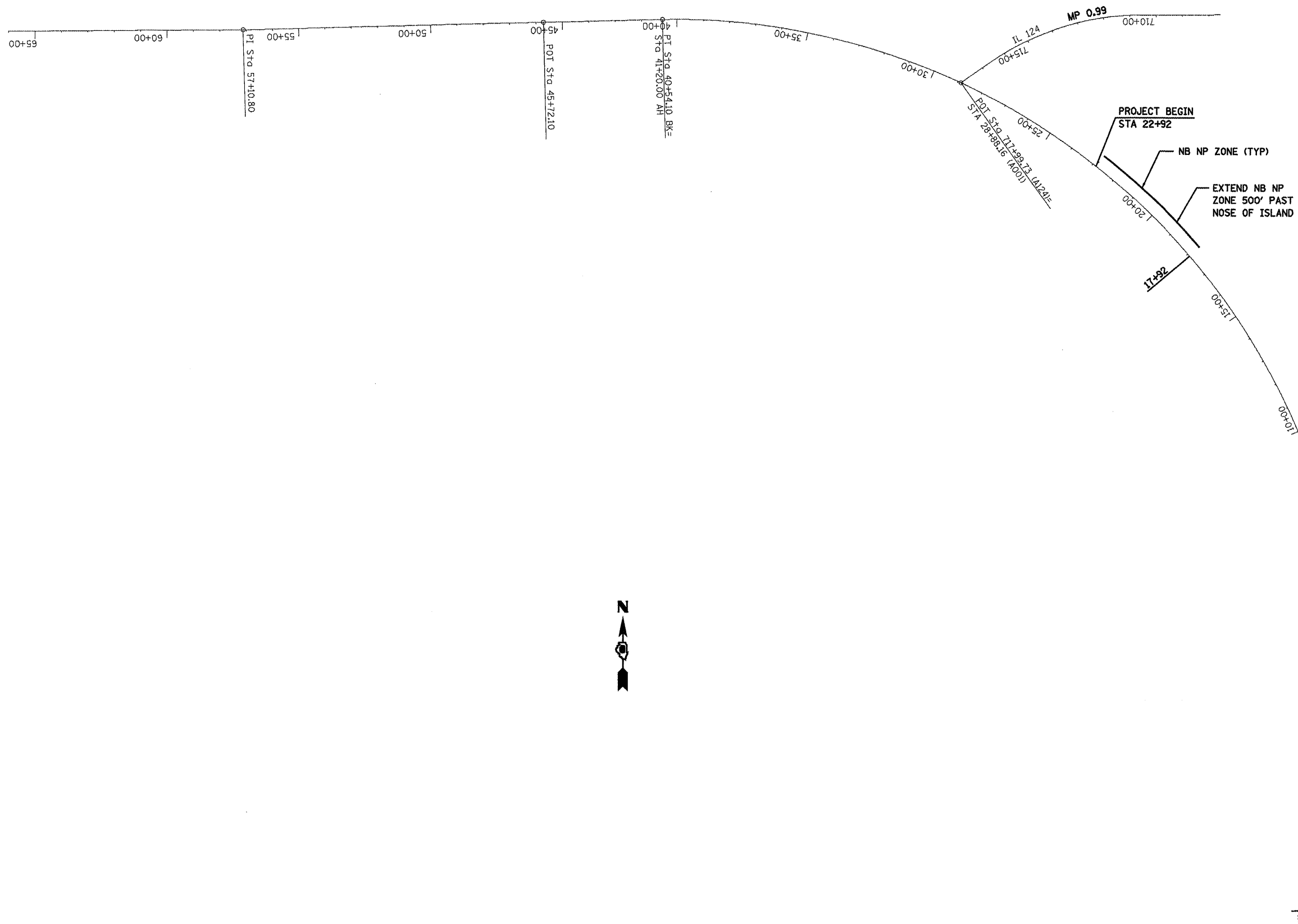
Total = 3950 sq ft

Remove Sign Panel Assy A, Relocate Sign Panel Assy A

Location	Quantity (EA)	Location	Quantity (EA)
Remove		Relocate	
108+18 - SBL	1		
203+87 - NBL	1		
207+33 - SBL	1		
295+00 - NBL	1	296+49 - NBL	1
336+19 - SBL	1		
<b>5 total</b>		<b>1 total</b>	

• D6 RUMBLESTRIP, MRKING 2010

FILE NAME =	USER NAME = laughlinr1	DESIGNED -	REVISED -	<b>STATE OF ILLINOIS DEPARTMENT OF TRANSPORTATION</b>	<b>SCHEDULES</b>				F.A.U. RTE.	SECTION	COUNTY	TOTAL SHEETS	SHEET NO.	
er\pwork\PWIDOT\LAUGHLINRL\40157369\072019-shtr-schedule.dgn		DRAWN -	REVISED -		SCALE:	SHEET NO.	OF	SHEETS	STA.	TO STA.	658		16	5
PLOT SCALE = 100,0000' / IN.		CHECKED -	REVISED -		CONTRACT NO. T2D19									
PLOT DATE = Aug-28-2009 02:47:31PM		DATE -	REVISED -		ILLINOIS FED. AID PROJECT									



EXIST. CURVE 200  
 PI STA. = 26+00.37  
 $\Delta = 90^\circ 13' 10''$  (L.T)  
 $D = 2^\circ 14' 59''$   
 $R = 2,546.87'$   
 $T = 2,556.64'$   
 $L = 4,010.37'$   
 $E = 1,061.87'$   
 $e = \text{---}$   
 T.R. =  $\text{---}$   
 S.E. RUN =  $\text{---}$   
 P.C. STA. = 0+43.73  
 P.T. STA. = 40+54.10



FILE NAME =  
 c:\pwork\PWIDOT\LAUHLIN\LD0157369\

USER NAME = laughlin  
 72D19-shr-1inediagram.dgn  
 PLOT SCALE = 400.0000' / IN.  
 PLOT DATE = Aug-29-2009 02:47:33PM

DESIGNED -	REVISED -
DRAWN -	REVISED -
CHECKED -	REVISED -
DATE -	REVISED -

**STATE OF ILLINOIS  
 DEPARTMENT OF TRANSPORTATION**

LINE DIAGRAM			
SCALE:	SHEET NO.	OF SHEETS	STA. TO STA.

F.A.P. RTE.	SECTION	COUNTY	TOTAL SHEETS	SHEET NO.
658	*	SANGAMON	16	6
CONTRACT NO. 72D19				
ILLINOIS FED. AID PROJECT				

• D6 RUMBLESTRIP, MRKING 2010



MATCHLINE STA. 42+00

45+00 50+00 55+00 60+00 65+00 70+00 75+00

PL Sta 74+65.40  
P Sta 86+64.80

80+00 85+00 90+00 95+00 100+00 105+00  
91+81 97+60 101+25

CLAYPOOL / BARBER RD.  
STA 87+92.37 MP 2.58

HOLLAND ST.  
STA 92+34.41 MP 2.26

IL MIDLAND RR  
STA 97+60.00 (approx) MP 2.76

CANTERBERRY ST.  
STA 97+83.61 MP 2.77

CANTRAL ST.  
STA 101+24.53 MP 2.83

EXTEND NB & SB NP ZONE TO STA 80+00

SB NP ZONE (TYP)

NB NP ZONE (TYP)

NOTE: NO CENTERLINE RUBLE STRIPS FROM STA 77+92 TO STA 108+18

MATCHLINE STA. 103+00

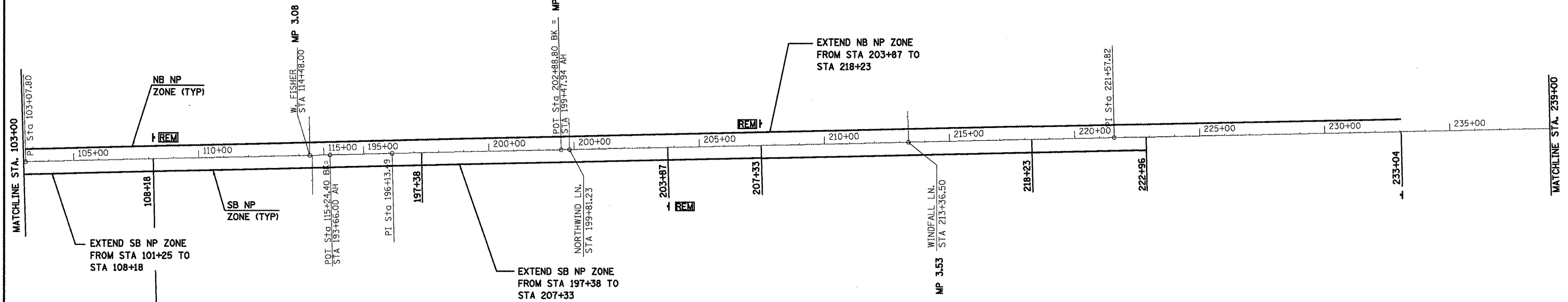
FILE NAME =	USER NAME = [eughlin]	DESIGNED -	REVISED -
...	...	DRAWN -	REVISED -
...	...	CHECKED -	REVISED -
...	...	DATE -	REVISED -

**STATE OF ILLINOIS  
DEPARTMENT OF TRANSPORTATION**

LINE DIAGRAM				
SCALE:	SHEET NO.	OF	SHEETS	STA. TO STA.

F.A.P. RTE.	SECTION	COUNTY	TOTAL SHEETS	SHEET NO.
658		SANGAMON	16	7
CONTRACT NO. 72D19				
ILLINOIS FED. AID PROJECT				

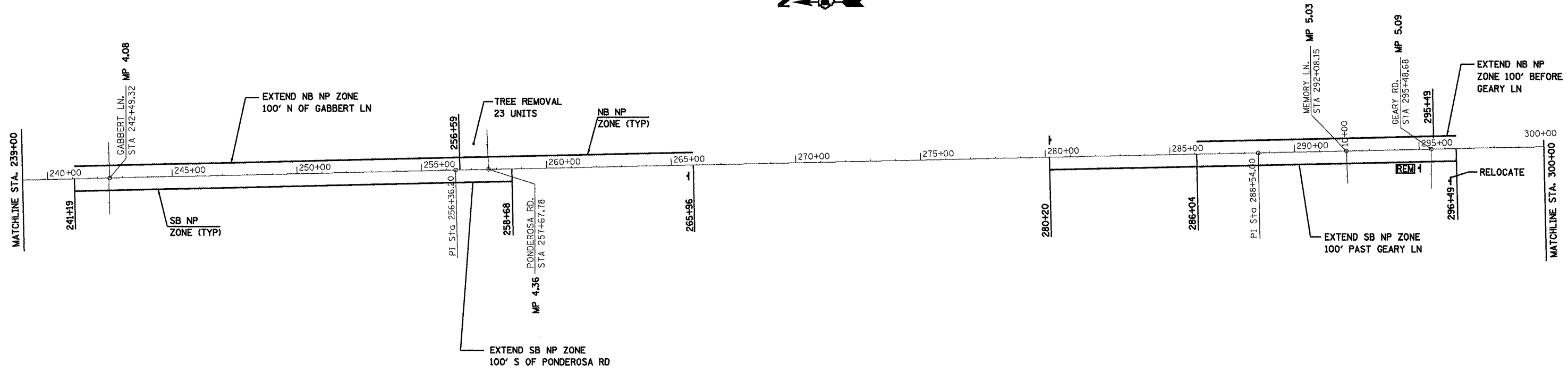
• D6 RUMBLESTRIP, MRKING 2010



NOTE: NO CENTERLINE RUMBLE STRIPS FROM STA 77+92 TO THE NCL OF CANTRALL (STA 108+18)

FILE NAME = \\pwwork\pwwork\LAUGHLIN\LD0157369\72019-shr-1\mediagram.dgn USER NAME = leughlinr1 DESIGNED - DRAWN - CHECKED - DATE -				REVISED - REVISED - REVISED - REVISED -				<b>STATE OF ILLINOIS DEPARTMENT OF TRANSPORTATION</b>				<b>LINE DIAGRAM</b>				F.A.P. RTE. 658		SECTION		COUNTY SANGAMON		TOTAL SHEETS 16		SHEET NO. 8	
PLOT SCALE = 400.0000' / 1"				PLOT DATE = Aug-28-2009 02:47:37PM												SCALE:		SHEET NO. OF SHEETS STA. TO STA.		CONTRACT NO. 72019					
• D6 RUMBLESTRIP, MRKING 2010																ILLINOIS FED. AID PROJECT									





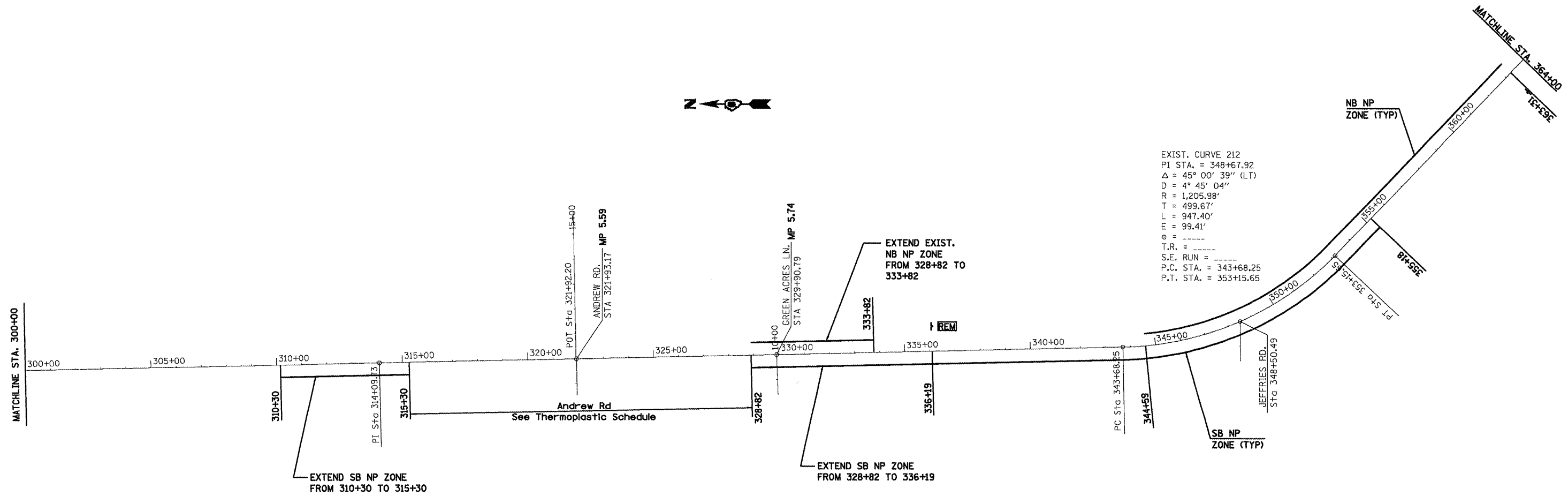
• D6 RUMBLESTRIP, MRKING 2010

FILE NAME =	USER NAME = laughlinr1	DESIGNED -	REVISED -
er\pwork\PWIDOT\LAUGHLINR1\0157369\1672019-shr-linediagram.dgn		DRAWN -	REVISED -
PLOT SCALE = 400,0000' / IN.		CHECKED -	REVISED -
PLOT DATE = Aug-28-2009 02:47:39PM		DATE -	REVISED -

**STATE OF ILLINOIS  
DEPARTMENT OF TRANSPORTATION**

LINE DIAGRAM				
SCALE:	SHEET NO.	OF	SHEETS	STA. TO STA.

F.A.P. RTE.	SECTION	COUNTY	TOTAL SHEETS	SHEET NO.
658	*	SANGAMON	16	9
CONTRACT NO. 72D19				
ILLINOIS FED. AID PROJECT				



• D6 RUMBLESTRIP, MRKING 2010

FILE NAME =	USER NAME = laughlinr1	DESIGNED -	REVISED -
c:\pwwork\FW100T\LAUGHLINRL\08157369\072019-shr-linediagram.dgn		DRAWN -	REVISED -
PLOT SCALE = 400.0000' / IN.		CHECKED -	REVISED -
PLOT DATE = Aug-28-2009 02:47:41PM		DATE -	REVISED -

**STATE OF ILLINOIS  
 DEPARTMENT OF TRANSPORTATION**

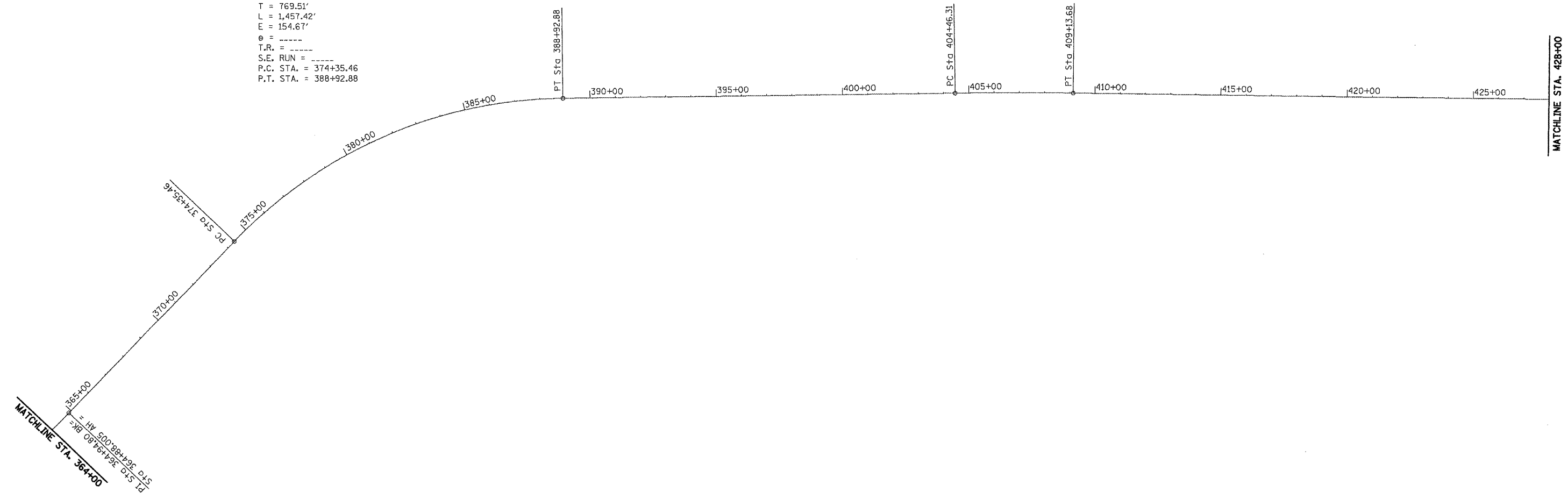
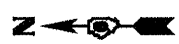
**LINE DIAGRAM**

SCALE: SHEET NO. OF SHEETS STA. TO STA.

F.A.P. RTE.	SECTION	COUNTY	TOTAL SHEETS	SHEET NO.
658		SANGAMON	16	10
CONTRACT NO. 72D19				
ILLINOIS FED. AID PROJECT				

EXIST. CURVE TA201  
 PI STA. = 382+04.97  
 $\Delta$  = 45° 27' 33" (RT)  
 D = 3° 07' 09"  
 R = 1,836.91'  
 T = 769.51'  
 L = 1,457.42'  
 E = 154.67'  
 $\theta$  = -----  
 T.R. = -----  
 S.E. RUN = -----  
 P.C. STA. = 374+35.46  
 P.T. STA. = 388+92.88

EXIST. CURVE TA202  
 PI STA. = 406+80.01  
 $\Delta$  = 1° 29' 36" (RT)  
 D = 0° 19' 10"  
 R = 17,930.50'  
 T = 233.70'  
 L = 467.37'  
 E = 1.52'  
 $\theta$  = -----  
 T.R. = -----  
 S.E. RUN = -----  
 P.C. STA. = 404+46.31  
 P.T. STA. = 409+13.68



• D6 RUMBLESTRIP, MRKING 2010

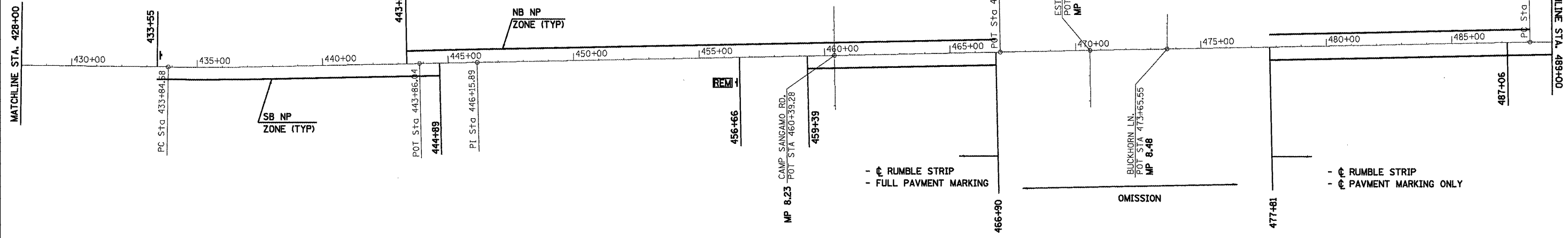
FILE NAME =	USER NAME = laughlinr-1	DESIGNED -	REVISED -
e:\pwwork\pwwork\LAUGHLINRL\0157369\072019-shr-1\linediagram.dgn		DRAWN -	REVISED -
PLOT SCALE = 400.0000' / IN.		CHECKED -	REVISED -
PLOT DATE = Aug-28-2009 02:47:43PM		DATE -	REVISED -

**STATE OF ILLINOIS  
 DEPARTMENT OF TRANSPORTATION**

LINE DIAGRAM				
SCALE:	SHEET NO.	OF SHEETS	STA.	TO STA.

F.A.P. RTE.	SECTION	COUNTY	TOTAL SHEETS	SHEET NO.
658	•	SANGAMON	16	11
CONTRACT NO. 72D19				
ILLINOIS FED. AID PROJECT				

EXIST. CURVE TA203  
 PI STA. = 435+69.65  
 $\Delta = 1^{\circ} 50' 07''$  (LT)  
 $D = 0^{\circ} 29' 46''$   
 $R = 11,548.22'$   
 $T = 184.97'$   
 $L = 369.91'$   
 $E = 1.48'$   
 $\theta = \text{-----}$   
 $T.R. = \text{-----}$   
 $S.E. \text{ RUN} = \text{-----}$   
 P.C. STA. = 433+84.68  
 P.T. STA. = 437+54.60



• D6 RUMBLESTRIP, MRKING 2010

FILE NAME =  
 e:\pwork\PW1001\LAUGHLINRL\0157369\072019-ahh-linediagram.dgn

USER NAME = laughlinr  
 PLOT SCALE = 400.0000' / IN.  
 PLOT DATE = Aug-29-2009 02:47:45PM

DESIGNED -	REVISED -
DRAWN -	REVISED -
CHECKED -	REVISED -
DATE -	REVISED -

**STATE OF ILLINOIS  
 DEPARTMENT OF TRANSPORTATION**

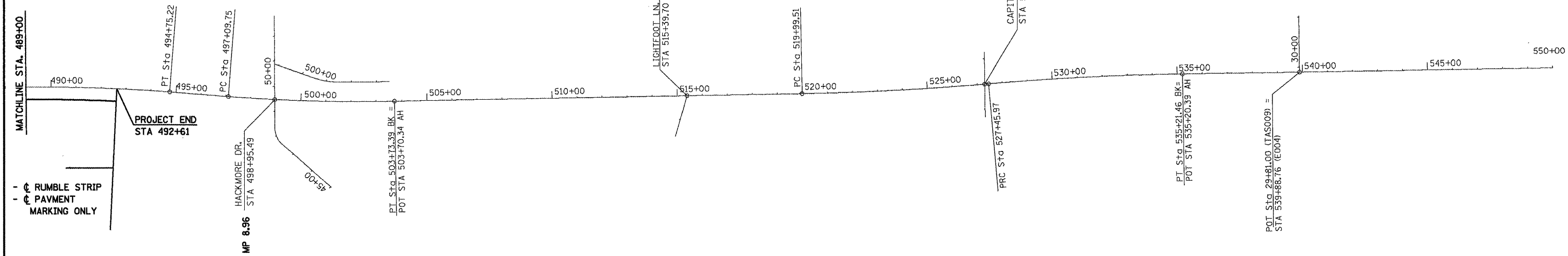
LINE DIAGRAM				
SCALE:	SHEET NO.	OF	SHEETS	STA. TO STA.

F.A.P. RTE.	SECTION	COUNTY	TOTAL SHEETS	SHEET NO.
658	•	SANGAMON	16	12
CONTRACT NO. 72D19				
ILLINOIS FED. AID PROJECT				

EXIST. CURVE 206  
 PI STA. = 491+43.99  
 $\Delta = 5^\circ 36' 41''$  (RT)  
 $D = 0^\circ 50' 47''$   
 $R = 6,769.50'$   
 $T = 331.76'$   
 $L = 663.00'$   
 $E = 8.12'$   
 $e = \text{-----}$   
 $T.R. = \text{-----}$   
 $S.E. \text{ RUN} = \text{-----}$   
 $P.C. \text{ STA.} = 488+12.23$   
 $P.T. \text{ STA.} = 494+75.22$



EXIST. CURVE 209  
 PI STA. = 531+33.87  
 $\Delta = 3^\circ 59' 12''$  (RT)  
 $D = 0^\circ 30' 51''$   
 $R = 11,145.20'$   
 $T = 387.90'$   
 $L = 775.49'$   
 $E = 6.75'$   
 $e = \text{-----}$   
 $T.R. = \text{-----}$   
 $S.E. \text{ RUN} = \text{-----}$   
 $P.C. \text{ STA.} = 527+45.97$   
 $P.T. \text{ STA.} = 535+21.46$



• D6 RUMBLESTRIP, MRKING 2010

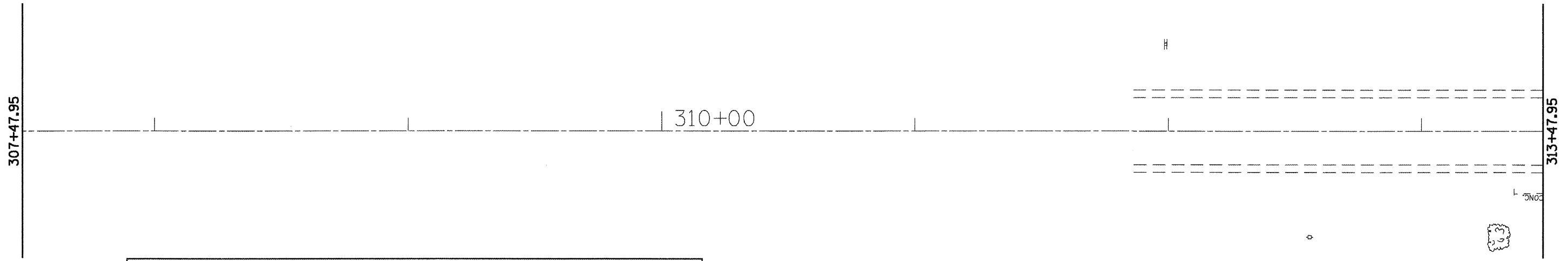
FILE NAME =	USER NAME = laughlrr1	DESIGNED -	REVISED -
es:\pwork\PM100T\LAUGHLINRL\20157369\72019-sh1-linediagram.dgn		DRAWN -	REVISED -
PLOT SCALE = 400.0000' / 1IN.		CHECKED -	REVISED -
PLOT DATE = Aug-28-2009 02:47:48PM		DATE -	REVISED -

STATE OF ILLINOIS  
 DEPARTMENT OF TRANSPORTATION

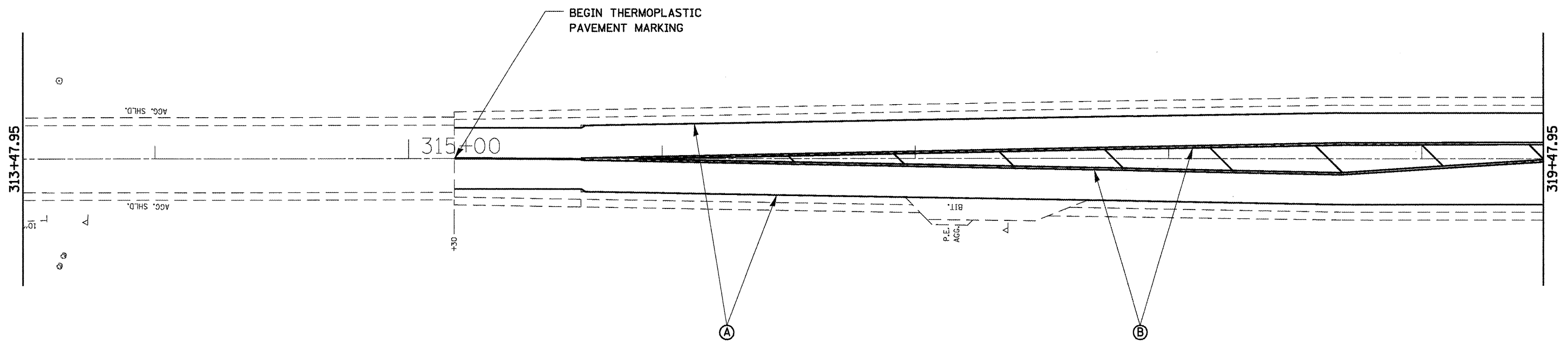
LINE DIAGRAM

SCALE: SHEET NO. OF SHEETS STA. TO STA.

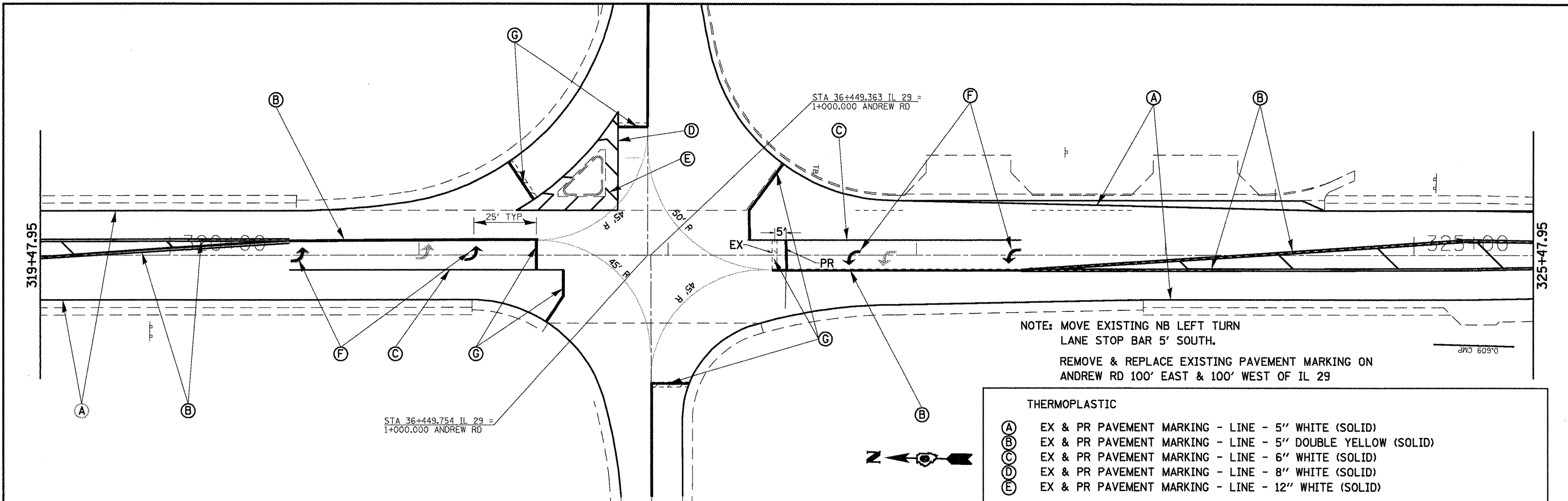
F.A.P. RTE.	SECTION	COUNTY	TOTAL SHEETS	SHEET NO.
658		SANGAMON	16	13
CONTRACT NO. 72019				
ILLINOIS FED. AID PROJECT				



THERMOPLASTIC	
(A)	EX & PR PAVEMENT MARKING - LINE - 5" WHITE (SOLID)
(B)	EX & PR PAVEMENT MARKING - LINE - 5" DOUBLE YELLOW (SOLID)
(C)	EX & PR PAVEMENT MARKING - LINE - 6" WHITE (SOLID)
(D)	EX & PR PAVEMENT MARKING - LINE - 8" WHITE (SOLID)
(E)	EX & PR PAVEMENT MARKING - LINE - 12" WHITE (SOLID)
PERFORMED PLASTIC	
(F)	EX PAVEMENT MARKING TY B INLAID - LETTERS & SYMBOLS - WHITE (SOLID) (PR THERMOPLASTIC)
(G)	EX PAVEMENT MARKING TY B INLAID - LINE - 24" WHITE (SOLID) (PR THERMOPLASTIC)



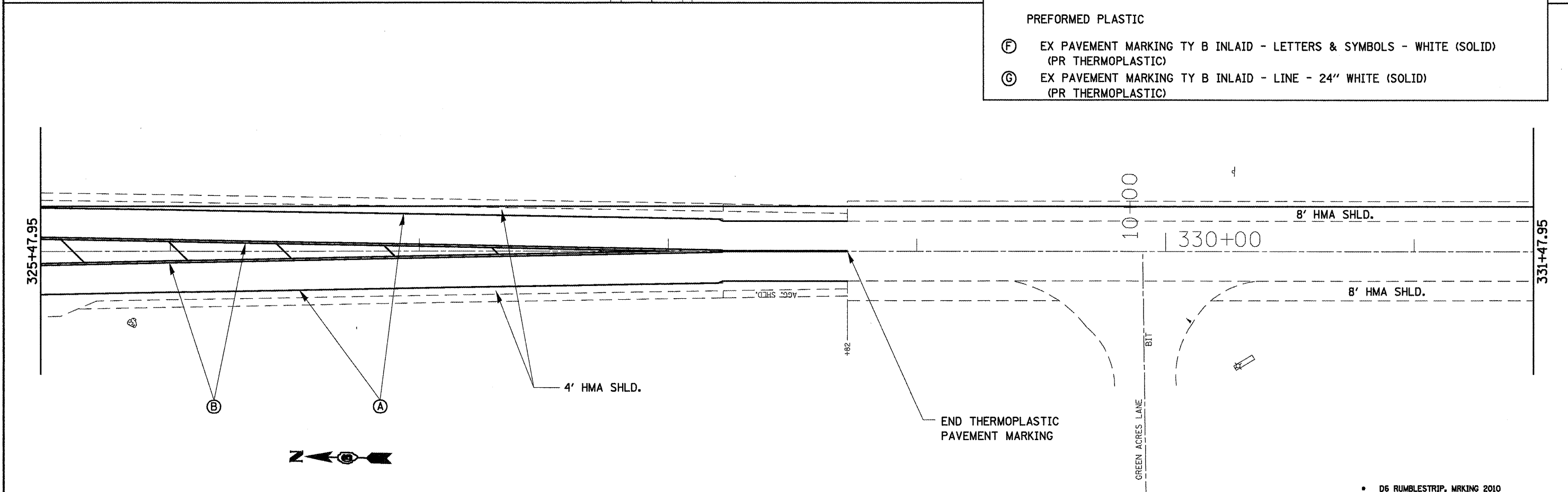
FILE NAME =	USER NAME = laughlinr1	DESIGNED -	REVISED -	<b>STATE OF ILLINOIS DEPARTMENT OF TRANSPORTATION</b>	<b>PAVEMENT MARKING PLAN</b>	F.A.P. RTE. 658	SECTION	COUNTY	TOTAL SHEETS	SHEET NO.
es:\pwwork\pwwid\DOT\LAUGHLINRL\ld0157389\072019-shk-IntPaveMark.dgn	DRAWN -	REVISED -					SANGAMON	16	14	
PLOT SCALE = 48.0000' / IN.	CHECKED -	REVISED -					CONTRACT NO. 72D19			
PLOT DATE = Aug-28-2009 02:47:58PM	DATE -	REVISED -					ILLINOIS FED. AID PROJECT			
		SCALE:			SHEET NO. OF SHEETS STA. TO STA.					



NOTE: MOVE EXISTING NB LEFT TURN LANE STOP BAR 5' SOUTH.

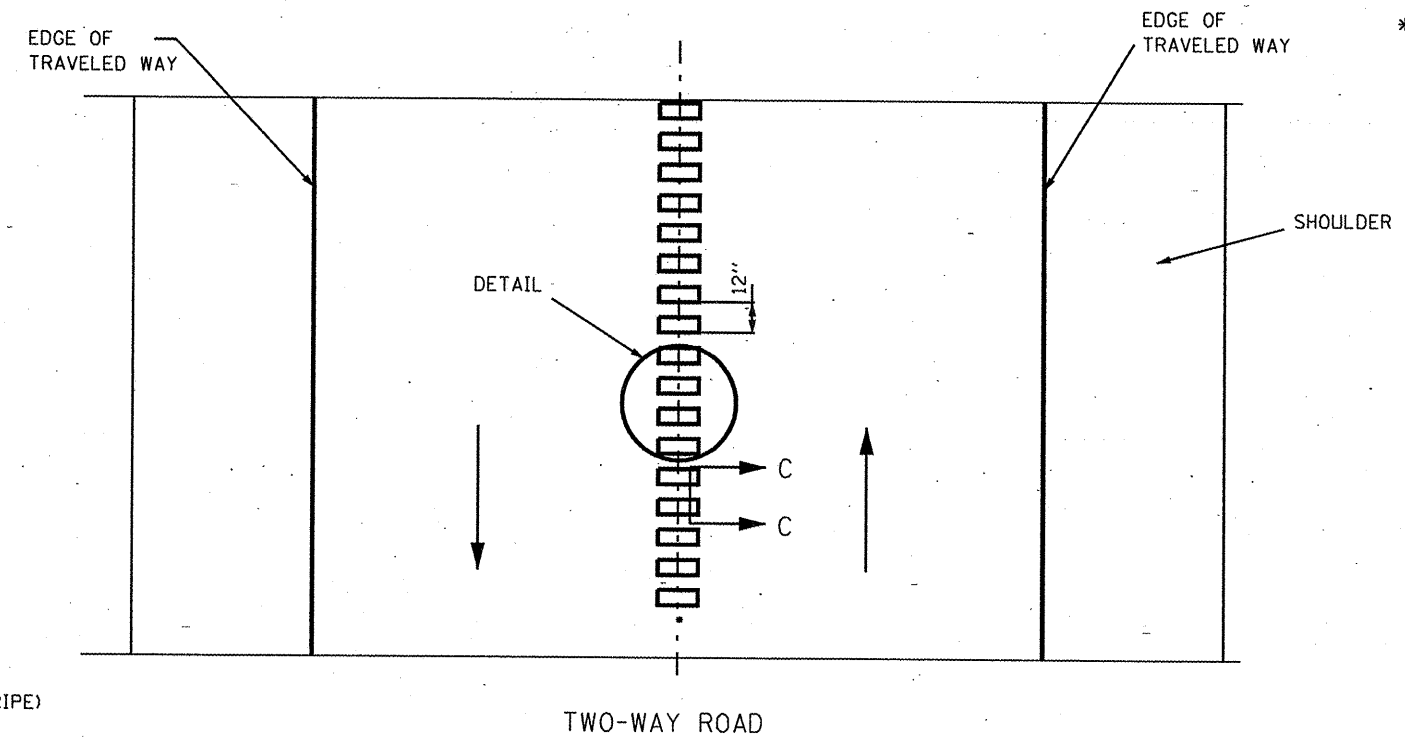
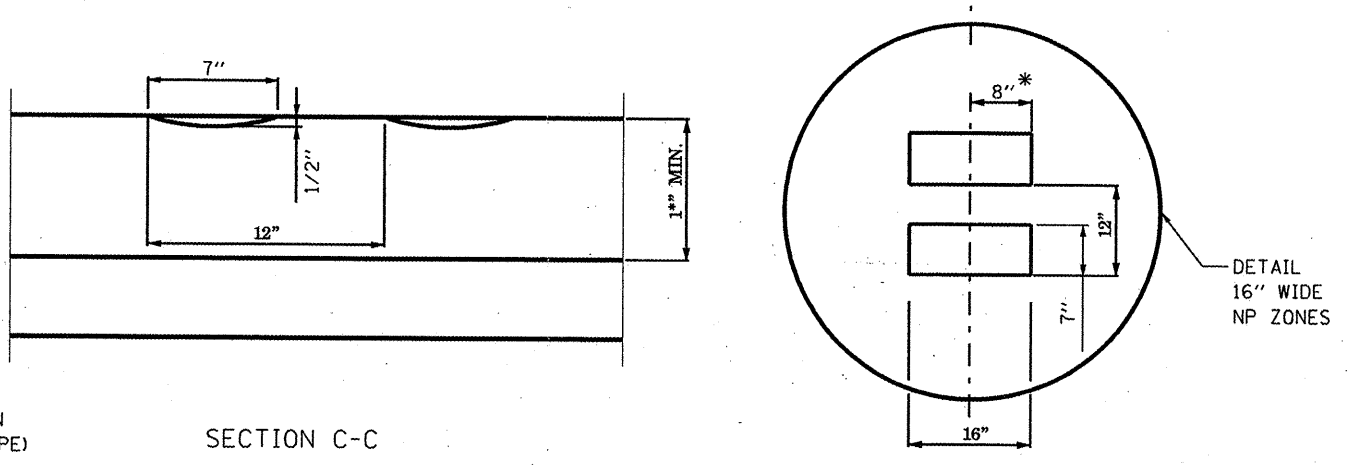
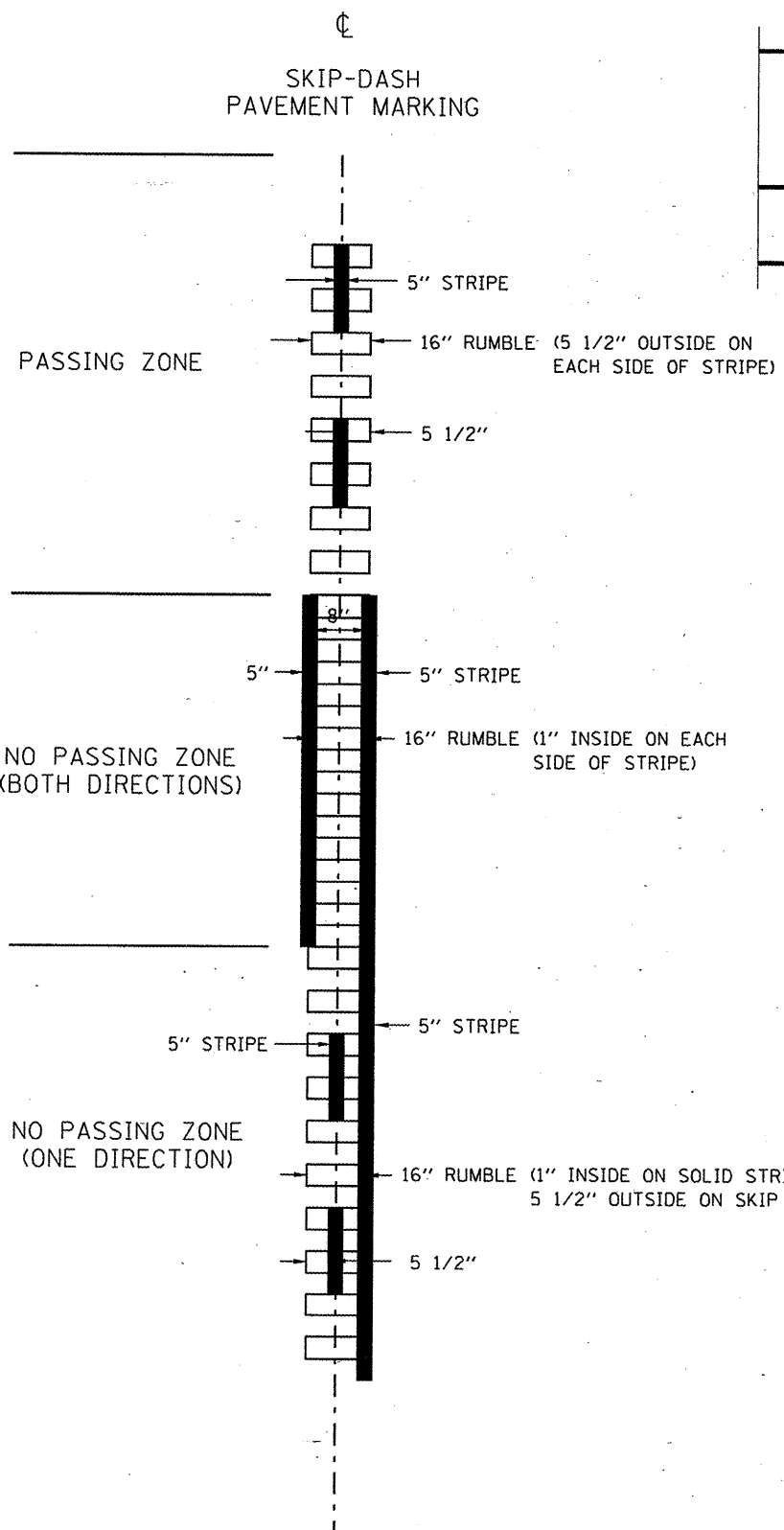
REMOVE & REPLACE EXISTING PAVEMENT MARKING ON ANDREW RD 100' EAST & 100' WEST OF IL 29

- THERMOPLASTIC**
- (A) EX & PR PAVEMENT MARKING - LINE - 5" WHITE (SOLID)
  - (B) EX & PR PAVEMENT MARKING - LINE - 5" DOUBLE YELLOW (SOLID)
  - (C) EX & PR PAVEMENT MARKING - LINE - 6" WHITE (SOLID)
  - (D) EX & PR PAVEMENT MARKING - LINE - 8" WHITE (SOLID)
  - (E) EX & PR PAVEMENT MARKING - LINE - 12" WHITE (SOLID)
- PREFORMED PLASTIC**
- (F) EX PAVEMENT MARKING TY B INLAID - LETTERS & SYMBOLS - WHITE (SOLID) (PR THERMOPLASTIC)
  - (G) EX PAVEMENT MARKING TY B INLAID - LINE - 24" WHITE (SOLID) (PR THERMOPLASTIC)



END THERMOPLASTIC PAVEMENT MARKING

FILE NAME =	USER NAME = joughlirr1	DESIGNED -	REVISED -	<b>STATE OF ILLINOIS DEPARTMENT OF TRANSPORTATION</b>	<b>PAVEMENT MARKING PLAN</b>			F.A.P. RTE.	SECTION	COUNTY	TOTAL SHEETS	SHEET NO.
c:\pwork\PM100T\LAUGH\INRL\d0157369\72019-shr-IntPaveMark.dgn		DRAWN -	REVISED -					658		SANGAMON	16	15
PLOT SCALE = 48.0000' / IN.		CHECKED -	REVISED -					CONTRACT NO. 72019				
PLOT DATE = Aug-28-2009 02:47:53PM		DATE -	REVISED -					ILLINOIS FED. AID PROJECT				
				SCALE:	SHEET NO.	OF	SHEETS	STA.	TO STA.			



\* = LATERAL DEVIATION SHALL NOT EXCEED ONE INCH IN 100 FEET.

GENERAL NOTES:

SKIP OVER EXISTING (4' GAP, 2' ON EACH SIDE) RAISED REFLECTIVE PAVEMENT MARKERS

RUMBLE STRIPS SHALL NOT BE PLACED ON BRIDGES.

ALL RUMBLE STRIPS SHALL BE MILLED.

CENTERLINE RUMBLE STRIPS SHALL NOT BE CONTINUOUS THROUGH CONNECTIONS OF SIDEROADS WITH NO LEFT TURN LANES.

DISCONTINUE CENTERLINE RUMBLE STRIPS THROUGH THE LIMITS OF ALL LEFT TURN LANES, INCLUDING ANY LANE TAPER SECTIONS.

FILE NAME =	USER NAME = madonievj	DESIGNED -	REVISED -
ct:\pwork\puidot\madonievj\0157369\06	2019-sht-detail.dgn	DRAWN -	REVISED -
	PLOT SCALE = 200.0000 / IN.	CHECKED -	REVISED -
	PLOT DATE = Mar-14-2010 03:40:19PM	DATE -	REVISED -

STATE OF ILLINOIS  
DEPARTMENT OF TRANSPORTATION

RUMBLE STRIPS CENTERLINE DETAIL			
SCALE:	SHEET NO.	OF SHEETS	STA. TO STA.

F.A.P. RTE.	SECTION	COUNTY	TOTAL SHEETS	SHEET NO.
658	.	**	16	16
CONTRACT NO. 72019				

• D6 RUMBLESTRIP MARKING 2010  
•• SANGAMON/MENARDS