

STATE OF ILLINOIS  
 DEPARTMENT OF TRANSPORTATION  
 DIVISION OF HIGHWAYS

**PROPOSED  
 HIGHWAY PLANS**

FAP ROUTE 322 (US 51)  
 SECTION D6 BUILDING DEMOLITION 2010-1

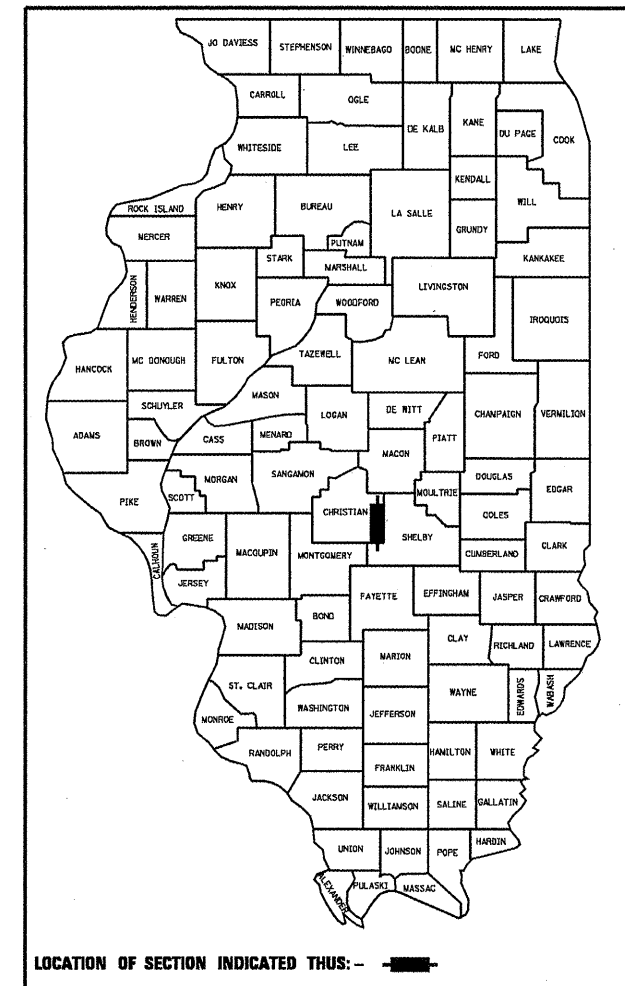
CHRISTIAN COUNTY

C-96-154-10

F.A.P. RTE.	SECTION	COUNTY	TOTAL SHEETS	SHEET NO.
322		CHRISTIAN	19	1
ILLINOIS CONTRACT NO. 72D30				

D6 BUILDING DEMOLITION 2010-1

D-96-154-10

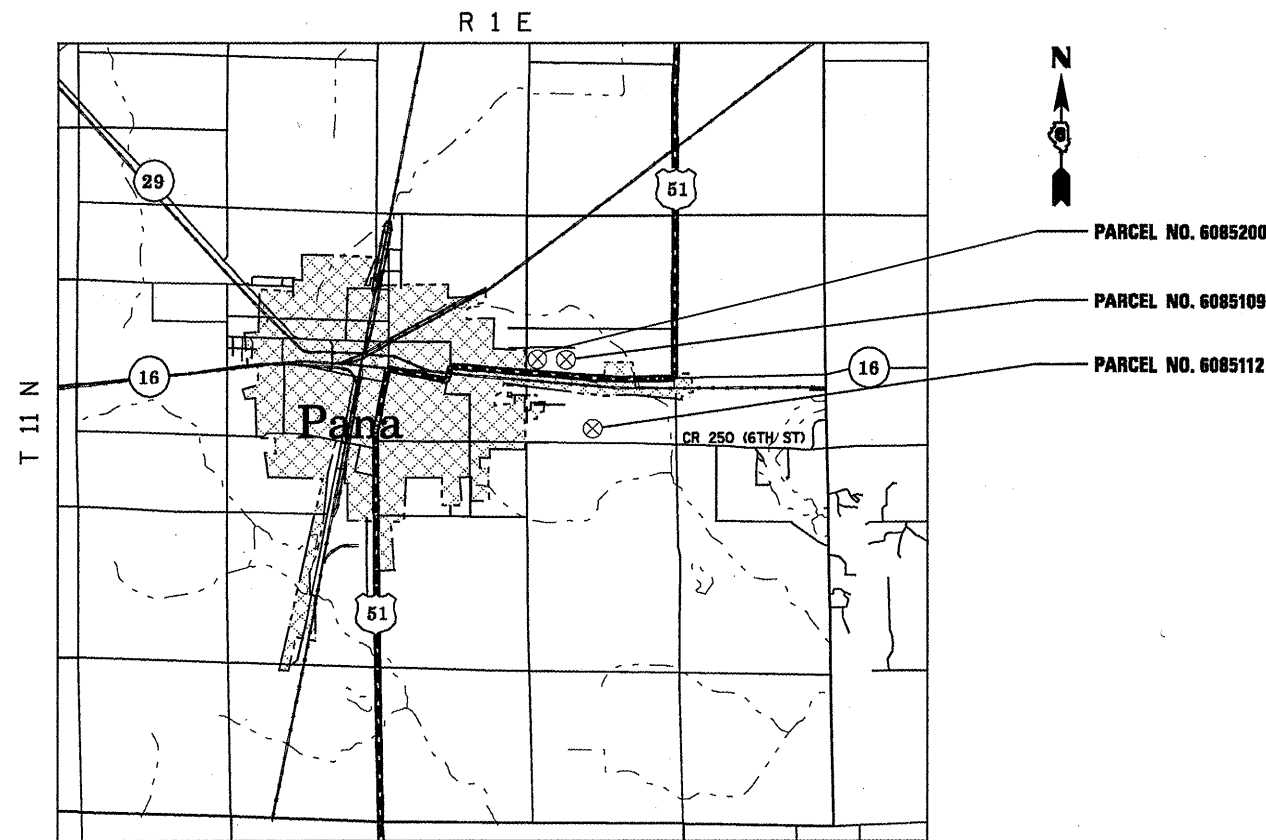


**INDEX OF SHEETS**

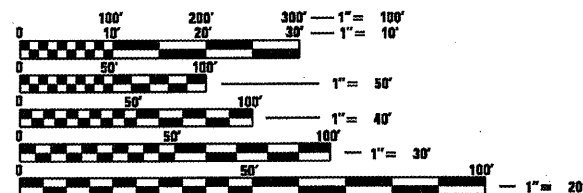
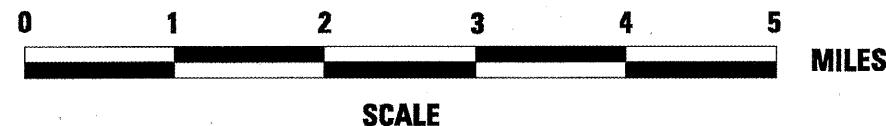
- 1 COVER SHEET
- 2 GENERAL NOTES
- 3-4 SUMMARY OF QUANTITIES
- 5-18 BUILDING DEMOLITION PLAN SHEETS
- 19 MATERIAL TABLE

**HIGHWAY STANDARDS**

- 000001-05
- 280001-05
- 701001-02
- 701301-03
- 701901-01



LOCATION MAP



FULL SIZE PLANS HAVE BEEN PREPARED USING STANDARD ENGINEERING SCALES. REDUCED SIZED PLANS WILL NOT CONFORM TO STANDARD SCALES. IN MAKING MEASUREMENTS ON REDUCED PLANS, THE ABOVE SCALES MAY BE USED.

J.U.L.I.E.  
 JOINT UTILITY LOCATION INFORMATION FOR EXCAVATION  
 1-800-992-0123  
 OR 811

PROJECT ENGINEER: SAL MADONIA PH 217-782-4761  
 TEAM ENGINEER: JEFF MYERS PH 217-524-7940

CONTRACT NO. 72D30

STATE OF ILLINOIS  
 DEPARTMENT OF TRANSPORTATION  
 DIVISION OF HIGHWAYS

SUBMITTED January 29, 2010  
Riga E. Stull  
 DEPUTY DIRECTOR OF HIGHWAYS, REGION ENGINEER

March 19, 2010  
Scott E. Stull, P.E.  
 Acting ENGINEER OF DESIGN AND ENVIRONMENT

March 19, 2010  
Christine M. Reed  
 DIRECTOR OF HIGHWAYS, CHIEF ENGINEER

PRINTED BY THE AUTHORITY  
 OF THE STATE OF ILLINOIS