

STATE OF ILLINOIS
DEPARTMENT OF TRANSPORTATION
DIVISION OF HIGHWAYS

**PROPOSED
HIGHWAY PLANS**

FAP ROUTE 322 (US 51)
SECTION D6 BUILDING DEMOLITION 2010-1

CHRISTIAN COUNTY

C-96-154-10

| F.A.P. RTE. | SECTION | COUNTY | TOTAL SHEETS | SHEET NO. |
|-----------------------------|---------|-----------|--------------|-----------|
| 322 | | CHRISTIAN | 19 | 1 |
| ILLINOIS CONTRACT NO. 72D30 | | | | |

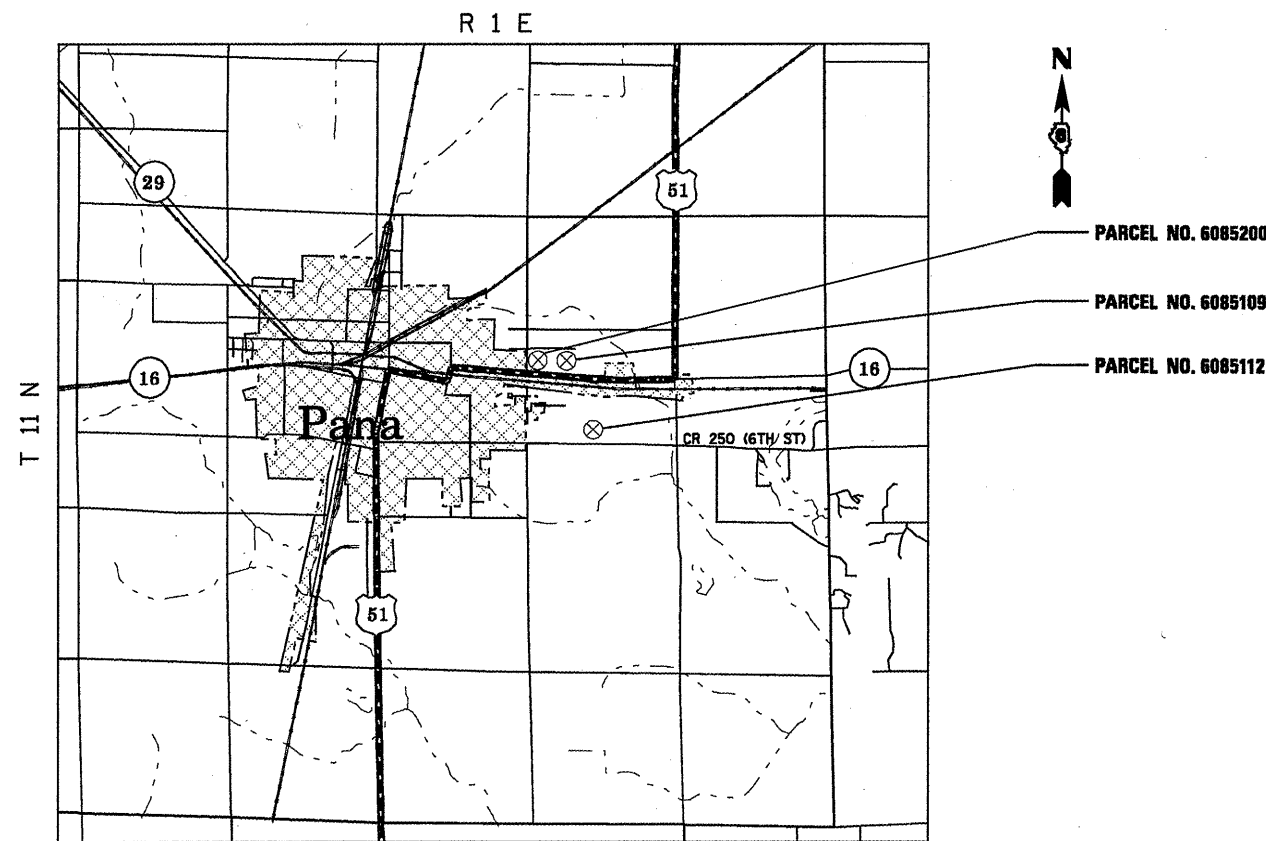
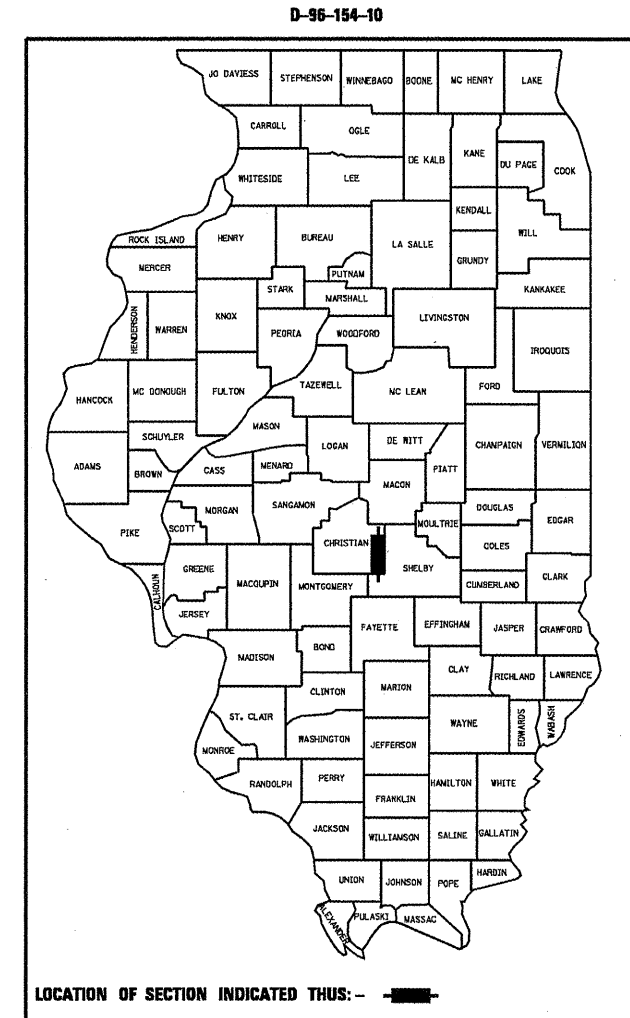
• D6 BUILDING DEMOLITION 2010-1

INDEX OF SHEETS

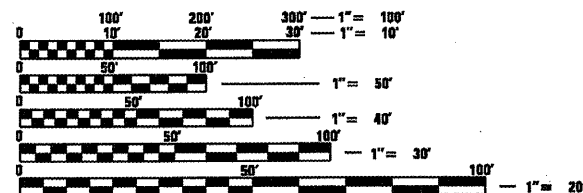
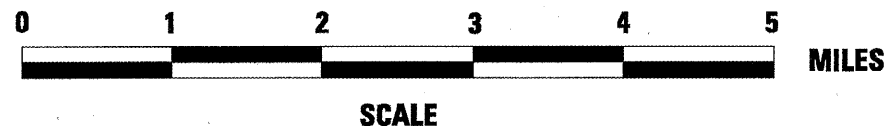
- 1 COVER SHEET
- 2 GENERAL NOTES
- 3-4 SUMMARY OF QUANTITIES
- 5-18 BUILDING DEMOLITION PLAN SHEETS
- 19 MATERIAL TABLE

HIGHWAY STANDARDS

- 000001-05
- 280001-05
- 701001-02
- 701301-03
- 701901-01



LOCATION MAP



FULL SIZE PLANS HAVE BEEN PREPARED USING STANDARD ENGINEERING SCALES. REDUCED SIZED PLANS WILL NOT CONFORM TO STANDARD SCALES. IN MAKING MEASUREMENTS ON REDUCED PLANS, THE ABOVE SCALES MAY BE USED.

J.U.L.I.E.
JOINT UTILITY LOCATION INFORMATION FOR EXCAVATION
1-800-992-0123
OR 811

PROJECT ENGINEER: SAL MADONIA PH 217-782-4761
TEAM ENGINEER: JEFF MYERS PH 217-524-7940

CONTRACT NO. 72D30

STATE OF ILLINOIS
DEPARTMENT OF TRANSPORTATION
DIVISION OF HIGHWAYS

SUBMITTED January 29, 2010

Riga [Signature]
DEPUTY DIRECTOR OF HIGHWAYS, REGION ENGINEER

March 19, 2010
Scott E. Stull, P.E.
Acting ENGINEER OF DESIGN AND ENVIRONMENT

March 19, 2010
Christine M. Reed
DIRECTOR OF HIGHWAYS, CHIEF ENGINEER

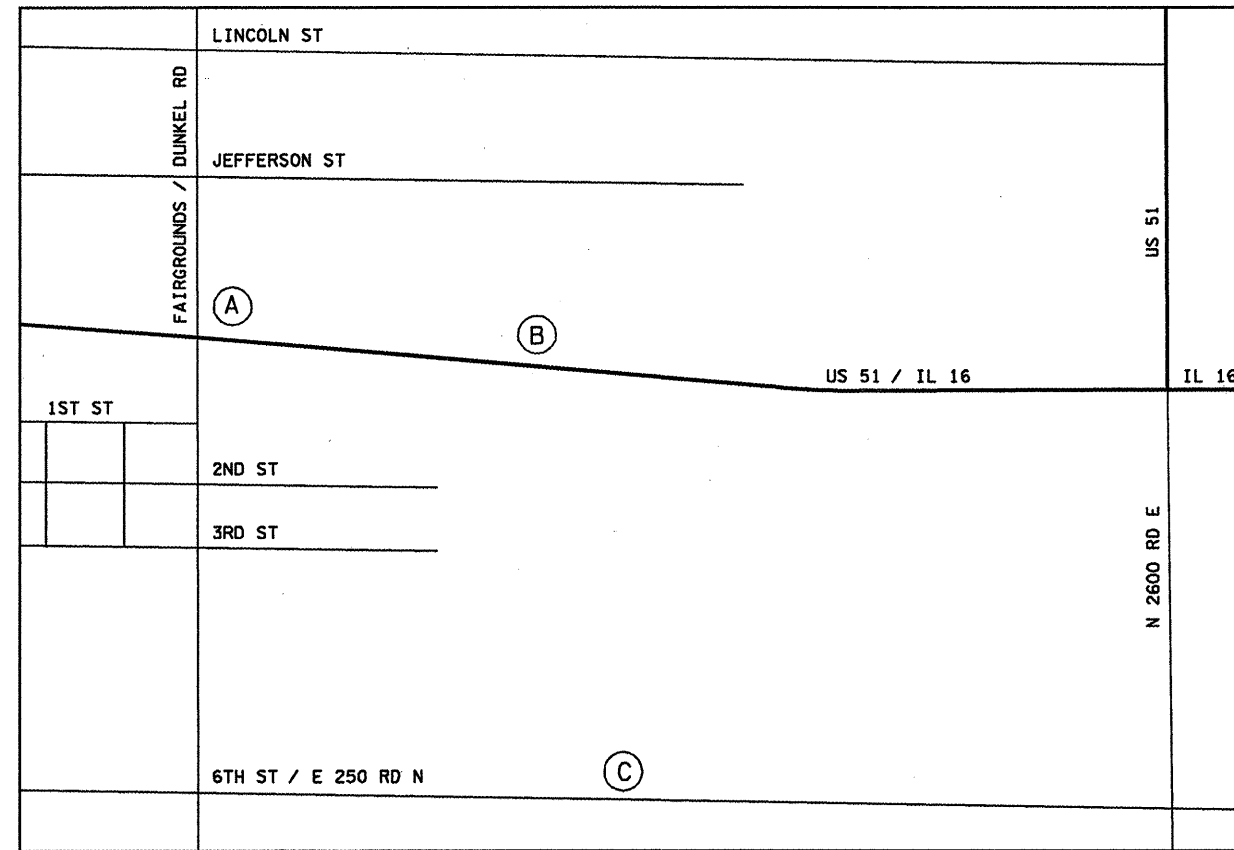
**PRINTED BY THE AUTHORITY
OF THE STATE OF ILLINOIS**

GENERAL NOTES

1. SEEDING WILL NOT BE PERMITTED AT ANY TIME WHEN THE GROUND IS FROZEN, WET OR IN AN UNTILLABLE CONDITION. LOCATIONS TO BE SEEDED SHALL BE DETERMINED BY THE ENGINEER.
2. THE CONTRACTOR SHALL BE RESPONSIBLE FOR PROTECTING UTILITY PROPERTY FROM CONSTRUCTION OPERATIONS AS OUTLINED IN ARTICLE 107.31 OF THE STANDARD SPECIFICATIONS. THE JULIE NUMBER IS 800-892-0123. A MINIMUM OF FORTY-EIGHT HOURS ADVANCE NOTICE IS REQUIRED. ANY DAMAGE TO THE UNDERGROUND FACILITIES, CAUSED BY THE CONTRACTOR, SHALL BE REPAIRED TO THE SATISFACTION OF THE DEPARTMENT AT THE CONTRACTOR'S EXPENSE, INCLUDING TEMPORARY REPAIRS WHICH MAY BE REQUIRED TO KEEP THE FACILITY OPERATIONAL WHILE MATERIALS IS BEING OBTAINED TO MAKE PERMANENT REPAIRS.
3. ANY REFERENCE TO A STANDARD IN THESE PLANS SHALL BE INTERPRETED TO MEAN THE EDITION AS INDICATED BY THE SUBNUMBER LISTED ON THE INDEX OF SHEETS OR THE COPY OF THE STANDARD INCLUDED IN THESE PLANS.

COMMITMENTS

THERE ARE NO COMMITMENTS ON THIS PROJECT.



- A - PARCEL 6085200 - NE CORNER OF FAIRGROUNDS / DUNKEL RD AND IL RT 16 E
- B - PARCEL 6085109 - 2526 IL RT 16 E
- C - PARCEL 6085112 - 2543 E 250 NORTH RD

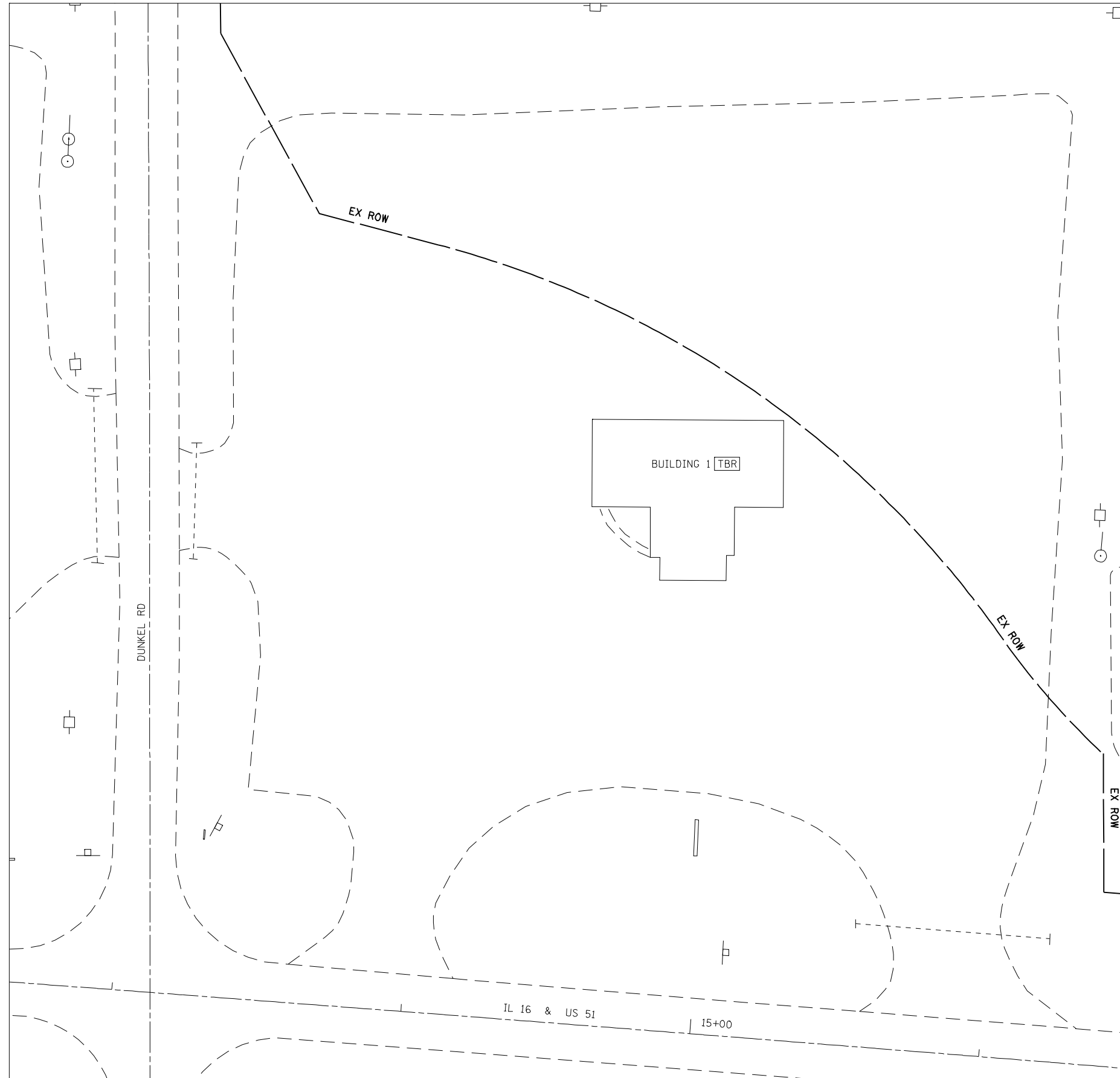
| DISTRICT SIX | |
|---------------------------------|------------------|
| EXAMINED | January 14 20 10 |
| <i>[Signature]</i> | |
| OPERATIONS ENGINEER | |
| EXAMINED | January 21 20 10 |
| <i>[Signature]</i> | |
| PROGRAM IMPLEMENTATION ENGINEER | |
| EXAMINED | January 27 20 10 |
| <i>[Signature]</i> | |
| PROGRAM DEVELOPMENT ENGINEER | |

| | | | | | | | | | | |
|--|-----------------------|------------|---------------------------|---|----------------------|---------------------|-----------|--------|--------------|-----------|
| FILE NAME = | USER NAME = leughlrr1 | DESIGNED - | REVISED - | STATE OF ILLINOIS DEPARTMENT OF TRANSPORTATION | GENERAL NOTES | F.A.P. RTE. | SECTION | COUNTY | TOTAL SHEETS | SHEET NO. |
| et:\pw_work\PWIDOT\LAUGHLIN\1616%063\1672038-aht-gennote.dgn | DRAWN - | REVISED - | 322 | | | * | CHRISTIAN | 19 | 2 | |
| PLOT SCALE = 100.0000' / IN. | CHECKED - | REVISED - | CONTRACT NO. 72D30 | | | | | | | |
| PLOT DATE = Jan-20-2010 01:34:40PM | DATE - | REVISED - | ILLINOIS FED. AID PROJECT | | | | | | | |
| | | | | | SCALE: | SHEET NO. OF SHEETS | | STA. | TO STA. | |

ILLINOIS DEPARTMENT OF TRANSPORTATION
SUMMARY OF QUANTITIES

| LOCATION OF WORK | | | | <i>URBAN</i> 100% STATE |
|-----------------------|-----------------------------------|-------|----------------|----------------------------|
| SUMMARY OF QUANTITIES | | | | CONSTRUCTION TYPE CODE |
| CODE NO. | ITEM | UNIT | TOTAL QUANTITY | <i>Y004</i> |
| 25000200 | SEEDING, CLASS 2 | ACRE | 3.75 | 3.75 |
| 25000400 | NITROGEN FERTILIZER NUTRIENT | POUND | 338 | 338 |
| 25000500 | PHOSPHORUS FERTILIZER NUTRIENT | POUND | 338 | 338 |
| 25000600 | POTASSIUM FERTILIZER NUTRIENT | POUND | 338 | 338 |
| 25100115 | MULCH, METHOD 2 | ACRE | 3.75 | 3.75 |
| 28000250 | TEMPORARY EROSION CONTROL SEEDING | POUND | 375 | 375 |
| 28000400 | PERIMETER EROSION BARRIER | FOOT | 2,254 | 2,254 |
| 40200800 | AGGREGATE SURFACE COURSE, TYPE B | TON | 94 | 94 |
| 67100100 | MOBILIZATION | L SUM | 1 | 1 |
| 67201000 | SEALING ABANDONED WATER WELLS | EACH | 1 | 1 |
| 70103700 | TRAFFIC CONTROL COMPLETE | L SUM | 1 | 1 |
| Z0007601 | BUILDING REMOVAL NO. 1 | L SUM | 1 | 1 |
| Z0007602 | BUILDING REMOVAL NO. 2 | L SUM | 1 | 1 |

PARCEL NUMBER 6085200



QUANTITIES

| | | | |
|--|---|---|-----|
| BUILDING REMOVAL NO. 1 | 1 | L | SUM |
| REM & DISP OF NON-FRIABLE ASBESTOS, BUILDING NO. 1 | 1 | L | SUM |

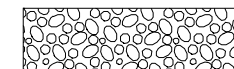
| | | | | | | | | | | | | | |
|---|------------------------|------------|-----------|---|---|-----------|-----------|------|--------------------|---------------------------|--------|--------------|-----------|
| FILE NAME = | USER NAME = laughlinr1 | DESIGNED - | REVISED - | STATE OF ILLINOIS DEPARTMENT OF TRANSPORTATION | PARCEL NUMBER 6085200 PLAN SHEET | | | | F.A.P. RTE. | SECTION | COUNTY | TOTAL SHEETS | SHEET NO. |
| e:\pwork\pwidot\LAUGHLINRL\0169063\0672030-shr-plan.dgn | | DRAWN - | REVISED - | | 322 | * | CHRISTIAN | 19 | 5 | | | | |
| PLOT SCALE = 40.0000' / IN. | | CHECKED - | REVISED - | | | | | | CONTRACT NO. 72D30 | | | | |
| PLOT DATE = Jan-28-2010 01:31:36PM | | DATE - | REVISED - | | SCALE: | SHEET NO. | OF SHEETS | STA. | TO STA. | ILLINOIS FED. AID PROJECT | | | |

PARCEL NUMBER 6085200



QUANTITIES

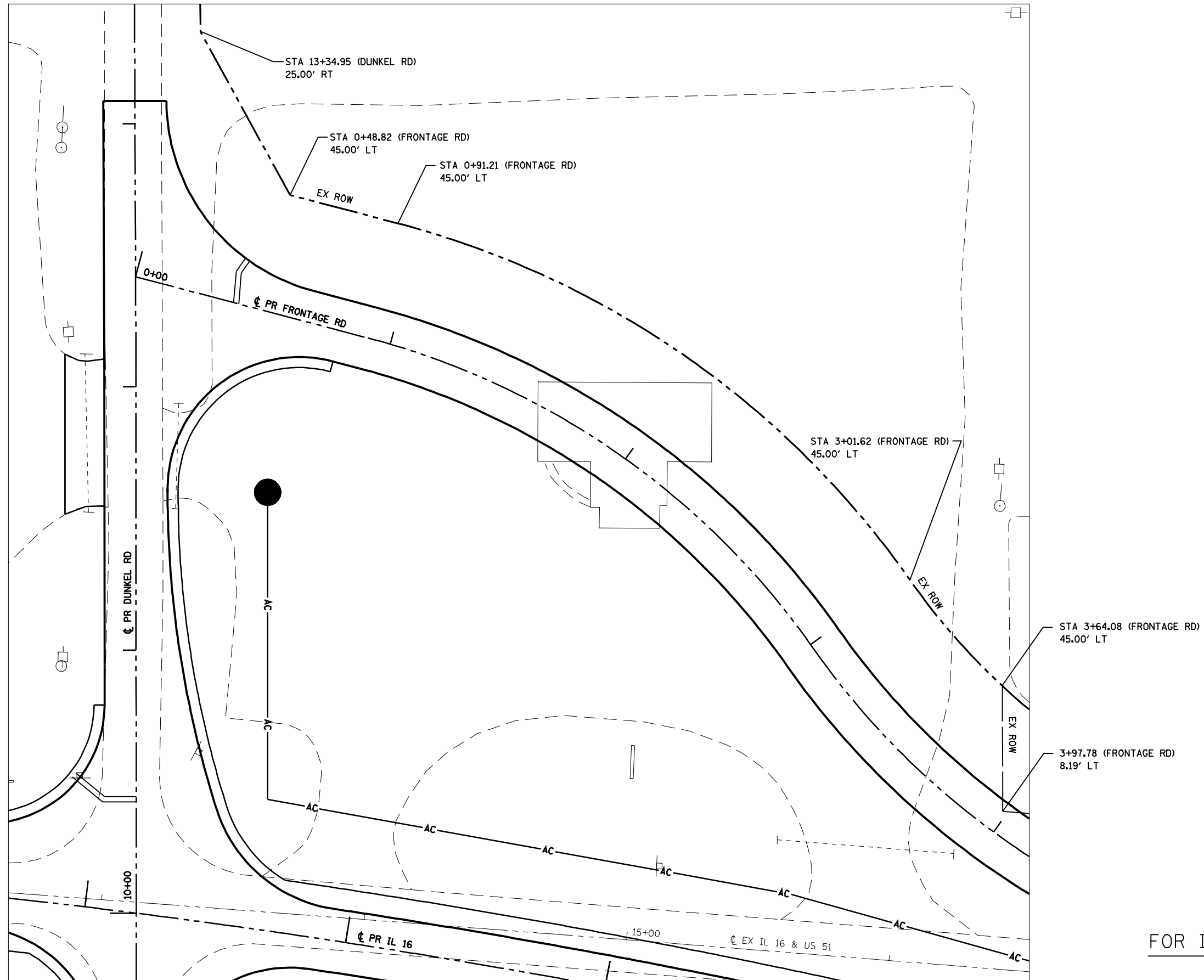
AGGREGATE SURFACE COURSE, TYPE B 94 TON



AGGREGATE SURFACE COURSE, TYPE B

| | | | | | | | | | | | | | |
|---|------------------------|------------|-----------|---|---|-----------|-----------|------|--------------------|--------------------|---------------------|--------------------|----------------|
| FILE NAME = e:\pwork\pwork\LAUGHLINRL\0169063\0672030-shr-plan.dgn | USER NAME = laughlinr1 | DESIGNED - | REVISED - | STATE OF ILLINOIS DEPARTMENT OF TRANSPORTATION | PARCEL NUMBER 6085200 SEEDING PLAN SHEET | | | | F.A.P. RTE. 322 | SECTION • | COUNTY CHRISTIAN | TOTAL SHEETS 19 | SHEET NO. 6 |
| PLOT SCALE = 40.0000' / IN. | CHECKED - | REVISED - | REVISED - | | SCALE: | SHEET NO. | OF SHEETS | STA. | TO STA. | CONTRACT NO. 72D30 | | | |
| PLOT DATE = Jan-28-2010 01:31:40PM | DATE - | REVISED - | REVISED - | | ILLINOIS FED. AID PROJECT | | | | | | | | |
| • D6 BUILDING DEMOLITION 2010-1 | | | | | | | | | | | | | |

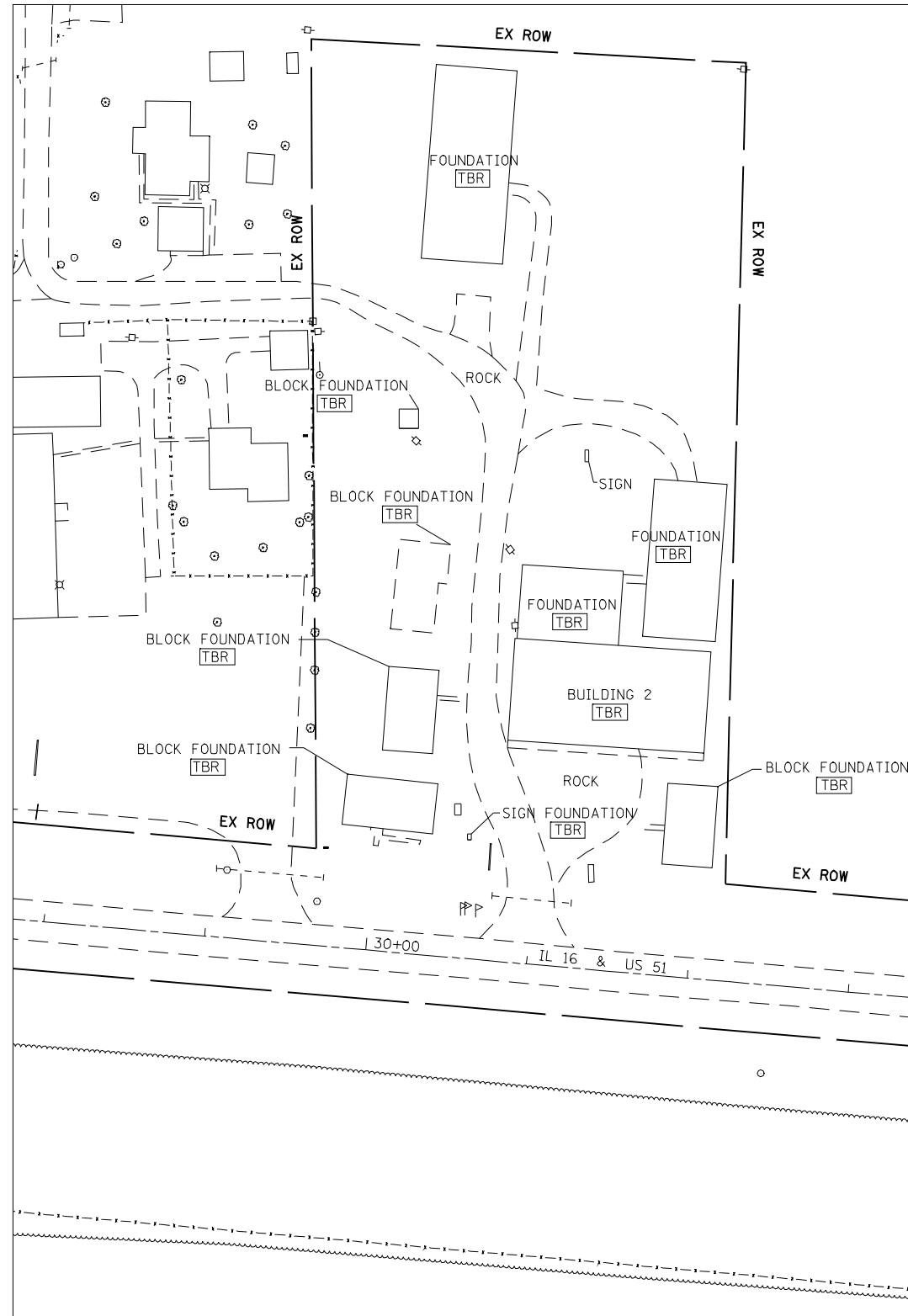
PARCEL NUMBER 6085200



FOR INFORMATION ONLY

| | | | | | | | | | | | | | |
|--|------------------------|------------|-----------|---|--|-----------|-----------|------|--------------------|---------------------------|--------|--------------|-----------|
| FILE NAME = | USER NAME = laughlinr1 | DESIGNED - | REVISED - | STATE OF ILLINOIS DEPARTMENT OF TRANSPORTATION | PARCEL NUMBER 6085200 FUTURE FOUR LANE PLAN SHEET | | | | F.A.P. RTE. | SECTION | COUNTY | TOTAL SHEETS | SHEET NO. |
| e:\pwork\pwork\LAUGHLINRL\0169063\0672030-shr-plan.dgn | | DRAWN - | REVISED - | | 322 | * | CHRISTIAN | 19 | 7 | | | | |
| PLOT SCALE = 40.0000' / IN. | | CHECKED - | REVISED - | | | | | | CONTRACT NO. 72D30 | | | | |
| PLOT DATE = Jan-27-2010 11:30:57AM | | DATE - | REVISED - | | SCALE: | SHEET NO. | OF SHEETS | STA. | TO STA. | ILLINOIS FED. AID PROJECT | | | |

PARCEL NUMBER 6085109

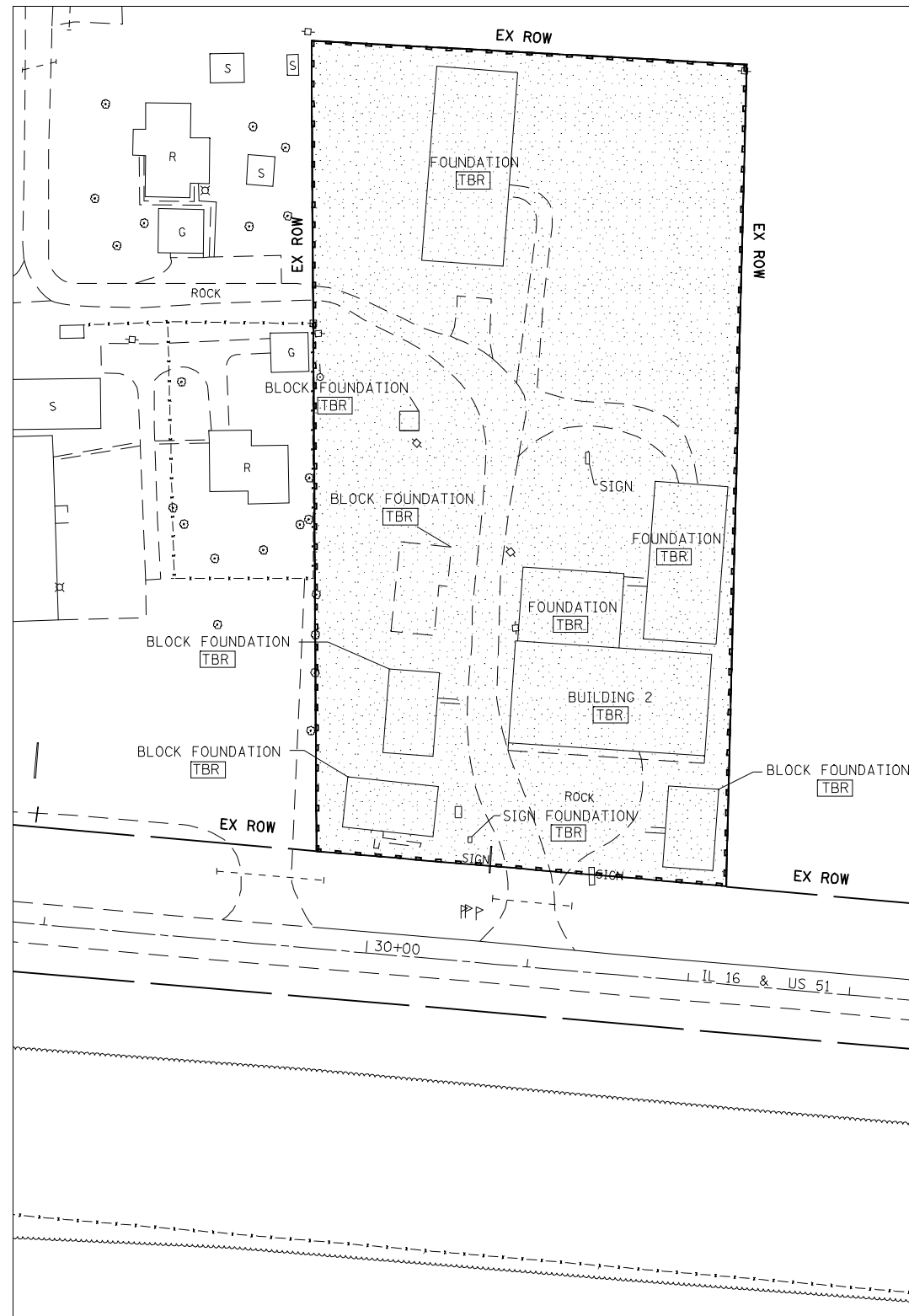


QUANTITIES

| | | |
|--|---|-------|
| BUILDING REMOVAL NO. 2 | 1 | L SUM |
| REM & DISP OF NON-FRIABLE ASBESTOS, BUILDING NO. 2 | 1 | L SUM |

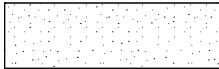

| | | | | | | | | | | | | | |
|--|------------------------|------------|-----------|---|---|-----------|-----------|------|---------------------------|---------|--------|--------------|-----------|
| FILE NAME = | USER NAME = laughlinr1 | DESIGNED - | REVISED - | STATE OF ILLINOIS DEPARTMENT OF TRANSPORTATION | PARCEL NUMBER 6085109 PLAN SHEET | | | | F.A.P. RTE. | SECTION | COUNTY | TOTAL SHEETS | SHEET NO. |
| e:\pwwork\PWIDOT\LAUGHLINRL\0169063\0672030-shr-plan.dgn | | DRAWN - | REVISED - | | 322 | * | CHRISTIAN | 19 | 8 | | | | |
| PLOT SCALE = 100.0000' / IN. | | CHECKED - | REVISED - | | CONTRACT NO. 72D30 | | | | ILLINOIS FED. AID PROJECT | | | | |
| PLOT DATE = Jan-28-2010 01:31:44PM | | DATE - | REVISED - | | SCALE: | SHEET NO. | OF SHEETS | STA. | TO STA. | | | | |

PARCEL NUMBER 6085109



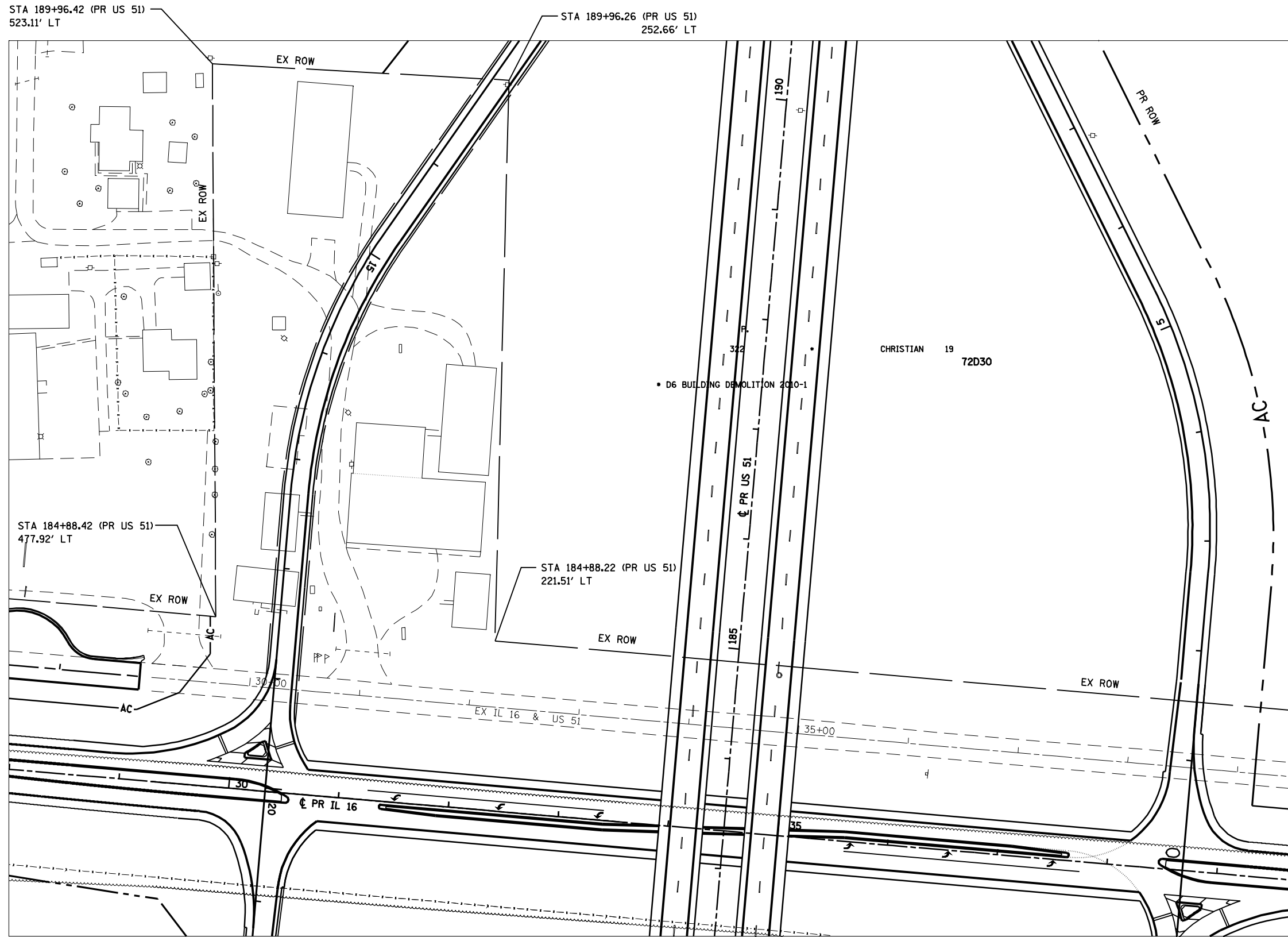
QUANTITIES

| | | |
|-----------------------------------|-------|-------|
| SEEDING, CLASS 2 | 3.03 | ACRE |
| NITROGEN FERTILIZER NUTRIENT | 273 | POUND |
| PHOSPHORUS FERTILIZER NUTRIENT | 273 | POUND |
| POTASSIUM FERTILIZER NUTRIENT | 273 | POUND |
| MULCH, METHOD 2 | 3.03 | ACRE |
| PERIMETER EROSION BARRIER | 1,534 | FOOT |
| TEMPORARY EROSION CONTROL SEEDING | 303 | POUND |

| | |
|---|---------------------------|
|  | SEEDING, CLASS 2 |
|  | PERIMETER EROSION BARRIER |

| | | | | | | | | | | | | | |
|---|------------------------|------------|-----------|---|---|-----------|-----------|------|---------------------------|---------|--------|--------------|-----------|
| FILE NAME = | USER NAME = laughlinr1 | DESIGNED - | REVISED - | STATE OF ILLINOIS DEPARTMENT OF TRANSPORTATION | PARCEL NUMBER 6085109 SEEDING PLAN SHEET | | | | F.A.P. RTE. | SECTION | COUNTY | TOTAL SHEETS | SHEET NO. |
| e:\pwwork\pwwid\LAUGHLINRL\0169063\0672030-shr-plan.dgn | | DRAWN - | REVISED - | | 322 | * | CHRISTIAN | 19 | 9 | | | | |
| PLOT SCALE = 100.0000' / IN. | | CHECKED - | REVISED - | | CONTRACT NO. 72D30 | | | | ILLINOIS FED. AID PROJECT | | | | |
| PLOT DATE = Jan-28-2010 01:31:48PM | | DATE - | REVISED - | | SCALE: | SHEET NO. | OF SHEETS | STA. | TO STA. | | | | |

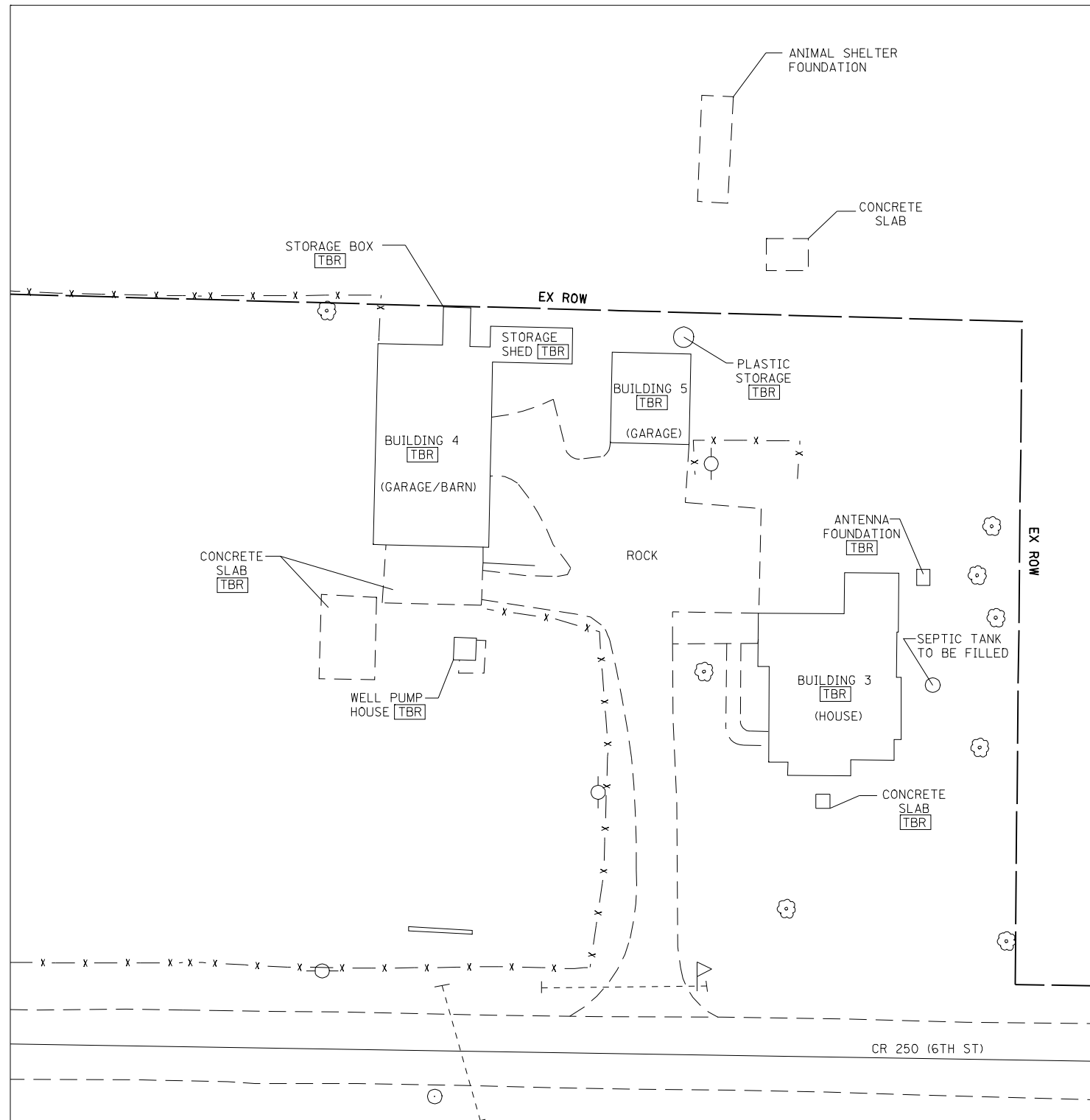
PARCEL NUMBER 6085109



FOR INFORMATION ONLY

| | | | | | | | | | | | | |
|--|------------------------------|------------|-----------|---|--|-----------|------|--------------------|---------------------------------|---------------------|--------------------|-----------------|
| FILE NAME = e:\pwork\pwork\LAUGHLINRL\0169063\072030-shr-plan.dgn | USER NAME = laughlinr1 | DESIGNED - | REVISED - | STATE OF ILLINOIS DEPARTMENT OF TRANSPORTATION | PARCEL NUMBER 6085109 FUTURE FOUR LANE PLAN SHEET | | | F.A.P. RTE. 322 | SECTION • | COUNTY CHRISTIAN | TOTAL SHEETS 19 | SHEET NO. 10 |
| | PLOT SCALE = 100.0000' / IN. | CHECKED - | REVISED - | | | | | CONTRACT NO. 72D30 | ILLINOIS FED. AID PROJECT | | | |
| PLOT DATE = Jan-27-2010 11:31:09AM | DATE - | REVISED - | REVISED - | SCALE: | SHEET NO. | OF SHEETS | STA. | TO STA. | • D6 BUILDING DEMOLITION 2010-1 | | | |

PARCEL NUMBER 6085112

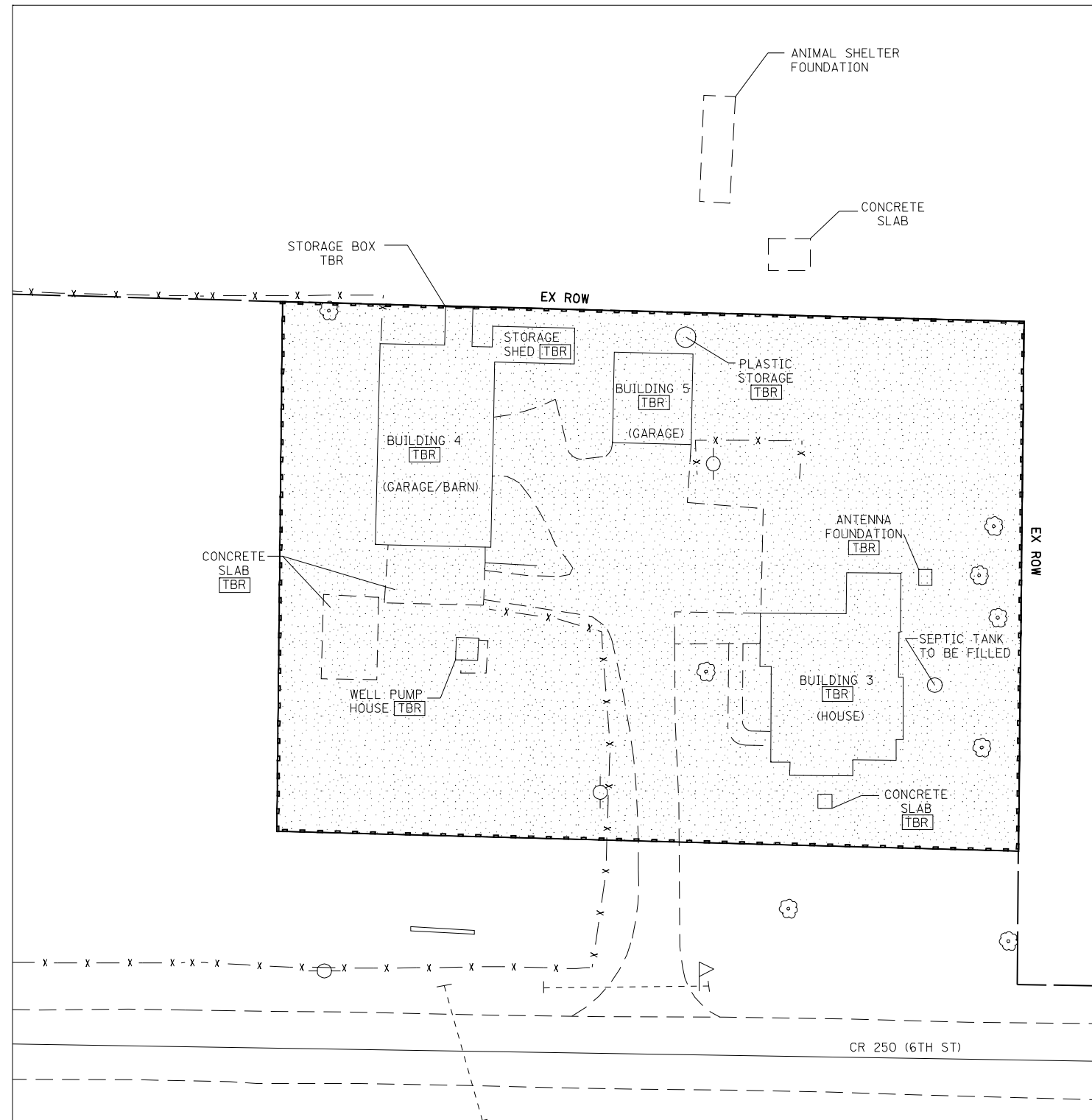


QUANTITIES

| | | |
|--|---|-------|
| SEALING ABANDONED WATER WELLS | 1 | EACH |
| BUILDING REMOVAL NO. 3 | 1 | L SUM |
| BUILDING REMOVAL NO. 4 | 1 | L SUM |
| BUILDING REMOVAL NO. 5 | 1 | L SUM |
| FILLING EXISTING SEPTIC TANK | 1 | EACH |
| REM & DISP OF FRIABLE ASBESTOS, BUILDING NO. 3 | 1 | L SUM |
| REM & DISP OF NON-FRIABLE ASBESTOS, BUILDING NO. 3 | 1 | L SUM |
| REM & DISP OF NON-FRIABLE ASBESTOS, BUILDING NO. 5 | 1 | L SUM |

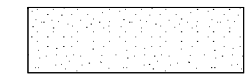
| | | | | | | | | | | | | | |
|--|------------------------|------------|-----------|---|---|-----------|-----------|------|---------------------------|---------|--------|--------------|-----------|
| FILE NAME = | USER NAME = laughlinr1 | DESIGNED - | REVISED - | STATE OF ILLINOIS DEPARTMENT OF TRANSPORTATION | PARCEL NUMBER 6085112 PLAN SHEET | | | | F.A.P. RTE. | SECTION | COUNTY | TOTAL SHEETS | SHEET NO. |
| e:\pwwork\pwidot\LAUGHLINRL\0169063\0672030-shr-plan.dgn | | DRAWN - | REVISED - | | 322 | . | CHRISTIAN | 19 | 11 | | | | |
| PLOT SCALE = 40.0000' / IN. | | CHECKED - | REVISED - | | CONTRACT NO. 72D30 | | | | ILLINOIS FED. AID PROJECT | | | | |
| PLOT DATE = Jan-28-2010 01:31:52PM | | DATE - | REVISED - | | SCALE: | SHEET NO. | OF SHEETS | STA. | TO STA. | | | | |

PARCEL NUMBER 6085112



QUANTITIES

| | |
|-----------------------------------|-----------|
| SEEDING, CLASS 2 | 0.73 ACRE |
| NITROGEN FERTILIZER NUTRIENT | 65 POUND |
| PHOSPHORUS FERTILIZER NUTRIENT | 65 POUND |
| POTASSIUM FERTILIZER NUTRIENT | 65 POUND |
| MULCH, METHOD 2 | 0.73 ACRE |
| PERIMETER EROSION BARRIER | 720 FOOT |
| TEMPORARY EROSION CONTROL SEEDING | 73 POUND |



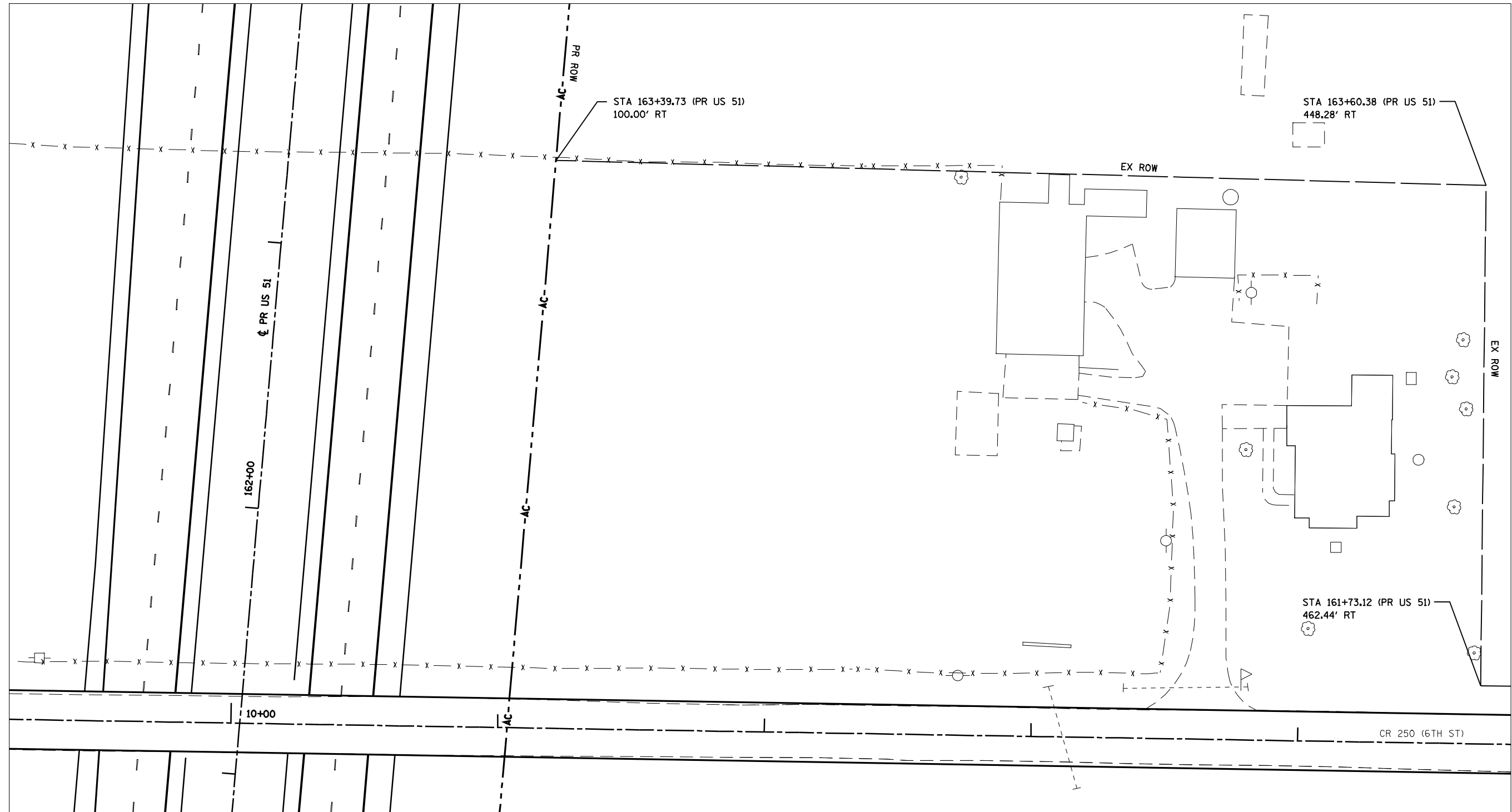
SEEDING, CLASS 2



PERIMETER EROSION BARRIER

| | | | | | | | | | | | | | |
|--|------------------------------------|------------|-----------|---|---|-----------|-----------|------|-----------------|--------------------|------------------|-----------------|--------------|
| FILE NAME = | USER NAME = laughlinr1 | DESIGNED - | REVISED - | STATE OF ILLINOIS DEPARTMENT OF TRANSPORTATION | PARCEL NUMBER 6085112 SEEDING PLAN SHEET | | | | F.A.P. RTE. 322 | SECTION * | COUNTY CHRISTIAN | TOTAL SHEETS 19 | SHEET NO. 12 |
| es:\pwork\PWIDOT\LAUGHLINRL\0169063\0672030-shr-plan.dgn | | DRAWN - | REVISED - | | SCALE: | SHEET NO. | OF SHEETS | STA. | TO STA. | CONTRACT NO. 72D30 | | | |
| | PLOT SCALE = 40.0000' / IN. | CHECKED - | REVISED - | | ILLINOIS FED. AID PROJECT | | | | | | | | |
| | PLOT DATE = Jan-28-2010 01:31:56PM | DATE - | REVISED - | | * D6 BUILDING DEMOLITION 2010-1 | | | | | | | | |

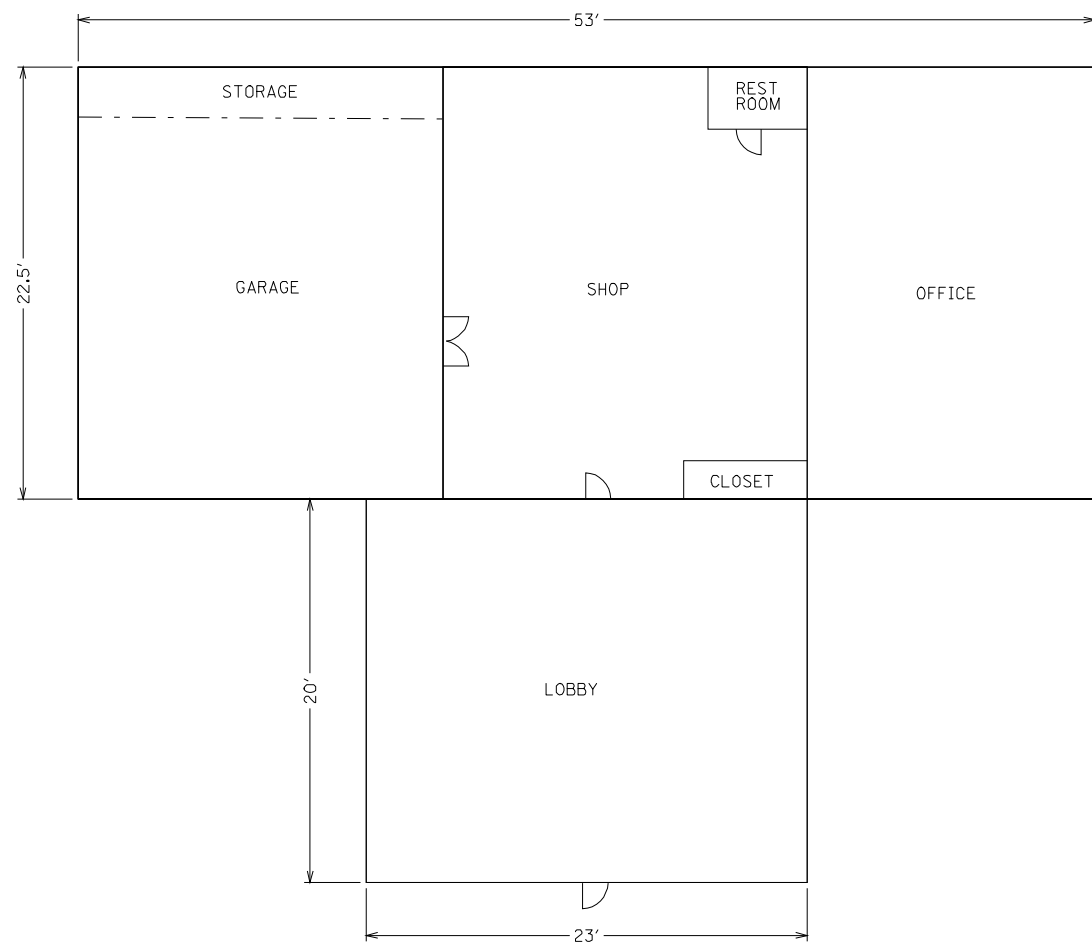
PARCEL NUMBER 6085112



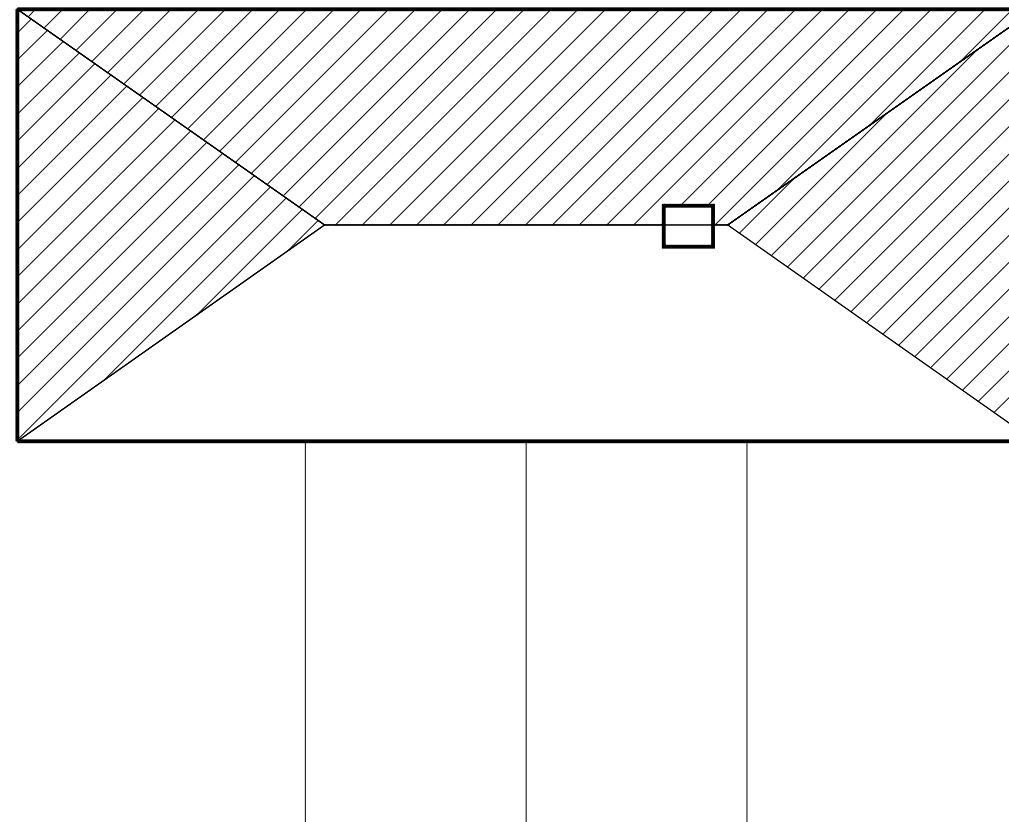
FOR INFORMATION ONLY

| | | | | | | | | | | | | | |
|--|------------------------|------------|-----------|---|--|-----------|-----------|------|-----------------------|--------------------|---------------------|-----------------------|--------------------|
| FILE NAME = e:\pwork\pwidot\LAUGHLINRL\0169063\0672030-shr-plan.dgn | USER NAME = laughlinr1 | DESIGNED - | REVISED - | STATE OF ILLINOIS DEPARTMENT OF TRANSPORTATION | PARCEL NUMBER 6085112 FUTURE FOUR LANE PLAN SHEET | | | | F.A.P. RTE. 322 | SECTION • | COUNTY CHRISTIAN | TOTAL SHEETS 19 | SHEET NO. 13 |
| PLOT SCALE = 40.0000' / IN. | CHECKED - | REVISED - | REVISED - | | SCALE: | SHEET NO. | OF SHEETS | STA. | TO STA. | CONTRACT NO. 72D30 | | | |
| PLOT DATE = Jan-27-2010 11:31:22AM | DATE - | REVISED - | REVISED - | | ILLINOIS FED. AID PROJECT | | | | | | | | |
| • D6 BUILDING DEMOLITION 2010-1 | | | | | | | | | | | | | |

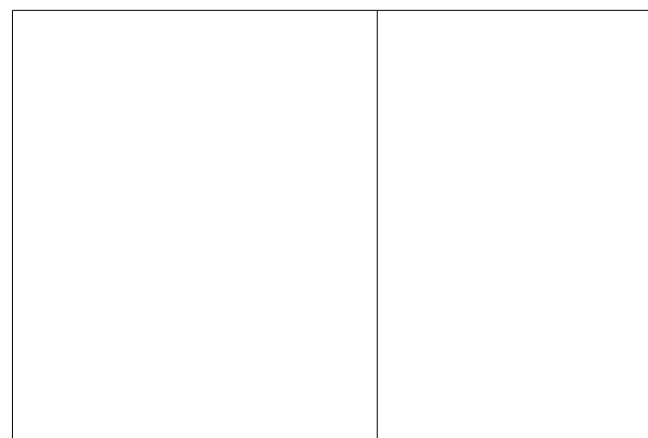
FIRST FLOOR PLAN



ROOF PLAN



LOFT PLAN



MAT. NO. ASBESTOS - CONTAINING MATERIAL

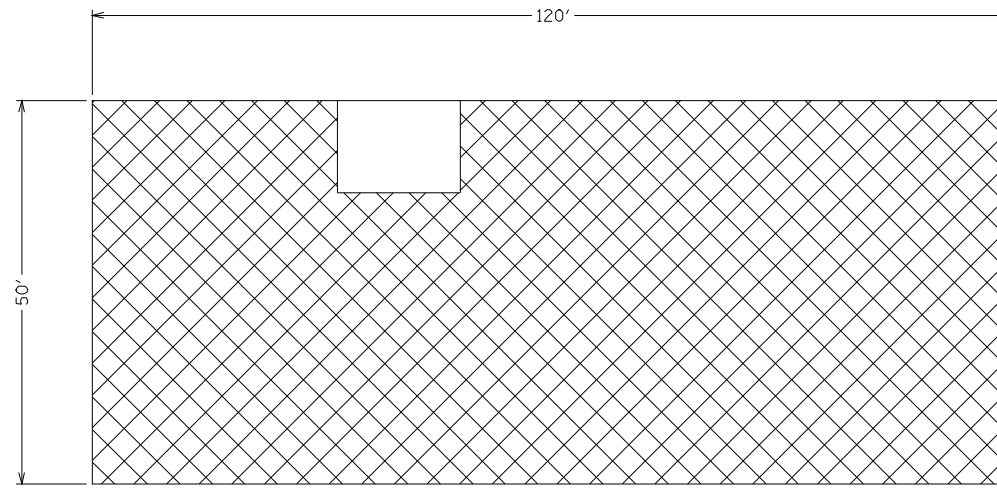
- ①  ASPHALT ROOFING SHINGLES
- ②  GRAY/BLACK SEALANT

DIMENSIONS ARE APPROXIMATE

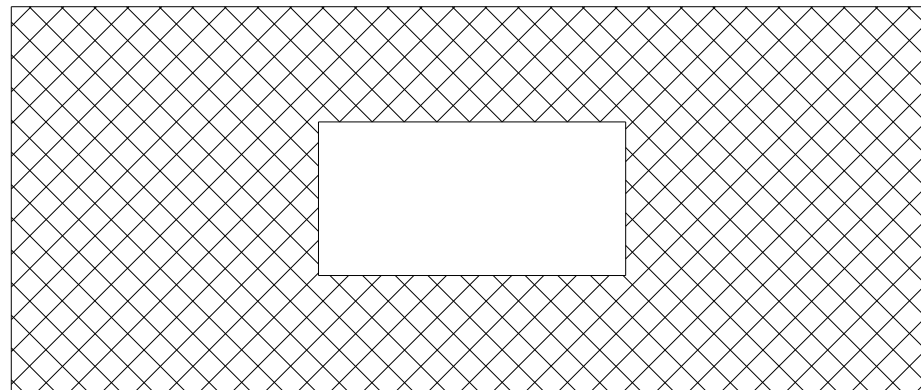


| | | | | | | | | | | | | | |
|---|------------------------|------------|-----------|---|---|-----------|-----------|------|---------------------------|---------|-----------|--------------|-----------|
| FILE NAME = | USER NAME = laughlinr1 | DESIGNED - | REVISED - | STATE OF ILLINOIS DEPARTMENT OF TRANSPORTATION | BUILDING DEMOLITION PARCEL NO. 6085200 | | | | F.A.P. RTE. | SECTION | COUNTY | TOTAL SHEETS | SHEET NO. |
| es:\pwork\pwork\LAUGHLINRL\0169063\0672030-shr-plan.dgn | | DRAWN - | REVISED - | | | | | | 322 | * | CHRISTIAN | 19 | 14 |
| PLOT SCALE = 10.0000 ' / IN. | | CHECKED - | REVISED - | | CONTRACT NO. 72D30 | | | | ILLINOIS FED. AID PROJECT | | | | |
| PLOT DATE = Jan-27-2010 11:31:26AM | | DATE - | REVISED - | | SCALE: | SHEET NO. | OF SHEETS | STA. | TO STA. | | | | |

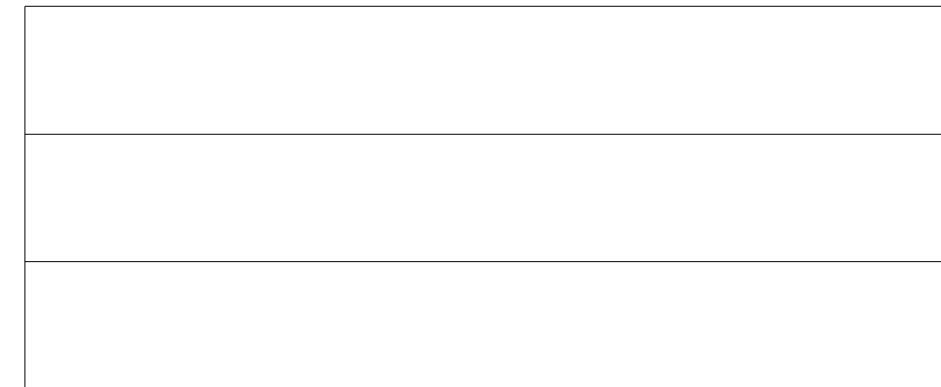
BUILDING 1 FIRST FLOOR PLAN



BUILDING 1 SECOND FLOOR PLAN



BUILDING 1 ROOF PLAN



MAT. NO. _____ ASBESTOS - CONTAINING MATERIAL

3



TAN VINYL SHEET FLOORING

DIMENSIONS ARE APPROXIMATE

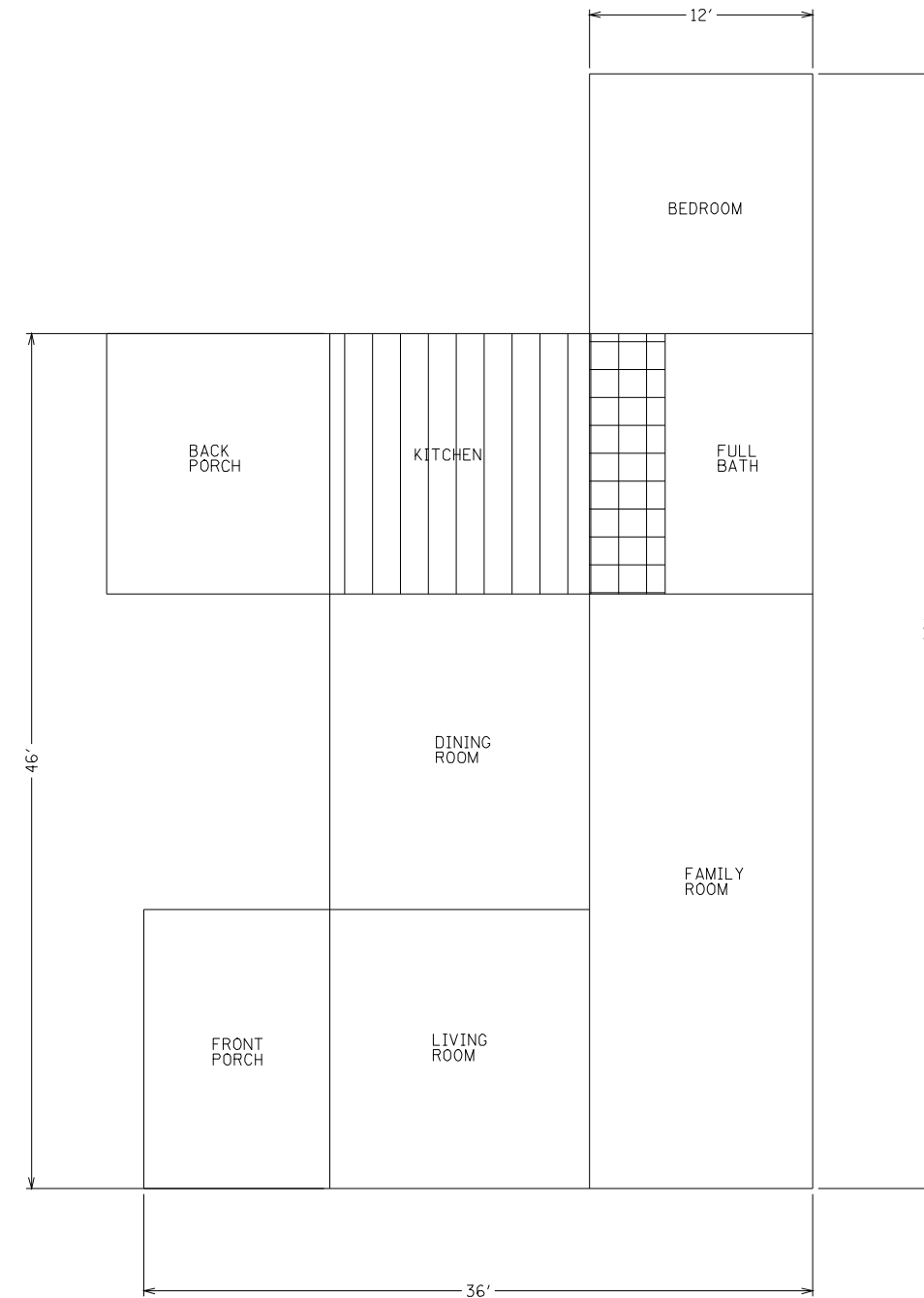


| | | | | | | | | | | | | | |
|---|------------------------|------------|-----------|---|---|-----------|--------------------|--------|----------------|-----------|---------------------------|-----------------|--------------|
| FILE NAME = e:\pwork\pwork\LAUGHLINRL\0169063\0672030-shr-plan.dgn | USER NAME = laughlinr1 | DESIGNED - | REVISED - | STATE OF ILLINOIS DEPARTMENT OF TRANSPORTATION | BUILDING DEMOLITION PARCEL NO. 6085109 | | | | F.A.P. RTE. | SECTION | COUNTY | TOTAL SHEETS | SHEET NO. |
| PLOT SCALE = 25.0000' / IN. | CHECKED - | REVISED - | 322 | | | | | | * | CHRISTIAN | 19 | 15 | |
| PLOT DATE = Jan-27-2010 11:31:30AM | DATE - | REVISED - | | | | | CONTRACT NO. 72D30 | | | | | | |
| | | | | | SCALE: | SHEET NO. | OF | SHEETS | STA. | TO STA. | ILLINOIS FED. AID PROJECT | | |

BASEMENT FLOOR PLAN

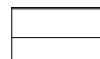


FIRST FLOOR PLAN



MAT. NO. ASBESTOS - CONTAINING MATERIAL

④



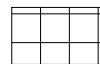
DUCT SEAM TAPE

⑤



TAN PATTERNED VINYL SHEET FLOORING

⑥



WHITE W/ GOLD VINYL SHEET FLOORING

DIMENSIONS ARE APPROXIMATE



| | | | |
|---|------------------------------------|------------|-----------|
| FILE NAME = | USER NAME = laughlinr1 | DESIGNED - | REVISED - |
| e:\pwork\pwidot\LAUGHLINRL\0169063\0672030-shr-plan.dgn | | DRAWN - | REVISED - |
| | PLOT SCALE = 10.0000 ' / IN. | CHECKED - | REVISED - |
| | PLOT DATE = Jan-27-2010 11:31:34AM | DATE - | REVISED - |

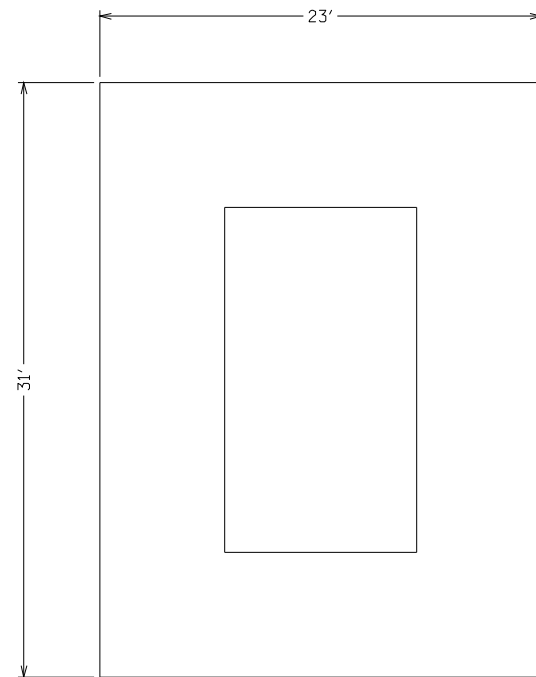
**STATE OF ILLINOIS
DEPARTMENT OF TRANSPORTATION**

**BUILDING DEMOLITION
PARCEL NO. 6085112**

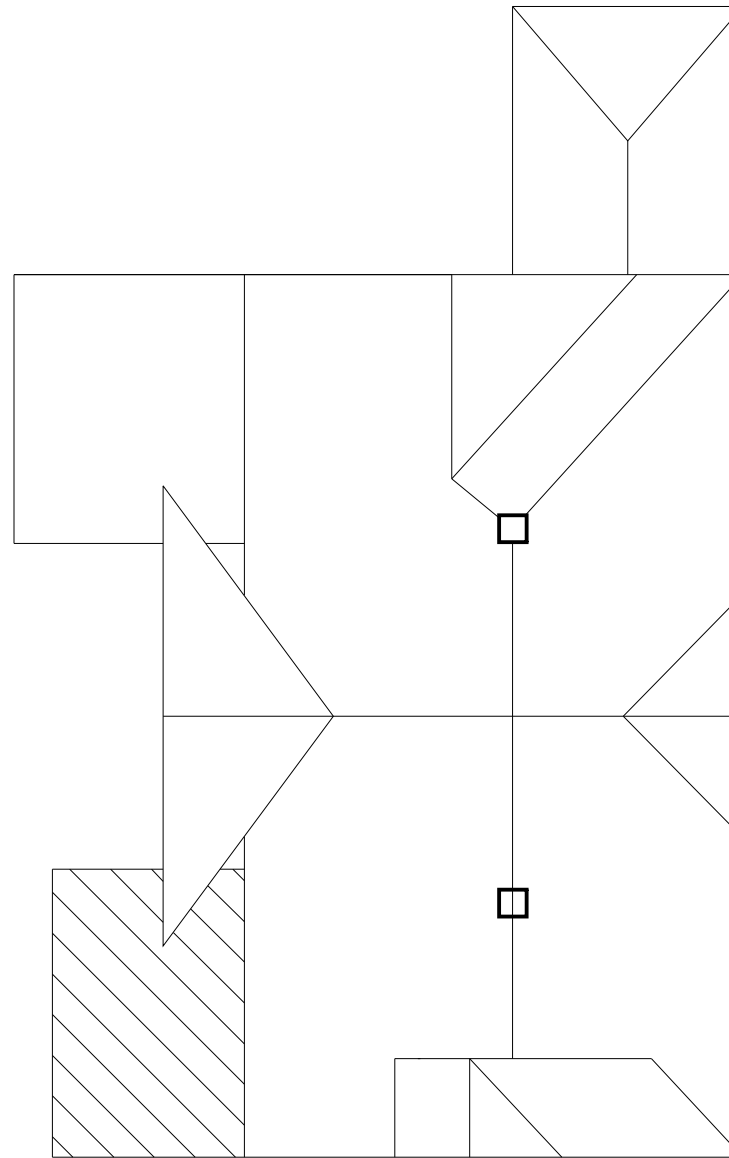
SCALE: SHEET NO. OF SHEETS STA. TO STA.

| F.A.P. RTE. | SECTION | COUNTY | TOTAL SHEETS | SHEET NO. |
|---------------------------|---------|-----------|--------------------|-----------|
| 322 | * | CHRISTIAN | 19 | 16 |
| ILLINOIS FED. AID PROJECT | | | CONTRACT NO. 72D30 | |

ATTIC FLOOR PLAN



HOUSE ROOF PLAN



MAT. NO. ASBESTOS - CONTAINING MATERIAL

7



ROLLED ASPHALT SHEETING

8



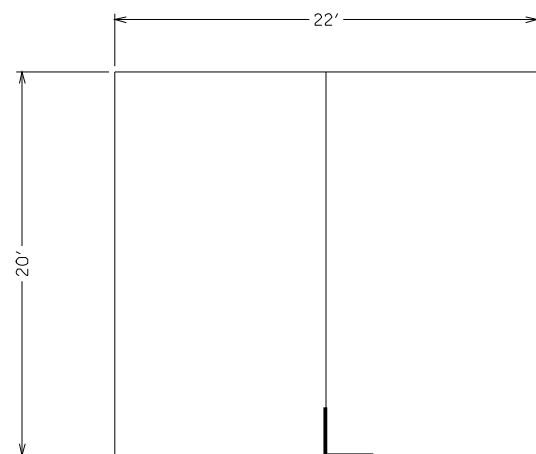
CHIMNEY & VENT FLASHING

DIMENSIONS ARE APPROXIMATE

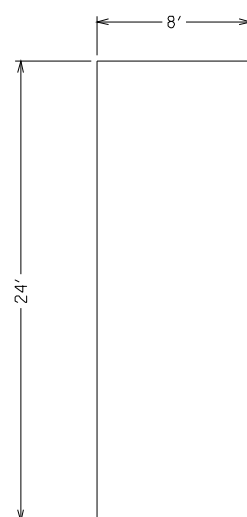


| | | | | | | | | | | |
|--|------------------------|------------|---------------------------|---|---|-------------|-----------|---------|--------------|-----------|
| FILE NAME = | USER NAME = laughlinr1 | DESIGNED - | REVISED - | STATE OF ILLINOIS DEPARTMENT OF TRANSPORTATION | BUILDING DEMOLITION PARCEL NO. 6085112 | F.A.P. RTE. | SECTION | COUNTY | TOTAL SHEETS | SHEET NO. |
| e:\pwwork\pwidot\LAUGHLINRL\0169063\0672D30-shr-plan.dgn | DRAWN - | REVISED - | 322 | | | * | CHRISTIAN | 19 | 17 | |
| PLOT SCALE = 10.0000 ' / IN. | CHECKED - | REVISED - | CONTRACT NO. 72D30 | | | | | | | |
| PLOT DATE = Jan-27-2010 11:31:37AM | DATE - | REVISED - | ILLINOIS FED. AID PROJECT | | | | | | | |
| | | | | SCALE: | SHEET NO. | OF SHEETS | STA. | TO STA. | | |

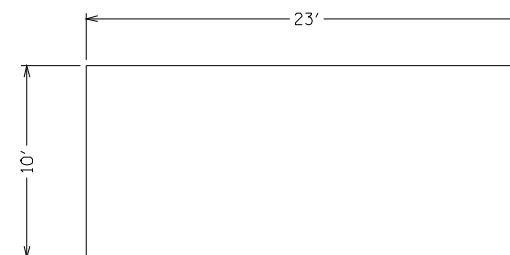
TWO CAR GARAGE ROOF



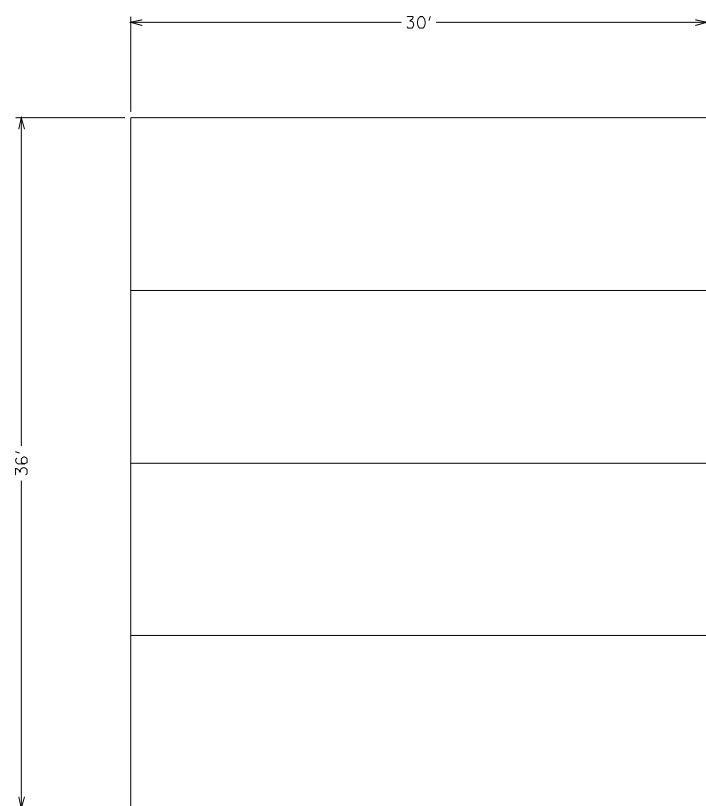
ANIMAL SHELTER



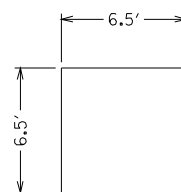
STORAGE SHED



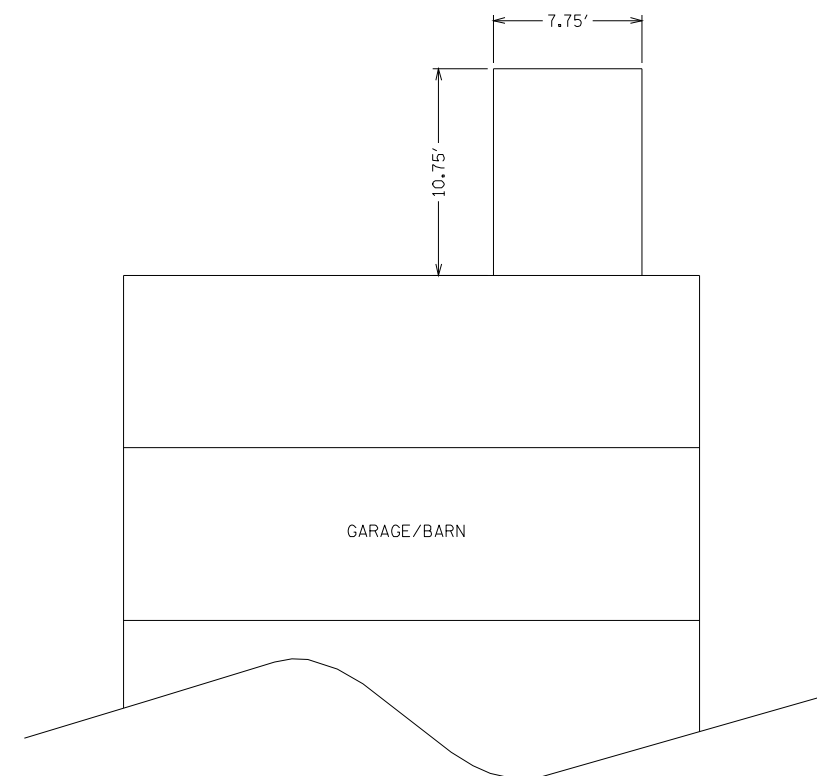
GARAGE/BARN ROOF



WELL PUMP HOUSE



STORAGE BOX



MAT. NO. ASBESTOS - CONTAINING MATERIAL

9



ROOF FLASHING

DIMENSIONS ARE APPROXIMATE



| | | | |
|---|------------------------------------|------------|-----------|
| FILE NAME = | USER NAME = laughlinr1 | DESIGNED - | REVISED - |
| e:\pwork\pwork\LAUGHLINRL\0169063\072D30-shr-plan.dgn | | DRAWN - | REVISED - |
| | PLOT SCALE = 10.0000 ' / IN. | CHECKED - | REVISED - |
| | PLOT DATE = Jan-27-2010 11:31:41AM | DATE - | REVISED - |

**STATE OF ILLINOIS
DEPARTMENT OF TRANSPORTATION**

**BUILDING DEMOLITION
PARCEL NO. 6085112**

SCALE: SHEET NO. OF SHEETS STA. TO STA.

| F.A.P. RTE. | SECTION | COUNTY | TOTAL SHEETS | SHEET NO. |
|--------------------|---------|-----------|---------------------------|-----------|
| 322 | * | CHRISTIAN | 19 | 18 |
| CONTRACT NO. 72D30 | | | ILLINOIS FED. AID PROJECT | |

ASBESTOS CONTAINING MATERIAL TO BE REMOVED

| MATERIAL NO. | MATERIAL DESCRIPTION | LOCATION | FRIABLE | ASBESTOS TYPE | ASBESTOS % | QUANTITY |
|----------------|--|---|---------|---------------|---------------------------|------------|
| PARCEL 6085200 | | | | | | |
| 1 | MULTI-LAYER ASPHALT ROOFING SHINGLES | UPPER ROOF | NO | CHRYSOTILE | ND/ND 10% BOTTOM LAYER | 1200 SQ FT |
| 2 | GRAY SEALANT | UPPER ROOF; TROUGH; CHIMNEY BASE | NO | CHRYSOTILE | 9% | 380 SQ FT |
| PARCEL 6085109 | | | | | | |
| 3 | TAN/WHITE TERRAZZO PATTERN VINYL SHEET FLOORING/MASTIC | BUILDING 1, AISLE WAYS ON FIRST AND SECOND FLOORS | NO | CHRYSOTILE | TILE 20% MASTIC ND | 1950 SQ FT |
| PARCEL 6085112 | | | | | | |
| 4 | WHITE DUCT SEAM TAPE | BASEMENT, DUCT CONNECTIONS AND PLENUMS | YES | CHRYSOTILE | 50% | 25 SQ FT |
| 5 | TAN WITH SQUARE PATTERN VINYL SHEET FLOORING | KITCHEN | NO | CHRYSOTILE | SHEETING 10% MASTIC ND | 196 SQ FT |
| 6 | WHITE WITH GOLD SPLOTCHES VINYL SHEET FLOORING | RESTROOM | NO | CHRYSOTILE | 10% | 45 SQ FT |
| 7 | MULTI-LAYER ASPHALT ROLLED SHEETING | FRONT PORCH ROOF | NO | CHRYSOTILE | 2% | 90 SQ FT |
| 8 | CHIMNEY AND VENT FLASHING | HOUSE ROOF | NO | CHRYSOTILE | 4% | 17 LF |
| 9 | ROOF FLASHING | GARAGE ROOF | NO | CHRYSOTILE | 7% | 1 LF |

| | | | | | | | | | | | | | |
|--|------------------------|------------|-----------|---|-----------------------|-----------|-----------|------|-------------|---------------------------|-----------|--------------|-----------|
| FILE NAME = | USER NAME = laughlinr1 | DESIGNED - | REVISED - | STATE OF ILLINOIS DEPARTMENT OF TRANSPORTATION | MATERIAL TABLE | | | | F.A.P. RTE. | SECTION | COUNTY | TOTAL SHEETS | SHEET NO. |
| es:\pwork\PWIDOT\LAUGHLINRL\0169063\0672030-shr-plan.dgn | DRAWN - | REVISED - | REVISED - | | | | | | 322 | * | CHRISTIAN | 19 | 19 |
| PLOT SCALE = 100.0000' / IN. | CHECKED - | REVISED - | REVISED - | | CONTRACT NO. 72D30 | | | | | | | | |
| PLOT DATE = Jan-27-2010 11:31:45AM | DATE - | REVISED - | REVISED - | | SCALE: | SHEET NO. | OF SHEETS | STA. | TO STA. | ILLINOIS FED. AID PROJECT | | | |