

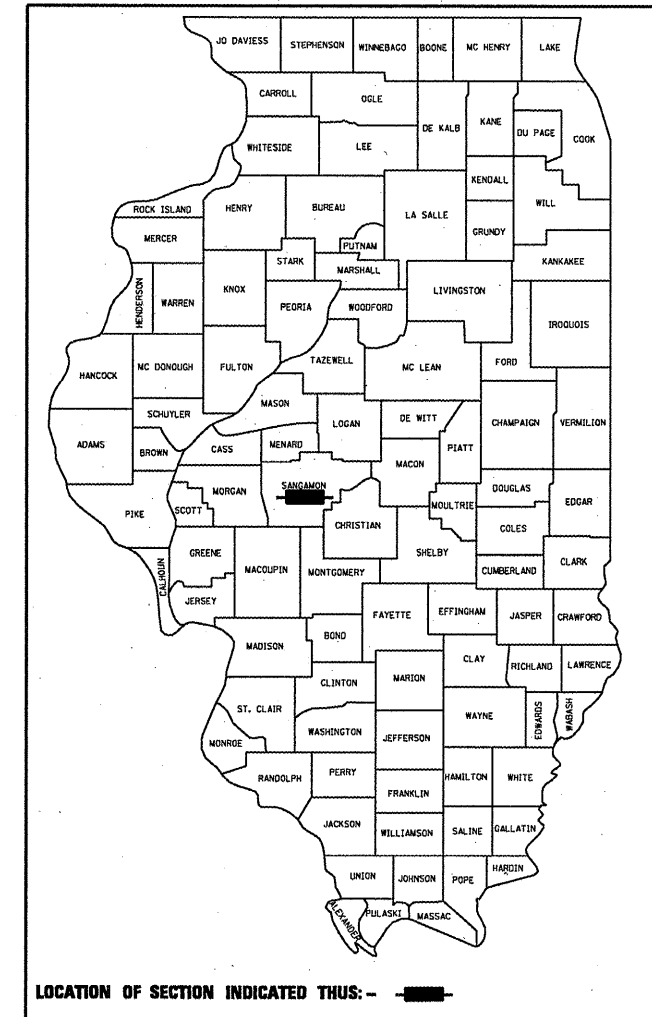
STATE OF ILLINOIS
DEPARTMENT OF TRANSPORTATION
DIVISION OF HIGHWAYS

**PROPOSED
HIGHWAY PLANS**

FAP ROUTE 666 (I-55 BUS/6TH ST.)
(ST. JOSEPH ST., STEVENSON DR., &
COUNTY MARKET ENTRANCE)
SECTION 110TS-4 & 15TS-5
PROJECT: ACHSIP-0666(019)
TRAFFIC SIGNAL MODERNIZATION
SANGAMON COUNTY

F.A.P. RTE.	SECTION	COUNTY	TOTAL SHEETS	SHEET NO.
666	110TS-4 & 15TS-5	SANGAMON	20	1
		ILLINOIS	CONTRACT NO. 72D36	

D-96-164-10

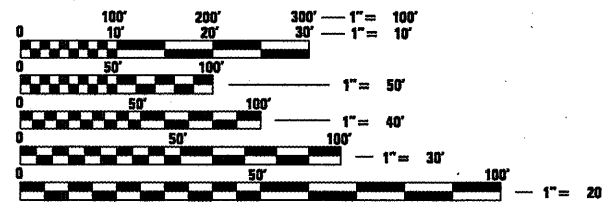
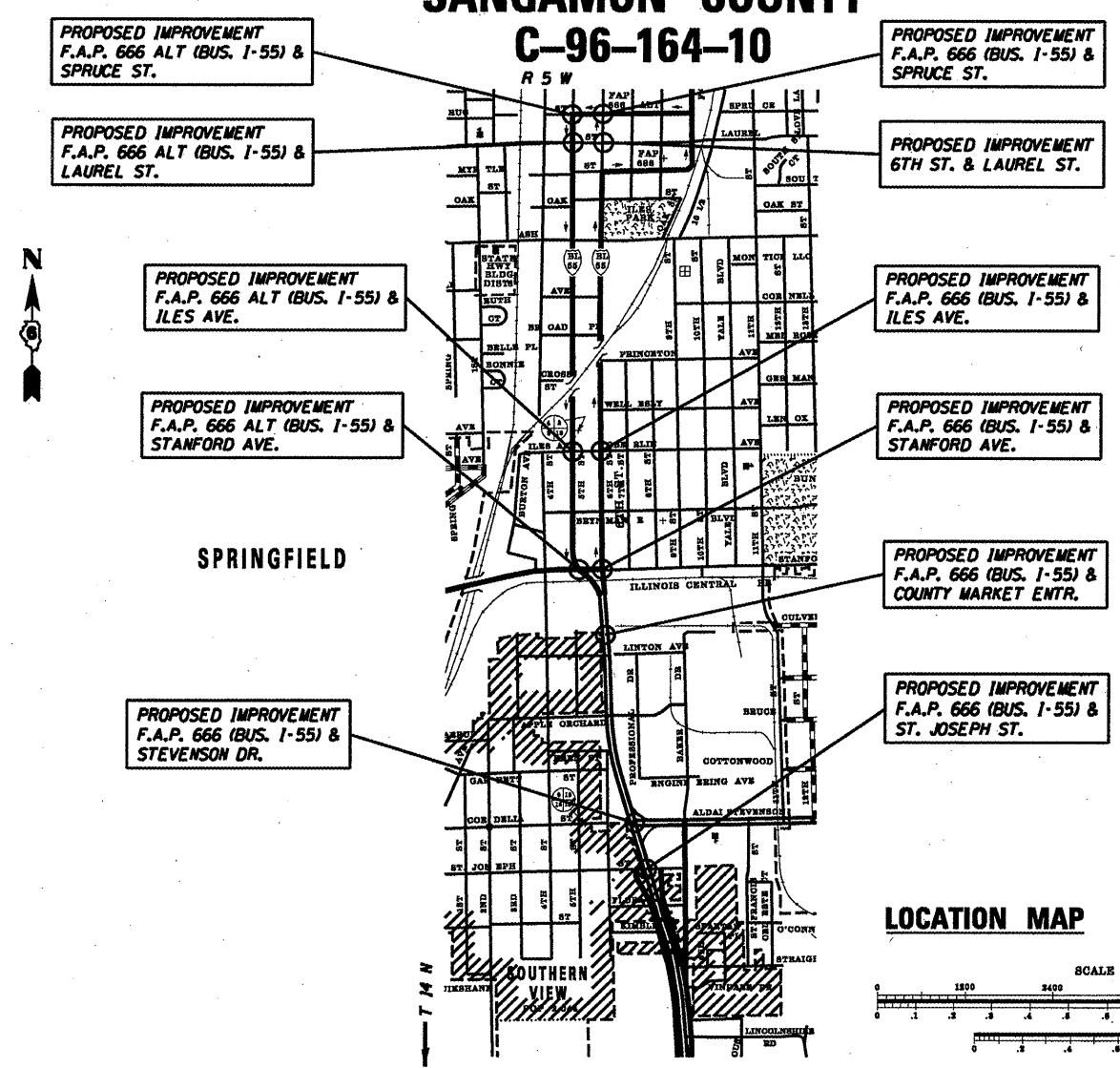


FOR INDEX OF SHEETS, SEE SHEET NO. 2

HIGHWAY CLASSIFICATION

F.A.P. ROUTE 666 (I-55 BUS/6TH ST.)

CLASSIFICATION: OTHER PRINCIPAL ARTERIAL
ADT: 32,267 (2007) PV = 96.1%
ADT: 40,565 (2030) SU = 2.4%
DESIGN SPEED: 45 MPH & 30 MPH MU = 1.5%
POSTED SPEED: 45 MPH & 30 MPH



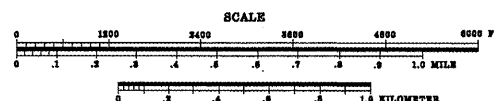
FULL SIZE PLANS HAVE BEEN PREPARED USING STANDARD ENGINEERING SCALES. REDUCED SIZED PLANS WILL NOT CONFORM TO STANDARD SCALES. IN MAKING MEASUREMENTS ON REDUCED PLANS, THE ABOVE SCALES MAY BE USED.

J.U.L.I.E.
JOINT UTILITY LOCATION INFORMATION FOR EXCAVATION
1-800-892-0123
OR 811

PROJECT ENGINEER: SAL MADONIA (217) 782-4761
PROJECT MANAGER: RENE CABRERA (217) 557-9062

CONTRACT NO. 72D36

LOCATION MAP



STATE OF ILLINOIS
DEPARTMENT OF TRANSPORTATION
DIVISION OF HIGHWAYS

SUBMITTED February 4 2013
Ryan Zambelli
DEPUTY DIRECTOR OF HIGHWAYS, REGION ENGINEER

March 19 2010
Scott E. Stitt, P.E., B.S.
ACTING ENGINEER OF DESIGN AND ENVIRONMENT

March 19 2010
Christine M. Reed, Esq.
DIRECTOR OF HIGHWAYS, CHIEF ENGINEER

**PRINTED BY THE AUTHORITY
OF THE STATE OF ILLINOIS**

INDEX OF SHEETS

GENERAL NOTES

- ① WHERE SECTION OR SUBSECTION MONUMENTS ARE ENCOUNTERED, THE ENGINEER SHALL BE NOTIFIED BEFORE SUCH MONUMENTS ARE REMOVED. THE CONTRACTOR SHALL PROTECT AND CAREFULLY PRESERVE ALL PROPERTY MARKS, MONUMENTS, AND PERMANENT SURVEY MARKERS UNTIL THE OWNER, AND AUTHORIZED SURVEYOR OR AGENT HAS WITNESSES OR OTHERWISE REFERENCED THEIR LOCATION.
- ② ANY REFERENCE TO A STANDARD IN THE PLANS SHALL BE INTERPRETED TO MEAN THE EDITION, AS INDICATED BY THE SUB-NUMBER LISTED IN THE INDEX OF SHEETS, OR THE COPY OF THE STANDARD INCLUDED IN THE PLANS.

INDEX OF SHEETS

- 1 COVER SHEET
- 2 INDEX OF SHEETS
- 3 - 4 SUMMARY OF QUANTITIES
- 5 TRAFFIC SIGNAL LEGEND
- 6 - 7 TRAFFIC SIGNALS 5TH & 6TH STREETS
- 8 - 19 TRAFFIC SIGNAL & CABLE PLANS
- 20 SIGNING DETAILS

STANDARDS

- 000001-05 STANDARD SYMBOLS, ABBREVIATIONS, AND PATTERNS
- 701101-02 OFF-ROAD OPERATIONS, MULTILANE, 4.5 M (15') TO 600 MM (24") FROM PAVEMENT EDGE
- 701601-06 URBAN LANE CLOSURE, MULTILANE, 1W OR 2W WITH NONTRANSVERSABLE MEDIAN
- 701606-06 URBAN LANE CLOSURE, MULTILANE, 2W WITH MOUNTABLE MEDIAN
- 701701-06 URBAN LANE CLOSURE, MULTILANE INTERSECTION
- 701801-04 LANE CLOSURE, MULTILANE 1W OR 2W CROSSWALK OR SIDEWALK CLOSURE
- 701901-01 TRAFFIC CONTROL DEVICES
- 720016-02 MAST ARM MOUNTED STEEL NAME SIGNS
- 814001-02 HANDHOLES
- 877001-04 STEEL MAST ARM ASSEMBLY AND POLE 16' THROUGH 55'
- 878001-08 CONCRETE FOUNDATION DETAILS
- 880006-01 TRAFFIC SIGNAL MOUNTING DETAILS

RATES OF APPLICATION TABLES

(NONE)

COMMITMENTS

(NONE)

DISTRICT SIX	
EXAMINED	January 12 20 10
<i>[Signature]</i>	
OPERATIONS ENGINEER	
EXAMINED	January 12 20 10
<i>[Signature]</i>	
PROGRAM IMPLEMENTATION ENGINEER	
EXAMINED	February 4 20 10
<i>[Signature]</i>	
PROGRAM DEVELOPMENT ENGINEER	

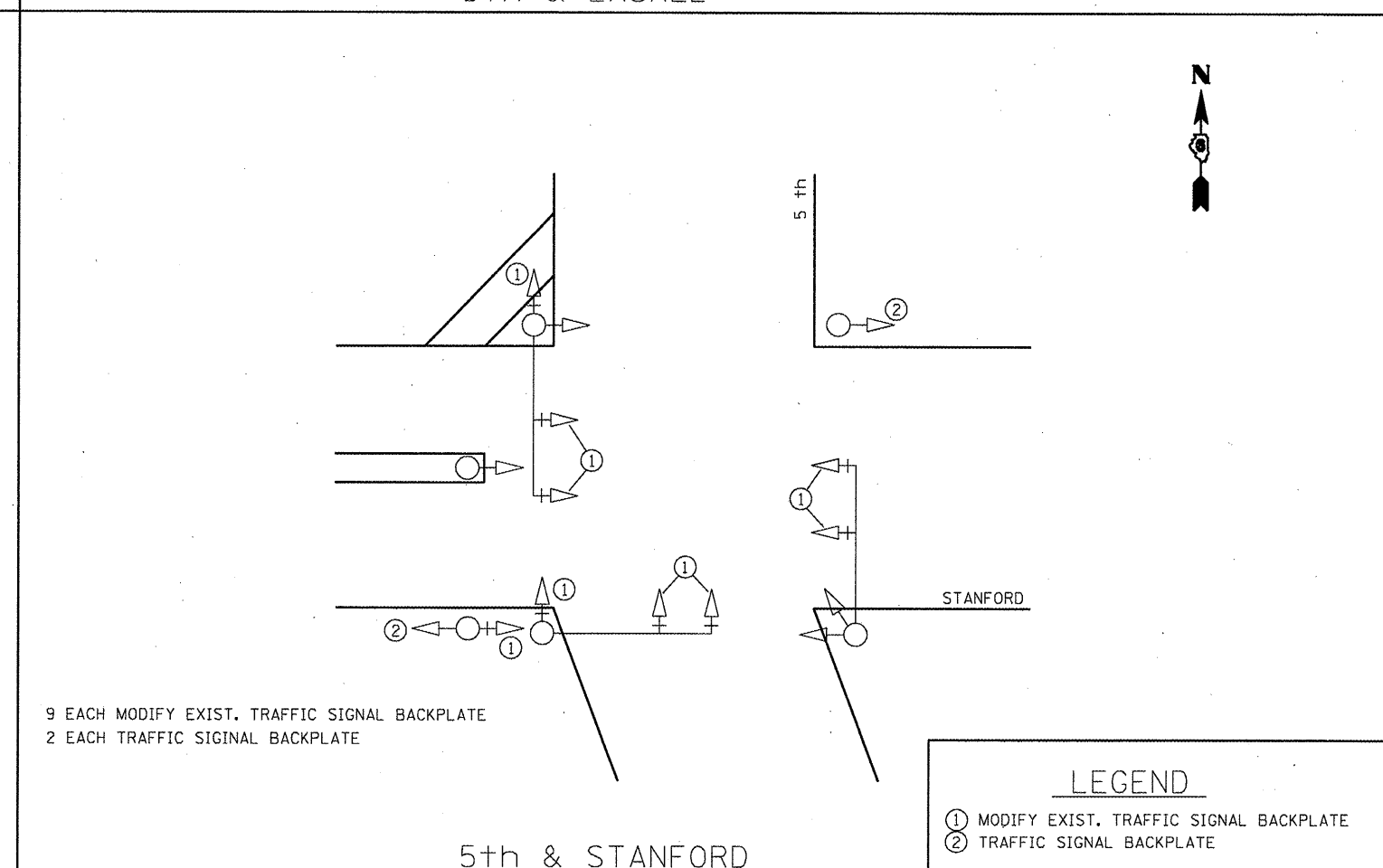
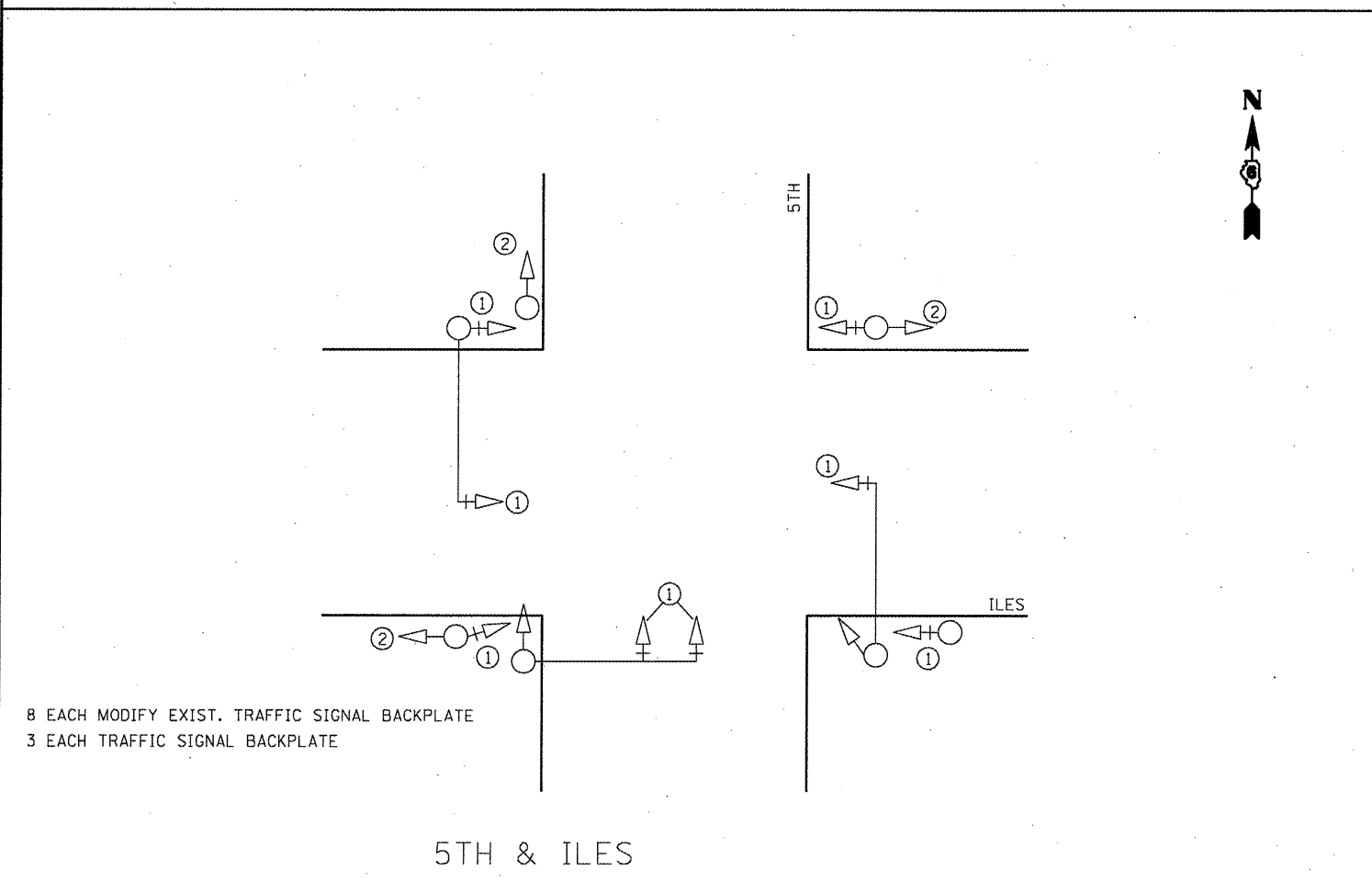
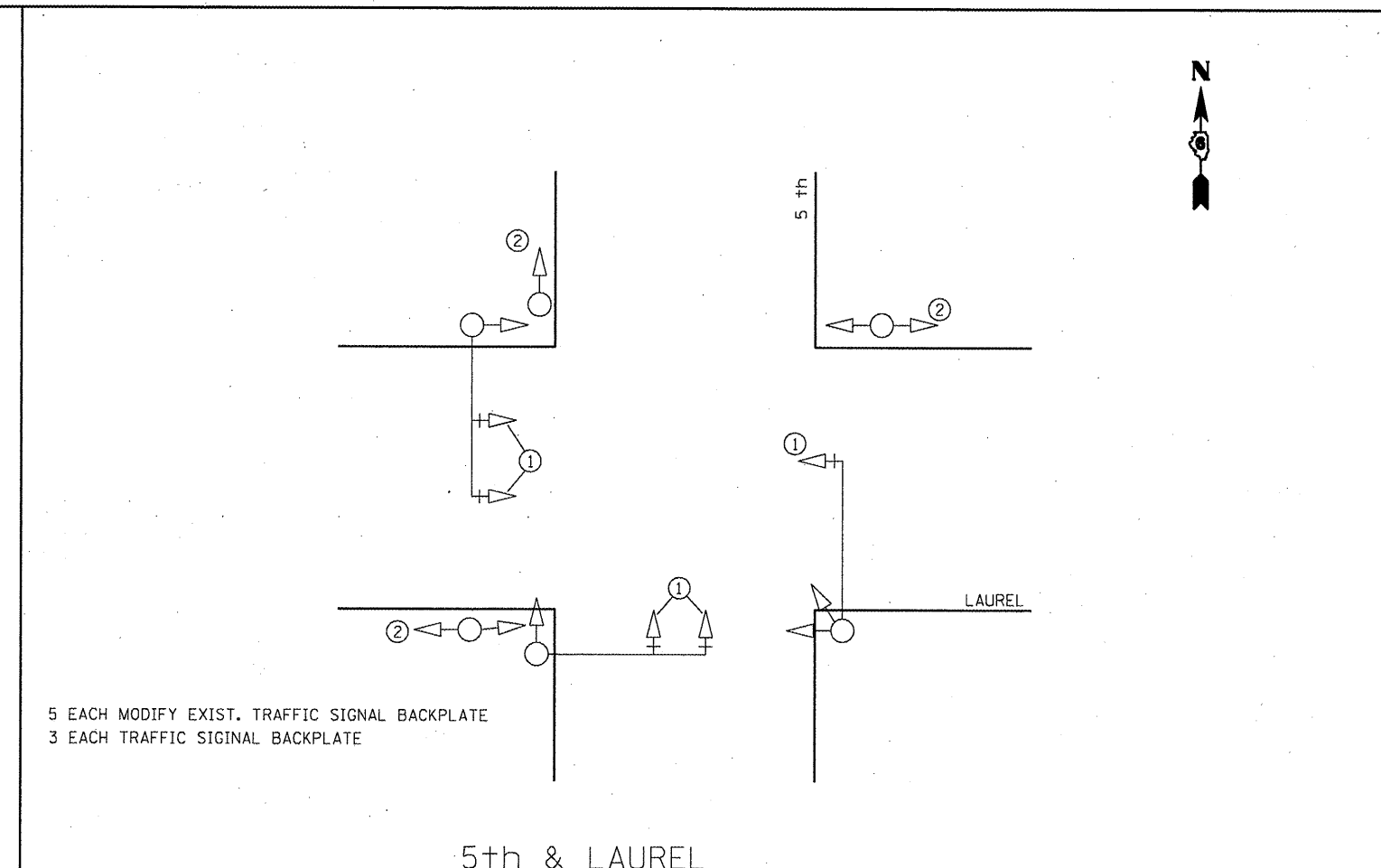
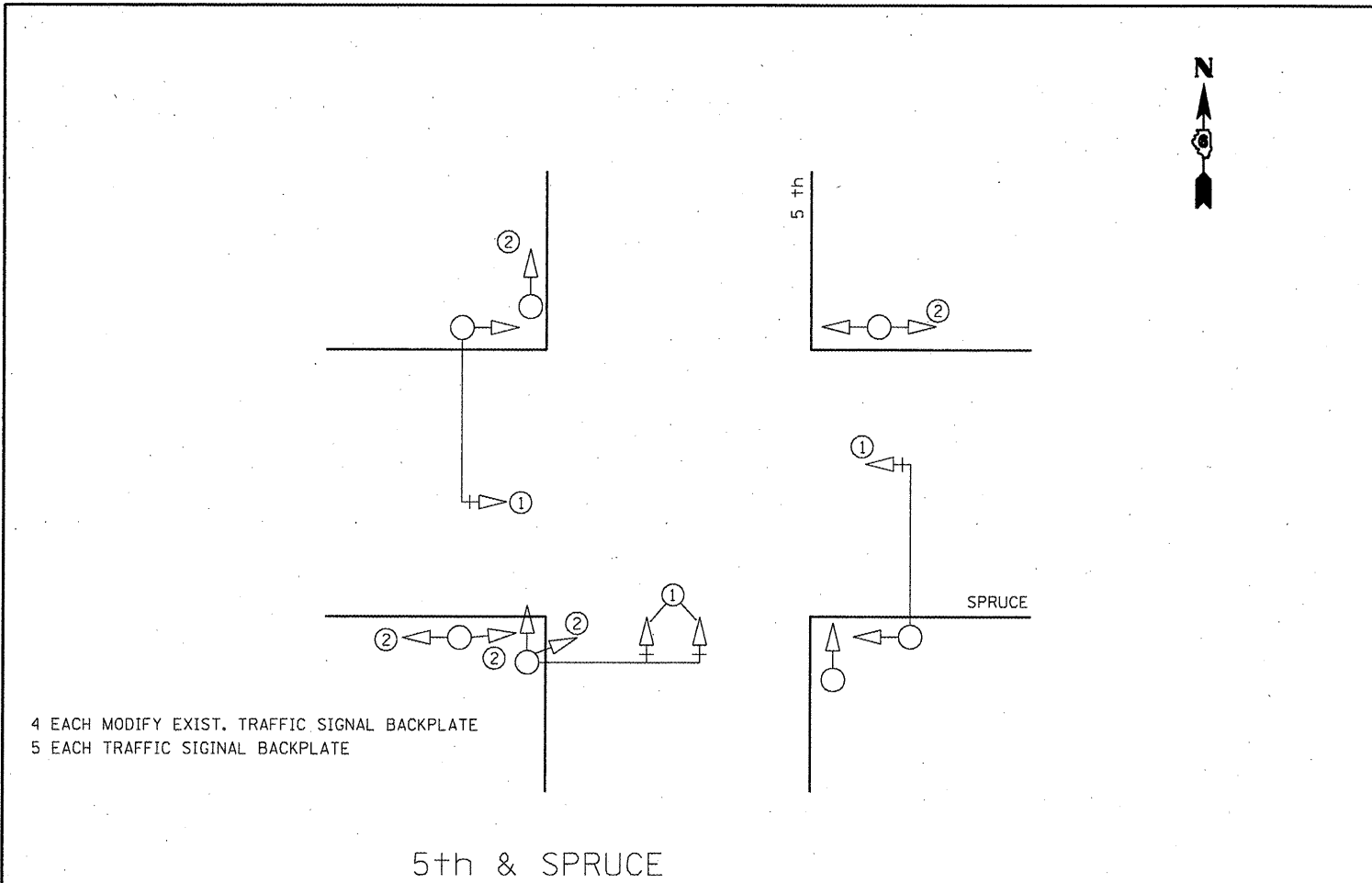
				90% FEDERAL 5% STATE 5% CITY SPFLD	90% FEDERAL 10% STATE	90% FEDERAL 10% STATE	90% FEDERAL 10% STATE	90% FEDERAL 10% STATE	90% FEDERAL 10% STATE	90% FEDERAL 10% STATE	90% FEDERAL 10% STATE	90% FEDERAL 10% STATE	90% FEDERAL 10% STATE	90% FEDERAL 10% STATE
				6TH & COUNTY MARKET ENTR.	6TH & STEVENSON DR.	6TH & ST. JOSEPH ST.	5TH & SPRUCE ST.	5TH & LAUREL AVE.	5TH & ILES AVE.	5TH & STANFORD AVE.	6TH & SPRUCE ST.	6TH & LAUREL AVE.	6TH & ILES AVE.	6TH & STANFORD AVE.
URBAN				CONSTRUCTION TYPE CODE										
SUMMARY OF QUANTITIES				Y031-1F	Y031-1F	Y031-1F	Y031-1F	Y031-1F	Y031-1F	Y031-1F	Y031-1F	Y031-1F	Y031-1F	Y031-1F
CODE NO.	ITEM	UNIT	TOT. QUAN.	Y031-1F	Y031-1F	Y031-1F	Y031-1F	Y031-1F	Y031-1F	Y031-1F	Y031-1F	Y031-1F	Y031-1F	Y031-1F
X0325469	MODIFY EXISTING TRAFFIC SIGNAL BACKPLATE	EACH	52				4	5	8	9	4	6	9	7
67100100	MOBILIZATION	L SUM	1	0.3	0.4	0.3								
70103700	TRAFFIC CONTROL COMPLETE	L SUM	1	0.3	0.4	0.3								
72000100	SIGN PANEL, TYPE 1	SQ FT	17.50	17.50										
72000200	SIGN PANEL, TYPE 2	SQ FT	41.25		27.50	13.75								
81012500	CONDUIT IN TRENCH, 1 1/2" DIA., PVC	FOOT	15		15									
81012600	CONDUIT IN TRENCH, 2" DIA., PVC	FOOT	59	37	15	7								
81400100	HANDHOLE	EACH	1	1										
81900200	TRENCH AND BACKFILL FOR ELECTRICAL WORK	FOOT	59	37	15	7								
87301245	ELECTRIC CABLE IN CONDUIT, SIGNAL NO. 14 5C	FOOT	2,048	1,194	440	414								
87301255	ELECTRIC CABLE IN CONDUIT, SIGNAL NO. 14 7C	FOOT	841	485	356									
87301265	ELECTRIC CABLE IN CONDUIT, SIGNAL NO. 14 9C	FOOT	430	430										
87301275	ELECTRIC CABLE IN CONDUIT, SIGNAL NO. 14 12C	FOOT	532	167		365								
87502700	TRAFFIC SIGNAL POST, ALUMINUM 16 FT.	EACH	1	1										
87700120	STEEL MAST ARM ASSEMBLY AND POLE, 16 FT	EACH	1	1										
87700160	STEEL MAST ARM ASSEMBLY AND POLE, 24 FT	EACH	1	1										
87700190	STEEL MAST ARM ASSEMBLY AND POLE, 30 FT	EACH	1		1									
87700240	STEEL MAST ARM ASSEMBLY AND POLE, 40 FT	EACH	1		1									
87700250	STEEL MAST ARM ASSEMBLY AND POLE, 42 FT	EACH	1			1								
87700300	STEEL MAST ARM ASSEMBLY AND POLE, 52 FT	EACH	1	1										
87700320	STEEL MAST ARM ASSEMBLY AND POLE, 55 FT	EACH	1	1										
87800100	CONCRETE FOUNDATION, TYPE A	FOOT	3	3										
87800400	CONCRETE FOUNDATION, TYPE E 30-INCH DIAMETER	FOOT	20	20										
87800415	CONCRETE FOUNDATION, TYPE E 36-INCH DIAMETER	FOOT	67	30	24	13								
87900200	DRILL EXISTING HANDHOLE	EACH	1	1										
88040070	SIGNAL HEAD, POLYCARBONATE, LED, 1-FACE, 3-SECTION, BRACKET MOUNTED	EACH	1	1										
88040090	SIGNAL HEAD, POLYCARBONATE, LED, 1-FACE, 3-SECTION, MAST ARM MOUNTED	EACH	14	6	5	3								
88040120	SIGNAL HEAD POLYCARBONATE, LED, 1-FACE, 4-SECTION, MAST ARM MOUNTED	EACH	2	2										
88040150	SIGNAL HEAD, POLYCARBONATE, LED, 1-FACE, 5 SECTION, BRACKET MOUNTED	EACH	1	1										

PLAN SHEET SYMBOLS

EXISTING	PROPOSED	
		SIGNAL HEAD
		SIGNAL HEAD WITH BACKPLATE
		TEMPORARY SIGNAL HEAD
		PEDESTRIAN SIGNAL HEAD
		PEDESTRIAN PUSHBUTTON DETECTOR
		DETECTOR LOOP
		QUADRAPOLE DETECTOR LOOP
		SIGNAL POST
		ALUMINUM MAST ARM ASSEMBLY AND POLE
		STEEL MAST ARM ASSEMBLY AND POLE
		WOOD POLE
		WOOD POLE WITH GUY
		SERVICE INSTALLATION
		CONTROLLER
		HANDHOLE
		HEAVY DUTY HANDHOLE
		DOUBLE HANDHOLE
		JUNCTION BOX
		GULFBOX JUNCTION
		AERIAL CABLE
		CONDUIT
		LENGTH - CONSTRUCTION (T=TRENCH P=PUSHED A=AUGERED E=EXISTING) SIZE - TYPE (S=STEEL P=PVC)
		CONDUIT SPLICE
		SPAN WIRE/TETHER WIRE
		56 ——— SIDEWALK REMOVAL IN SQ. FT.
		40 ——— PCC SIDEWALK, 4 INCH IN SQ. FT.
		32 ——— PCC SIDEWALK, 4 INCH (SPECIAL) IN SQ. FT.

CABLE PLAN SYMBOLS

EXISTING	PROPOSED	
		8" SIGNAL SECTION
		12" SIGNAL SECTION
		DIRECTIONAL SIGNAL SECTION
		9" PEDESTRIAN SIGNAL FACE
		12" PEDESTRIAN SIGNAL FACE
		SIGNAL FACE WITH BACKPLATE
		PROGRAMMED SIGNAL SECTION
		SIGNAL SECTION WITH LOUVRE
		DUAL-INDICATION SIGNAL SECTION
		INDUCTION DETECTOR LOOP
		QUADRAPOLE DETECTOR LOOP
		DIRECT-CONNECTED LOOP LEAD-IN (TWISTED)
		ELECTRIC CABLE DENOTING NUMBER OF CONDUCTORS
		ELECTRIC CABLE TO BE REMOVED
		ELECTRIC CABLE IDENTIFIER TAPE CODES (R=RED W=WHITE Y=YELLOW G=GREEN B=BLUE O=ORANGE)
		PEDESTRIAN PUSHBUTTON DETECTOR
		VIDEO CAMERA
		STEEL TWIN TENON



LEGEND

① MODIFY EXIST. TRAFFIC SIGNAL BACKPLATE
② TRAFFIC SIGNAL BACKPLATE

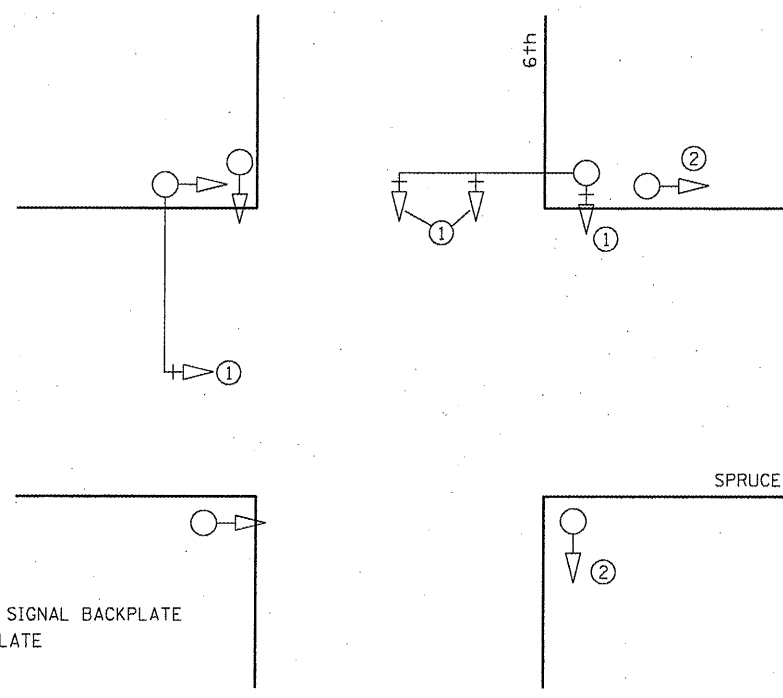
FILE NAME =	USER NAME = cabrerars	DESIGNED -	REVISED -
c:\pwwork\pwwid\cabrerars\0169424\072036-TS.dgn		DRAWN -	REVISED -
		CHECKED -	REVISED -
		DATE -	REVISED -

**STATE OF ILLINOIS
DEPARTMENT OF TRANSPORTATION**

TRAFFIC SIGNAL DETAILS

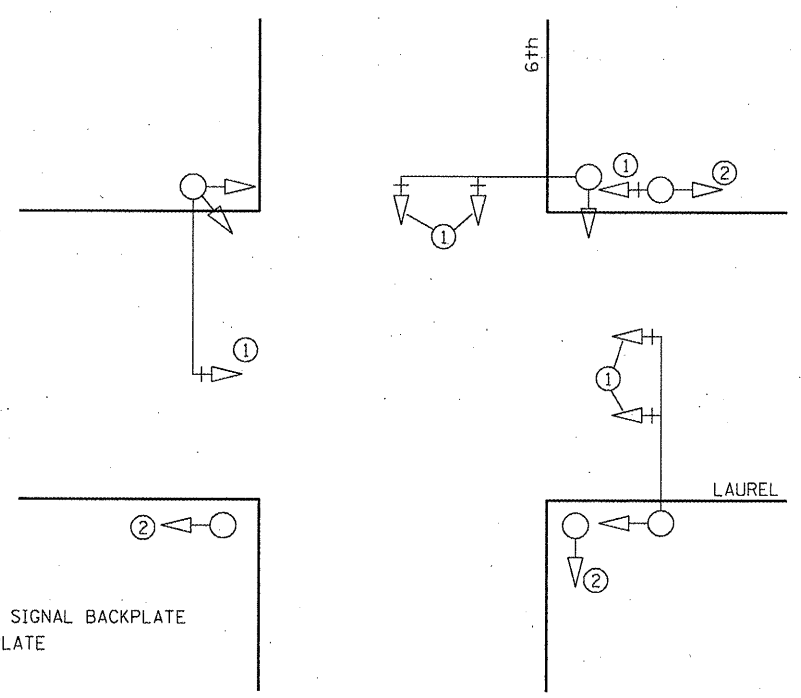
SCALE: SHEET NO. 1 OF 2 SHEETS STA. TO STA.

F.A.P. RTE.	SECTION	COUNTY	TOTAL SHEETS	SHEET NO.
666	110TS-4 & 15TS-5	SANGAMON	20	6
CONTRACT NO. 72D36				
FED. ROAD DIST. NO. ILLINOIS FED. AID PROJECT				



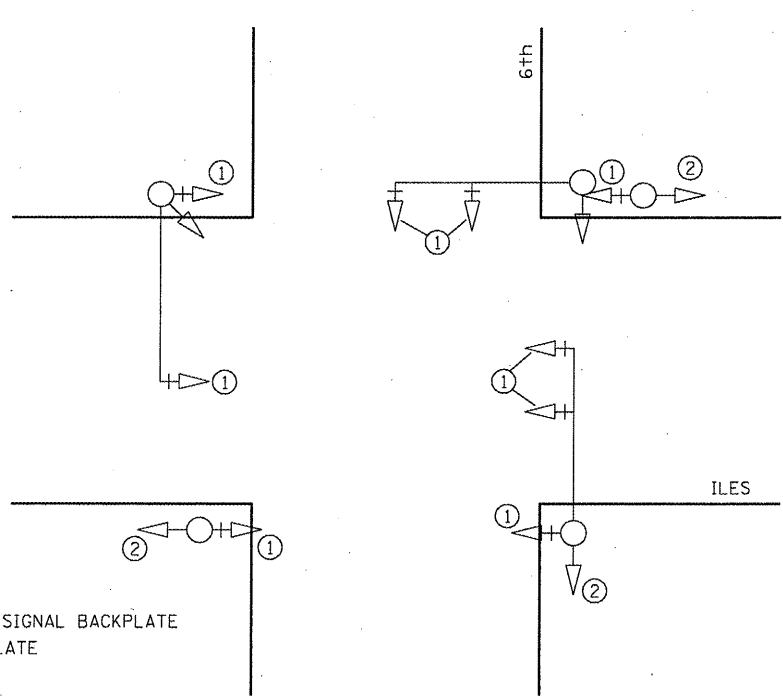
4 EACH MODIFY EXIST. TRAFFIC SIGNAL BACKPLATE
2 EACH TRAFFIC SIGNAL BACKPLATE

6th & SPRUCE



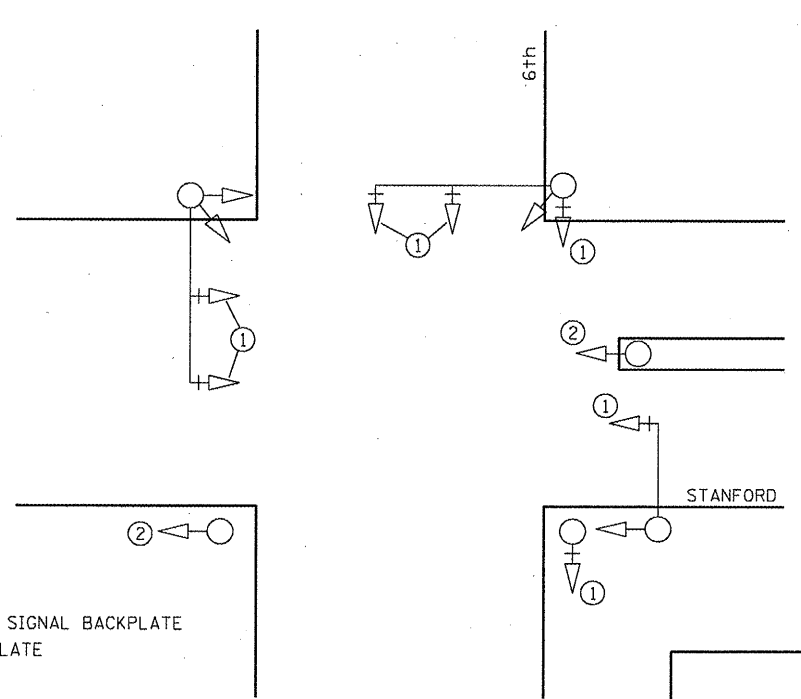
6 EACH MODIFY EXIST. TRAFFIC SIGNAL BACKPLATE
3 EACH TRAFFIC SIGNAL BACKPLATE

6th & LAUREL



9 EACH MODIFY EXIST. TRAFFIC SIGNAL BACKPLATE
3 EACH TRAFFIC SIGNAL BACKPLATE

6th & ILES



7 EACH MODIFY EXIST. TRAFFIC SIGNAL BACKPLATE
2 EACH TRAFFIC SIGNAL BACKPLATE

6th & STANFORD

LEGEND

① MODIFY EXIST. TRAFFIC SIGNAL BACKPLATE
② TRAFFIC SIGNAL BACKPLATE

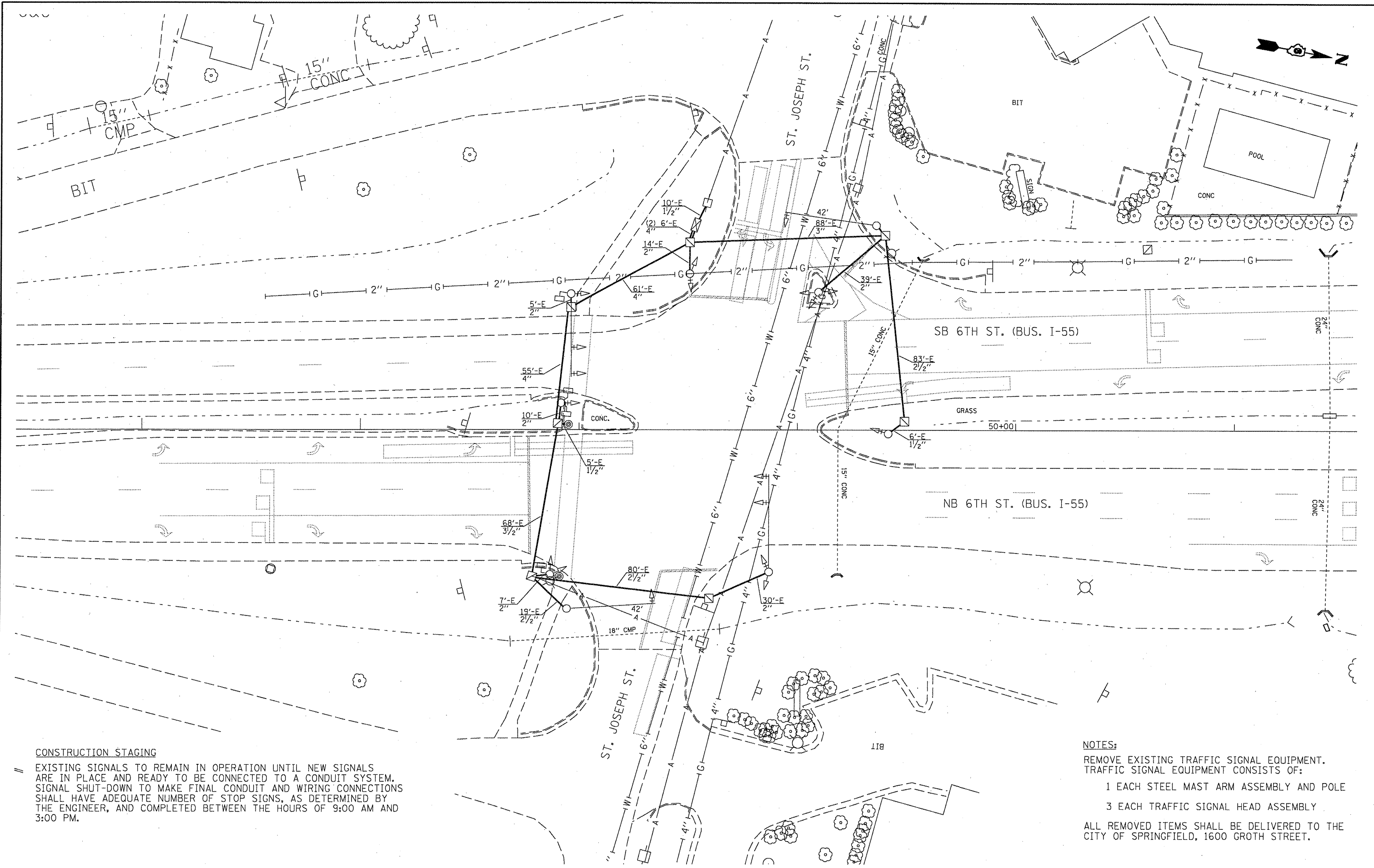
FILE NAME =	USER NAME = cbrerars	DESIGNED -	REVISED -
ct\pwwork\PWIDOT\CABRERARS\0169424\072036-TS.dgn	72036-TS.dgn	DRAWN -	REVISED -
	PLOT SCALE = 40.0000' / 1"	CHECKED -	REVISED -
	PLOT DATE = Feb-03-2010 07:45:54AM	DATE -	REVISED -

**STATE OF ILLINOIS
DEPARTMENT OF TRANSPORTATION**

TRAFFIC SIGNAL DETAILS

SCALE:	SHEET NO. 2 OF 2 SHEETS	STA.	TO STA.
--------	-------------------------	------	---------

F.A.P. RTE.	SECTION	COUNTY	TOTAL SHEETS	SHEET NO.
666	110TS-4 & 15TS-5	SANGAMON	20	7
FED. ROAD DIST. NO. [ILLINOIS] FED. AID PROJECT			CONTRACT NO. 72D36	



CONSTRUCTION STAGING

EXISTING SIGNALS TO REMAIN IN OPERATION UNTIL NEW SIGNALS ARE IN PLACE AND READY TO BE CONNECTED TO A CONDUIT SYSTEM. SIGNAL SHUT-DOWN TO MAKE FINAL CONDUIT AND WIRING CONNECTIONS SHALL HAVE ADEQUATE NUMBER OF STOP SIGNS, AS DETERMINED BY THE ENGINEER, AND COMPLETED BETWEEN THE HOURS OF 9:00 AM AND 3:00 PM.

NOTES:

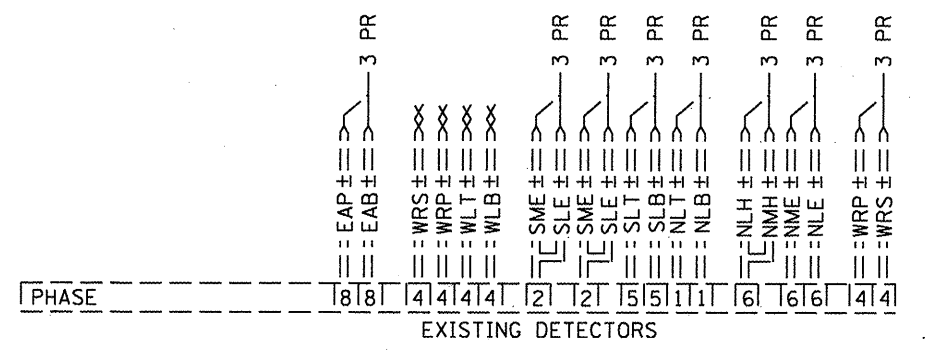
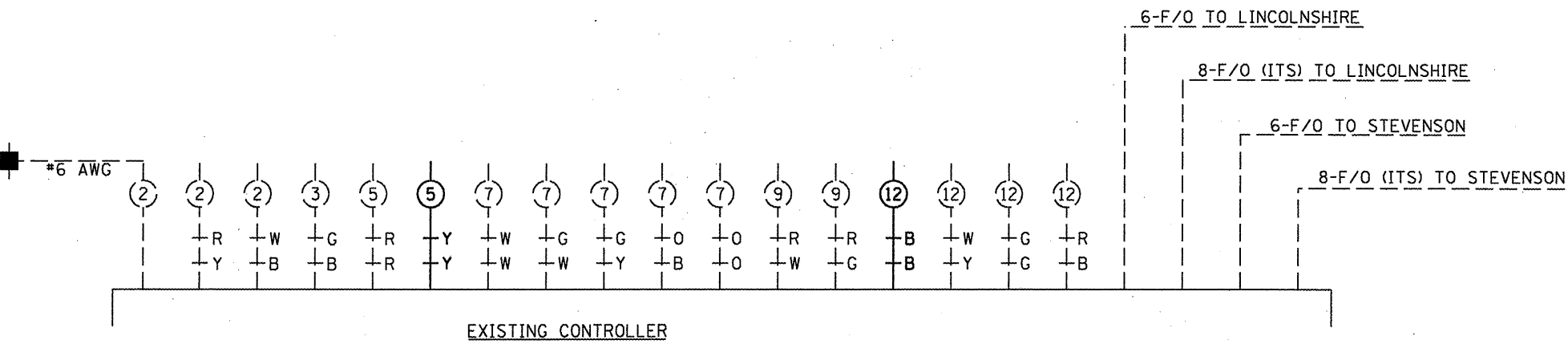
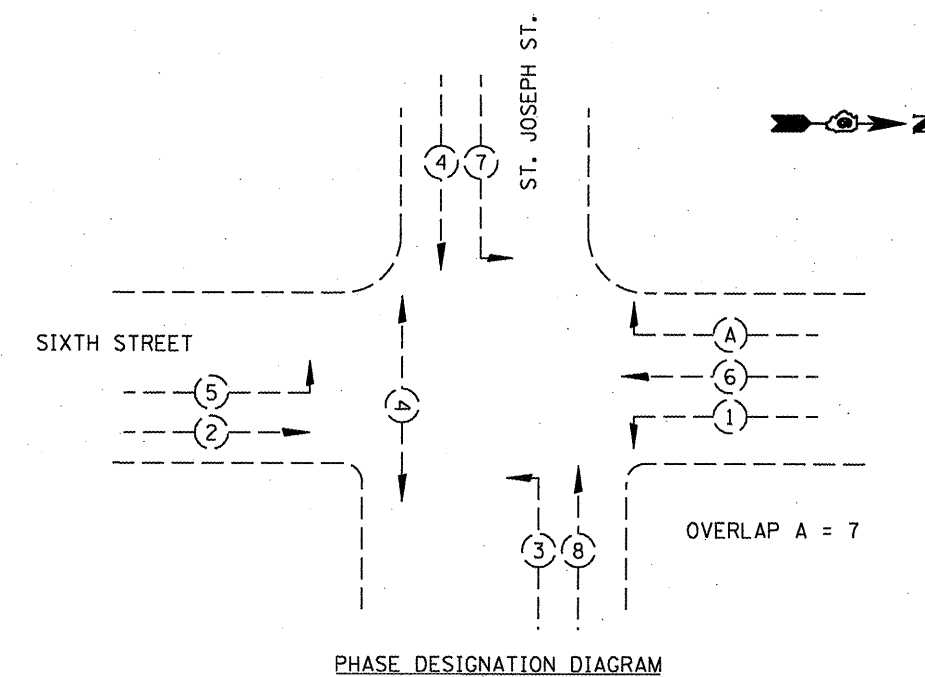
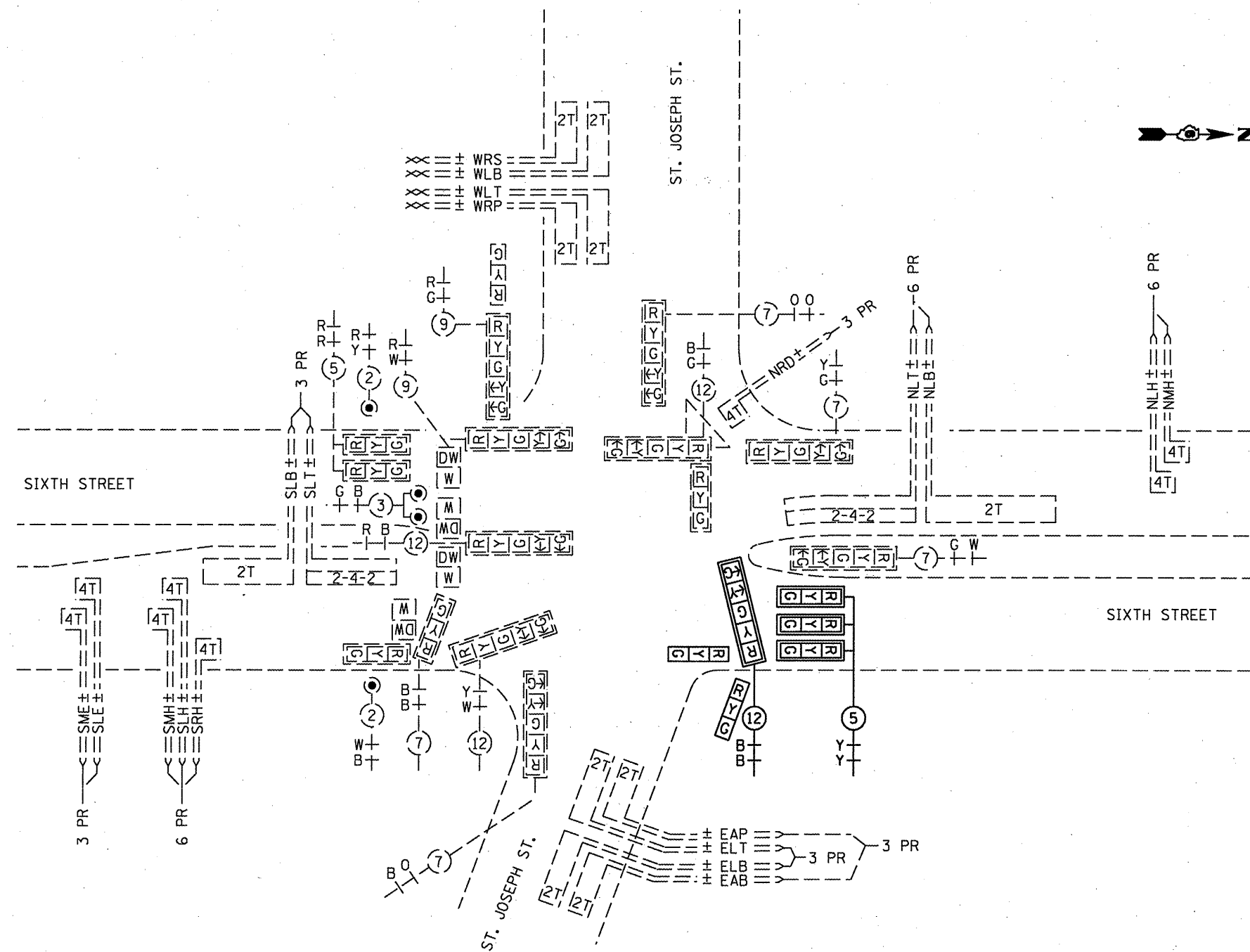
- REMOVE EXISTING TRAFFIC SIGNAL EQUIPMENT. TRAFFIC SIGNAL EQUIPMENT CONSISTS OF:
 - 1 EACH STEEL MAST ARM ASSEMBLY AND POLE
 - 3 EACH TRAFFIC SIGNAL HEAD ASSEMBLY
- ALL REMOVED ITEMS SHALL BE DELIVERED TO THE CITY OF SPRINGFIELD, 1600 GROTH STREET.

FILE NAME =	USER NAME = cabrerars	DESIGNED -	REVISED -
at:\pwork\PW1007\CABRERARS\d0183102\0183102.dgn	186410_sht_ts01.dgn	DRAWN -	REVISED -
	PLOT SCALE = 48,0000 ' / IN.	CHECKED -	REVISED -
	PLOT DATE = Feb-02-2010 04:05:35PM	DATE -	REVISED -

**STATE OF ILLINOIS
DEPARTMENT OF TRANSPORTATION**

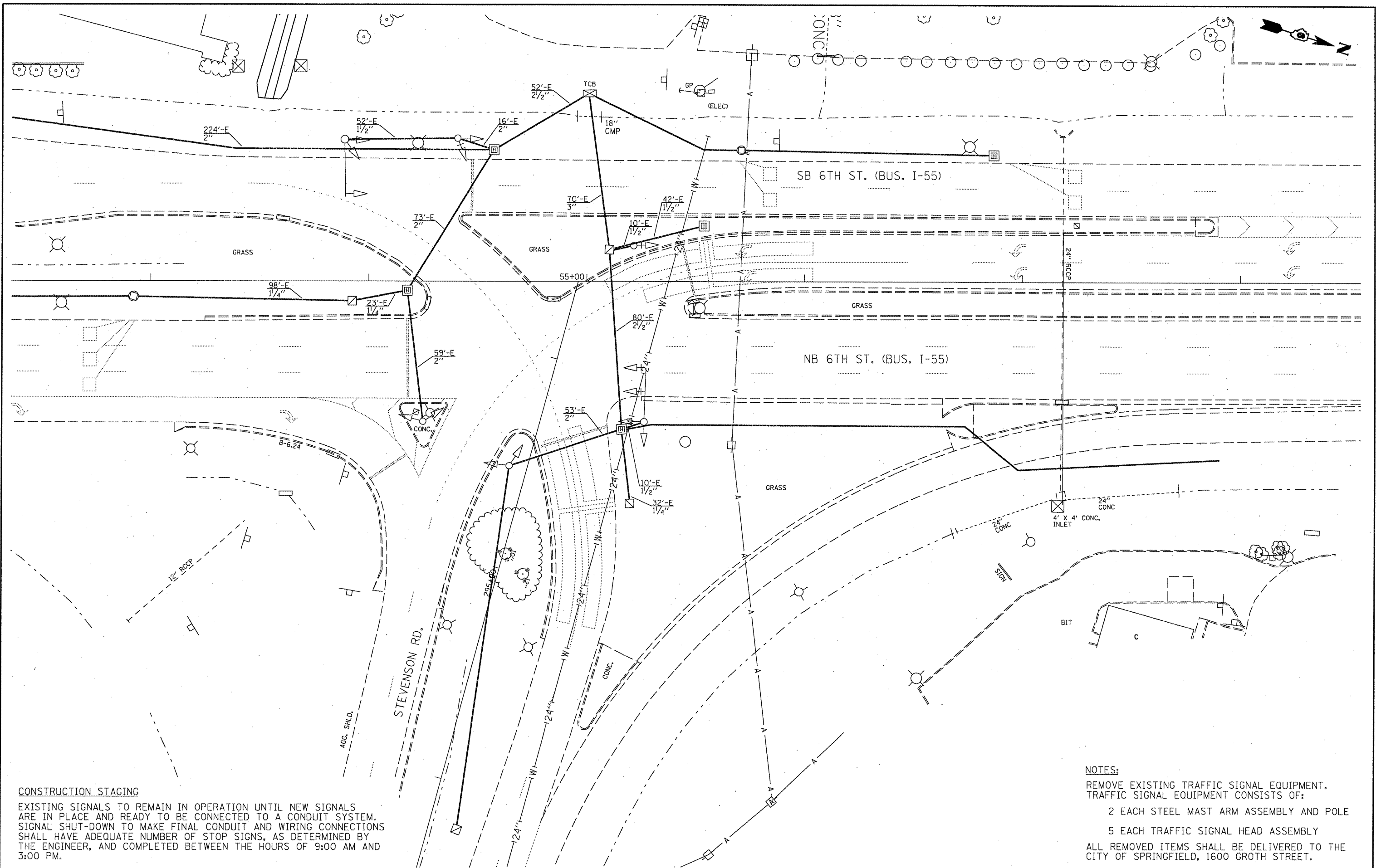
**EXISTING TRAFFIC SIGNAL PLAN
ST. JOSEPH ST. & SIXTH ST.**

F.A.P. RTE. 666	SECTION 110TS-4 & 15TS-5	COUNTY SANGAMON	TOTAL SHEETS 20	SHEET NO. 8
SCALE: 20			SHEET NO. OF SHEETS STA. TO STA.	
ILLINOIS FED. AID PROJECT CONTRACT NO. 72036				



FILE NAME =		USER NAME = cabrerars		DESIGNED -		REVISED -		STATE OF ILLINOIS DEPARTMENT OF TRANSPORTATION		PROPOSED CABLE PLAN ST. JOSEPH ST. & SIXTH ST.		F.A.P. RTE. 666		SECTION 110TS-4 & 15TS-5		COUNTY SANGAMON		TOTAL SHEETS 20		SHEET NO. 11	
c:\pwwork\pwwid01\CABRERARS\d0183102		16410_sht.ts04.dgn		DRAWN -		REVISED -						SCALE: 20		SHEET NO. OF SHEETS STA.		TO STA.		CONTRACT NO. 72D36		ILLINOIS FED. AID PROJECT	
PLOT SCALE = 40,0000' / IN.		CHECKED -		REVISIED -		REVISED -															
PLOT DATE = Feb-02-2010 04:09:01PM		DATE -		REVISED -		REVISED -															

NOT TO SCALE



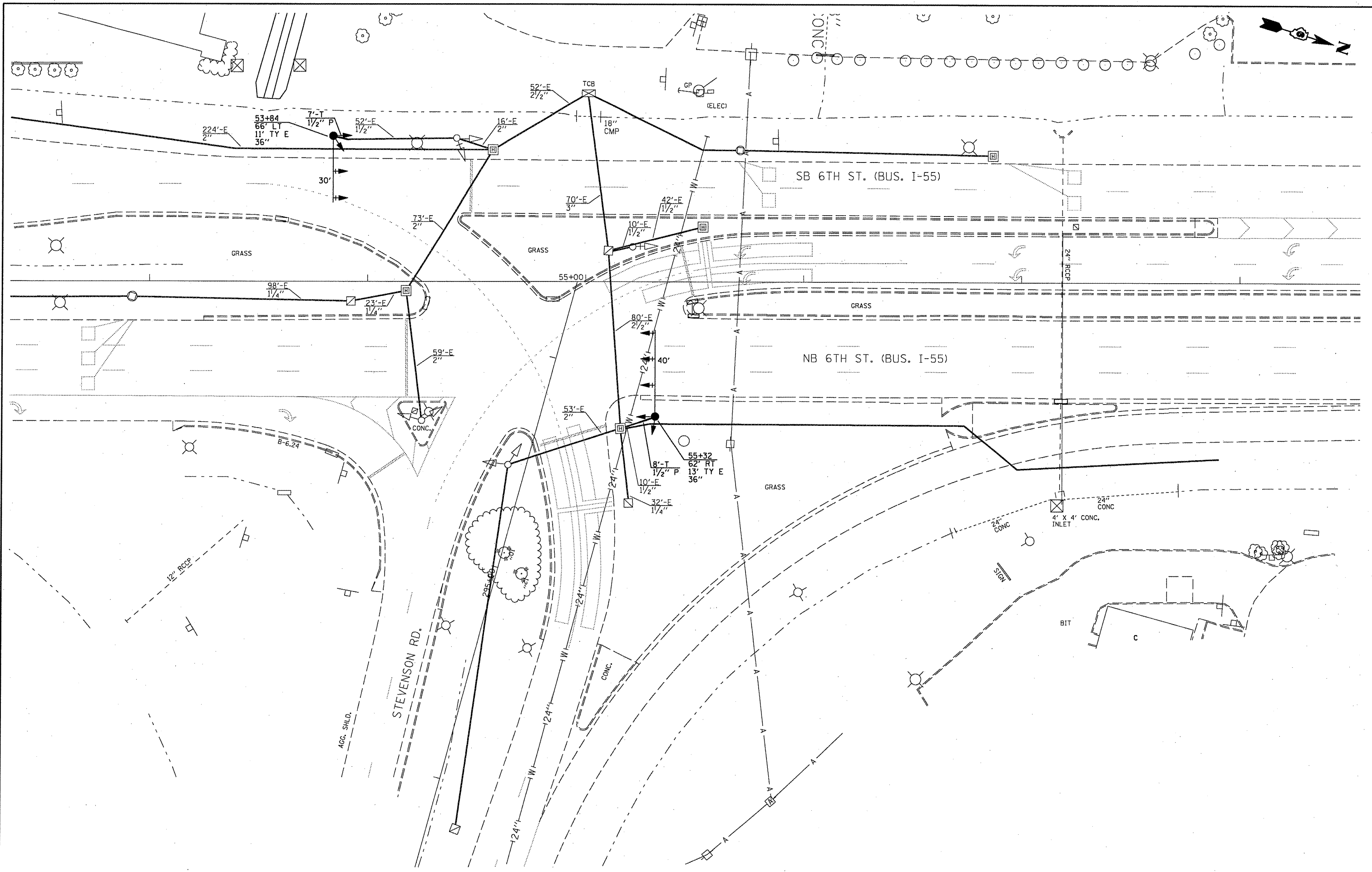
CONSTRUCTION STAGING

EXISTING SIGNALS TO REMAIN IN OPERATION UNTIL NEW SIGNALS ARE IN PLACE AND READY TO BE CONNECTED TO A CONDUIT SYSTEM. SIGNAL SHUT-DOWN TO MAKE FINAL CONDUIT AND WIRING CONNECTIONS SHALL HAVE ADEQUATE NUMBER OF STOP SIGNS, AS DETERMINED BY THE ENGINEER, AND COMPLETED BETWEEN THE HOURS OF 9:00 AM AND 3:00 PM.

NOTES:

- REMOVE EXISTING TRAFFIC SIGNAL EQUIPMENT. TRAFFIC SIGNAL EQUIPMENT CONSISTS OF:
 - 2 EACH STEEL MAST ARM ASSEMBLY AND POLE
 - 5 EACH TRAFFIC SIGNAL HEAD ASSEMBLY
- ALL REMOVED ITEMS SHALL BE DELIVERED TO THE CITY OF SPRINGFIELD, 1600 GROTH STREET.

FILE NAME =	USER NAME = cabrerars	DESIGNED -	REVISED -	STATE OF ILLINOIS DEPARTMENT OF TRANSPORTATION	EXISTING TRAFFIC SIGNAL PLAN STEVENSON DR. & SIXTH ST.	F.A.P. RTE. =	SECTION	COUNTY	TOTAL SHEETS	SHEET NO.
CONC. SHLD.	16410_sht.ts05.dgn	DRAWN -	REVISED -			666	110TS-4 & 15TS-5	SANGANON	20	12
12" RCP	PLOT SCALE = 40.0000' / IN.	CHECKED -	REVISED -			CONTRACT NO. 72036			ILLINOIS FED. AID PROJECT	
ACG. SHLD.	PLOT DATE = Feb-02-2010 04:18:10PM	DATE -	REVISED -			SCALE: 20	SHEET NO. OF SHEETS STA. TO STA.			



FILE NAME =
 c:\pwwork\FW\DOT\CABRERARS\0183102\0183102.dwg

USER NAME = cabrerars
 DRAWN =
 PLOT SCALE = 40.0000' / IN.
 PLOT DATE = Feb-02-2010 04:11:06PM

DESIGNED -
 CHECKED -
 DATE -

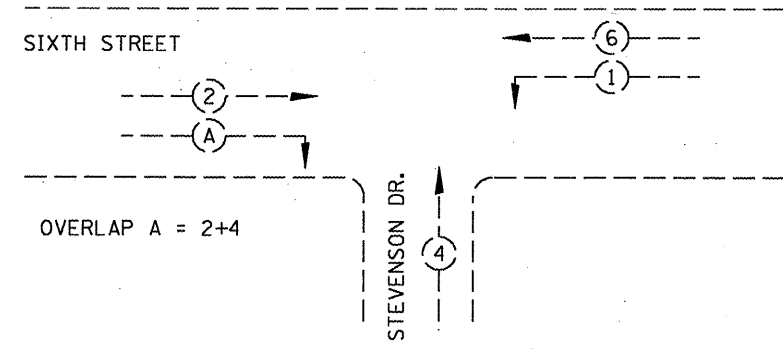
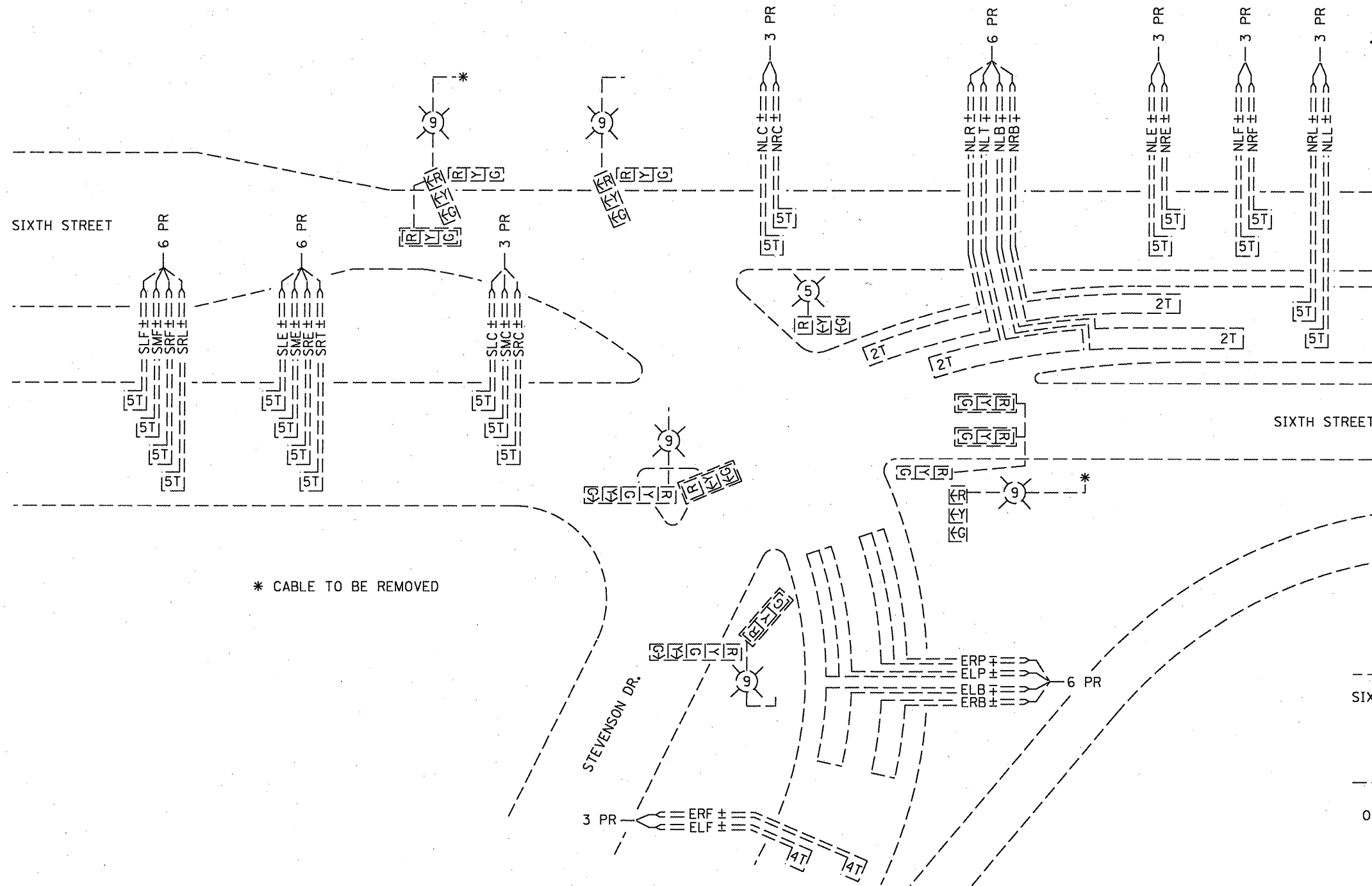
REVISED -
 REVISED -
 REVISED -
 REVISED -

**STATE OF ILLINOIS
 DEPARTMENT OF TRANSPORTATION**

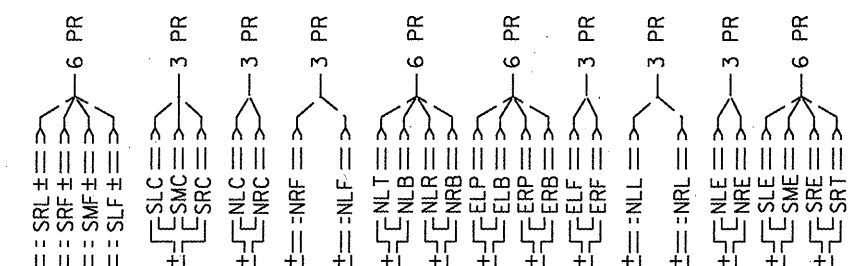
**PROPOSED TRAFFIC SIGNAL PLAN
 STEVENSON DR. & SIXTH ST.**

SCALE: 20 SHEET NO. OF SHEETS STA. TO STA.

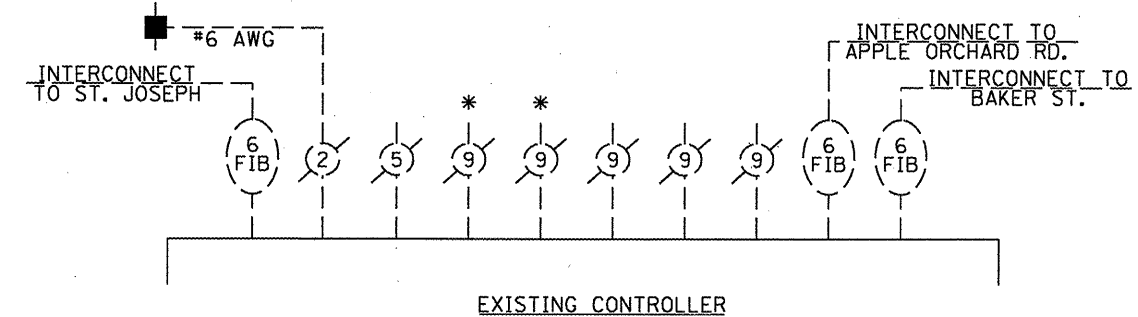
F.A.P. RTE.	SECTION	COUNTY	TOTAL SHEETS	SHEET NO.
666	110TS-4 & 15TS-5	SANGAMON	20	13
CONTRACT NO. 72036				
ILLINOIS FED. AID PROJECT				



PHASE DESIGNATION DIAGRAM



PHASE	2	2	2	2	2	6	6	6	6	1	1	4	4	4	4	1	1	6	2	2
EXISTING DETECTORS																				



EXISTING CONTROLLER

NOT TO SCALE

FILE NAME =
 c:\pw_work\PW1001\CABREHARS\0183102\0516410_sht.td07.dgn

USER NAME = cabrehar
 PLOT SCALE = 40.0000' / IN.
 PLOT DATE = Feb-02-2010 04:12:15PM

DESIGNED -
 DRAWN -
 CHECKED -
 DATE -

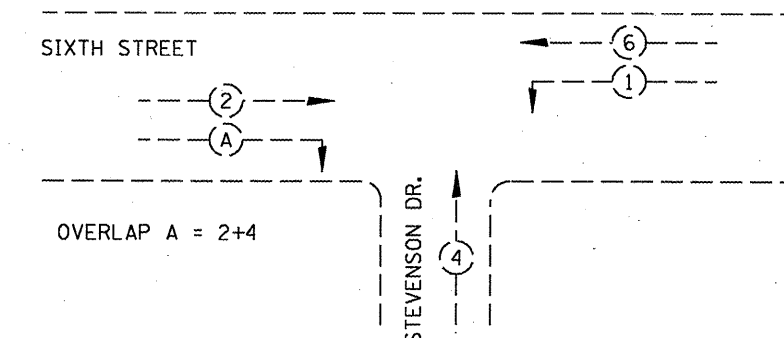
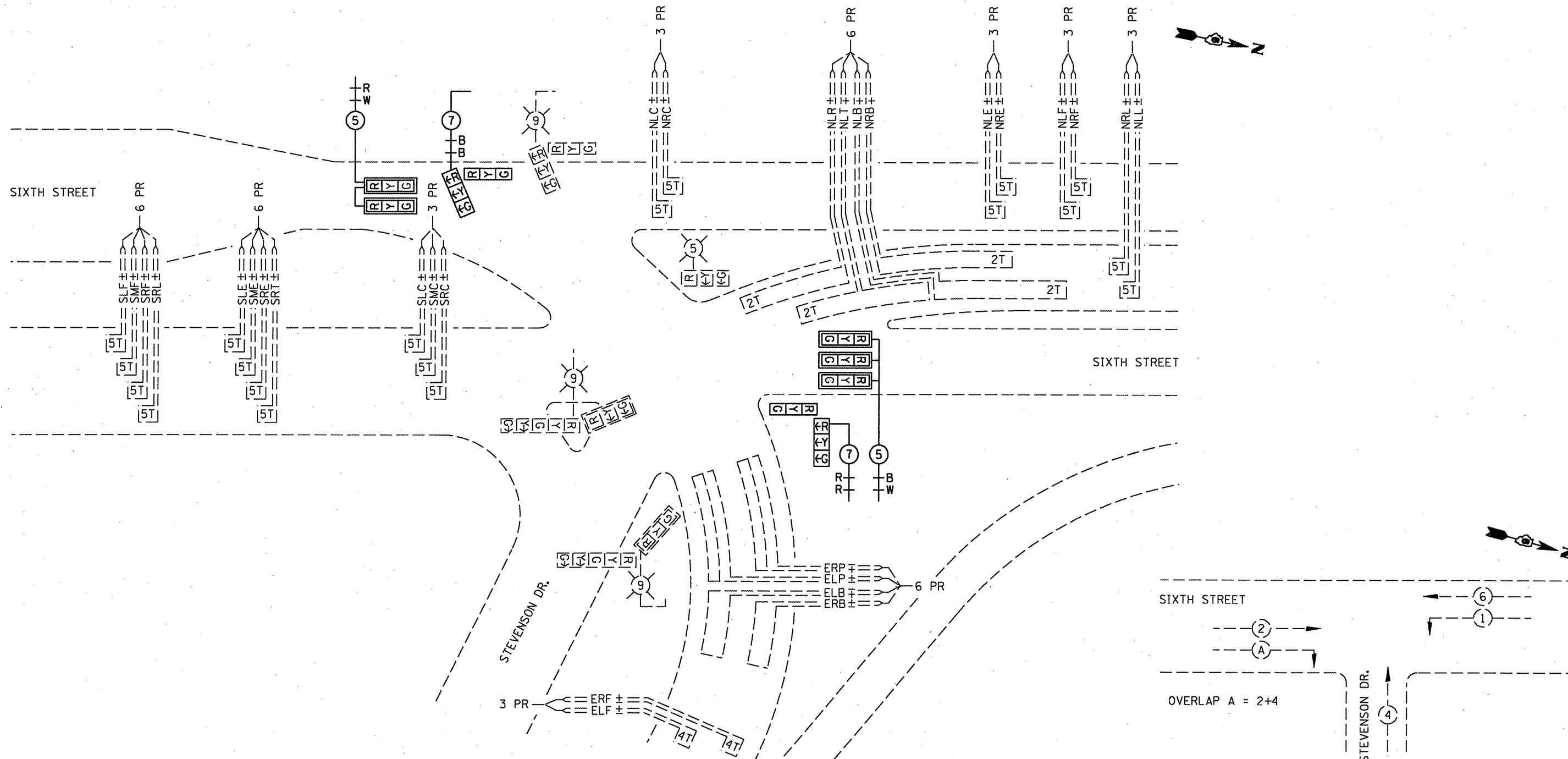
REVISED -
 REVISED -
 REVISED -
 REVISED -

**STATE OF ILLINOIS
 DEPARTMENT OF TRANSPORTATION**

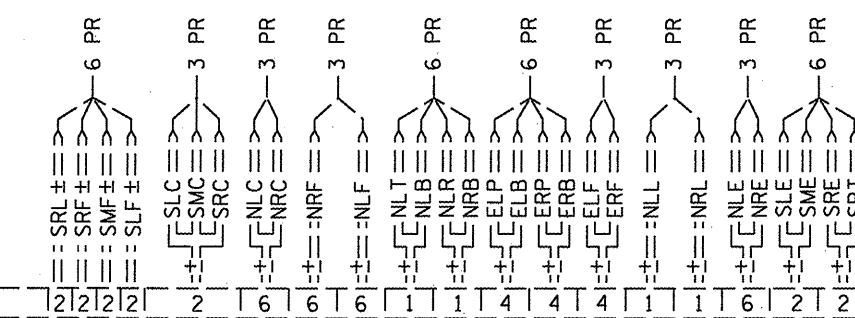
**EXISTING CABLE PLAN
 SIXTH ST. & STEVENSON DR.**
 SCALE: 20 SHEET NO. OF SHEETS STA. TO STA.

F.A.P. RTE.	SECTION	COUNTY	TOTAL SHEETS	SHEET NO.
666	110TS-4 & 15TS-5	SANGAMON	20	14

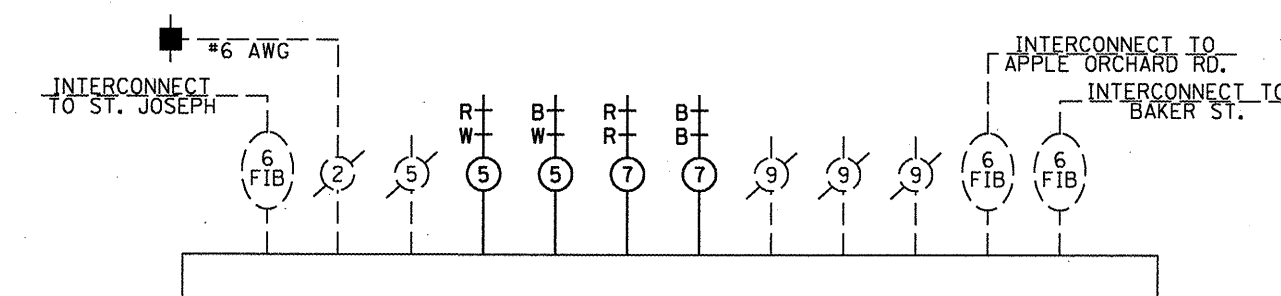
CONTRACT NO. 72036
 ILLINOIS FED. AID PROJECT



PHASE DESIGNATION DIAGRAM



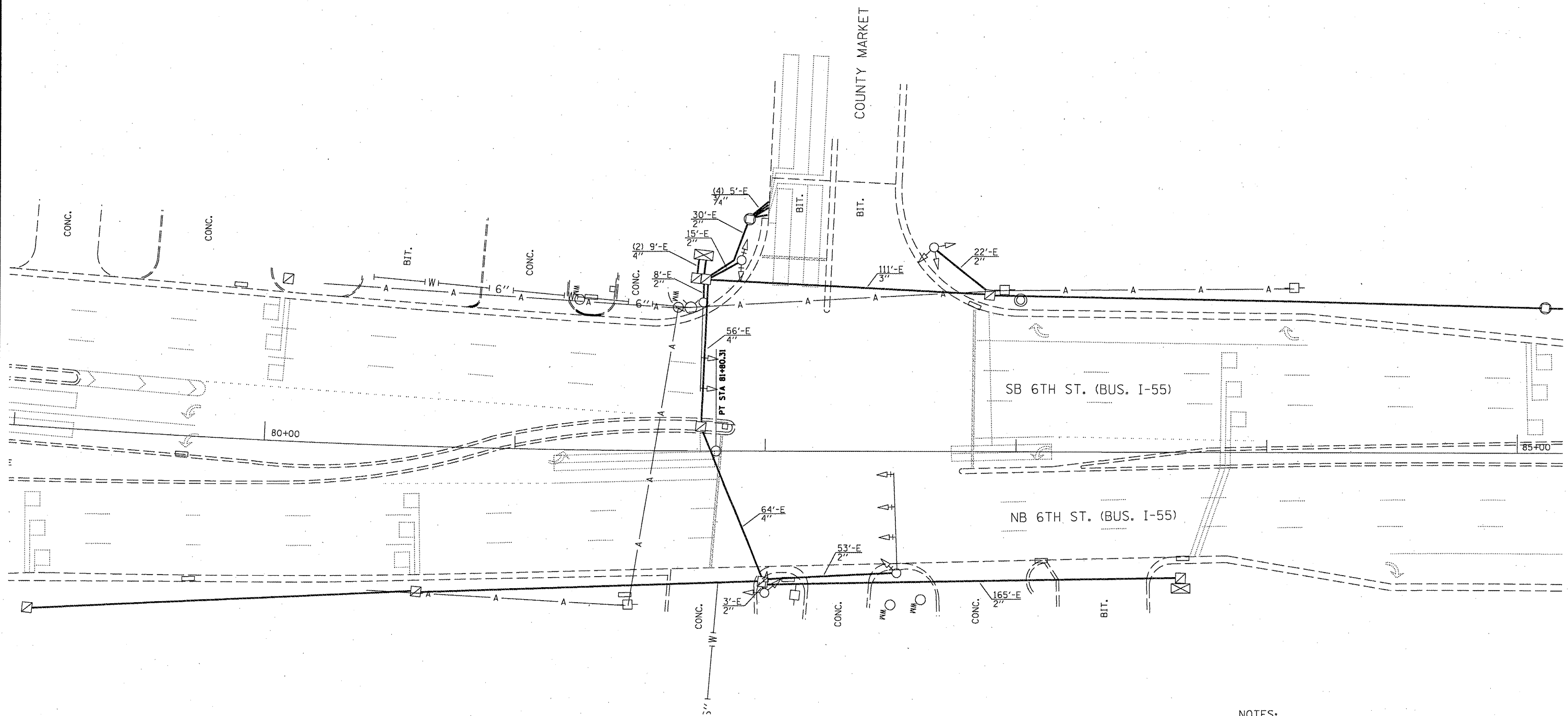
EXISTING DETECTORS



EXISTING CONTROLLER

NOT TO SCALE

FILE NAME =	USER NAME = cabrerars	DESIGNED -	REVISED -	STATE OF ILLINOIS DEPARTMENT OF TRANSPORTATION	PROPOSED CABLE PLAN SIXTH ST. & STEVENSON DR.		F.A.P. RTE. =	SECTION	COUNTY	TOTAL SHEETS	SHEET NO.	
ct:\pw_work\PI\DOT\CABRERARS\d0183102\0183102.dgn	616410_sht_ts08.dgn	DRAWN -	REVISED -		SCALE: 20	SHEET NO. OF SHEETS STA.	TO STA.	666	110TS-4 & 15TS-5	SANGAMON	20	15
PLOT SCALE = 40,0000' / IN.		CHECKED -	REVISED -					CONTRACT NO. 72036				
PLOT DATE = Feb-02-2010 04:13:26PM		DATE -	REVISED -					ILLINOIS FED. AID PROJECT				



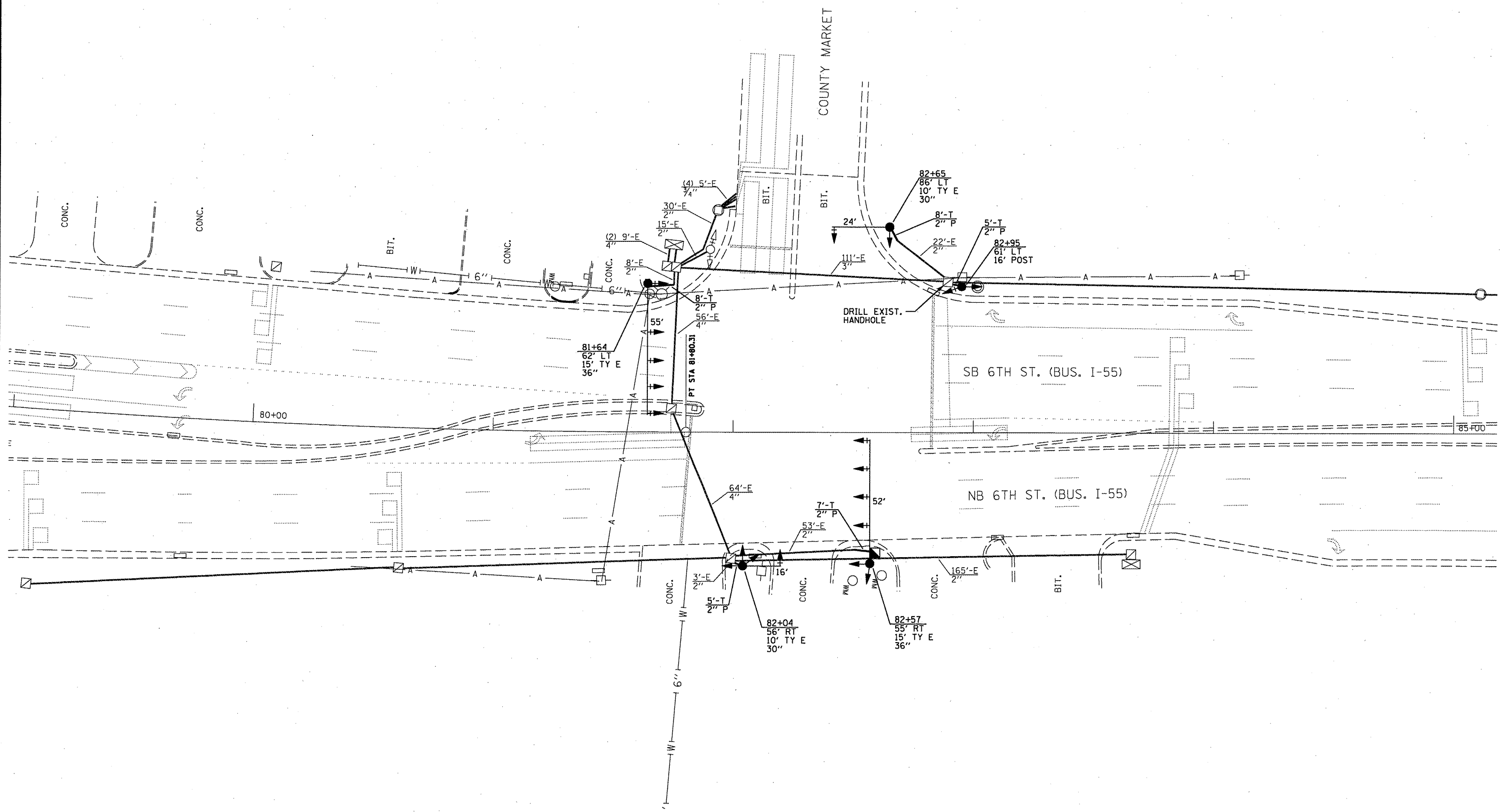
CONSTRUCTION STAGING

EXISTING SIGNALS TO REMAIN IN OPERATION UNTIL NEW SIGNALS ARE IN PLACE AND READY TO BE CONNECTED TO A CONDUIT SYSTEM. SIGNAL SHUT-DOWN TO MAKE FINAL CONDUIT AND WIRING CONNECTIONS SHALL HAVE ADEQUATE NUMBER OF STOP SIGNS, AS DETERMINED BY THE ENGINEER, AND COMPLETED BETWEEN THE HOURS OF 9:00 AM AND 3:00 PM.

NOTES:

- REMOVE EXISTING TRAFFIC SIGNAL EQUIPMENT. TRAFFIC SIGNAL EQUIPMENT CONSISTS OF:
 - 2 EACH STEEL MAST ARM ASSEMBLY AND POLE
 - 2 EACH TRAFFIC SIGNAL POST
 - 10 EACH TRAFFIC SIGNAL HEAD ASSEMBLY
- ALL REMOVED ITEMS SHALL BE DELIVERED TO THE CITY OF SPRINGFIELD, 1600 GROTH STREET.

FILE NAME =	USER NAME = cbrerars	DESIGNED -	REVISED -	STATE OF ILLINOIS DEPARTMENT OF TRANSPORTATION	EXISTING TRAFFIC SIGNAL PLAN COUNTY MARKET ENTRANCE & SIXTH ST.			F.A.P. RTE. 666	SECTION 110TS-4 & 15TS-5	COUNTY SANGAMON	TOTAL SHEETS 20	SHEET NO. 16
ot:\pw\work\PIWIDOT\CABRERARS\0183102\0516410_sh_t.tso9.dgn		DRAWN -	REVISED -		SCALE: 20	SHEET NO. OF SHEETS	STA. TO STA.	CONTRACT NO. 72036				
		PLOT SCALE = 40.0000' / IN.	CHECKED -		REVISED -	ILLINOIS FED. AID PROJECT						
		PLOT DATE = Feb-02-2010 04:14:36PM	DATE -		REVISED -							



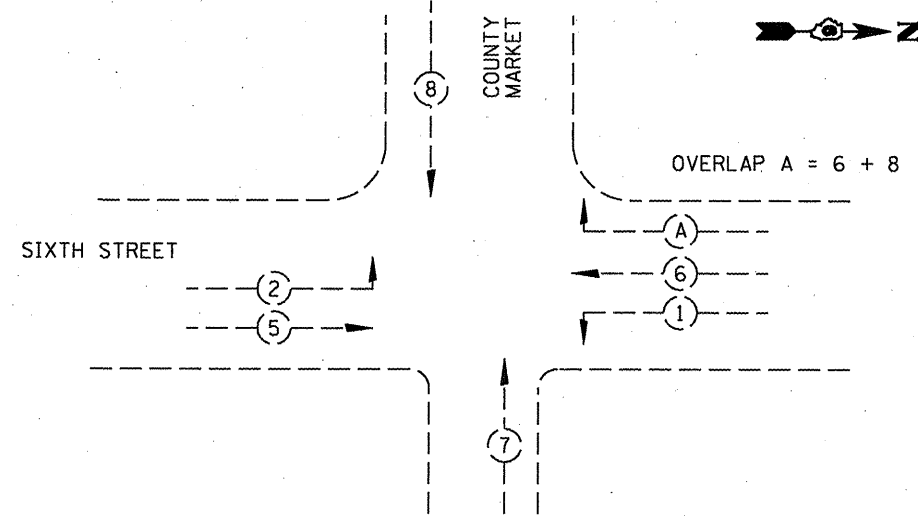
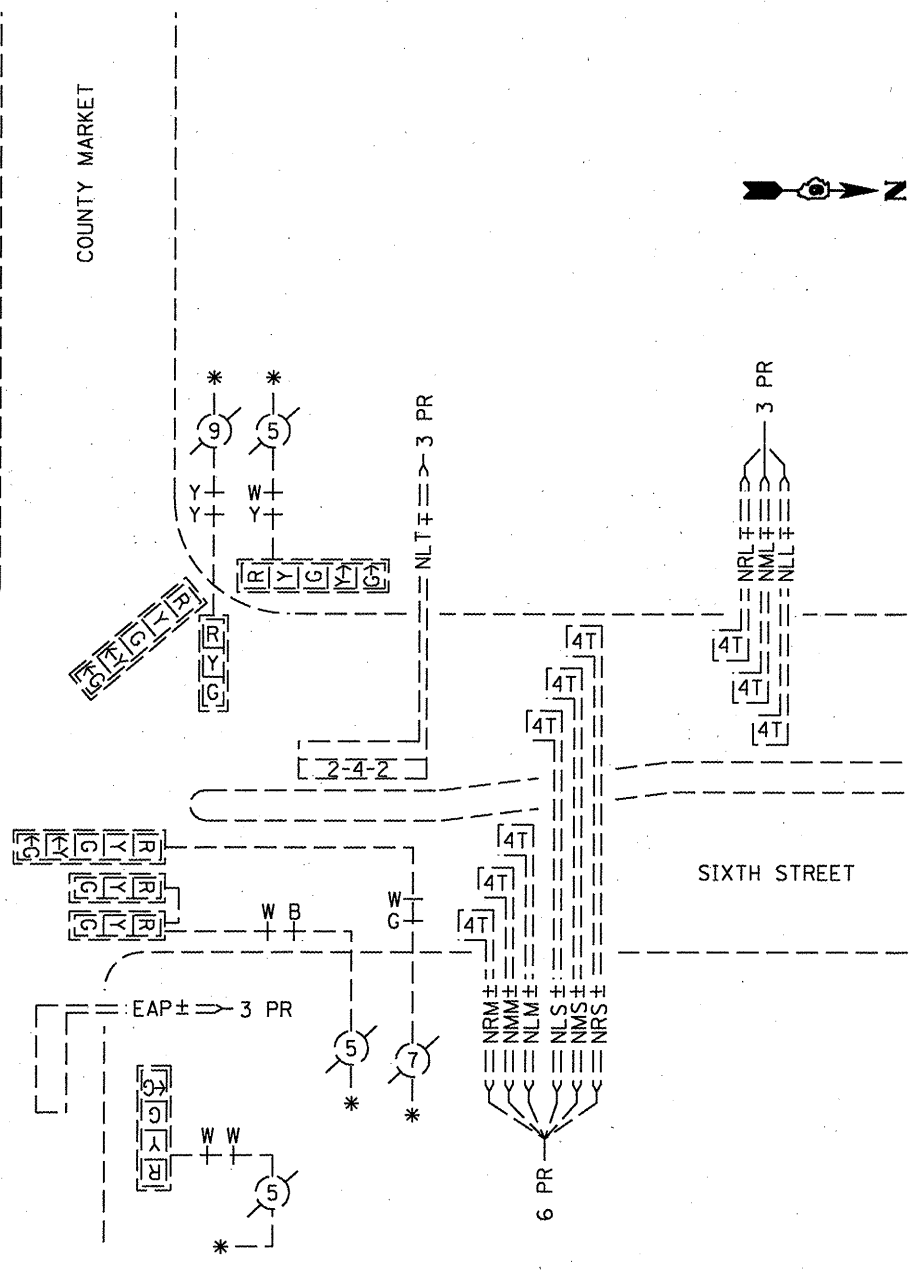
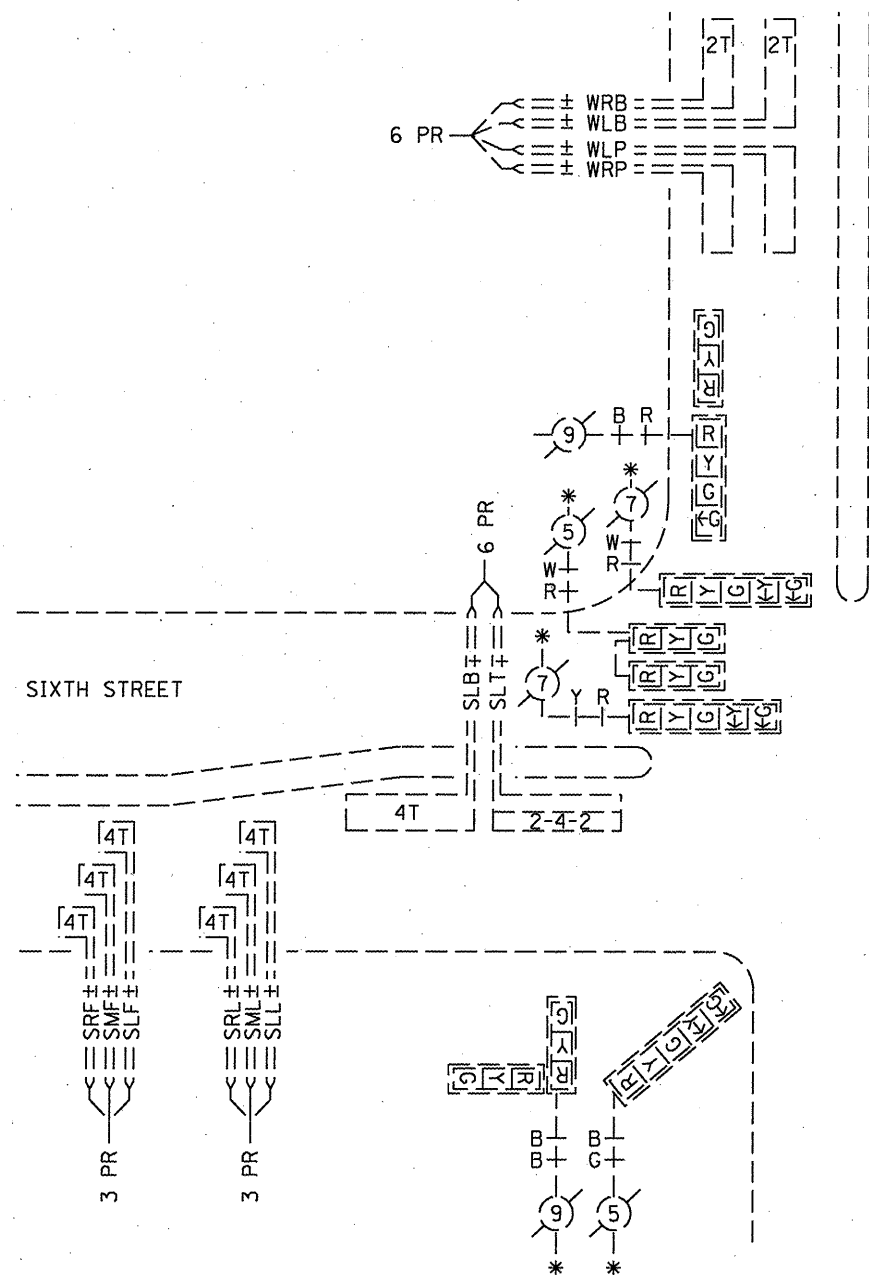
FILE NAME =	USER NAME = cabrerars	DESIGNED -	REVISED -
ct:\pw\work\PMIDOT\CABRERARS\0183102\0183102.dgn		DRAWN -	REVISED -
	PLOT SCALE = 48.0000' / IN.	CHECKED -	REVISED -
	PLOT DATE = Feb-02-2010 04:16:19PM	DATE -	REVISED -

**STATE OF ILLINOIS
DEPARTMENT OF TRANSPORTATION**

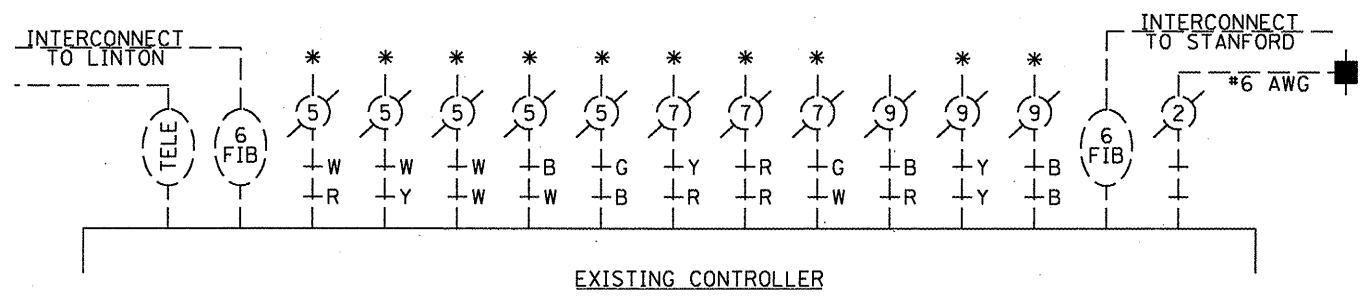
**PROPOSED TRAFFIC SIGNAL PLAN
COUNTY MARKET ENTRANCE & SIXTH ST.**

F.A.P. RTE.	SECTION	COUNTY	TOTAL SHEETS	SHEET NO.
666	110TS-4 & 15TS-5	SANGAMON	20	17
CONTRACT NO. 72D36				
ILLINOIS FED. AID PROJECT				

SCALE: 20 SHEET NO. OF SHEETS STA. TO STA.



* CABLE TO BE REMOVED



PHASE	6	6	6	SPARE	SPARE	SPARE	SPARE	6	6	6	3	3	3	SPARE	5	5	7	8	8	8
SYSTEM CALL (S)	T	S	S					6			2	2	2		5	5	7	8	8	8
VEHICLE COUNT (V)	V	V	V					V			V	V	V							
CALL ON GREEN ONLY (G)								G												

NOT TO SCALE

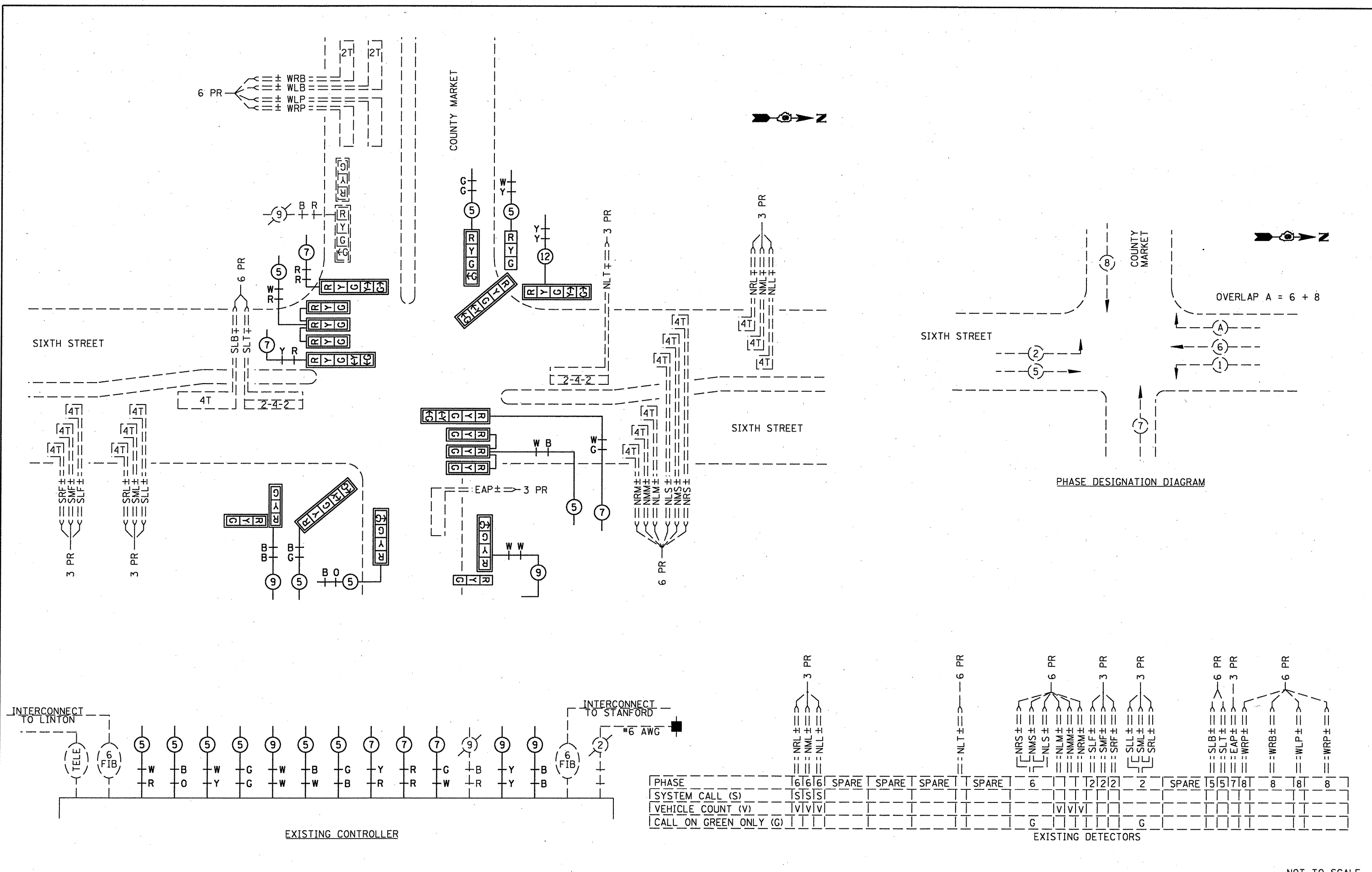
FILE NAME =	USER NAME = cabrerars	DESIGNED -	REVISED -
ca\pw_work\PW1001\CABRERARS\d0183102\0516410_sht.tell.dgn	616410_sht.tell.dgn	DRAWN -	REVISED -
PLOT SCALE = 40,0000' / IN.		CHECKED -	REVISED -
PLOT DATE = Feb-02-2010 04:17:27PM		DATE -	REVISED -

**STATE OF ILLINOIS
DEPARTMENT OF TRANSPORTATION**

**EXISTING CABLE PLAN
SIXTH ST. & COUNTY MARKET**

SCALE: 20 SHEET NO. OF SHEETS STA. TO STA.

F.A.P. RTE.	SECTION	COUNTY	TOTAL SHEETS	SHEET NO.
666	110TS-4 & 15TS-5	SANGAMON	20	18
CONTRACT NO. 72036				
ILLINOIS FED. AID PROJECT				



PHASE	6	6	6	SPARE	SPARE	SPARE	SPARE	6	2	2	2	2	SPARE	5	5	7	8	8	8	8
SYSTEM CALL (S)	S	S	S					S						S	S	E	W	W	W	W
VEHICLE COUNT (V)	V	V	V					V												
CALL ON GREEN ONLY (G)								G												

