

F.A.P. RTE.	SECTION	COUNTY	TOTAL SHEETS	SHEET NO.
310	69-2LS	MORGAN	16	1

STATE OF ILLINOIS
DEPARTMENT OF TRANSPORTATION
DIVISION OF HIGHWAYS

**PROPOSED
HIGHWAY PLANS**

FAP ROUTE 310 (US 67)
SECTION 69-2LS
PROJECT LANDSCAPING
MORGAN COUNTY
C-96-178-10

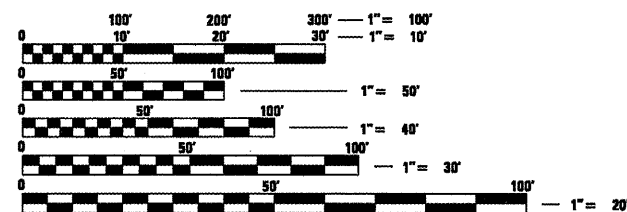
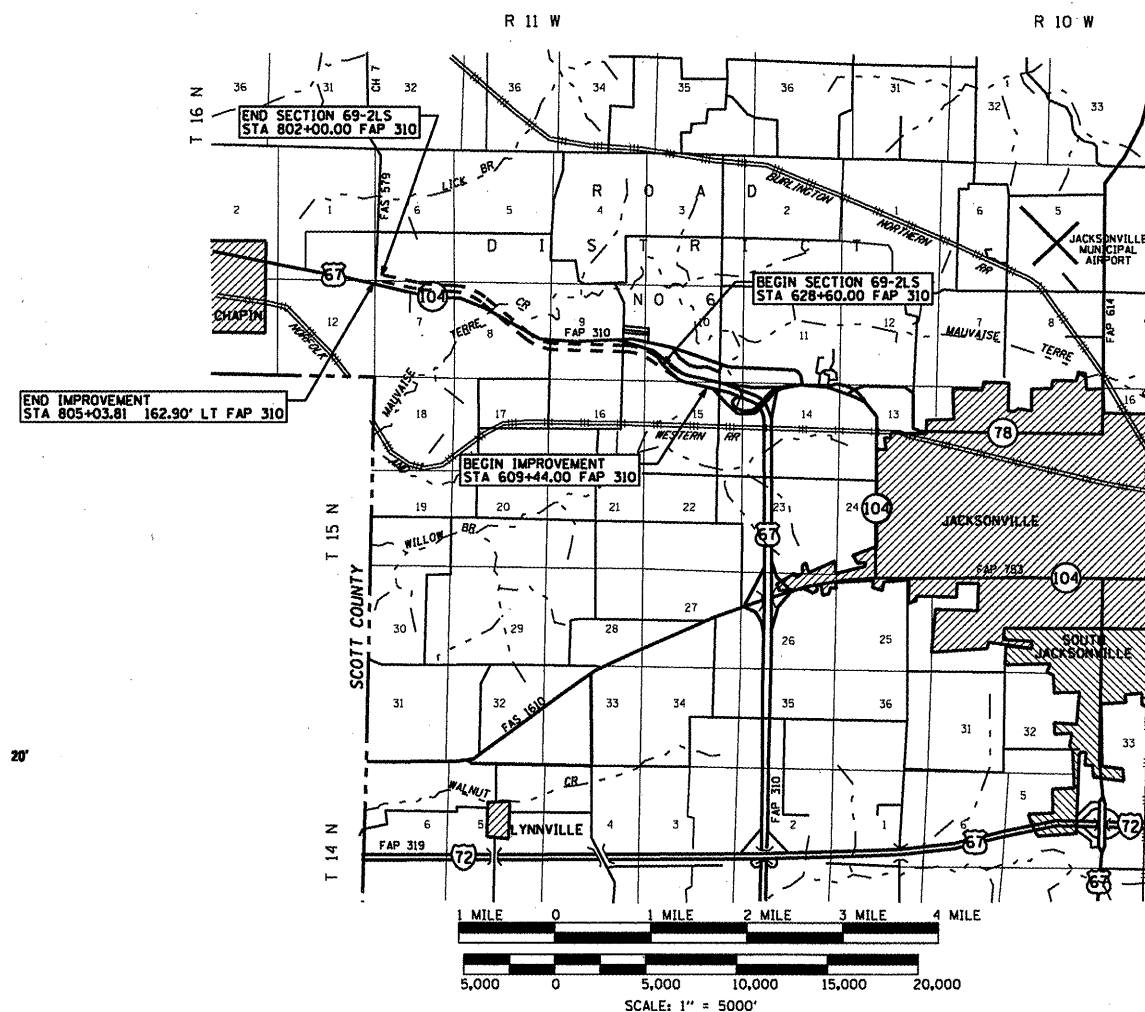
D-96-549-00

INDEX OF SHEETS:

SHEET #	DESCRIPTION
1	COVER SHEET
2	SCHEDULE OF QUANTITIES /GENERAL NOTES
3-16	LANDSCAPING PLANS - FAP 310

STANDARDS:

STANDARD #
000001-05
701101-02
701106-02
701901-01



FULL SIZE PLANS HAVE BEEN PREPARED USING STANDARD ENGINEERING SCALES. REDUCED SIZED PLANS WILL NOT CONFORM TO STANDARD SCALES, IN MAKING MEASUREMENTS ON REDUCED PLANS, THE ABOVE SCALES MAY BE USED.

J.U.I.E.
JOINT UTILITY LOCATION INFORMATION FOR EXCAVATION
1-800-892-0123

CONTRACT NO. 72D47

LOCATION MAP

LENGTH OF SECTION 69-2(2B) = 17,340.00' = 3.284 MILES
LENGTH OF IMPROVEMENT = 19,559.81' = 3.705 MILES

STATE OF ILLINOIS
DEPARTMENT OF TRANSPORTATION
DIVISION OF HIGHWAYS

SUBMITTED February 3, 2010
Rugby Z. Dinkley
DISTRICT ENGINEER

March 19, 2010
Scott E. Stett, P.E. (RS)
ENGINEER OF DESIGN AND ENVIRONMENT

acting
March 19, 2010
Christine M. Reed (RS)
DIRECTOR, DIVISION OF HIGHWAYS

PRINTED BY THE AUTHORITY
OF THE STATE OF ILLINOIS

100%
STATE
Y003

SUMMARY OF QUANTITIES

CONTRACT NO. 72D47				
F.A.P. RTE.	SECTION	COUNTY	TOTAL SHEETS	SHEET NO.
310	69-2LS	MORGAN	16	2
STA.		TO STA.		
FED. ROAD DIST. NO.		ILLINOIS FED. AID PROJECT		



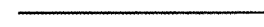


GENERAL NOTES

COMMITMENTS

CODED PAY ITEM	ITEM	UNIT	TOTAL	QUANTITY PER SHEET														
				3	4	5	6	7	8	9	10	11	12	13	14	15	16	
25000750	MOWING	ACRE	39.0		1.32	2.06	2.13	3.74	3.61	3.09	4.58	4.76	7.85	3.45	2.40			
25001800	SEEDING, CLASS 4 (MODIFIED)	ACRE	39.0		1.32	2.06	2.13	3.74	3.61	3.09	4.58	4.76	7.85	3.45	2.40			
67100100	MOBILIZATION	L SUM	1.0															
A2001020	TREE, ACER RUBRUM (RED MAPLE), 2-1/2" CALIPER, BALLED AND BURLAPPED	EACH	38			2	2	11	2	6	3		9		3			
A2001720	TREE, ACER SACCHARUM (SUGAR MAPLE), 2-1/2" CALIPER, BALLED AND BURLAPPED	EACH	43			4		4	3	8	6	5	6	2	5			
A2002320	TREE, BETULA NIGRA (RIVER BIRCH), 2-1/2" CALIPER, BALLED AND BURLAPPED	EACH	15				2	2		2	2		5	2				
A2002916	TREE, CELTIS OCCIDENTALIS (COMMON HACKBERRY), 2" CALIPER, BALLED AND BURLAPPED	EACH	32		3	5	5		2	2		2	7	6				
A2007116	TREE, QUERCUS RUBRA (RED OAK), 2" CALIPER, BALLED AND BURLAPPED	EACH	25			2		5	2	2	3		5	3	3			
A2007720	TREE, TAXODIUM DISTICHUM SHAWNEE BRAVE (SHAWNEE BRAVE BALD CYPRESS), 2-1/2" CALIPER, BALLED AND BURLAPPED	EACH	5								2			3				
B2001166	TREE, CERCIS CANADENSIS (EASTERN REDBUD) 6' HEIGHT, CLUMP FORM, BALLED AND BURLAPPED	EACH	34		2							10	10	6	3			
B2001666	TREE, CRATAEGUS CRUSGALLI INERMIS (THORN LESS COCKSPUR HAWTHORN), 6' HEIGHT, SHRUB FORM, BALLED AND BURLAPPED	EACH	20		2	2	2		3	3	2		2	4				
B2001966	TREE, CRATAEGUS PHAENOPYRUM (WASHINGTON HAWTHORN), 6' HEIGHT, CLUMP FORM, BALLED AND BURLAPPED	EACH	26			3		3	2	3		3	2	5	5			
B2003066	TREE, MALUS BRANDYWINE (BRANDYWINE CRAB APPLE), 6' HEIGHT, CLUMP FORM, BALLED AND BURLAPPED	EACH	9				3		4					2				
B2004316	TREE, MALUS RADIANT (RADIANT CRABAPPLE), 2" CALIPER, TREE FORM, BALLED AND BURLAPPED	EACH	29		3		2			5	2	3	10	2	2			
B2005066	TREE, MALUS SNOWDRIFT (SNOWDRIFT CRAB APPLE), 6' HEIGHT, CLUMP FORM, BALLED AND BURLAPPED	EACH	30		2	2	2	2	3	3		5	5	3	3			
D2002972	EVERGREEN, PINUS STROBUS (EASTERN WHITE PINE), 6' HEIGHT, BALLED AND BURLAPPED	EACH	182		5	20	15		10	37	26		26	27	16			
K0026700	TREE CARE	EACH	2															
K0026710	TREE CARE MULCH	L SUM	1															
K0026720	TREE INTERMEDIATE AND SHRUB WATERING	UNIT	5															

LEGEND

PLAN VIEWS:

-  PROPOSED ACCESS CONTROL AND ROW
-  PROPOSED ACCESS CONTROL ONLY
-  PROPOSED WOVEN WIRE FENCE
-  PROPOSED PIPE UNDERDRAIN SYMBOL
- PUD** PIPE UNDERDRAIN
- TCE** TEMPORARY CONSTRUCTION EASEMENT
-  TRANSVERSE & BACKSLOPE DRAIN
- C.P.I.** CODED PAY ITEM

REVISIONS	
NAME	DATE

ILLINOIS DEPARTMENT OF TRANSPORTATION
SUMMARY OF QUANTITIES -
LANDSCAPING
FAP 310 (US 67)
SECTION 69-2(2B)
MORGAN COUNTY

SCALE: VERT. NONE
HORIZ. NONE
DATE

DRAWN BY
CHECKED BY

F.A.P. RTE.	SECTION	COUNTY	TOTAL SHEETS	SHEET NO.
310	69-2LS	MORGAN	16	3
STA. TO STA.				
FED. ROAD DIST. NO.		ILLINOIS	FED. AID PROJECT	

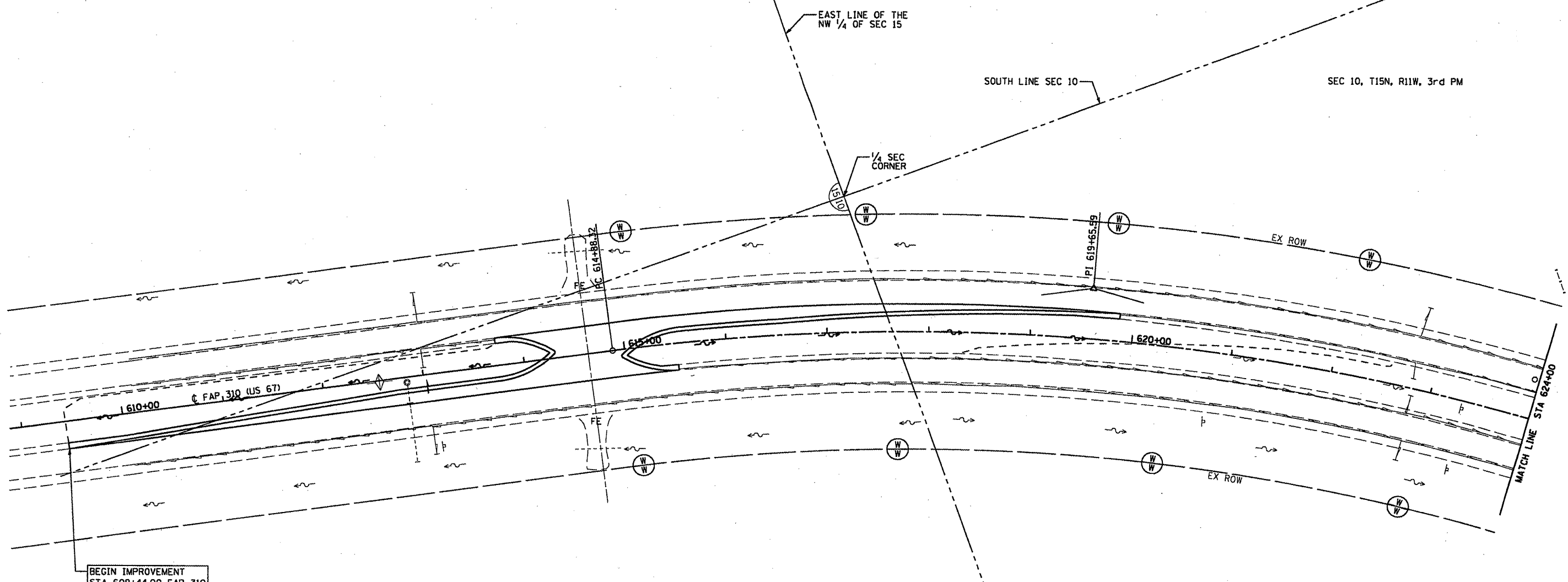
SEC 15, T15N, R11W, 3rd PM

SEC 10, T15N, R11W, 3rd PM

EAST LINE OF THE NW 1/4 OF SEC 15

SOUTH LINE SEC 10

1/4 SEC CORNER



BEGIN IMPROVEMENT
STA 609+44.00 FAP 310

DISTRICT SIX

EXAMINED January 14 20 10
[Signature]
OPERATIONS ENGINEER

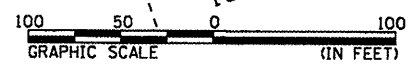
EXAMINED January 20 20 10
[Signature]
PROGRAM IMPLEMENTATION ENGINEER

EXAMINED January 14 20 10
[Signature]
PROGRAM DEVELOPMENT ENGINEER

NO PLANTINGS THIS SHEET

EAST LINE OF THE SW 1/4 OF SEC 10

SEC 10, T15N, R11W, 3rd PM




NOTE: ALL PLANTS TO BE PLANTED
MINIMUM 10' FROM EDGE ROW.

REVISIONS	
NAME	DATE

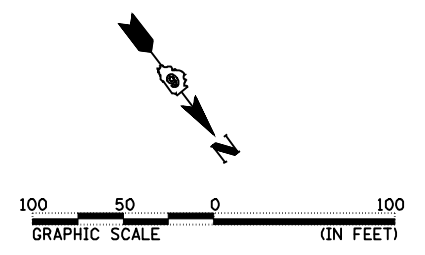
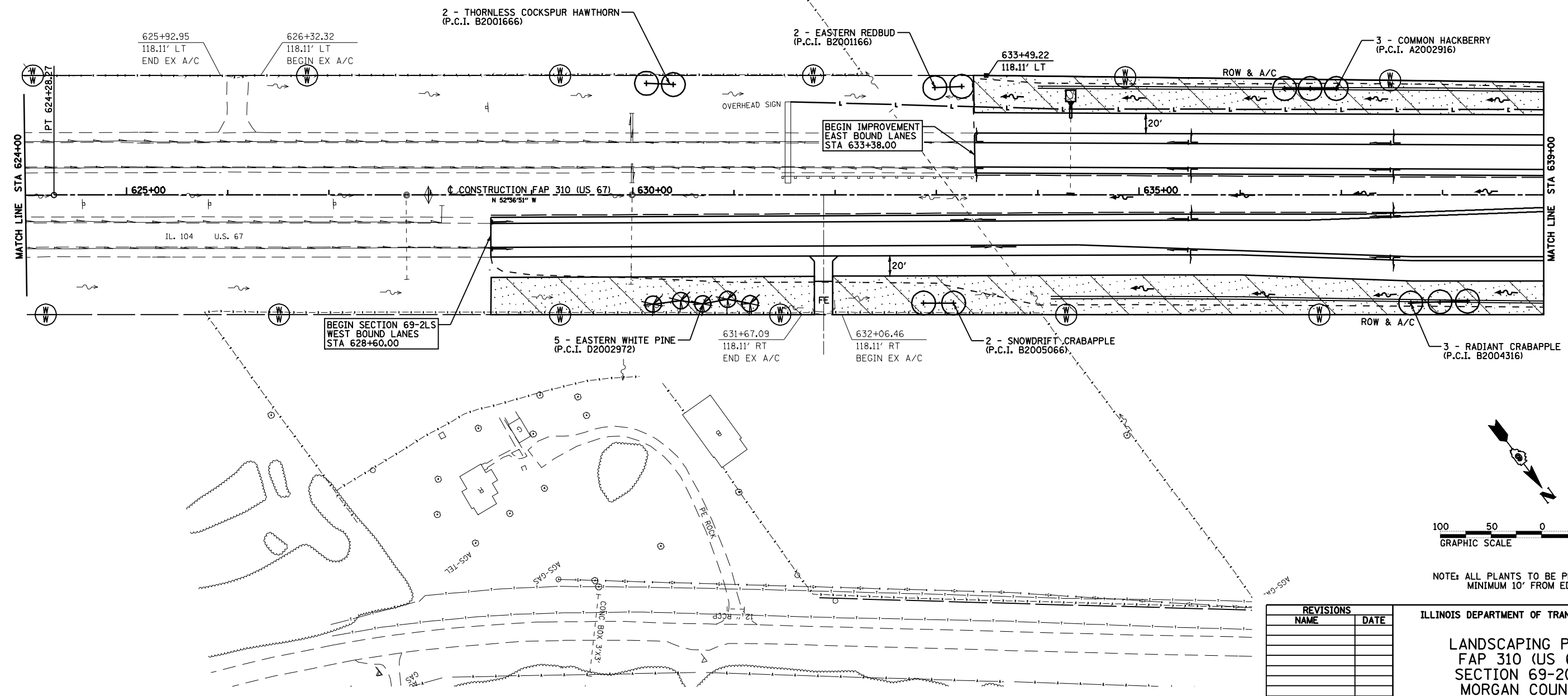
ILLINOIS DEPARTMENT OF TRANSPORTATION
LANDSCAPING PLAN
FAP 310 (US 67)
SECTION 69-2(2B)
MORGAN COUNTY
SCALE: VERT. _____
HORIZ. _____
DATE _____
DRAWN BY _____
CHECKED BY _____

F.A.P. RTE.	SECTION	COUNTY	TOTAL SHEETS	SHEET NO.
310	69-2LS	MORGAN	16	4
STA.		TO STA.		
FED. ROAD DIST. NO.		ILLINOIS	FED. AID PROJECT	

SEEDING LEGEND

 PROPOSED SEEDING CLASS 4 (MODIFIED)

SEC 10, T15N, R11W, 3rd PM



NOTE: ALL PLANTS TO BE PLANTED MINIMUM 10' FROM EDGE ROW

REVISIONS	
NAME	DATE

ILLINOIS DEPARTMENT OF TRANSPORTATION
LANDSCAPING PLAN
 FAP 310 (US 67)
 SECTION 69-2(2B)
 MORGAN COUNTY

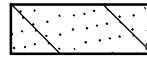
SCALE: VERT. _____
 HORIZ. _____

DRAWN BY _____
 CHECKED BY _____

SEC 10, T15N, R11W, 3rd PM

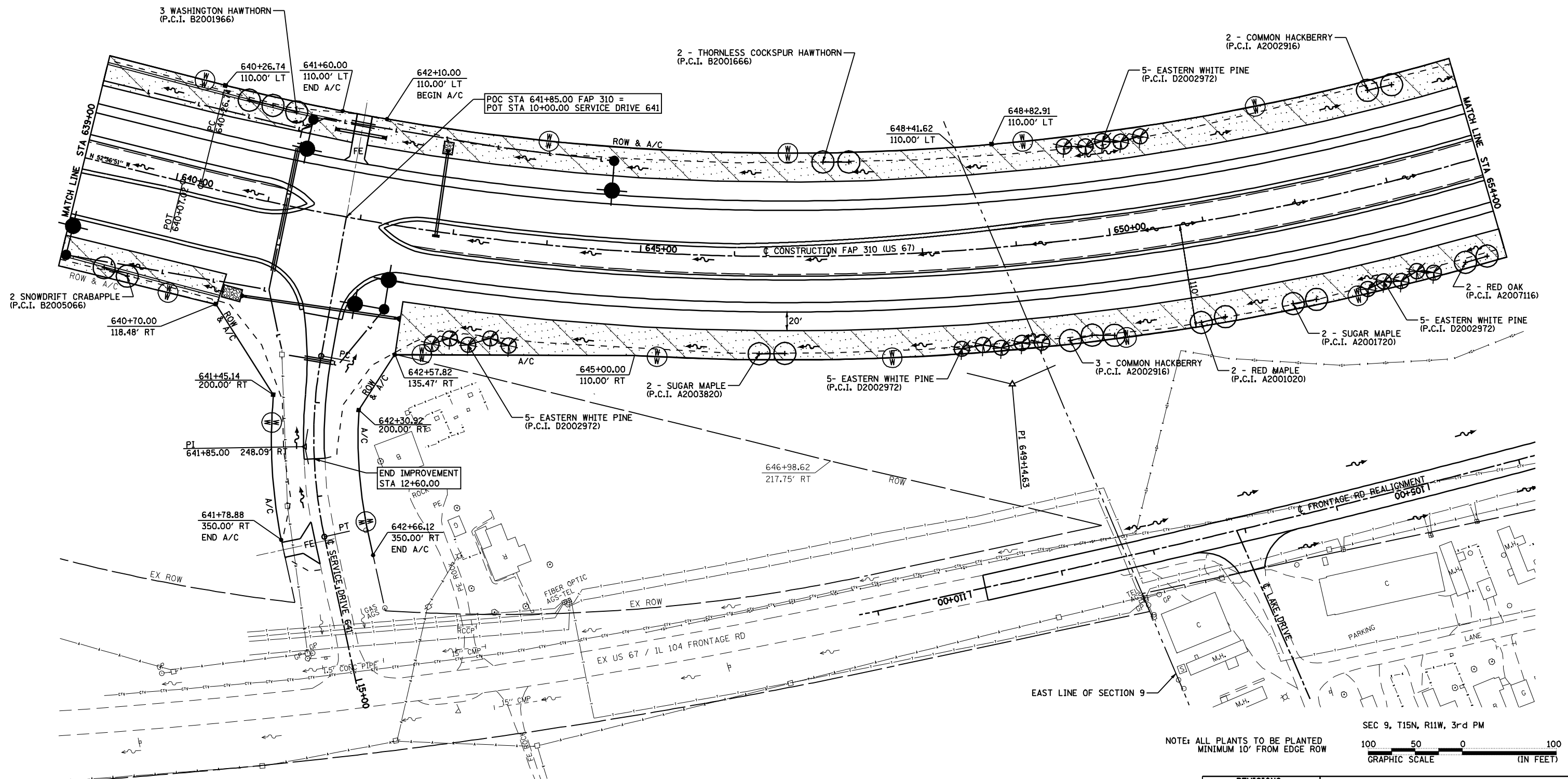
F.A.P. RTE.	SECTION	COUNTY	TOTAL SHEETS	SHEET NO.
310	69-2LS	MORGAN	16	5
STA.		TO STA.		
FED. ROAD DIST. NO.		ILLINOIS FED. AID PROJECT		

SEEDING LEGEND

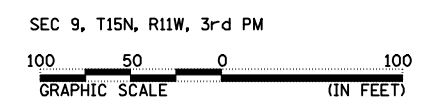
 PROPOSED SEEDING CLASS 4 (MODIFIED)

SEC 10, T15N, R11W, 3rd PM

SEC 9, T15N, R11W, 3rd PM



NOTE: ALL PLANTS TO BE PLANTED
MINIMUM 10' FROM EDGE ROW



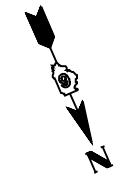
REVISIONS	
NAME	DATE

ILLINOIS DEPARTMENT OF TRANSPORTATION

LANDSCAPING PLAN
FAP 310 (US 67)
SECTION 69-2(B)
MORGAN COUNTY

SCALE: VERT. _____
HORIZ. _____

DATE _____ DRAWN BY _____
CHECKED BY _____

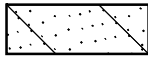


SEC 10, T15N, R11W, 3rd PM

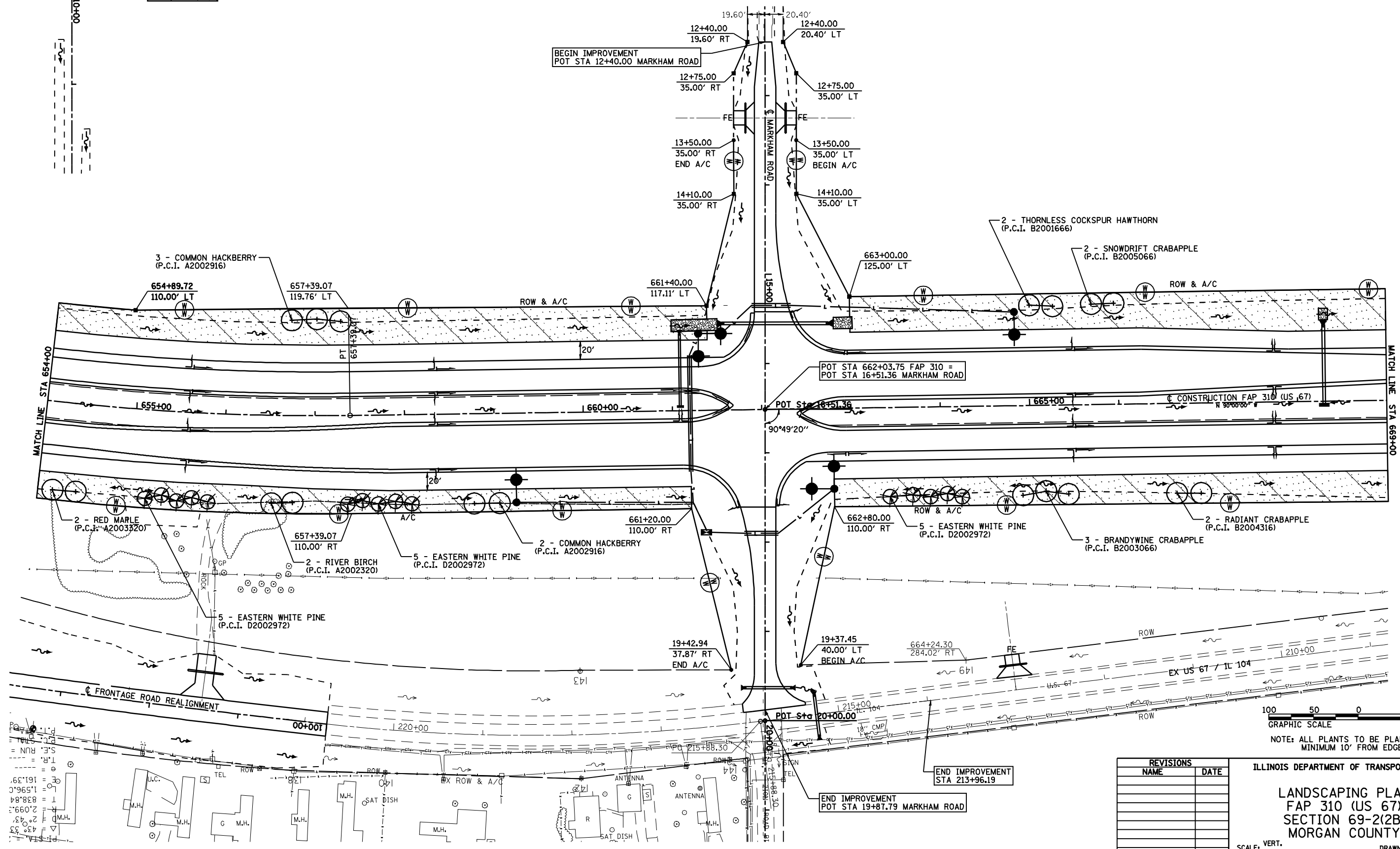
SEC 9, T15N, R11W, 3rd PM

F.A.P. RTE.	SECTION	COUNTY	TOTAL SHEETS	SHEET NO.
310	69-2LS	MORGAN	16	6
STA.		TO STA.		
FED. ROAD DIST. NO.		ILLINOIS FED. AID PROJECT		

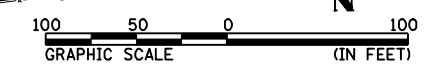
SEEDING LEGEND

 PROPOSED SEEDING CLASS 4 (MODIFIED)

SEC 9, T15N, R11W, 3rd PM



SEC 9, T15N, R11W, 3rd PM



NOTE: ALL PLANTS TO BE PLANTED MINIMUM 10' FROM EDGE ROW

REVISIONS	
NAME	DATE

ILLINOIS DEPARTMENT OF TRANSPORTATION

LANDSCAPING PLAN
FAP 310 (US 67)
SECTION 69-2(B)
MORGAN COUNTY

SCALE: VERT. _____
HORIZ. _____
DATE _____ DRAWN BY _____
CHECKED BY _____

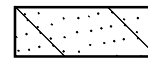
FAP 310 STA 654+00 TO STA 669+00

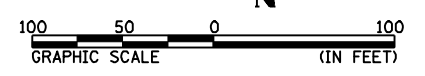
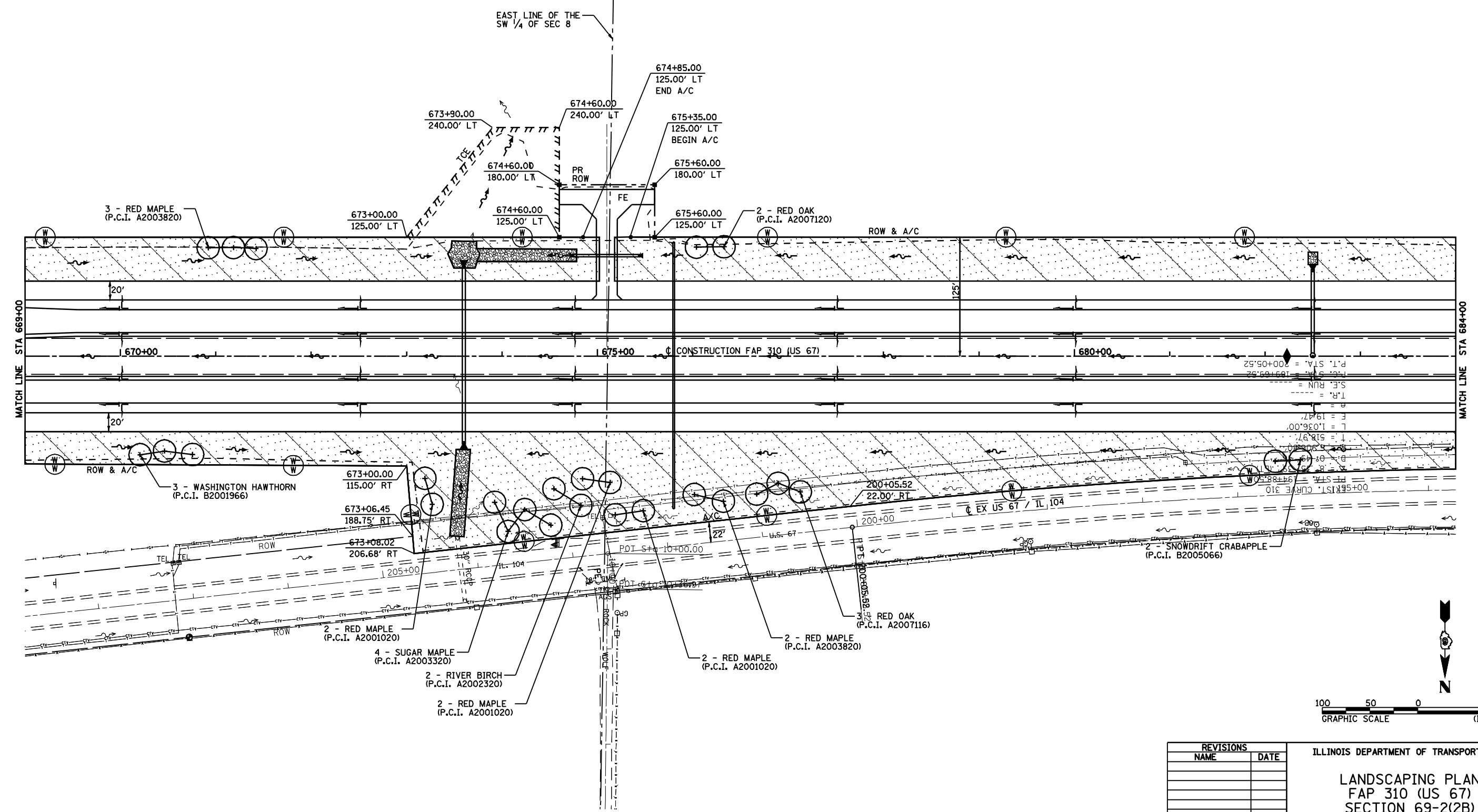
FAP 310 STA 654+00 TO STA 669+00

FAP 310 STA 654+00 TO STA 669+00

F.A.P. RTE.	SECTION	COUNTY	TOTAL SHEETS	SHEET NO.
310	69-2LS	MORGAN	16	7
STA.		TO STA.		
FED. ROAD DIST. NO.		ILLINOIS FED. AID PROJECT		

SEEDING LEGEND

 PROPOSED SEEDING CLASS 4 (MODIFIED)



REVISIONS	
NAME	DATE

ILLINOIS DEPARTMENT OF TRANSPORTATION
LANDSCAPING PLAN
FAP 310 (US 67)
SECTION 69-2(B)
MORGAN COUNTY

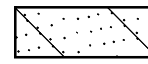
SCALE: VERT. _____
 HORIZ. _____
 DATE _____

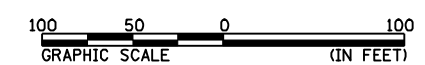
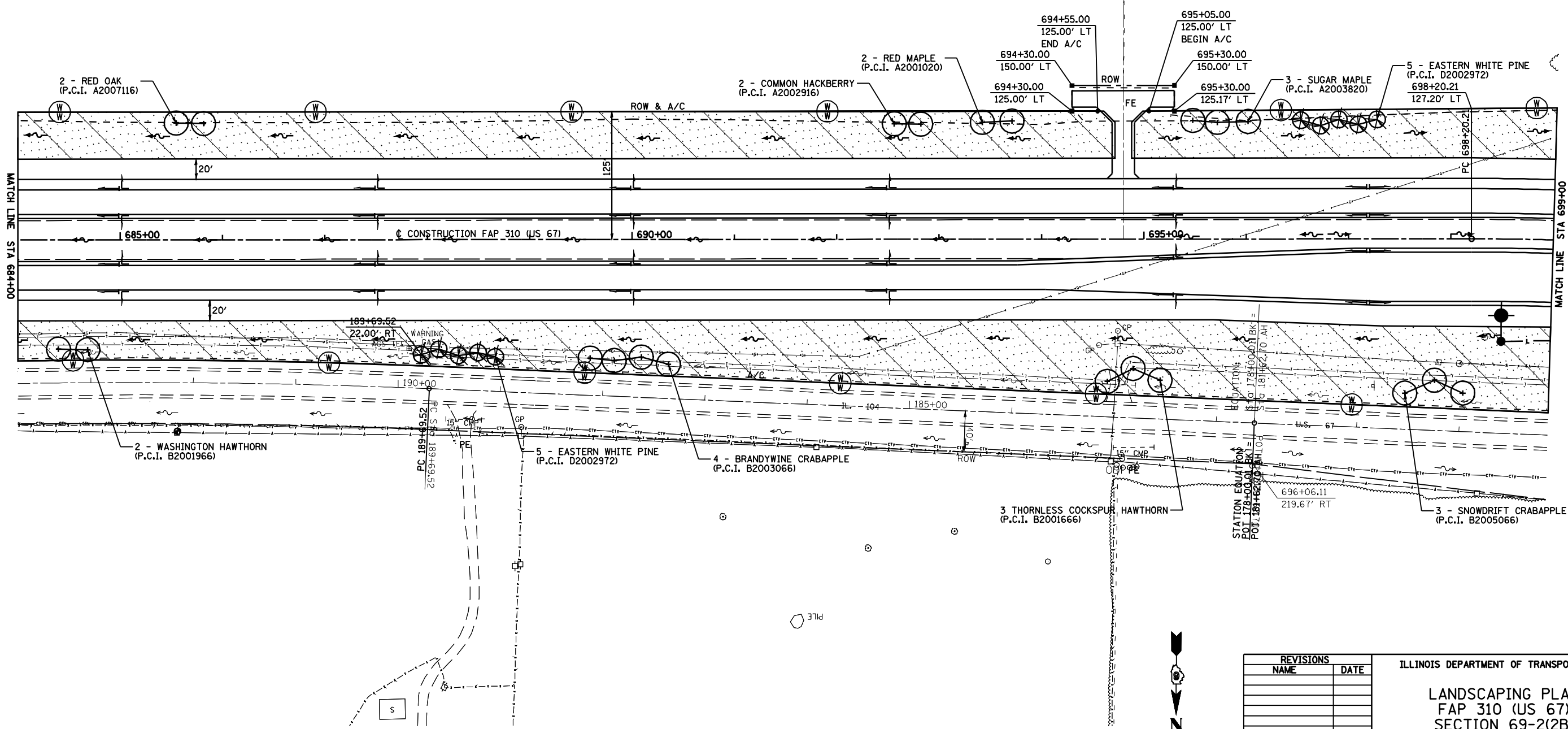
DRAWN BY _____
 CHECKED BY _____

NOTE: ALL PLANTS TO BE PLANTED
 MINIMUM 10' FROM EDGE ROW

F.A.P. RTE.	SECTION	COUNTY	TOTAL SHEETS	SHEET NO.
310	69-2LS	MORGAN	16	8
STA.		TO STA.		
FED. ROAD DIST. NO.		ILLINOIS	FED. AID PROJECT	

SEEDING LEGEND

 PROPOSED SEEDING CLASS 4 (MODIFIED)



REVISIONS	
NAME	DATE

ILLINOIS DEPARTMENT OF TRANSPORTATION
LANDSCAPING PLAN
 FAP 310 (US 67)
 SECTION 69-2(B)
 MORGAN COUNTY

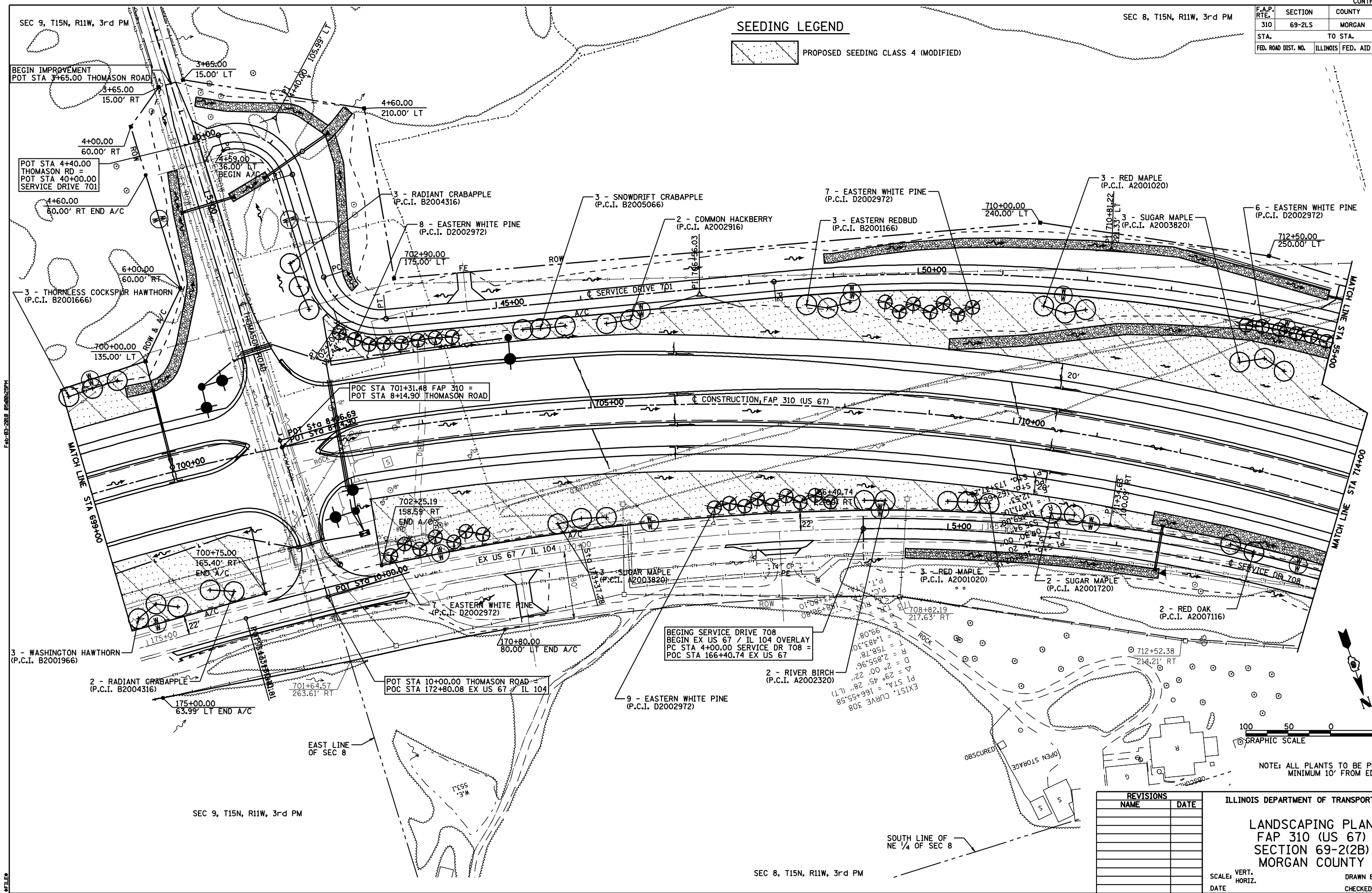
SCALE: VERT. _____
 HORIZ. _____
 DATE _____

DRAWN BY _____
 CHECKED BY _____

F.A.P. RTE.	SECTION	COUNTY	TOTAL SHEETS	SHEET NO.
310	69-2LS	MORGAN	16	9
STA.		TO STA.		
FED. ROAD DIST. NO.		ILLINOIS FED. AID PROJECT		

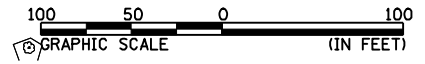
SEEDING LEGEND

PROPOSED SEEDING CLASS 4 (MODIFIED)



Feb-03-2018 05:00:25PM

FILED



NOTE: ALL PLANTS TO BE PLANTED MINIMUM 10' FROM EDGE ROW

REVISIONS	
NAME	DATE

ILLINOIS DEPARTMENT OF TRANSPORTATION

LANDSCAPING PLAN
FAP 310 (US 67)
SECTION 69-2(B)
MORGAN COUNTY

SCALE: VERT. _____
 HORIZ. _____
 DATE _____

DRAWN BY _____
 CHECKED BY _____

SEC 9, T15N, R11W, 3rd PM


SEC 9, T15N, R11W, 3rd PM

SEC 8, T15N, R11W, 3rd PM

FAP 310 STA 699+00 TO STA 714+00

F.A.P. RTE.	SECTION	COUNTY	TOTAL SHEETS	SHEET NO.
310	69-2LS	MORGAN	16	10
STA. 714+00		TO STA. 729+00		
FED. ROAD DIST. NO.	ILLINOIS	FED. AID PROJECT		

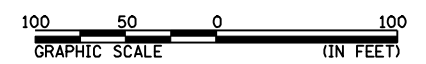
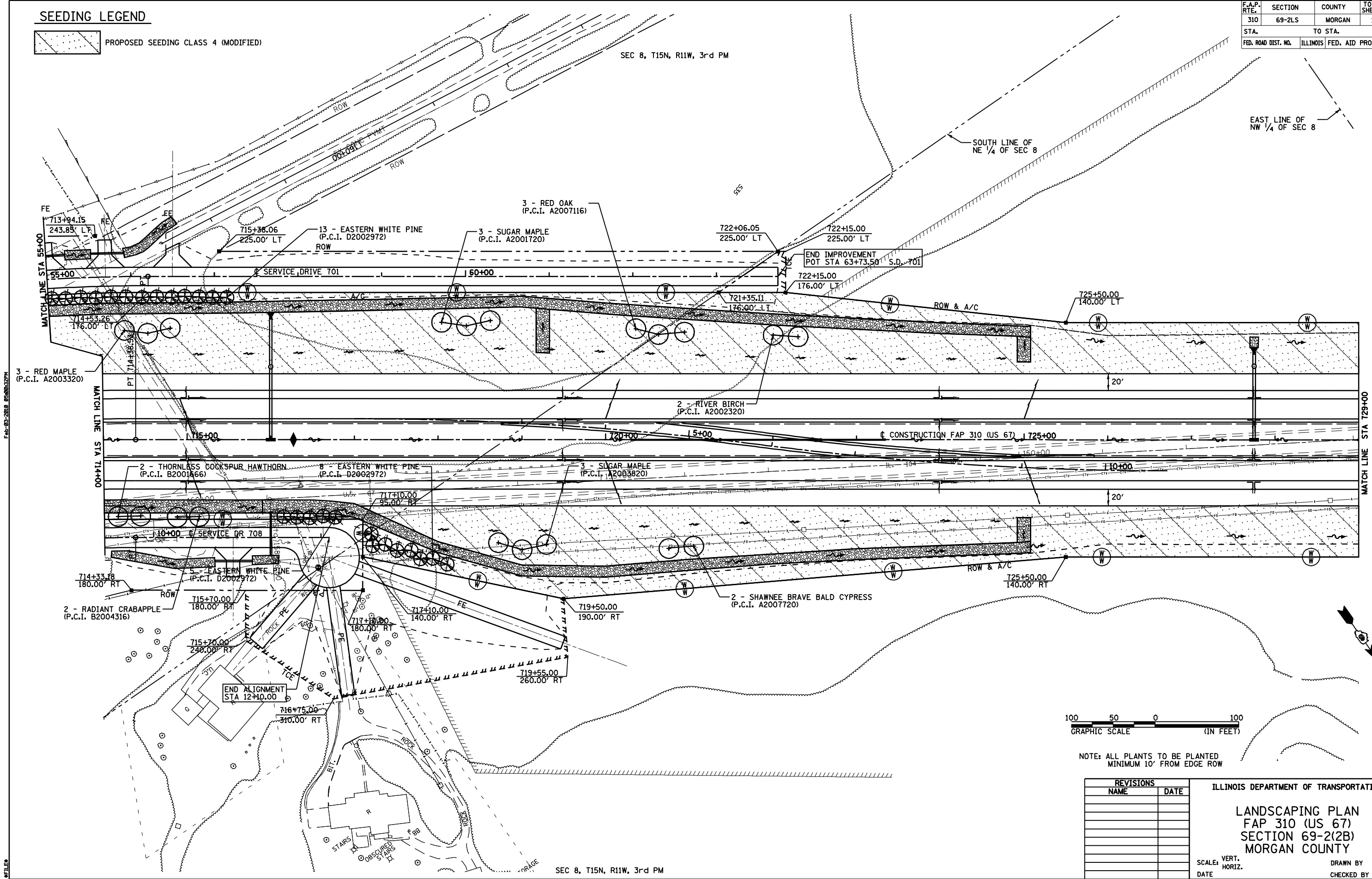
SEEDING LEGEND

 PROPOSED SEEDING CLASS 4 (MODIFIED)

SEC 8, T15N, R11W, 3rd PM

EAST LINE OF NW 1/4 OF SEC 8

SOUTH LINE OF NE 1/4 OF SEC 8



NOTE: ALL PLANTS TO BE PLANTED MINIMUM 10' FROM EDGE ROW

REVISIONS	
NAME	DATE

ILLINOIS DEPARTMENT OF TRANSPORTATION

LANDSCAPING PLAN
FAP 310 (US 67)
SECTION 69-2(2B)
MORGAN COUNTY

SCALE: VERT. _____
 HORIZ. _____


DRAWN BY _____
 CHECKED BY _____

SEC 8, T15N, R11W, 3rd PM

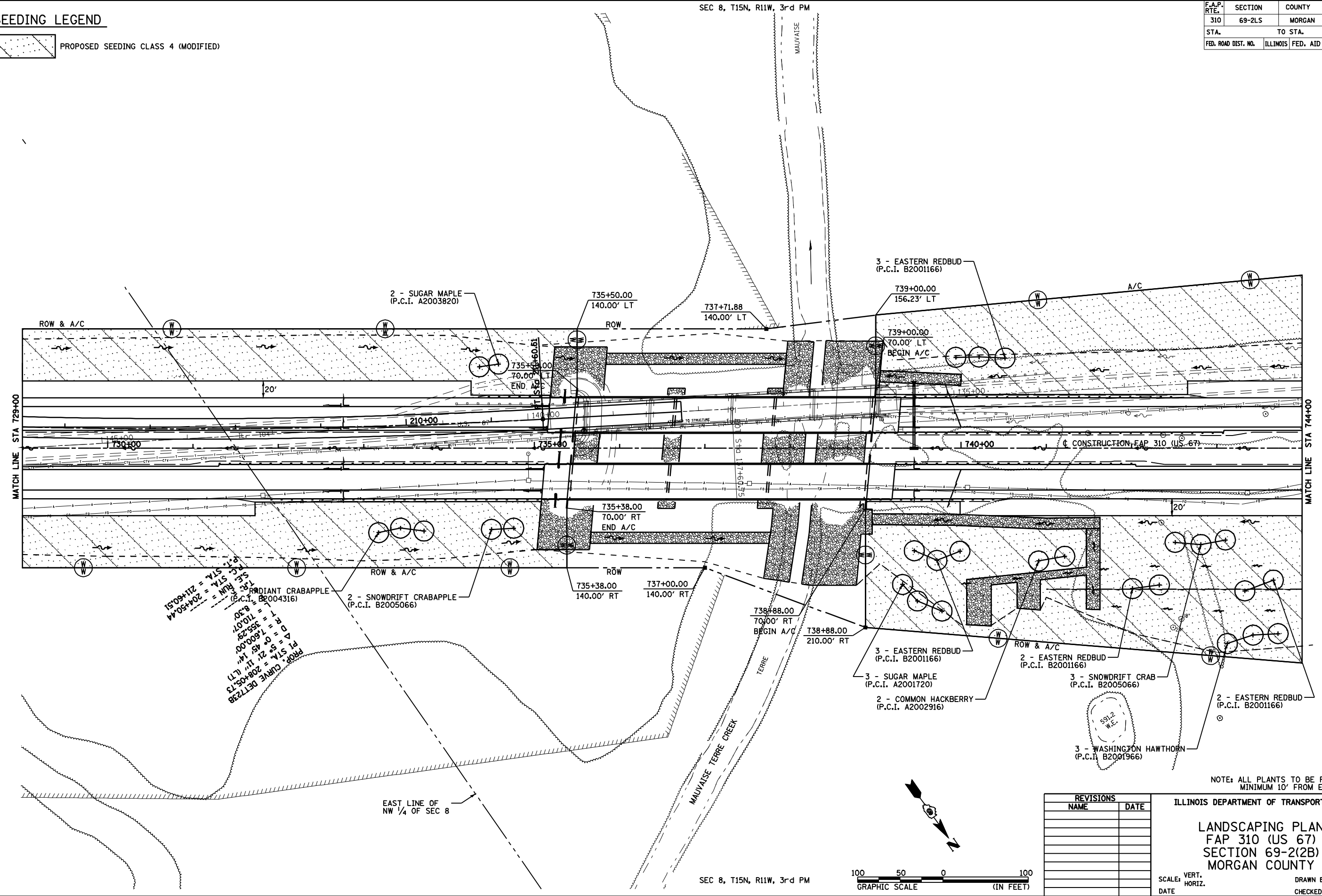
FAP 310 STA 714+00 TO STA 729+00

F.A.P. RTE.	SECTION	COUNTY	TOTAL SHEETS	SHEET NO.
310	69-2LS	MORGAN	16	11
STA.		TO STA.		
FED. ROAD DIST. NO.		ILLINOIS	FED. AID PROJECT	

SEEDING LEGEND

 PROPOSED SEEDING CLASS 4 (MODIFIED)

SEC 8, T15N, R11W, 3rd PM



PROP. CURVE DATA
 P.I. STA. = 208+405.73
 P.C. STA. = 208+00.00
 P.T. STA. = 208+811.46
 R = 7600.00'
 Δ = 92° 21' 14" (LT)
 L = 140.07'
 S.E. RUM = 710.07'
 S.E. STA. = 204+504.4
 S.E. STA. = 211+601.51
 S.E. STA. = 204+504.4
 S.E. STA. = 211+601.51

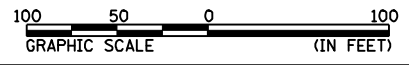
NOTE: ALL PLANTS TO BE PLANTED MINIMUM 10' FROM EDGE ROW

REVISIONS	
NAME	DATE

ILLINOIS DEPARTMENT OF TRANSPORTATION
 LANDSCAPING PLAN
 FAP 310 (US 67)
 SECTION 69-2(B)
 MORGAN COUNTY

SCALE: VERT. _____
 HORIZ. _____
 DATE _____

DRAWN BY _____
 CHECKED BY _____

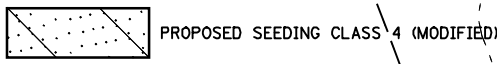


FILED

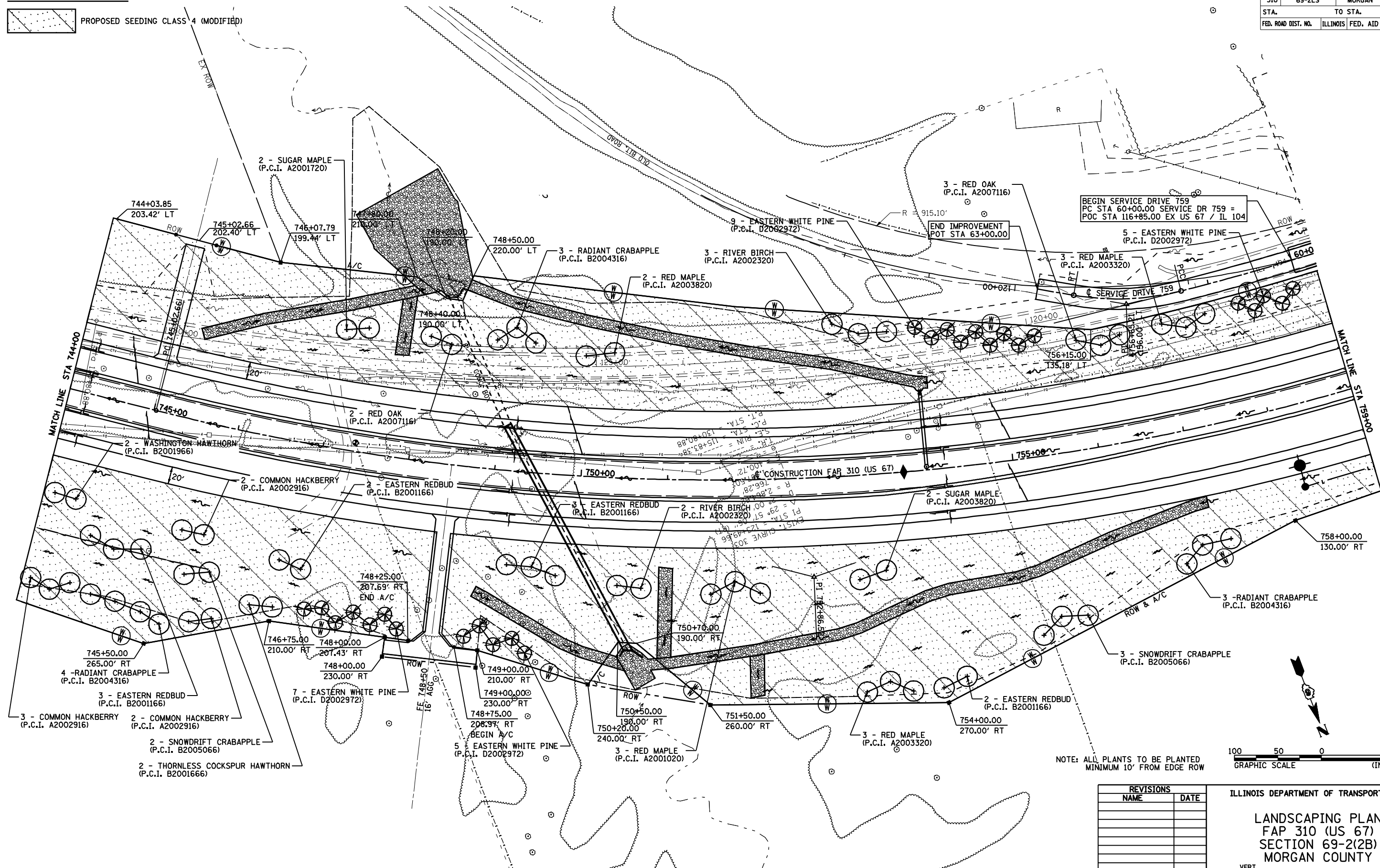
FILED

F.A.P. RTE.	SECTION	COUNTY	TOTAL SHEETS	SHEET NO.
310	69-2LS	MORGAN	16	12
STA.		TO STA.		
FED. ROAD DIST. NO.		ILLINOIS FED. AID PROJECT		

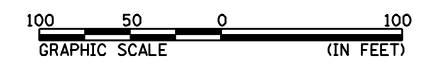
SEEDING LEGEND



SEC 8, T15N, R11W, 3rd PM



NOTE: ALL PLANTS TO BE PLANTED MINIMUM 10' FROM EDGE ROW



REVISIONS	
NAME	DATE

ILLINOIS DEPARTMENT OF TRANSPORTATION

LANDSCAPING PLAN
 FAP 310 (US 67)
 SECTION 69-2(B)
 MORGAN COUNTY

SCALE: VERT. _____
 HORIZ. _____

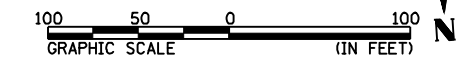
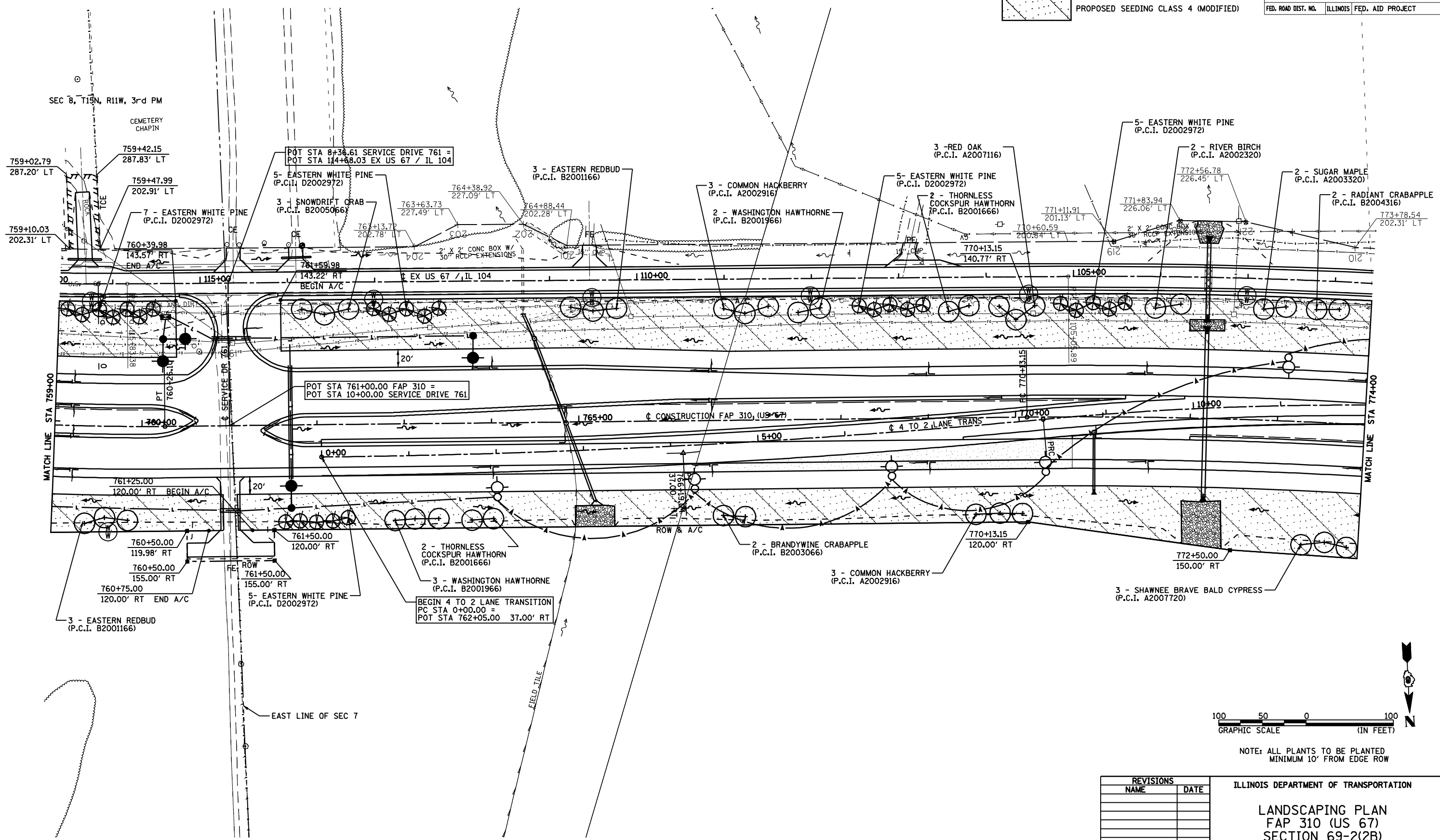
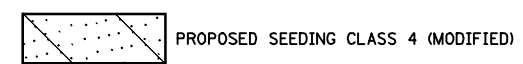
DATE _____ DRAWN BY _____
 CHECKED BY _____

FAP 310 STA 744+00 TO STA 759+00

SEC 8, T15N, R11W, 3rd PM

SEEDING LEGEND

F.A.P. RTE.	SECTION	COUNTY	TOTAL SHEETS	SHEET NO.
310	69-2LS	MORGAN	16	13
STA.		TO STA.		
FED. ROAD DIST. NO.		ILLINOIS	FED. AID PROJECT	



NOTE: ALL PLANTS TO BE PLANTED MINIMUM 10' FROM EDGE ROW

REVISIONS	
NAME	DATE

ILLINOIS DEPARTMENT OF TRANSPORTATION
 LANDSCAPING PLAN
 FAP 310 (US 67)
 SECTION 69-2(2B)
 MORGAN COUNTY
 SCALE: VERT. _____
 DATE _____ HORIZ. _____
 DRAWN BY _____
 CHECKED BY _____

SEC 8, T15N, R11W, 3rd PM

SEC 8, T15N, R11W, 3rd PM

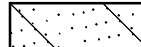
SEC 7, T15N, R11W, 3rd PM

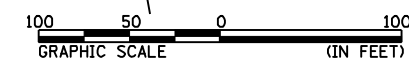
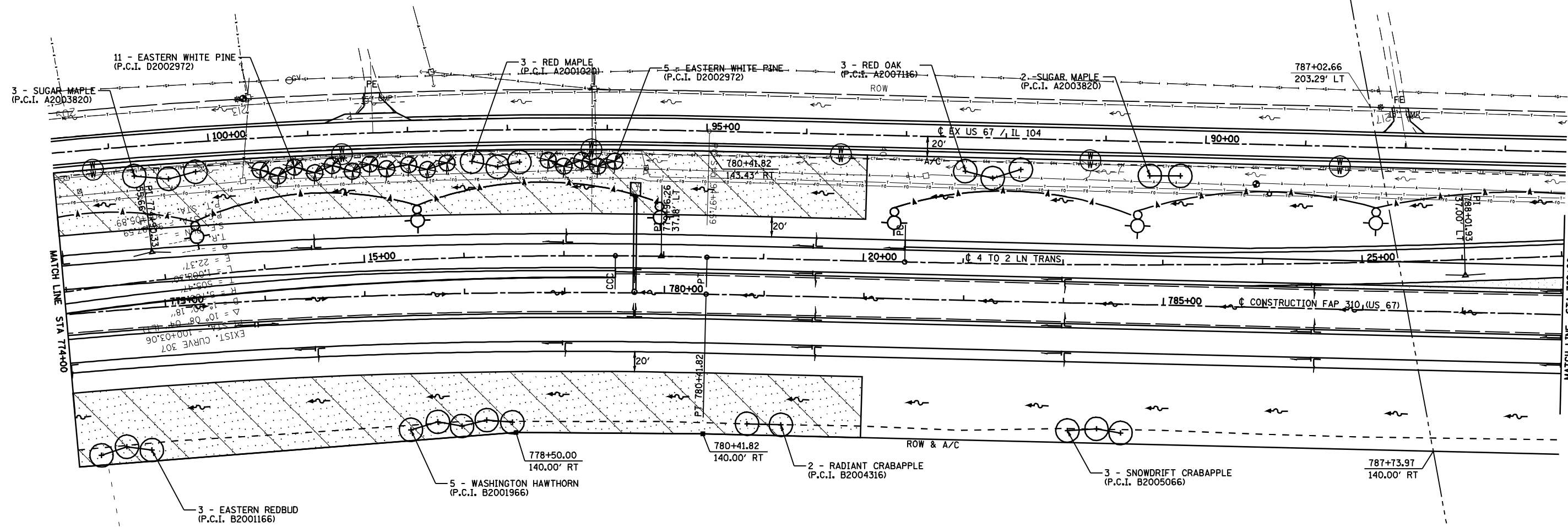
FAP 310 STA 759+00 TO STA 774+00

FAP 310 STA 759+00 TO STA 774+00

F.A.P. RTE.	SECTION	COUNTY	TOTAL SHEETS	SHEET NO.
310	69-2LS	MORGAN	16	14
STA.		TO STA.		
FED. ROAD DIST. NO.		ILLINOIS FED. AID PROJECT		

SEEDING LEGEND

 PROPOSED SEEDING CLASS 4 (MODIFIED)



NOTE: ALL PLANTS TO BE PLANTED MINIMUM 10' FROM EDGE ROW

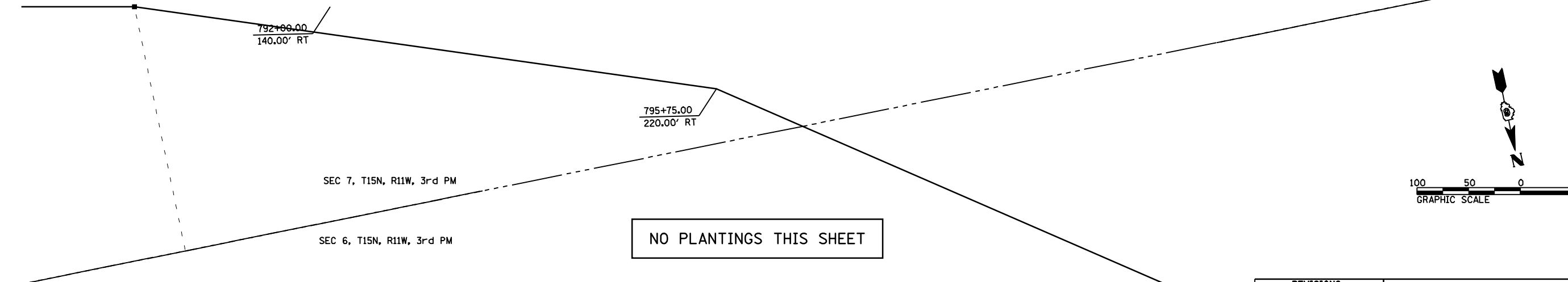
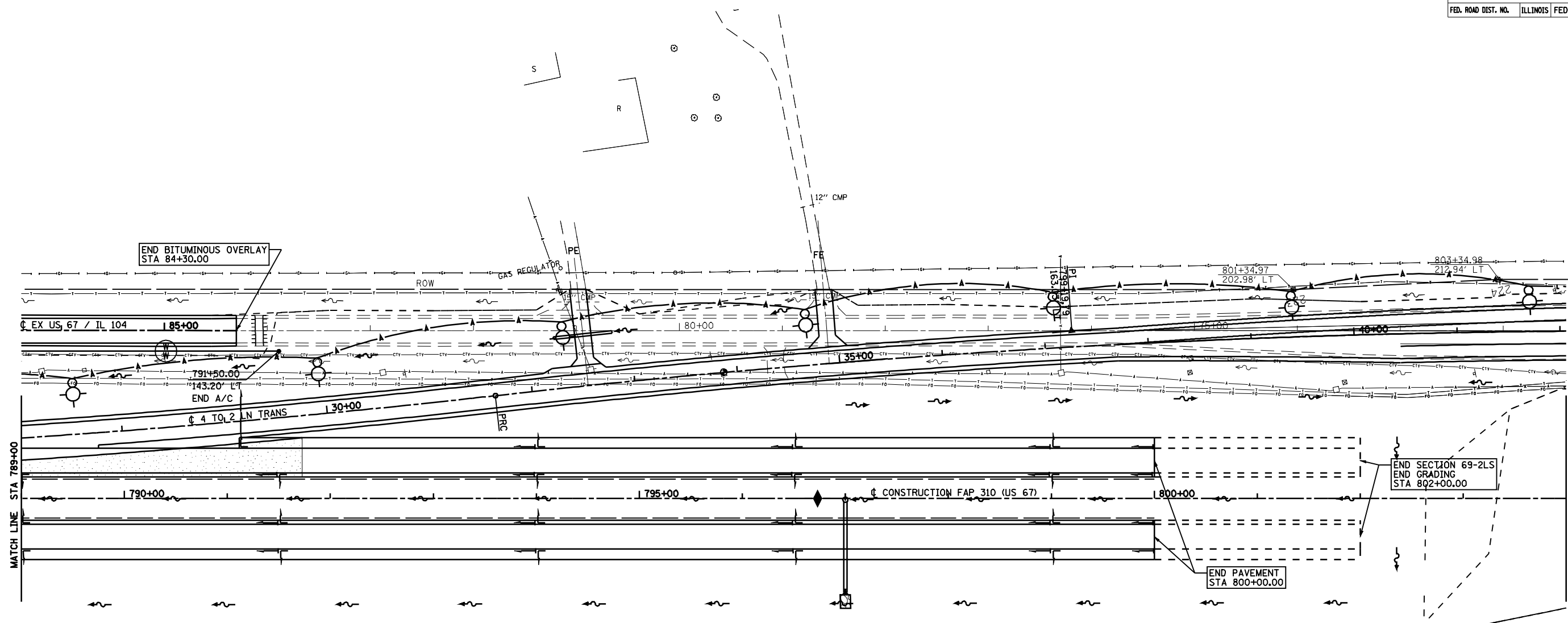
REVISIONS	
NAME	DATE

ILLINOIS DEPARTMENT OF TRANSPORTATION
 LANDSCAPING PLAN
 FAP 310 (US 67)
 SECTION 69-2(B)
 MORGAN COUNTY

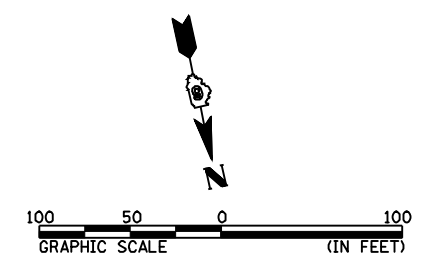
SCALE: VERT. _____
 HORIZ. _____
 DATE _____ DRAWN BY _____
 CHECKED BY _____

F.A.P. RTE.	SECTION	COUNTY	TOTAL SHEETS	SHEET NO.
310	69-2LS	MORGAN	16	15
STA.		TO STA.		
FED. ROAD DIST. NO.	ILLINOIS	FED. AID PROJECT		

SEC 7, T15N, R11W, 3rd PM



NO PLANTINGS THIS SHEET



REVISIONS		DATE	DRAWN BY	CHECKED BY
NAME				

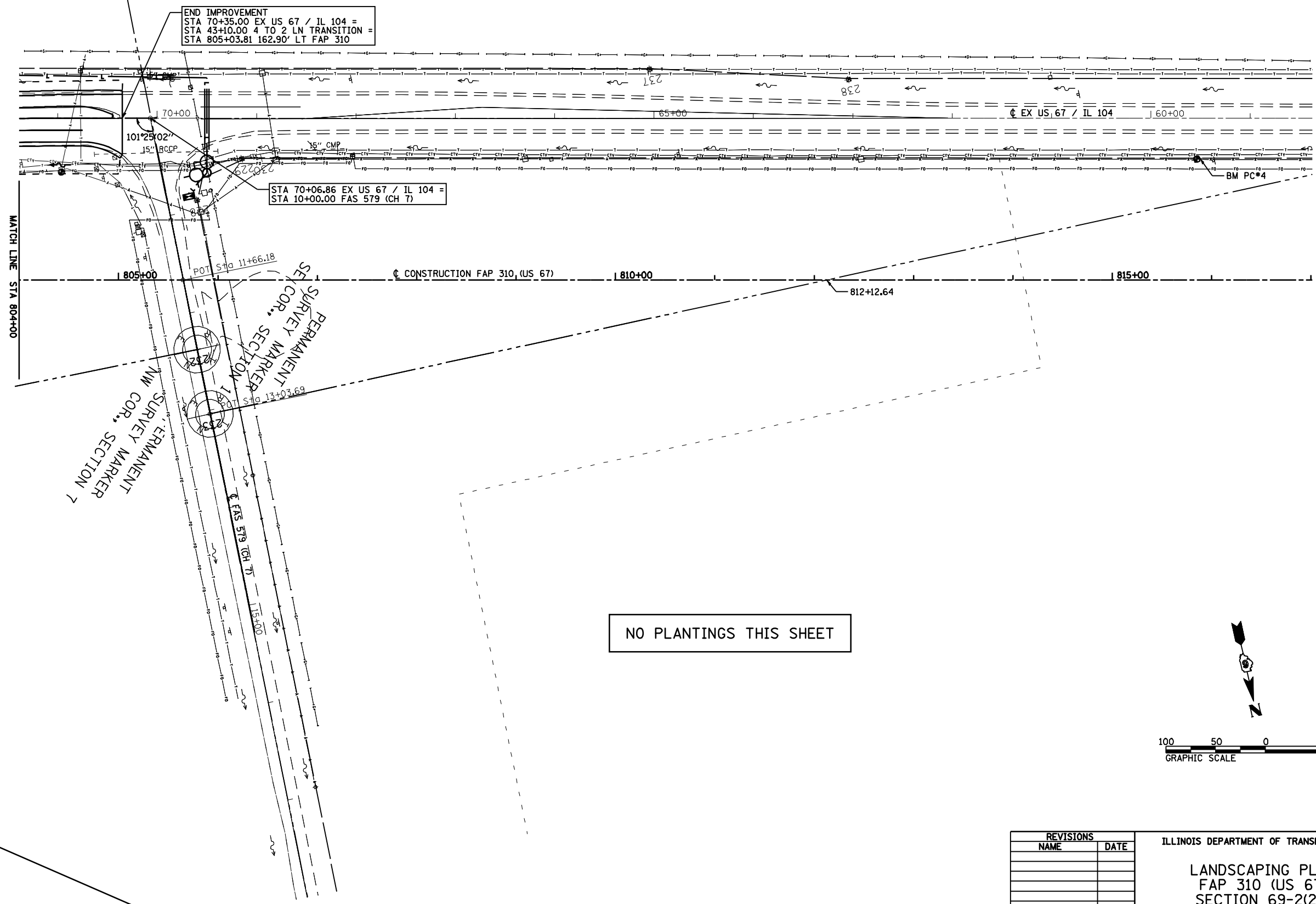
ILLINOIS DEPARTMENT OF TRANSPORTATION
 LANDSCAPING PLAN
 FAP 310 (US 67)
 SECTION 69-2(B)
 MORGAN COUNTY
 SCALE: VERT. _____
 HORIZ. _____
 DATE _____

FAP 310 STA 789+00 TO STA 804+00

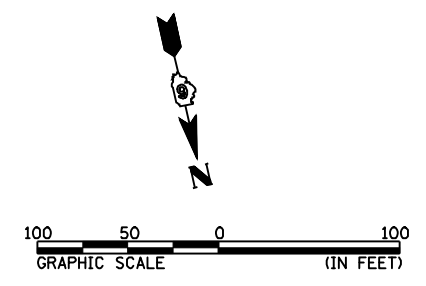
FAP 310 STA 789+00 TO STA 804+00

FAP 310 STA 789+00 TO STA 804+00

F.A.P. RTE.	SECTION	COUNTY	TOTAL SHEETS	SHEET NO.
310	69-2LS	MORGAN	16	16
STA.		TO STA.		
FED. ROAD DIST. NO.	ILLINOIS	FED. AID PROJECT		



NO PLANTINGS THIS SHEET



REVISIONS	
NAME	DATE

ILLINOIS DEPARTMENT OF TRANSPORTATION
 LANDSCAPING PLAN
 FAP 310 (US 67)
 SECTION 69-2(B)
 MORGAN COUNTY
 SCALE: VERT. _____
 HORIZ. _____
 DATE _____ DRAWN BY _____
 CHECKED BY _____

FAP 310 STA 804+00 TO STA 817+00

Feb-05-2018 08:00:33PM

FILE