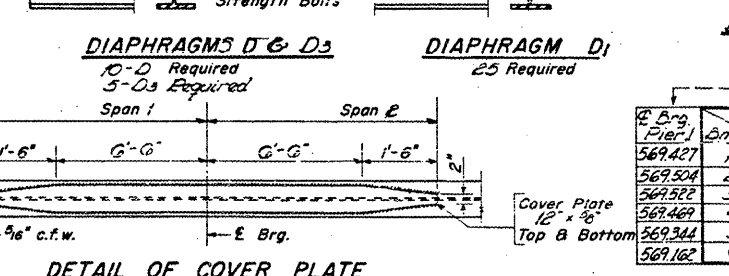
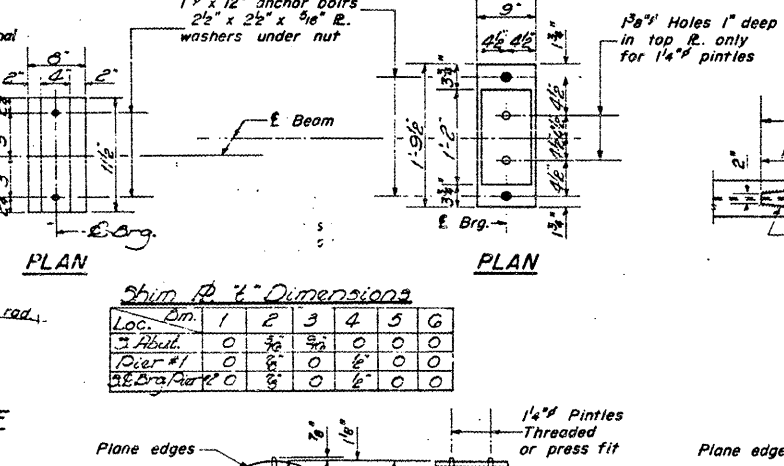
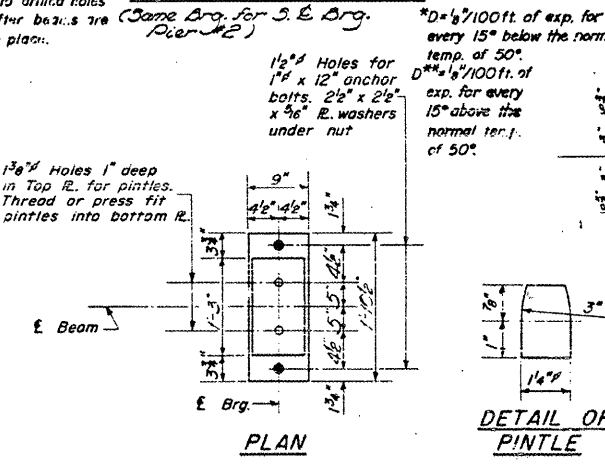
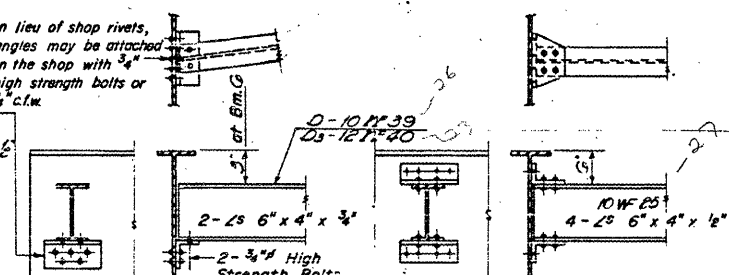
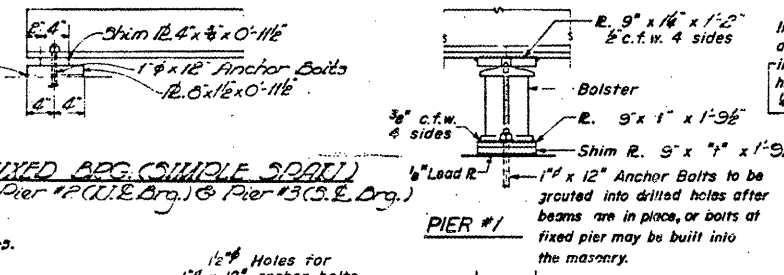
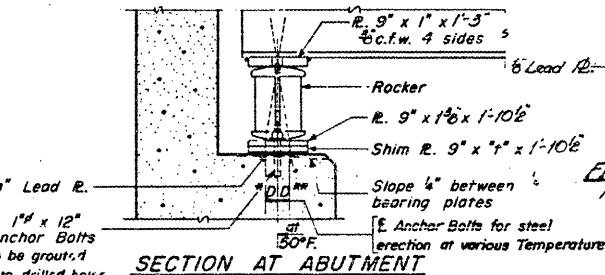
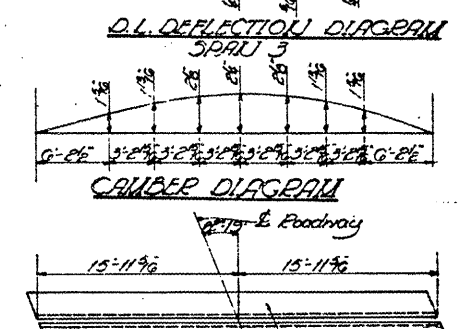
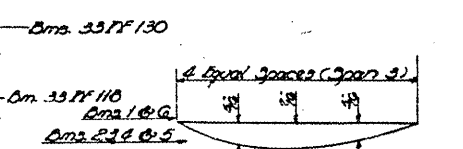


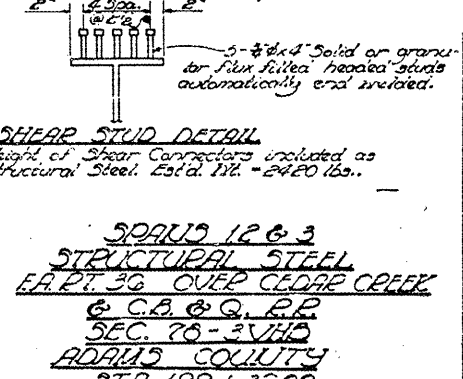
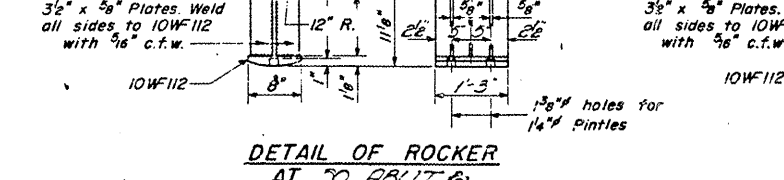
**BILL OF MATERIAL**

Item	Unit	Quantity
Structural Steel	Lbs.	170,940



Loc.	E. Org.	E. Splice	E. Org.	S.E. Org.	V.E. Org.	S.E. Org.	S.E. Org.
569427	1	570700	569700	569700	569700	569700	569700
569504	2	570000	569000	569000	569000	569000	569000
569522	3	570000	569000	569000	569000	569000	569000
569469	4	570000	569000	569000	569000	569000	569000
569344	5	570000	569000	569000	569000	569000	569000
569162	6	570000	569000	569000	569000	569000	569000

DESIGNED *Bahony Farski*  
CHECKED *R.A.H.*  
DRAWN *R. W. A. Sausman Jr.*  
APPROVED *[Signature]*



SPANS 1 & 2  
STRUCTURAL STEEL  
E.A. PT. 30 OVER CEDAR CREEK  
& C.B. & G. R.R.  
SEC. 78-3VHB  
ADAMS COUNTY  
STA. 199+36.00

I-2-C 7-2-62 Rev 11-9-62 Rev 9-16-63 Rev 12-10-63

FOR INFORMATION ONLY

EXISTING PLANS, SN 001-0011  
FAP 63 (US 24) & 310 (IL 104)  
D6REHAB BDGE PAINTING 2010-1  
ADAMS & MORGAN COUNTIES