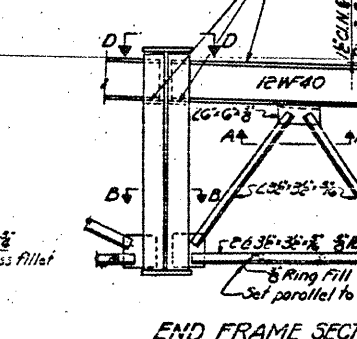
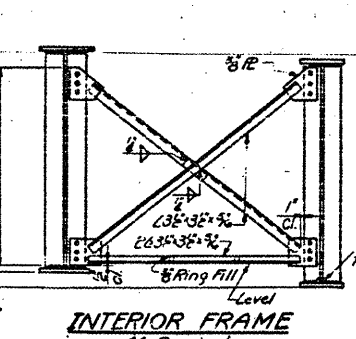
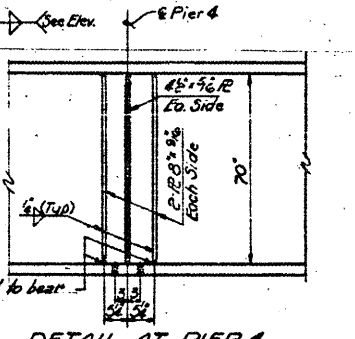
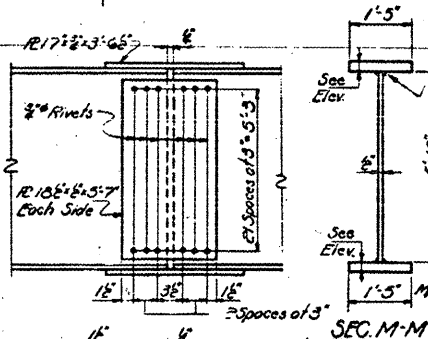
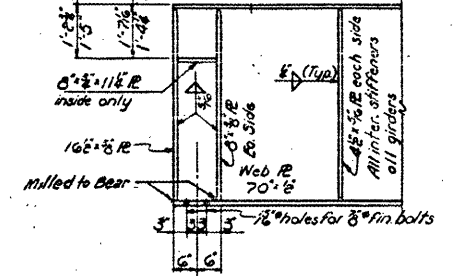
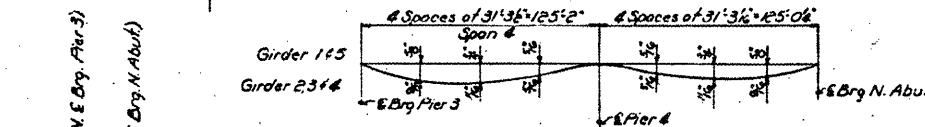
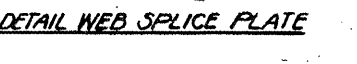
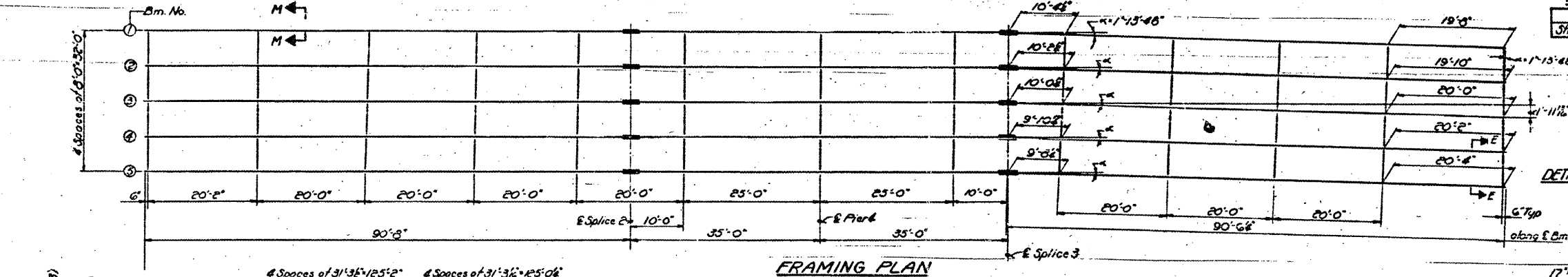


**BILL OF MATERIAL**

Item	Unit	Quantity
Structural Steel	Lbs	358,060



EXTERIOR GIRDER DETAILS AT END SUPPORTS

DETAIL FIELD SPLICE 2

DETAIL AT PIER 4

INTERIOR FRAME

END FRAME SECTION EE

DETAIL FIELD SPLICE 3

DESIGNED: *Rohrer Jurski*  
CHECKED: *A. Tahl. m.*  
DRAWN: *B. Jurski*  
CHECKED: *B. J. A.V.M.*

EXAMINED: *H. B. ...*  
PERMITS: *...*  
APPROVED: *...*

TYPICAL BUTT WELD WEB SPLICE

TYPICAL BUTT WELD FLG.

INTERIOR GIRDERS END SUPPORTS

SECTION B-B

SECTION C-C

**TOP OF GIRDER ELEVATIONS**

Girder	Pier 3	Splice 1	Pier 4	Splice 2	N. Abut.
1	566.688	567.241	563.298	562.851	563.404
2	566.688	567.241	563.298	562.851	563.404
3	566.688	567.241	563.298	562.851	563.404
4	566.688	567.241	563.298	562.851	563.404
5	566.688	567.241	563.298	562.851	563.404

STRUCTURAL STEEL SPANS 415  
F.A.36 OVER CEDAR CREEK &  
G.B. F.O.R.R. SEC. 78-3VNB  
ADAMS COUNTY  
STA. 199+36+00

EXISTING PLANS, SN 001-0011  
FAP 63 (US 24) & 310 (IL 104)  
D6REHAB BDGE PAINTING 2010-1  
ADAMS & MORGAN COUNTIES

FOR INFORMATION ONLY