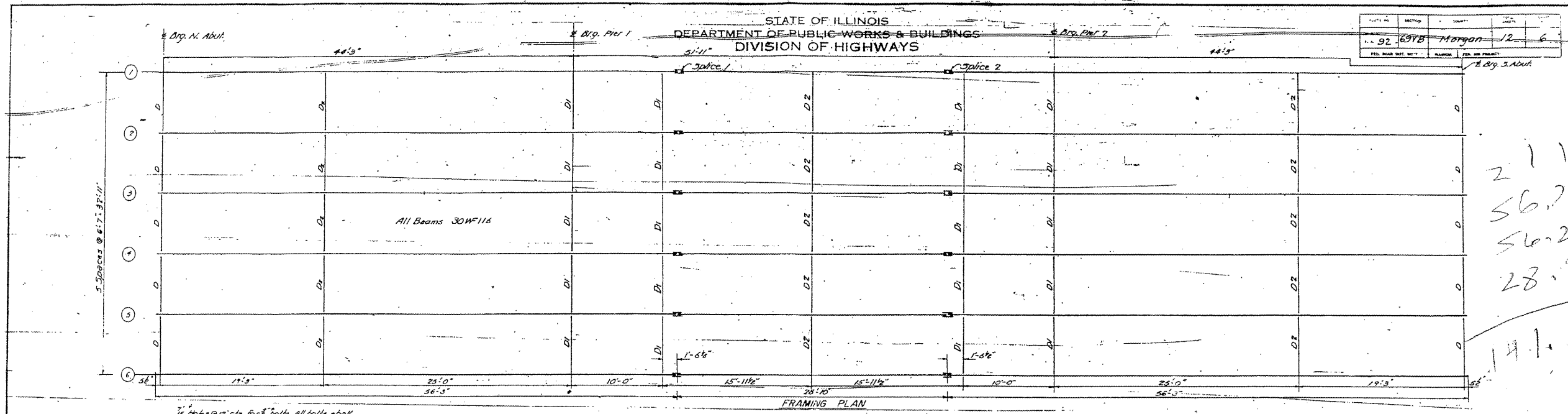
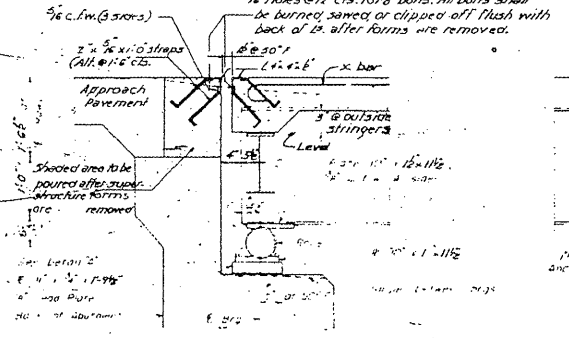


STATE OF ILLINOIS
DEPARTMENT OF PUBLIC WORKS & BUILDINGS
DIVISION OF HIGHWAYS

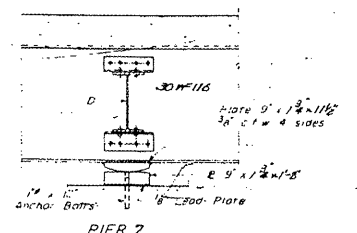
DATE	BY	CHKD	APP'D
92	BYB	Morgan	12
REV. NO.		REV. BY	REV. DATE



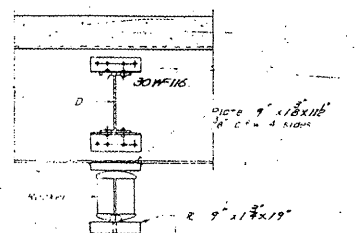
211
56.75
56.25
28.82
141.3²



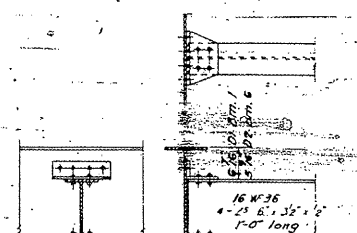
SECTION AT ABUTMENT



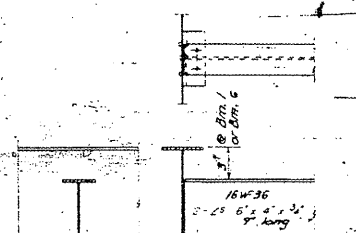
PIER 2



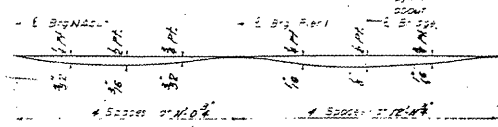
PIER 1



DIAPHRAGM D1 & D2



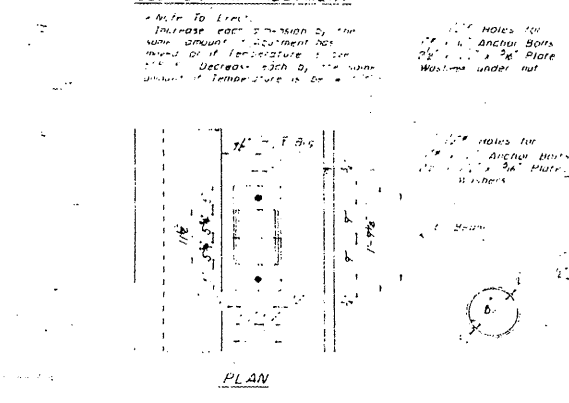
DIAPHRAGM D



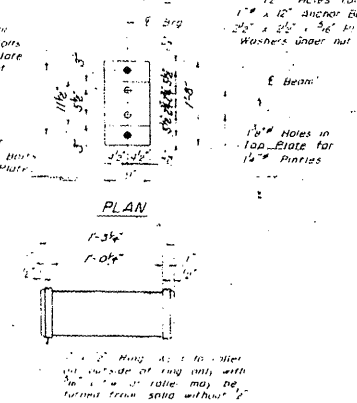
DEAD LOAD DEFLECTION DIAGRAM
Weights of structural steel not included

Beam	At Abut.	Splice 1	Splice 2	At Abut.
1	638.16	638.27	638.35	638.16
2	638.27	638.31	638.31	638.27
3	638.35	638.38	638.38	638.35
4	638.35	638.38	638.38	638.35
5	638.27	638.31	638.31	638.27
6	638.16	638.27	638.27	638.16

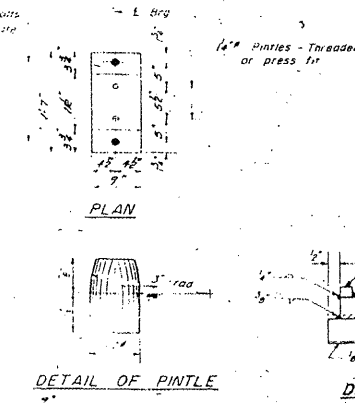
ELEVATION TOP OF BEAMS



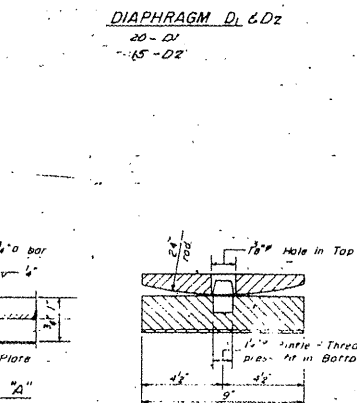
PLAN



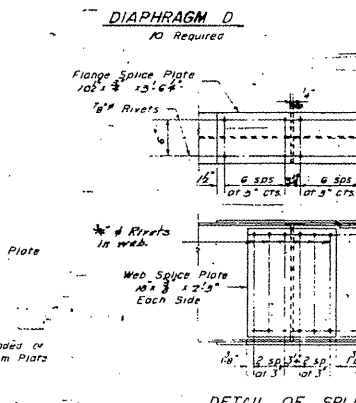
PLAN



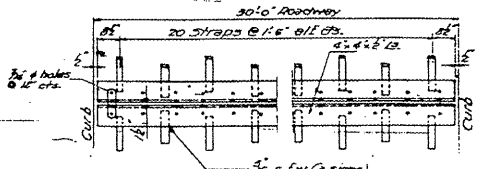
PLAN



DETAIL OF PINTLE



DETAIL OF BEARING AT PIER 2

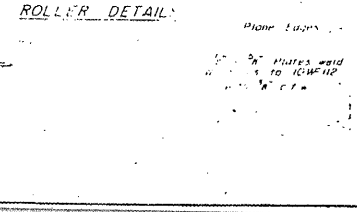


PLAN OF EXPANSION GUARD

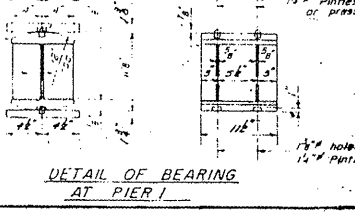


STRAP DETAIL

DESIGNED BY: [Signature]
CHECKED BY: [Signature]
DATE: Nov. 22, 1957
APPROVED BY: [Signature]



ROLLER DETAIL



DETAIL OF BEARING AT PIER 1

STRUCTURAL STEEL DETAILS
F.A.R.T. 92-SEC. 69-V5
BRIDGE OVER WABASH R.R.
MORGAN COUNTY
STA. 45+54.7

FOR INFORMATION ONLY

EXISTING PLANS, SN 069-0019
FAP 63 (US 24) & 310 (IL 104)
D6REHAB BDGE PAINTING 2010-1
ADAMS & MORGAN COUNTIES