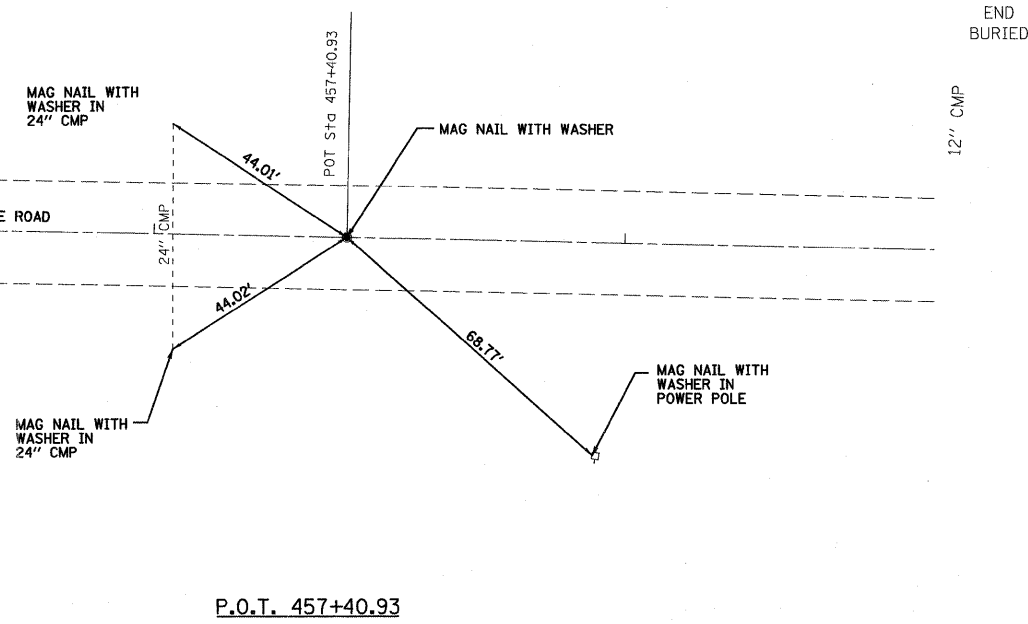
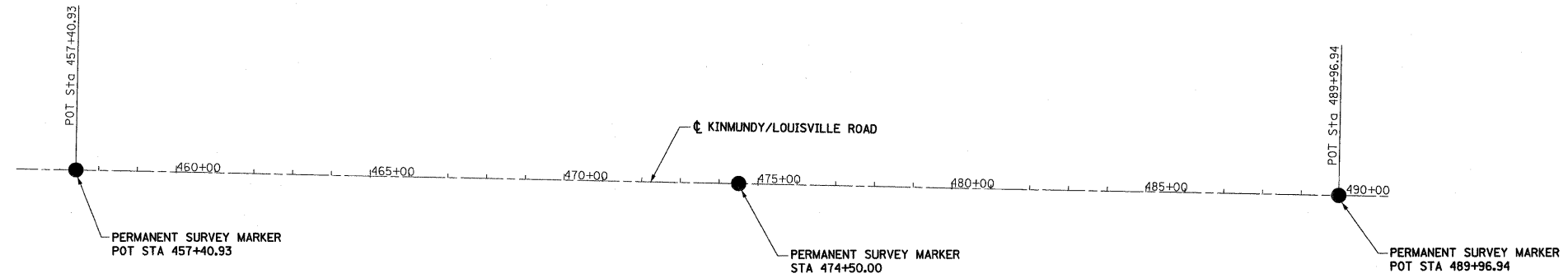


GRID COORDINATES FOR KIN-LOU ROAD

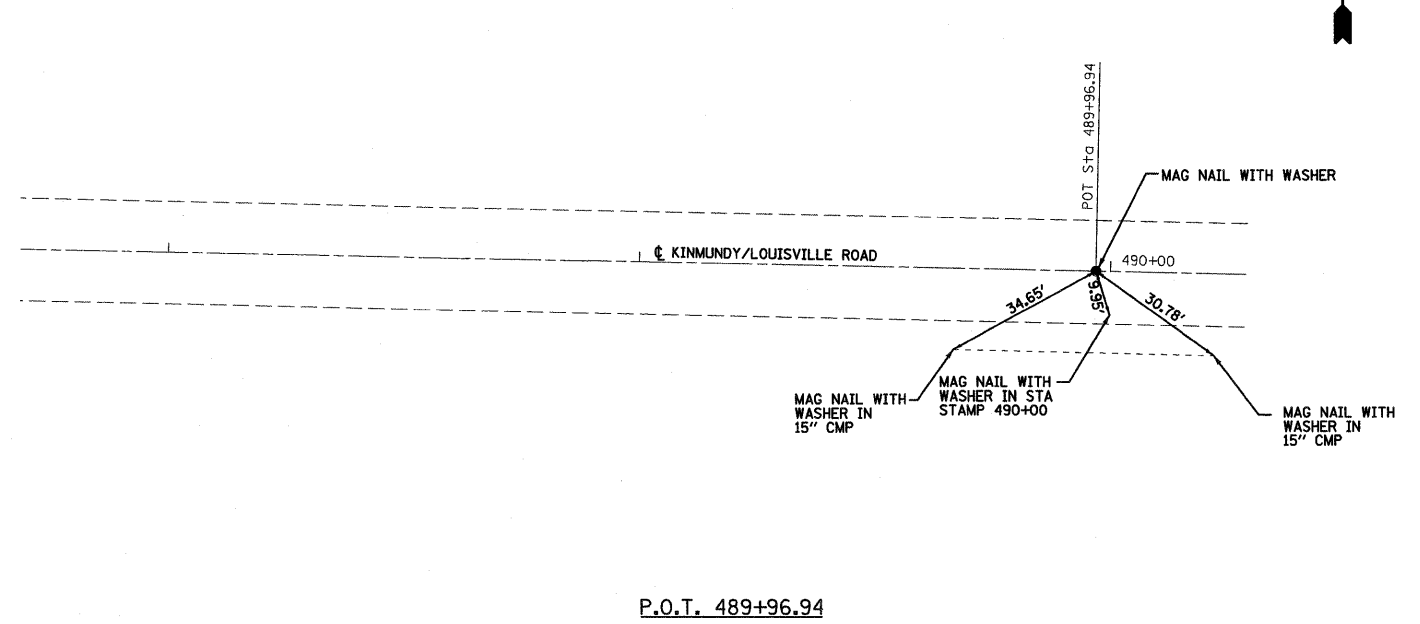
DESCRIPTION	COORDINATE	
	NORTHING	EASTING
POT STA 457+40.93	765217.99	882569.21
POT STA 489+96.94	765152.31	885824.56

GROUND COORDINATES FOR KINMUNDY/LOUISVILLE ROAD
PERMANENT SURVEY MARKERS

DESCRIPTION	COORDINATE	
	NORTHING	EASTING
POT STA 457+40.93	765217.99	882569.21
STA 474+50.00	765183.51	884277.93
POT STA 489+96.94	765152.31	885824.56



P.O.T. 457+40.93



P.O.T. 489+96.94

FILE NAME =	USER NAME = jennif	DESIGNED - JLS	REVISED -	STATE OF ILLINOIS DEPARTMENT OF TRANSPORTATION	HORIZONTAL CONTROL, KINMUNDY/LOUISVILLE ROAD		F.A.S. RTE.	SECTION	COUNTY	TOTAL SHEETS	SHEET NO.
50\project\07-088 RD Dist 7 Kinmundy over 12R1d\p1a.plt	PLOT SCALE = 20.0000' / IN.	DRAWN - MAB	REVISED -				2703	(9-VBR)B	CLAY	65	8
PLOT DATE = 12/31/2008	CHECKED - BRM	REVISIED -	REVISED -		CONTRACT NO. 74136						
	DATE - 4-04-08	REVISED -	REVISED -		FED. ROAD DIST. NO.	ILLINOIS FED. AID PROJECT					
					SCALE: 1"=20'	SHEET NO. 1 OF 2 SHEETS	STA.	TO STA.			