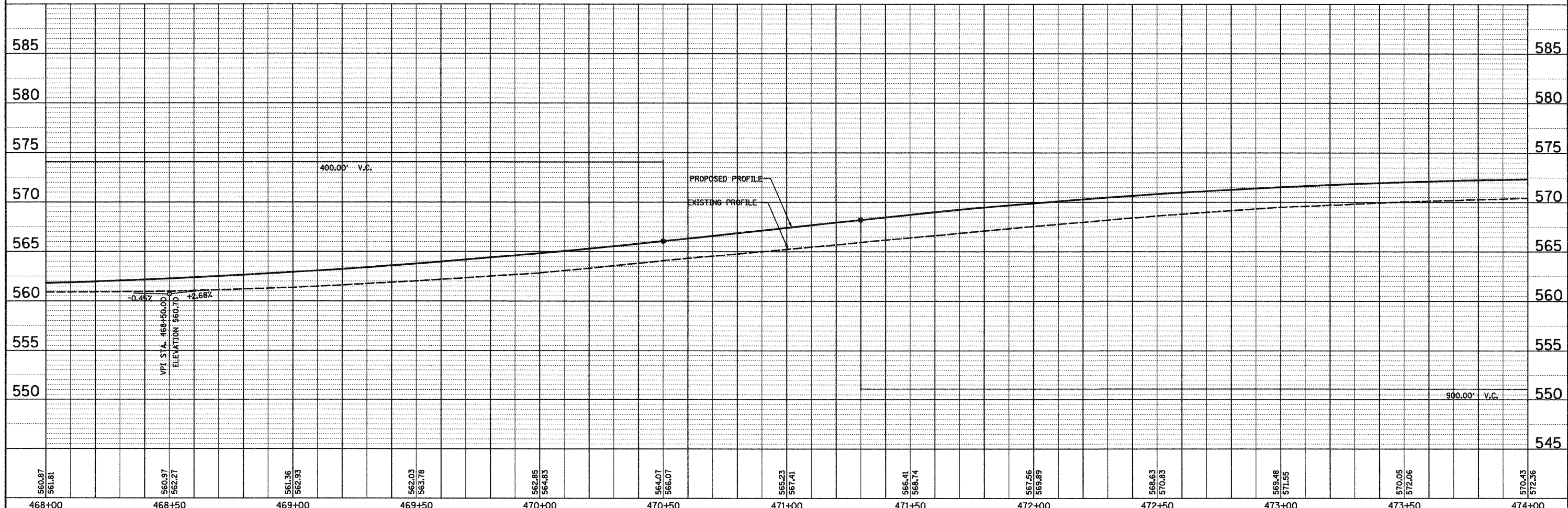
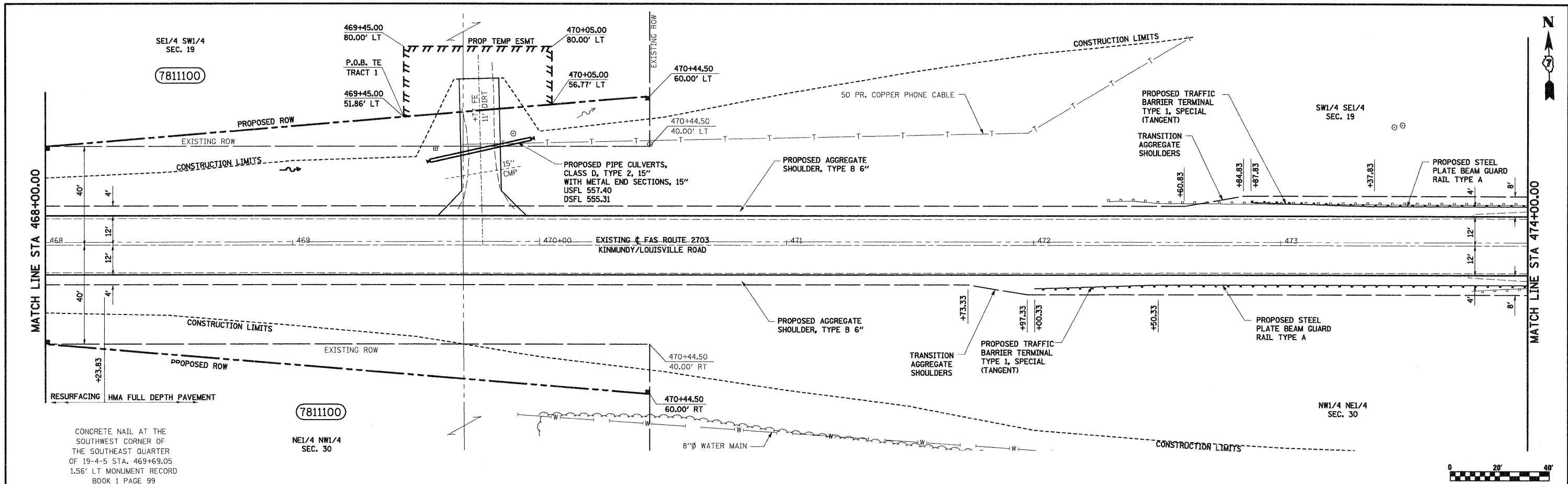


PLAN	SURVEYED	DATE
	PLOTTED	BY
	GRADES CHECKED	
	STRUCTURE NOTATIONS CHECKED	
	NO.	

PROFILE	SURVEYED	DATE
	PLOTTED	BY
	GRADES CHECKED	
	STRUCTURE NOTATIONS CHECKED	
	NO.	



FILE NAME =	USER NAME = paul	DESIGNED - JLS	REVISED -	STATE OF ILLINOIS DEPARTMENT OF TRANSPORTATION	PLAN AND PROFILE, KINMUNDY/LOUISVILLE ROAD	F.A.S. RTE. 2703	SECTION (9-VBR)B	COUNTY CLAY	TOTAL SHEETS 65	SHEET NO. 11	CONTRACT NO. 74136
PLOT SCALE = 20.000' / IN.	CHECKED - BRM	REVISED -	SCALE: 1"=20'			SHEET NO. 2 OF 5 SHEETS	STA. 470+50.00 TO STA. 476+00.00	FED. ROAD DIST. NO.	ILLINOIS FED. AID PROJECT		
PLOT DATE = 12/3/2008	DATE = 4-08-08	REVISED -									