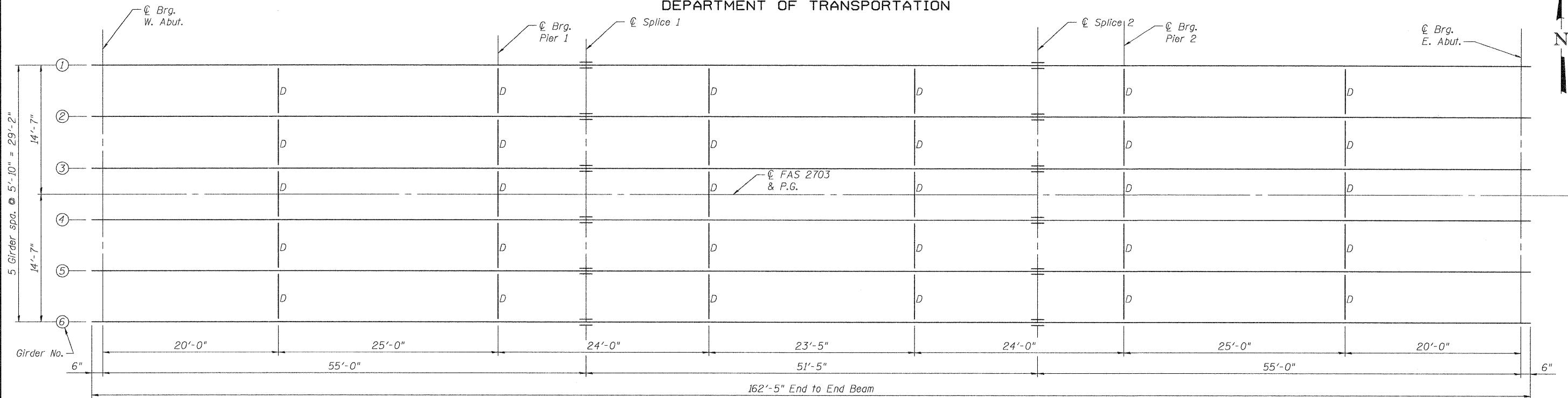
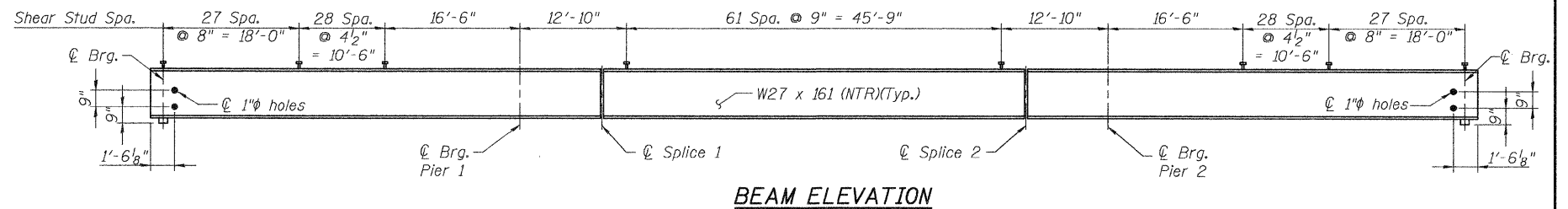


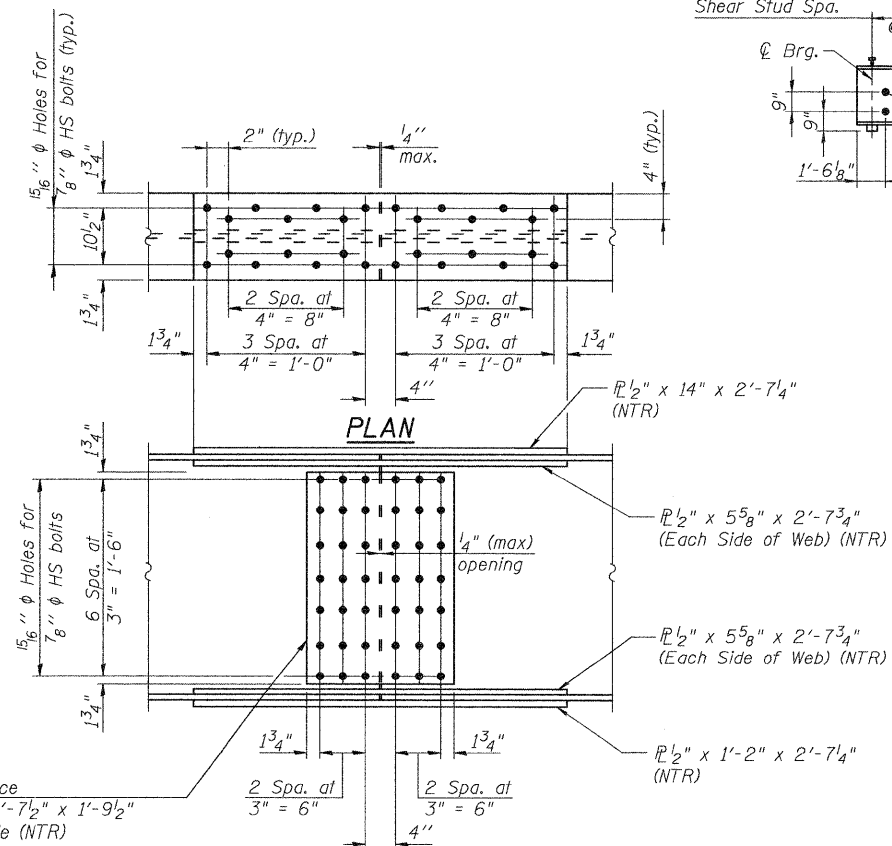
STATE OF ILLINOIS
DEPARTMENT OF TRANSPORTATION



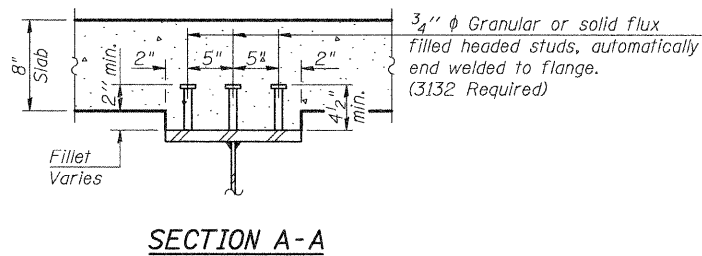
FRAMING PLAN



BEAM ELEVATION



SPLICE DETAIL
(12 Required)



SECTION A-A

* TOP OF BEAM ELEVATIONS

Location	☉ Brg. W. Abut.	☉ Pier 1	☉ Splice 1	☉ Splice 2	☉ Pier 2	☉ Brg. E. Abut.
Girder 1	571.47	571.18	571.11	570.74	570.61	570.01
Girder 2	571.57	571.35	571.30	570.84	570.71	570.11
Girder 3	571.67	571.45	571.40	570.94	570.81	570.21
Girder 4	571.67	571.45	571.40	570.94	570.81	570.21
Girder 5	571.57	571.35	571.30	570.84	570.71	570.11
Girder 6	571.47	571.18	571.11	570.74	570.61	570.01

* For fabrication only

Notes:
Load carrying components designated "NTR" shall conform to the Supplemental Requirements for Notch Toughness, Zone 2.
All diaphragms shall be installed as steel is erected and secured with erection pins and bolts except as otherwise noted. Individual cross frames or diaphragms at supports may be temporarily disconnected to install bearing anchor rods.
See Sheet 11 of 22 for Diaphragm Details.
See Sheet 11 of 22 for Anchor Bolt placement.

STRUCTURAL STEEL
KINMUNDY/LOUISVILLE ROAD
OVER ILLINOIS CENTRAL RR
STA. 475+50.44

DESIGNED	B.B.
CHECKED	C.J.F.
DRAWN	J.G.
CHECKED	C.J.F. & B.B.



BERNARDIN
LOCHMUELLER &
ASSOCIATES, INC.

3 Oak Drive
Maryville, IL 62962-5635
Local (618) 288-4665
Fax 618-288-4666

SHEET NO. 10 22 SHEETS	F.A.S. RTE.	SECTION	COUNTY	TOTAL SHEETS	SHEET NO.
	2703	(9-VBR)B	CLAY	65	32
SN 013-0044			CONTRACT NO. 74136		
FED. ROAD DIST. NO. 7 ILLINOIS FED. AID PROJECT					