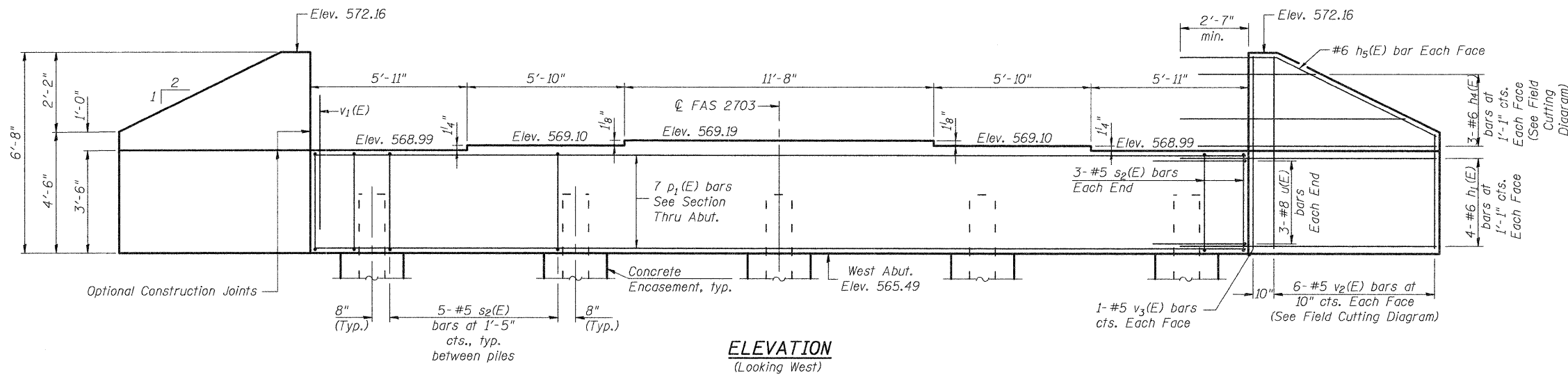
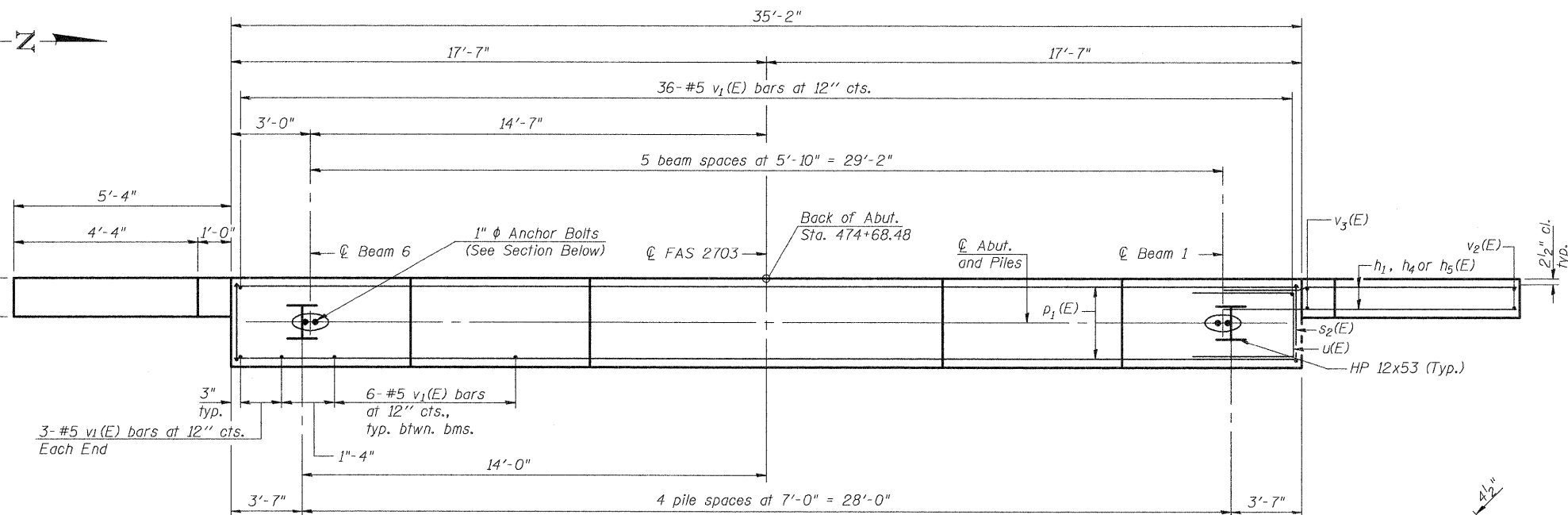
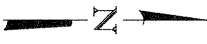


STATE OF ILLINOIS
DEPARTMENT OF TRANSPORTATION



ELEVATION
(Looking West)

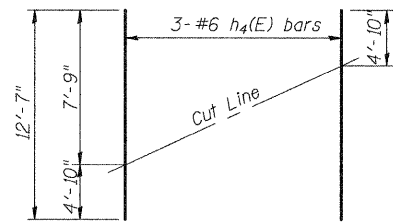


PLAN

PILE DATA

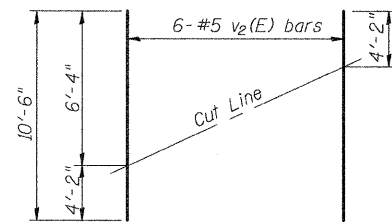
Type: HP 12x53 with Pile Shoes
Nominal Required Bearing: 419 k
Factored Resistance Available: 210 k
Est. Length: 42'-0"
No. Production Piles: 4
No. Test Piles: 1

DESIGNED	B.B.
CHECKED	C.J.F.
DRAWN	J.G.
CHECKED	C.J.F. & B.B.



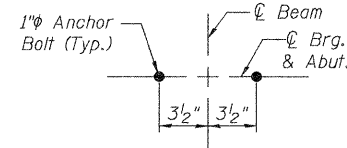
h4 FIELD CUTTING DIAGRAM

Order h4(E) full length. Cut as shown and use remainder of bars in opposite face.

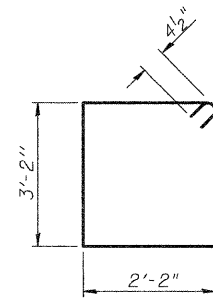


v2 FIELD CUTTING DIAGRAM

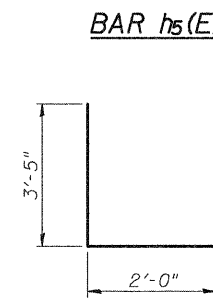
Order v2(E) full length. Cut as shown and use remainder of bars in opposite face.



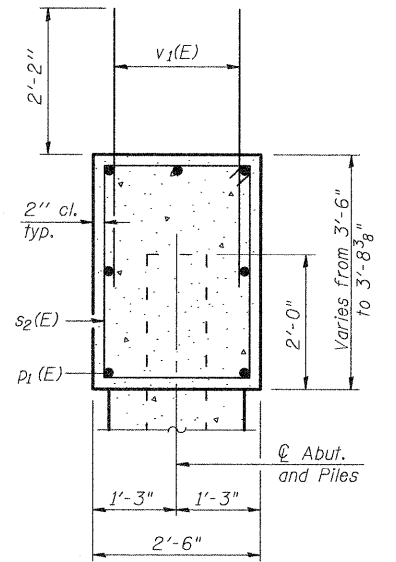
ANCHOR BOLT DETAIL



BAR s2(E)



BAR u(E)



SEC. THRU ABUT.

BILL OF MATERIAL

Bar	No.	Size	Length	Shape
h1(E)	16	#6	8'-5"	—
h4(E)	6	#6	12'-7"	—
h5(E)	4	#6	8'-3"	—
p1(E)	7	#8	34'-10"	—
s2(E)	26	#5	11'-5"	□
u(E)	6	#8	8'-10"	□
v1(E)	72	#6	4'-4"	—
v2(E)	12	#5	10'-6"	—
v3(E)	4	#5	6'-4"	—
Structure Excavation		Cu. Yd.	101.5	
Concrete Structures		Cu. Yd.	14.0	
Reinforcement Bars, Epoxy Coated		Pound	2100	
Furnishing - Steel Piles, HP 12x53		Foot	168	
Driving Piles		Foot	168	
Test Pile, HP 12x53		Each	1	
Concrete Encasement		Cu. Yd.	1.7	
Pile Shoes		Each	5	

Notes:
Pour steps monolithically with cap.
See Sheet 2 of 22 for section thru Integral Abutment showing drainage details.
For details of piles and Concrete Encasement See Sheet 19 of 22.
Space reinforcement in cap to miss anchor bolts.

WEST ABUTMENT
KINMUNDY/LOUISVILLE ROAD
OVER ILLINOIS CENTRAL RR
STA. 475+50.44



BERNARDIN
LOCHMUELLER &
ASSOCIATES, INC.

3 Oak Drive
Maryville, IL 62062-5635
Local (618) 298-4665
Fax 618-288-4668

SHEET NO. 12	F.A.S. RTE. 2703	SECTION (9-VBR)B	COUNTY CLAY	TOTAL SHEETS 65	SHEET NO. 34
22 SHEETS	SN 013-0044		CONTRACT NO. 74136		
FED. ROAD DIST. NO. 7 ILLINOIS FED. AID PROJECT					