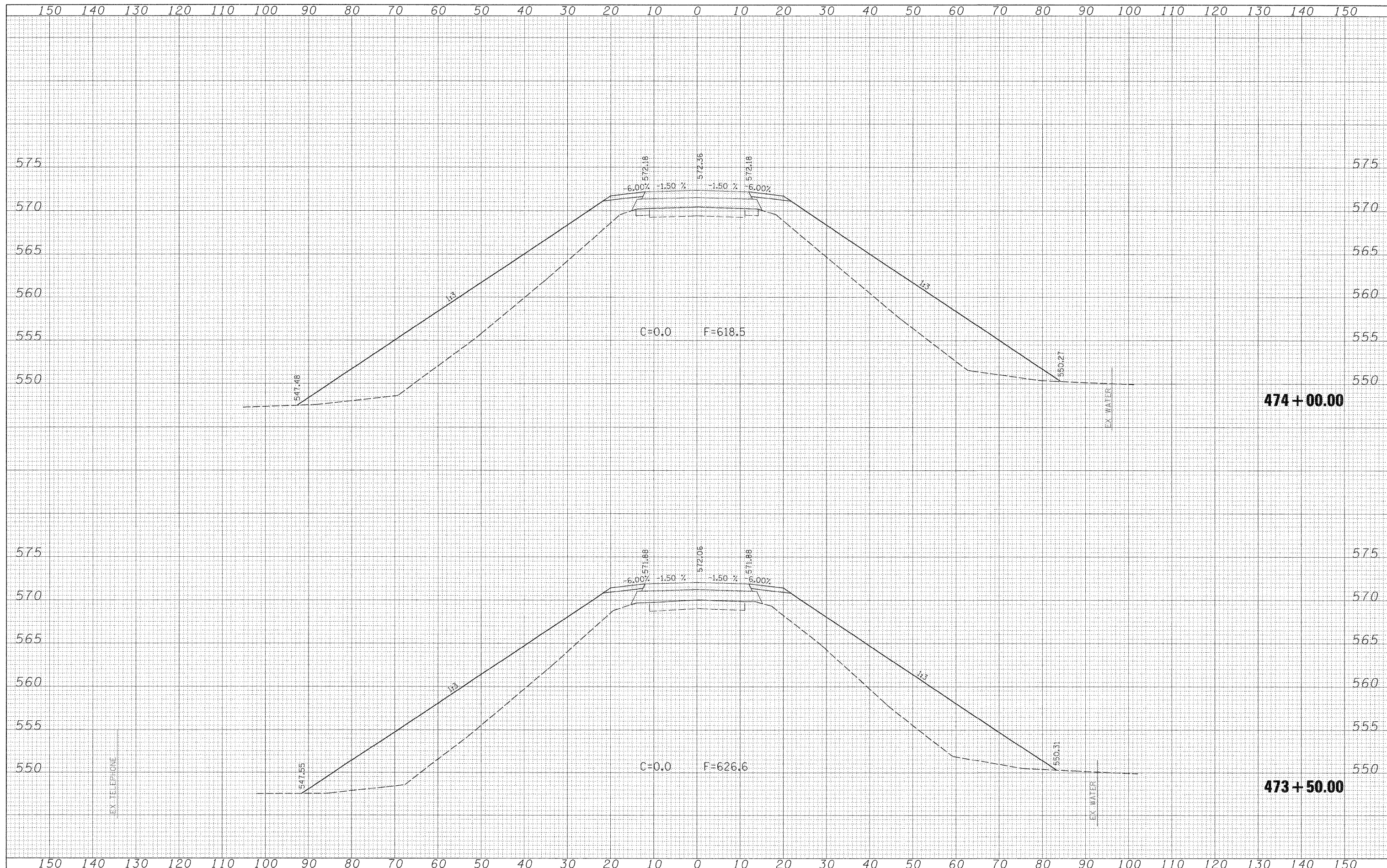


DATE	
BY	
SURVEYED	
PLOTTED	
TEMPLATE	
NOTE BOOK	
AREAS CHECKED	
NO.	

DATE	
BY	
SURVEYED	
PLOTTED	
TEMPLATE	
NOTE BOOK	
AREAS CHECKED	
NO.	



FILE NAME = S:\Projects\407-0008 080 Dist 7 Various\02 2 Kinmundy over

USER NAME = paul  
 PLOT SCALE = 10.0000' / IN.  
 PLOT DATE = 12/3/2008

DESIGNED - JLS  
 DRAWN - MAB  
 CHECKED - BRM  
 DATE - 5-20-08

REVISED -  
 REVISED -  
 REVISED -  
 REVISED -

**STATE OF ILLINOIS  
 DEPARTMENT OF TRANSPORTATION**

**CROSS SECTIONS - KINMUNDY/LOUISVILLE ROAD (FAS 2703)**

SCALE: 1"=10' SHEET NO. 7 OF 21 SHEETS STA. 473+50.00 TO STA. 474+00.00

F.A.S. RTE. 2703	SECTION (9-VBRIR)	COUNTY CLAY	TOTAL SHEETS 65	SHEET NO. 51
FED. ROAD DIST. NO. ILLINOIS FED. AID PROJECT			CONTRACT NO. 74136	