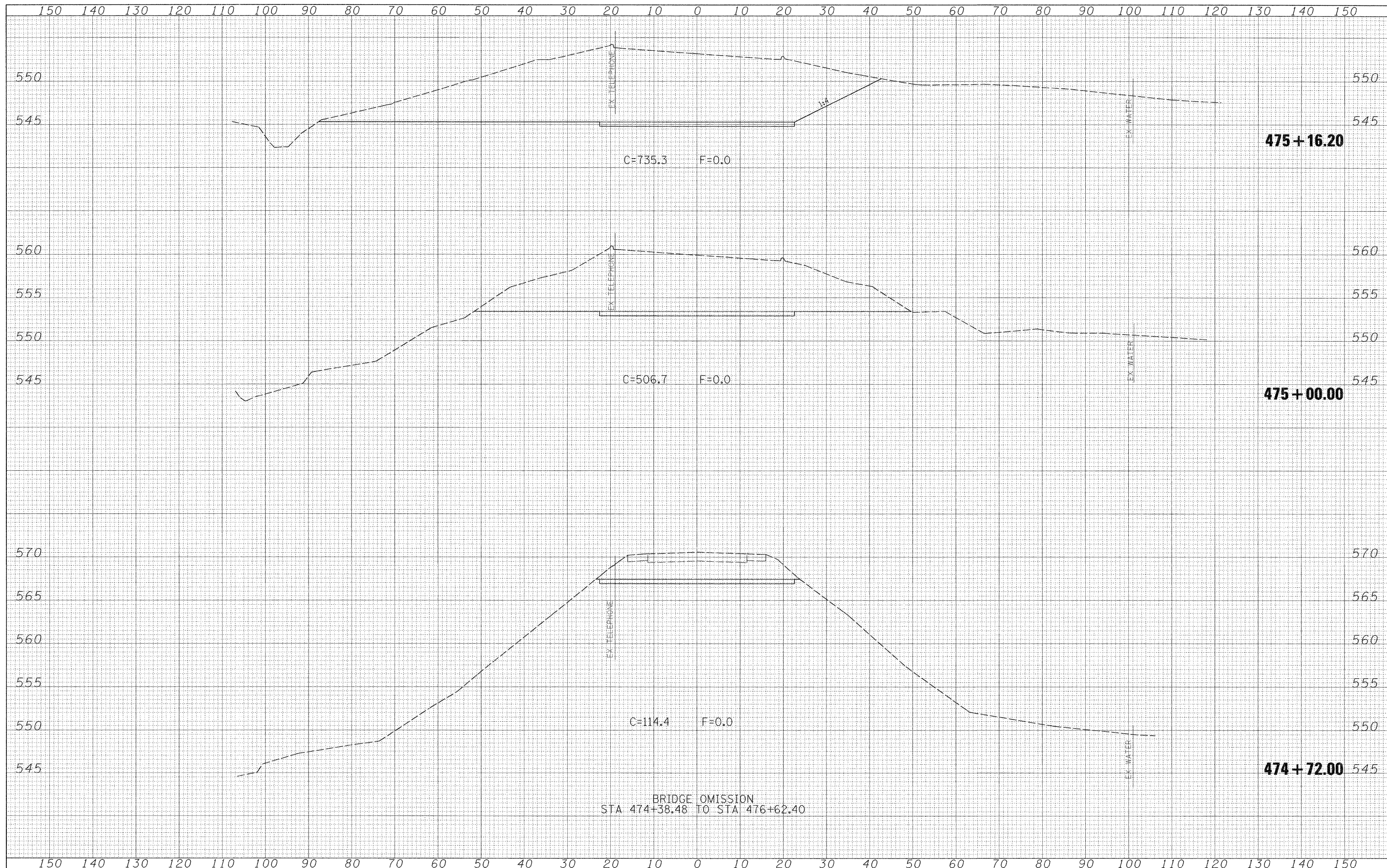


FINAL SURVEY	SURVEYED	BY	DATE
NOTE BOOK	PLOTTED		
NO.	TEMPLATE		
	AREAS CHECKED		

ORIGINAL SURVEY	SURVEYED	BY	DATE
NOTE BOOK	PLOTTED		
NO.	TEMPLATE		
	AREAS CHECKED		



FILE NAME =	USER NAME = paul	DESIGNED - JLS	REVISED -	STATE OF ILLINOIS DEPARTMENT OF TRANSPORTATION	CROSS SECTIONS - KINMUNDY/LOUISVILLE ROAD (FAS 2703)			F.A.S RTE. 2703	SECTION (9-VBRIR)	COUNTY CLAY	TOTAL SHEETS 65	SHEET NO. 53		
S:\Projects\407-0008 06D Dist 7 Various\02 Kinmundy over I	149\gjn\sssh_KINMUNDY.dgn	DRAWN - MAB	REVISED -					SCALE: 1"=10'	SHEET NO. 9 OF 21 SHEETS	STA. 474+72.00 TO STA. 475+16.20	FED. ROAD DIST. NO.	ILLINOIS	FED. AID PROJECT	CONTRACT NO. 74136
	PLOT SCALE = 10,0000 ' / IN.	CHECKED - BRM	REVISED -											
	PLOT DATE = 12/3/2008	DATE - 5-20-08	REVISED -											