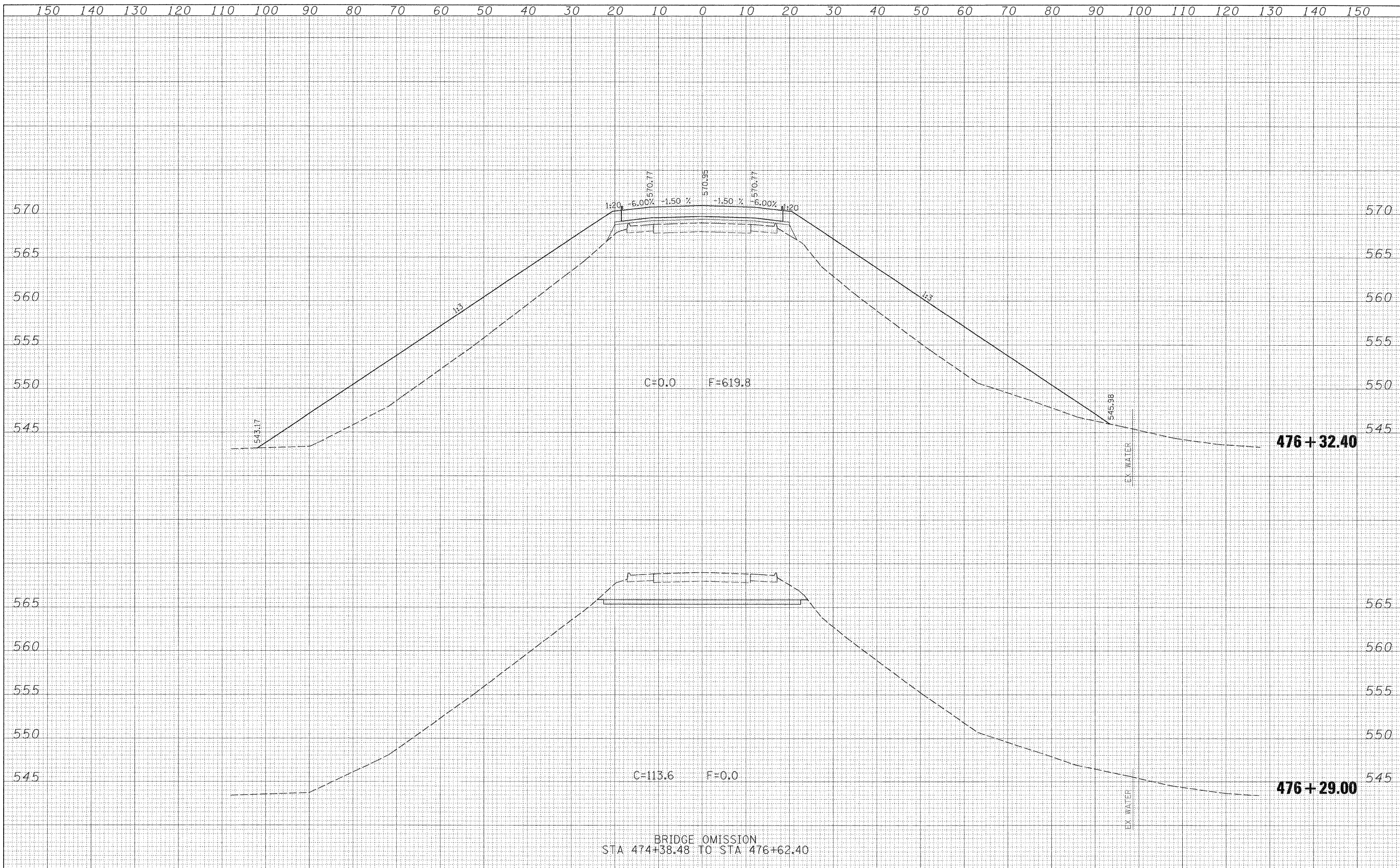


DATE	
BY	
SURVEYED	
PLOTTED	
TEMPLATE	
NOTE BOOK	
AREAS CHECKED	
NO.	

DATE	
BY	
SURVEYED	
PLOTTED	
TEMPLATE	
NOTE BOOK	
AREAS CHECKED	
NO.	



FILE NAME =	USER NAME = paul	DESIGNED - JLS	REVISED -	STATE OF ILLINOIS DEPARTMENT OF TRANSPORTATION	CROSS SECTIONS - KINMUNDY/LOUISVILLE ROAD (FAS 2703)	F.A.S. RTE.	SECTION	COUNTY	TOTAL SHEETS	SHEET NO.	
S:\Projects\407-0008 080 Dist 7 Various\WD 2 Kinmundy over I	logm\sssh_KINMUNDY.dgn	DRAWN - MAB	REVISED -			2703	(9-VBRIR)	CLAY	65	55	
PLOT SCALE = 10,0000' / IN.		CHECKED - BRM	REVISED -			CONTRACT NO. 74136					
PLOT DATE = 12/3/2008		DATE - 5-20-08	REVISED -			FED. ROAD DIST. NO. [ILLINOIS] FED. AID PROJECT					