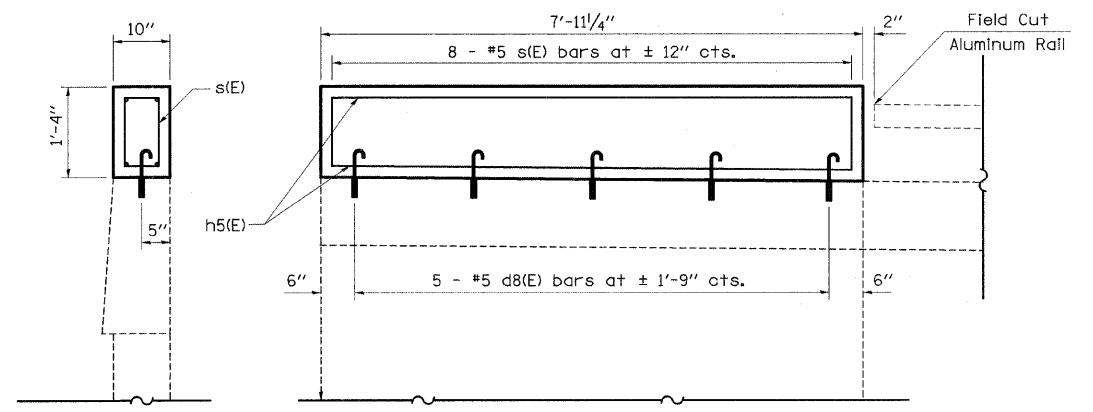


NORTH PARAPET
Looking North

BILL OF MATERIAL

BAR	NUMBER OF BARS	SIZE	LENGTH	SHAPE
d8(E)	5	#5	2' - 1"	⌋
s(E)	9	#5	3' - 6"	□
h5(E)	4	#5	7' - 7"	
REINFORCEMENT BARS (EPOXY COATED)			POUND	80
CONCRETE SUPERSTRUCTURE			CU YD	0.3



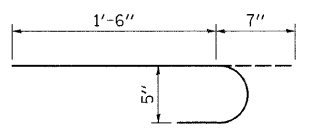
* Epoxy Grouted Bars in accordance with Art. 584 of the Standard Specs.

BRIDGE APPROACH WINGWALL IMPROVEMENT DETAIL
Northwest Wingwall Only

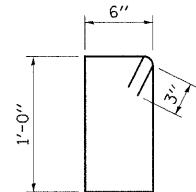
STRUCTURAL REPAIR

Cost Included in Structural Repair of Concrete (Depth <5")

PATCH NUMBER	STATION	AREA SQ FT
1	720+75	3.0
2	720+92	8.0
3	721+76	3.0
4	722+03	7.0
5	723+10	2.0
6	723+28	11.0
Total		31.0



BAR d8(E)



BAR s(E)