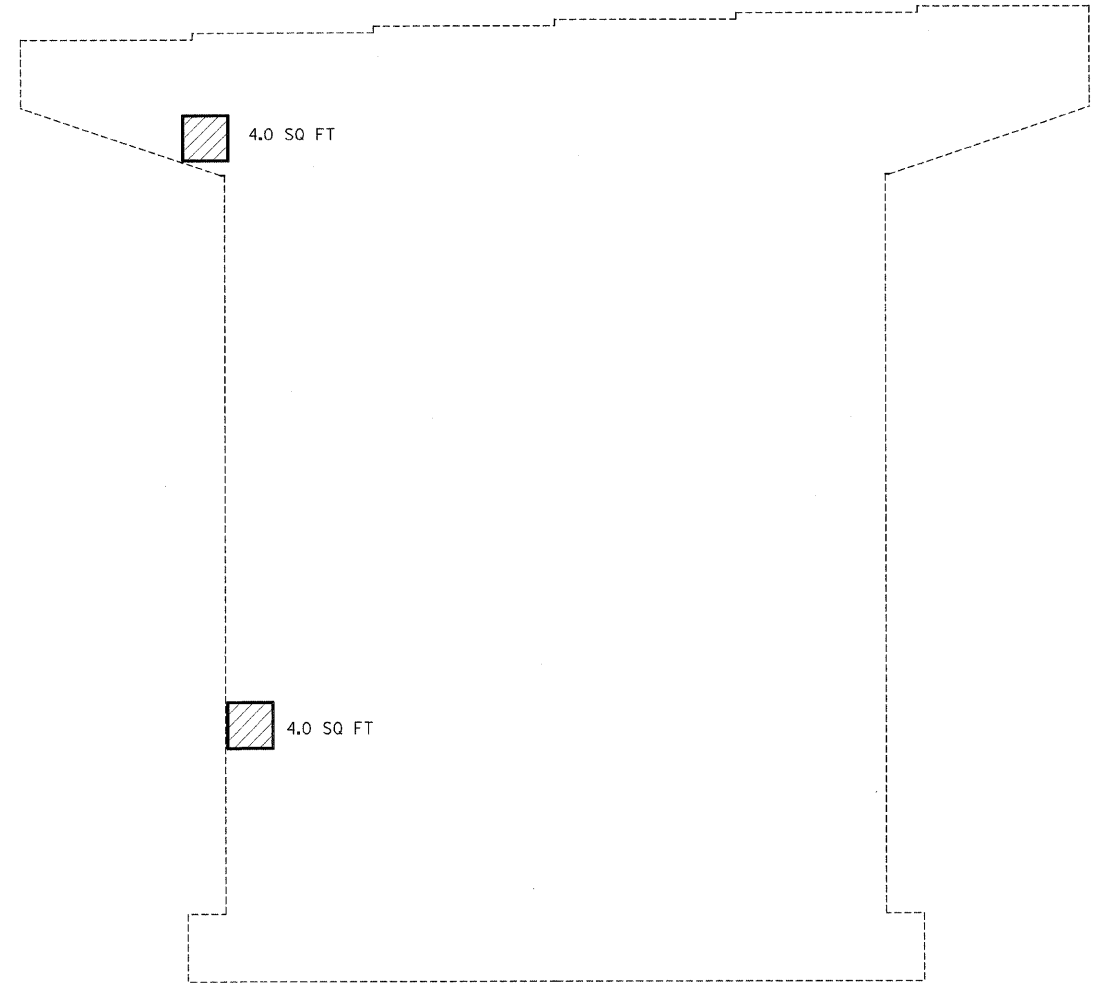


PIER #1 - WEST FACE
SN 058-0094 (WB)



PIER #1 - WEST FACE
SN 058-0093 (EB)

NOTE: QUANTITIES ARE ESTIMATED. ACTUAL QUANTITIES TO BE DETERMINED BY THE RESIDENT ENGINEER.

 Structural Repair of Concrete (Depth < 5")

FILE NAME = c:\pwork\PWIDOT\SWARTZRW\dms37779\k...enbridge.dgn	USER NAME = swartzrw	DESIGNED -	REVISED -	STATE OF ILLINOIS DEPARTMENT OF TRANSPORTATION	STRUCTURAL REPAIR - SUBSTRUCTURE SN 058-0093 (EB) & SN 058-0094 (WB)	F.A.I. RTE.	SECTION	COUNTY	TOTAL SHEETS	SHEET NO.
PLOT SCALE = 20.0000' / IN.	CHECKED -	REVISED -	72			66(B,HVB,HB-1BR)	MACON	83	39	
PLOT DATE = 9/28/2009	DATE -	REVISED -	CONTRACT NO. 74343							
						FED. ROAD DIST. NO.	ILLINOIS FED. AID PROJECT			
				SCALE: N/A	SHEET NO. 12 OF 17 SHEETS	STA.	TO STA.			