

SOUTH PARAPET
Looking South

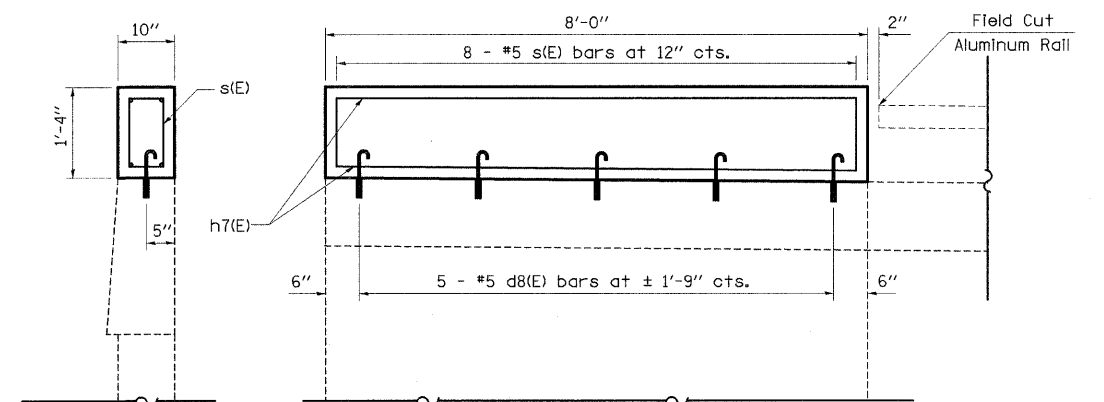
BILL OF MATERIAL

BAR	NUMBER OF BARS	SIZE	LENGTH	SHAPE	
d8(E)	5	#5	2' - 1"		
s(E)	9	#5	3' - 6"		
h7(E)	4	#5	7' - 8"		
REINFORCEMENT BARS (EPOXY COATED)				POUND	120
CONCRETE SUPERSTRUCTURE				CU YD	0.3

STRUCTURAL REPAIR

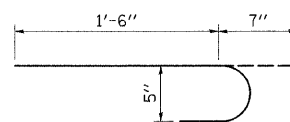
Cost Included in Structural Repair of Concrete (Depth <5")

PATCH NUMBER	STATION	AREA SQ. FT.
1	797+11	66.0
Total		66.0

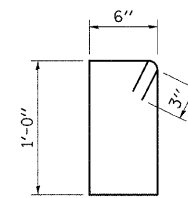


* Epoxy Grouted Bars In accordance with Art. 584 of the Standard Specs.

BRIDGE APPROACH WINGWALL IMPROVEMENT DETAIL
Southeast Wingwall Only



BAR d8(E)



BAR s(E)