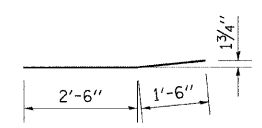


BILL OF MATERIAL

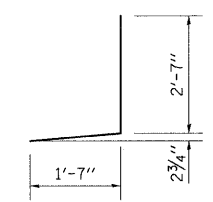
BAR	NUMBER OF BARS	TOTAL	SIZE	LENGTH	SHAPE
	STAGE I	STAGE II			
a6(E)	16	16	#5	20'-7"	—
a7(E)	6	6	#6	4'-0"	—
d2(E)	2	2	#4	2'-1"	□
d6(E)	7	7	#4	4'-2"	J
d7(E)	7	7	#5	4'-0"	J
h4(E)	8	8	#6	19'-3"	—
x3(E)	38	38	#5	23'-3"	└

CONCRETE REMOVAL	CU. YD.	12.0
REINFORCEMENT BARS (EPOXY COATED)	POUND	3010
CONCRETE SUPERSTRUCTURE	CU. YD.	13.3

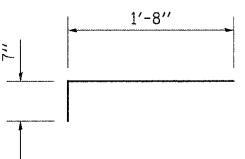
REINFORCEMENT BARS DESIGNATED (E) SHALL BE EPOXY COATED



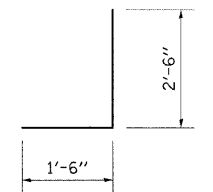
BAR d7(E)



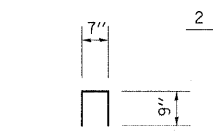
BAR d6(E)



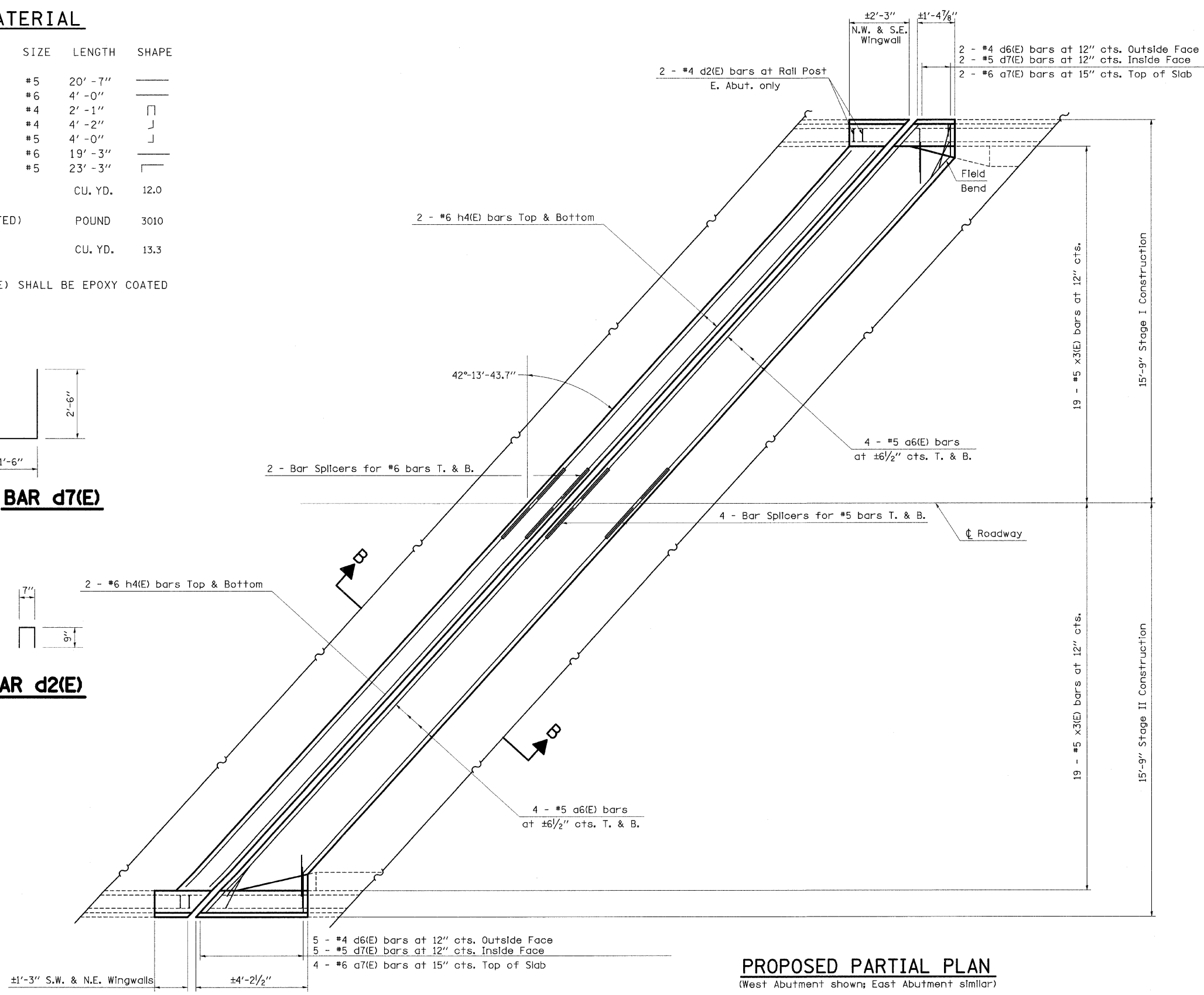
BAR x3(E)



BAR d7(E)



BAR d2(E)



PROPOSED PARTIAL PLAN
(West Abutment shown; East Abutment similar)

FILE NAME =	USER NAME = swartzw	DESIGNED -	REVISED -	STATE OF ILLINOIS DEPARTMENT OF TRANSPORTATION	EXPANSION JOINT REPLACEMENT DETAILS SN 058-0097			F.A.I. RTE.	SECTION	COUNTY	TOTAL SHEETS	SHEET NO.
c:\pw\work\PWIDOT\SWARTZRW\dms37779\k...	enbr1dgedgn	DRAWN -	REVISED -					72	66(B,HVB,HB-1)BR	MACON	83	69
PLOT SCALE = 20,0000' / IN.		CHECKED -	REVISED -					CONTRACT NO. 74343				
PLOT DATE = 9/28/2009		DATE -	REVISED -					ILLINOIS FED. AID PROJECT				
								SCALE: N/A	SHEET NO. 4 OF 17 SHEETS	STA. TO STA.		