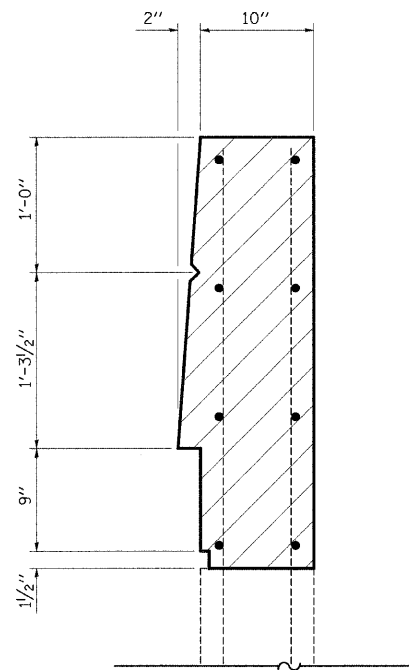
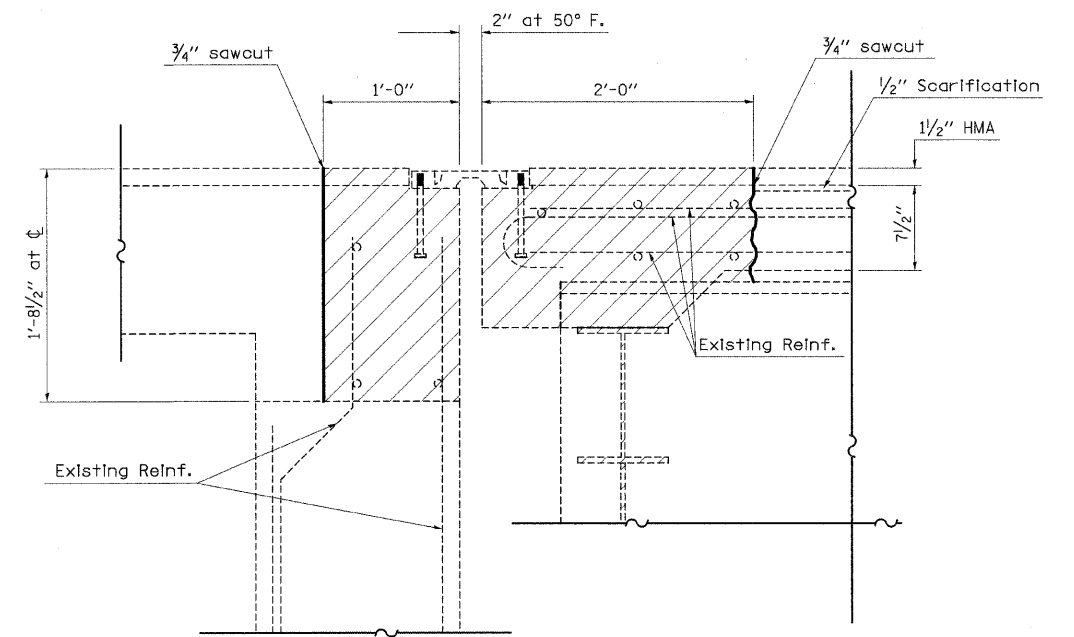


SECTION THRU PARAPET

Note: Rotate d6(E) and d7(E) bars in parapet to fit horizontal legs in concrete pour.



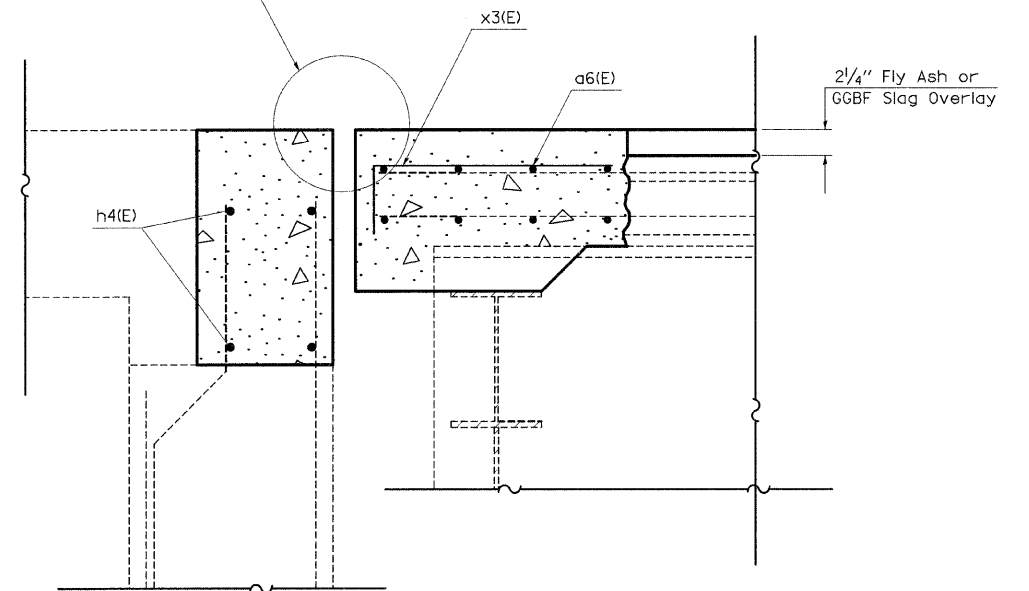
SECTION THRU WINGWALL



SECTION A-A
(Dimensions at RT L's to end of deck)

For details of expansion joint See sheet 51 of 52

- Existing Reinforcement
- Proposed Reinforcement



SECTION B-B
(Dimensions at RT L's to end of deck)

FILE NAME = c:\pw\work\PWIDOT\SWARTZR\des37779\k	USER NAME = swartzr enbridge.dgn	DESIGNED -	REVISED -	STATE OF ILLINOIS DEPARTMENT OF TRANSPORTATION	RAIL SUPPORT ANCHOR DETAILS			F.A.I. RTE. 72	SECTION 66(B,HVB,HB-1)BR	COUNTY MACON	TOTAL SHEETS 83	SHEET NO. 70
PLOT SCALE = 20,0000' / IN.	CHECKED -	REVISED -	CONTRACT NO. 74343									
PLOT DATE = 9/28/2009	DATE -	REVISED -	FED. ROAD DIST. NO. ILLINOIS FED. AID PROJECT									
			SCALE: N/A					SHEET NO. 5 OF 17 SHEETS	STA.	TO STA.		