

STATE OF ILLINOIS
DEPARTMENT OF TRANSPORTATION
DIVISION OF HIGHWAYS
**PROPOSED
HIGHWAY PLANS**

FAP ROUTE 325 (IL 16)
D7 BRIDGE REPAIRS 2010-2
PROJECT --
BRIDGE REPAIRS
SHELBY COUNTY

C-97-116-09

F.A.P. RTE.	SECTION	COUNTY	TOTAL SHEETS	SHEET NO.
325		Shelby	1	1
		ILLINOIS	CONTRACT NO. 74403	

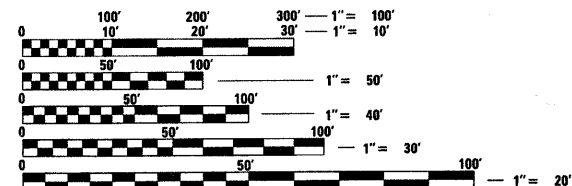
D7 BRIDGE REPAIRS 2010-2

D-97-060-09



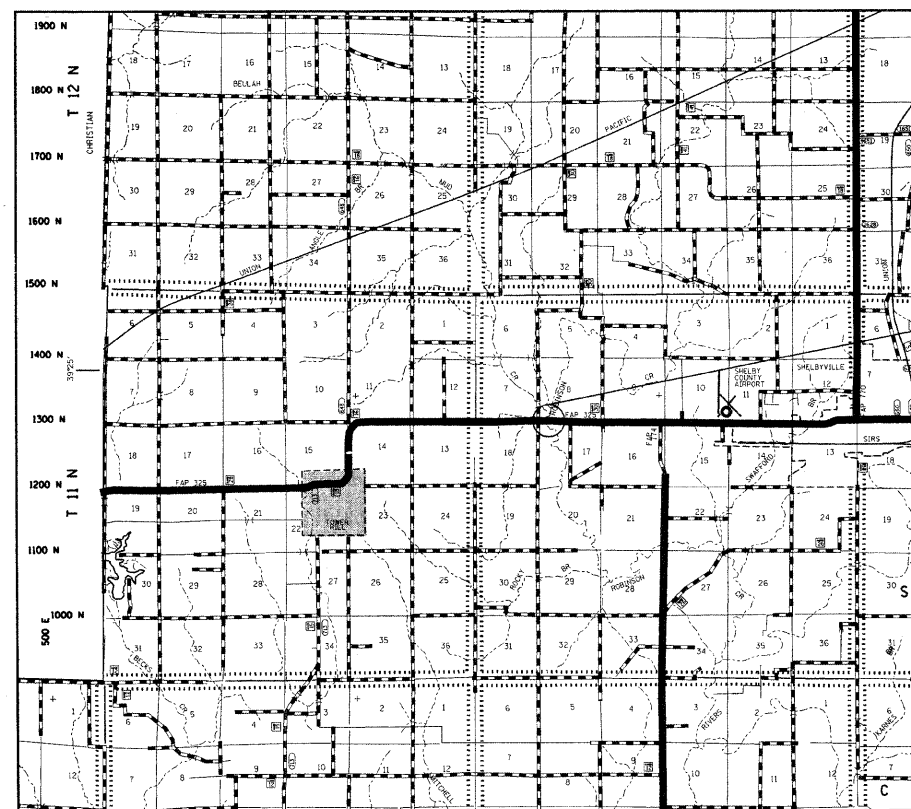
FOR INDEX OF SHEETS, SEE SHEET NO. 2

2007 ADT = 4650



FULL SIZE PLANS HAVE BEEN PREPARED USING STANDARD ENGINEERING SCALES. REDUCED SIZED PLANS WILL NOT CONFORM TO STANDARD SCALES. IN MAKING MEASUREMENTS ON REDUCED PLANS, THE ABOVE SCALES MAY BE USED.

J.U.L.I.E.
JOINT UTILITY LOCATION INFORMATION FOR EXCAVATION
1-800-892-0123
OR 811



LOCATION OF PROPOSED IMPROVEMENT

GROSS LENGTH = 372 FT. = 0.07 MILE
NET LENGTH = 372 FT. = 0.07 MILE

PROJECT ENGINEER: ALEC RING
PROJECT MANAGER: BRIAN LEWIS

CONTRACT NO. 74403

STATE OF ILLINOIS
DEPARTMENT OF TRANSPORTATION
DIVISION OF HIGHWAYS

SUBMITTED February 10, 2010

Raymond A. Smith
DEPUTY DIRECTOR OF HIGHWAYS, REGION ENGINEER

March 19, 2010

Scott E. Still, P.E.
Acting ENGINEER OF DESIGN AND ENVIRONMENT

March 19, 2010

Christine M. Reed
DIRECTOR OF HIGHWAYS, CHIEF ENGINEER

**PRINTED BY THE AUTHORITY
OF THE STATE OF ILLINOIS**