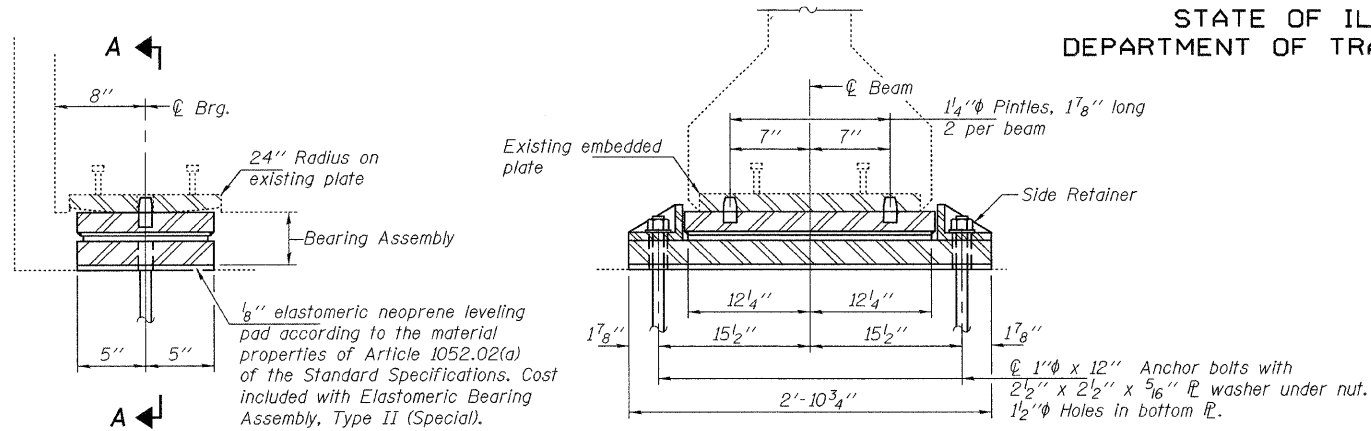


STATE OF ILLINOIS
DEPARTMENT OF TRANSPORTATION



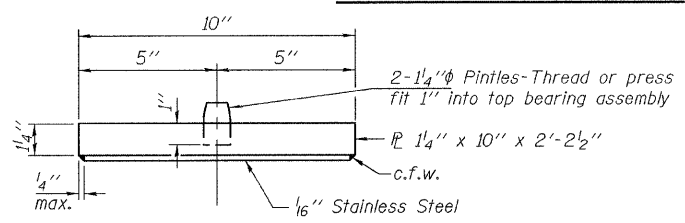
BEAM REACTIONS

R _ℓ	(K)	51.3
R _ℓ	(K)	29.4
Imp.	(K)	7.4
R (Total)	(K)	88.1

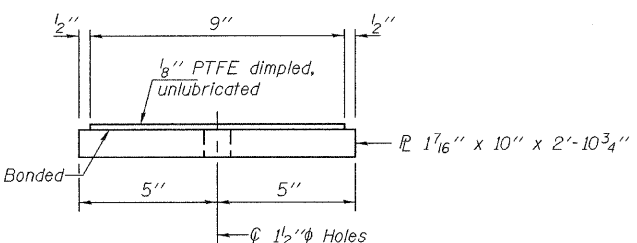
SECTION AT ABUT.

SECTION A-A

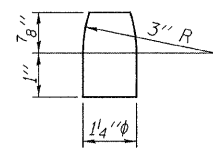
TYPE II ELASTOMERIC EXP. BRG.



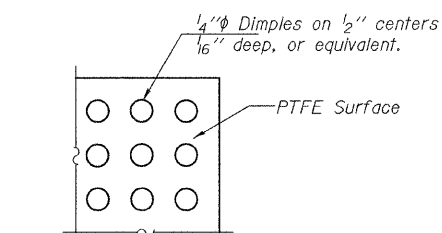
TOP BEARING ASSEMBLY



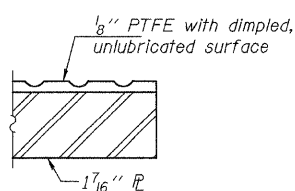
BOTTOM BEARING ASSEMBLY



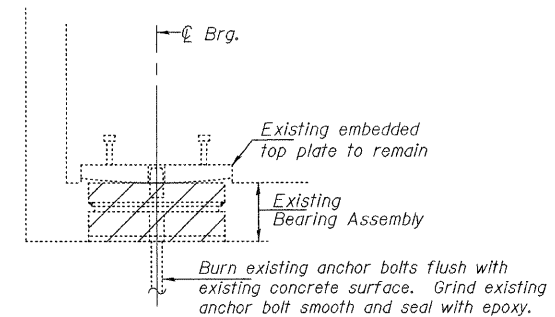
PINTLE



PLAN-PTFE SURFACE



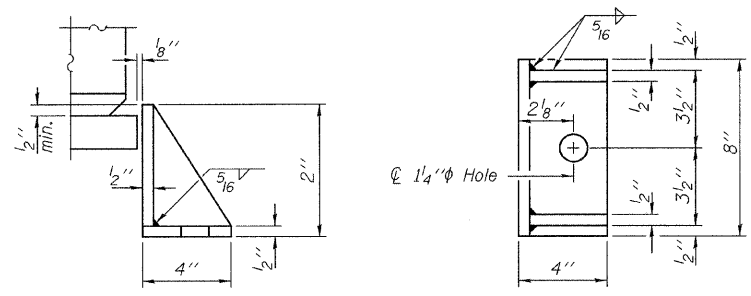
SECTION THRU PTFE



EXISTING BEARING REMOVAL DETAIL

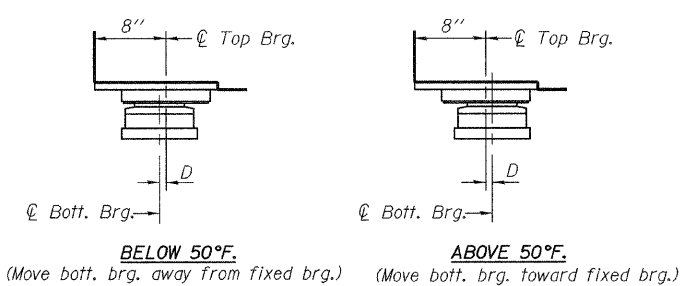
Cost included with Jack and Remove Existing Bearings.

Notes:
The structural steel plates of the Bearing Assembly shall conform to the requirements of AASHTO M 270 Grade 50 Min. jack capacity = 52 Tons.
Anchor bolts shall be ASTM F1554 all-thread (or an Engineer-approved alternate material) of the grade(s) and diameter(s) specified. ASTM A307 Grade C anchor bolts may be used in lieu of ASTM F1554 Grade 36 (Fy=36ksi). The corresponding specified grade of AASHTO M314 anchor bolts may be used in lieu of ASTM F1554.
Anchor bolts for Type II bearings shall be placed in holes in the concrete drilled through holes in the bottom bearing plate after members are in place. Side retainers shall be placed after bolts are installed.
Drilled and set anchor bolts shall be installed according to Article 521.06 of the Standard Specifications.
Side retainers and other steel members required for the bearing assembly shall be included in the cost of Elastomeric Bearing Assembly, Type II (Special).
The 1/8 inch PTFE sheet shall be bonded directly to the top steel plate with a two-component, medium viscosity epoxy resin, conforming to the requirements of the Federal Specification MMM-A-134, Type I. The bond agent shall be applied on the full area of the contact surfaces.
Bonding of 1/8 inch PTFE sheet during vulcanizing process will be permitted provided the process and method of adjusting assembly height is approved by the Engineer.



SIDE RETAINER

Equivalent rolled angle with stiffeners will be allowed in lieu of welded plates.



SETTING ANCHOR BOLTS AT EXP. BRG.
D=1/8 inch per each 100' of expansion for every 15° temp. change from the normal temp. of 50°F.

BILL OF MATERIAL

Item	Unit	Total
Elastomeric Bearing Assembly, Type II (Special)	Each	14
Anchor Bolts 1"φ	Each	28
Jack and Remove Existing Bearings	Each	14

**ABUTMENT BEARING REPLACEMENT DETAILS
STRUCTURE NO. 087-0005**

DESIGNED	Victor H. Valiz
CHECKED	Ramin Bali
DRAWN	baliva
CHECKED	VHV

EXAMINED	Carl Kroyer	MARCH 4, 2010
PASSED	Ralph E. Anderson	

SHEET NO. 1	SBI RTE.	SECTION	COUNTY	TOTAL SHEETS	SHEET NO.
1 SHEETS	16	D7 Bridge Repairs 2010-2	SHELBY	16	16
			CONTRACT NO. 74403		
FED. ROAD DIST. NO.		ILLINOIS FED. AID PROJECT			