

STATE OF ILLINOIS  
DEPARTMENT OF TRANSPORTATION  
DIVISION OF HIGHWAYS

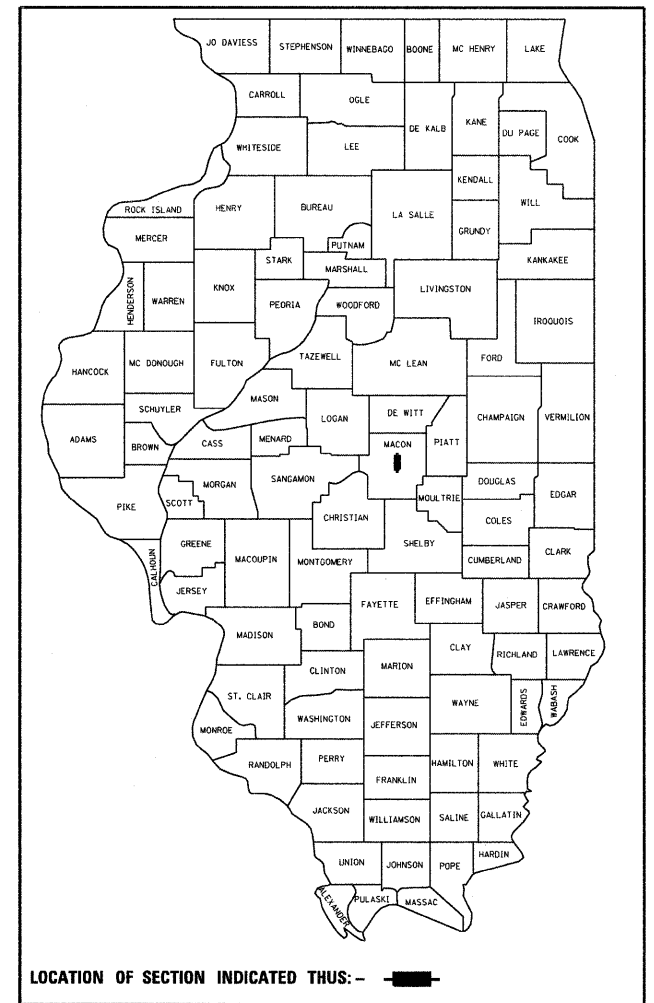
**PROPOSED  
HIGHWAY PLANS**

FAP ROUTE 714 (IL ROUTE 105)  
SECTION (58-20)(48X-2)RS-1 & 128RS-3  
**PROJECT --  
RESURFACING  
MACON COUNTY**  
C-97-119-09

F.A.P. RTE.	SECTION	COUNTY	TOTAL SHEETS	SHEET NO.
714		MACON	100	1
		ILLINOIS	CONTRACT NO. 74405	

(58-20)(48X-2)RS-1 & 128RS-3

D-97-063-09



LOCATION OF SECTION INDICATED THUS: - [black rectangle] -

FOR INDEX OF SHEETS, SEE SHEET NO. 2

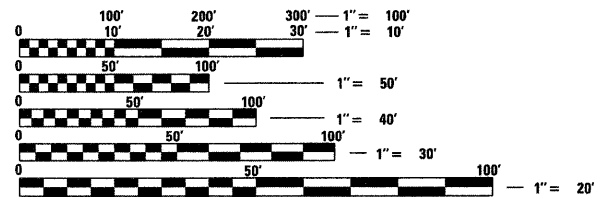
STATION EQUATION:  
STA. 724 + 50.00 (BK) =  
STA. 784 + 04.00 (AH)

ADT (2009)  
IL 48 - 10,300  
IL 105 - 13,700

IL 48 ENDS: STA. 889 + 21.97  
IL 105 BEGINS: STA. 102 + 15.81

PROJECT BEGINS:  
STA. 784 + 04.00

PROJECT ENDS:  
STA. 151 + 01.73

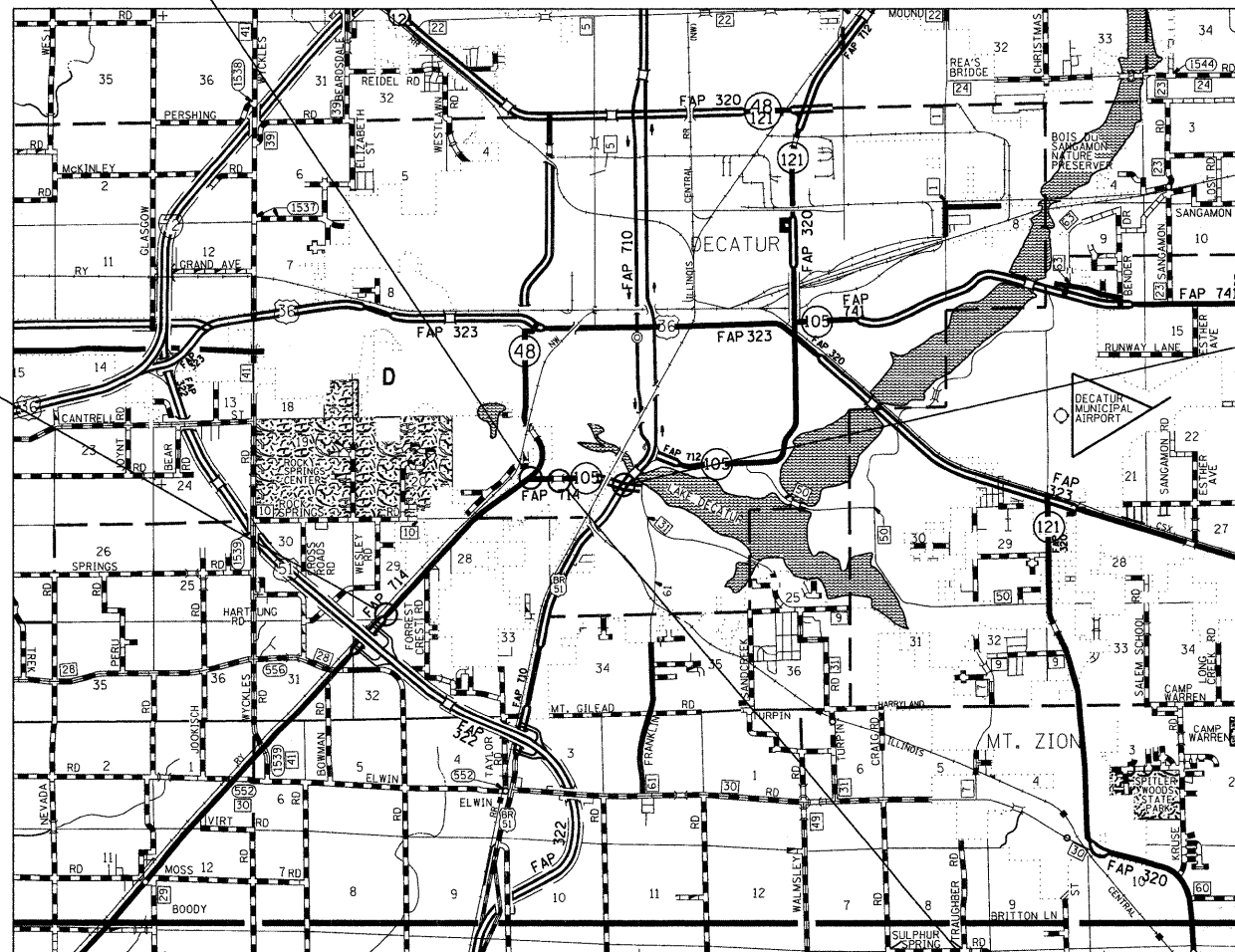


FULL SIZE PLANS HAVE BEEN PREPARED USING STANDARD ENGINEERING SCALES. REDUCED SIZED PLANS WILL NOT CONFORM TO STANDARD SCALES. IN MAKING MEASUREMENTS ON REDUCED PLANS, THE ABOVE SCALES MAY BE USED.

J.U.L.I.E.  
JOINT UTILITY LOCATION INFORMATION FOR EXCAVATION  
1-800-892-0123  
OR 811

PROJECT ENGINEER: TOM RONAN  
PROJECT MANAGER: JEFF DAVISON

CONTRACT NO. 74405



GROSS LENGTH = 16,996.4 FT. = 3.22 MILE  
NET LENGTH = 16,863.8 FT. = 3.19 MILE

S.N. 058-0112

STATE OF ILLINOIS  
DEPARTMENT OF TRANSPORTATION  
DIVISION OF HIGHWAYS

SUBMITTED January 25 20 10

*Rose L. Dreibell*  
DEPUTY DIRECTOR OF HIGHWAYS, REGION ENGINEER

March 19, 2010  
*Scott E. Still, P.E.*  
ENGINEER OF DESIGN AND ENVIRONMENT

March 19, 2010  
*Christie M. Reed*  
DIRECTOR OF HIGHWAYS, CHIEF ENGINEER

**PRINTED BY THE AUTHORITY  
OF THE STATE OF ILLINOIS**