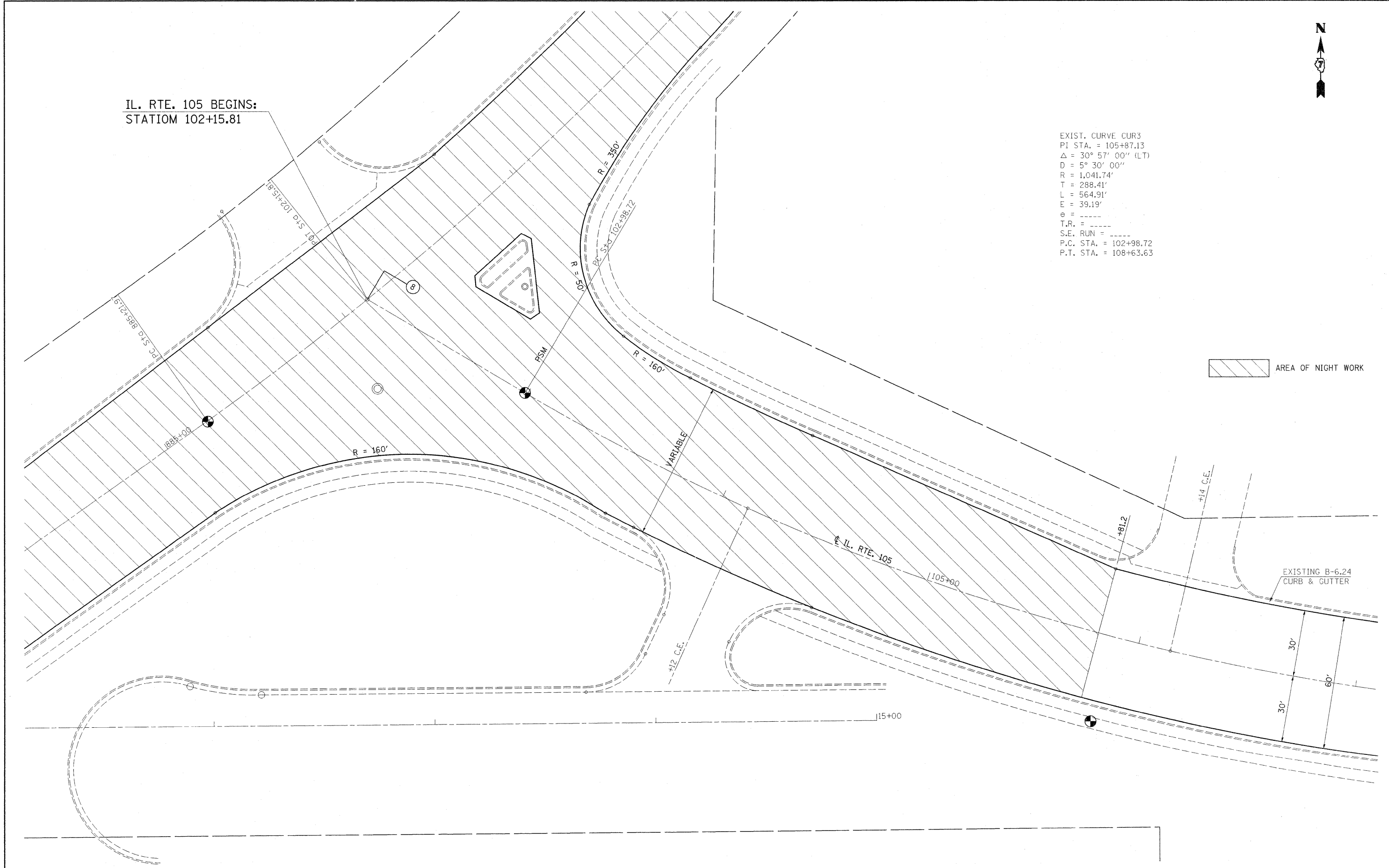




IL. RTE. 105 BEGINS:
STATION 102+15.81

EXIST. CURVE CUR3
 PI STA. = 105+87.13
 $\Delta = 30^\circ 57' 00''$ (LT)
 $D = 5^\circ 30' 00''$
 $R = 1,041.74'$
 $T = 288.41'$
 $L = 564.91'$
 $E = 39.19'$
 $e = \text{-----}$
 $T.R. = \text{-----}$
 $S.E. \text{ RUN} = \text{-----}$
 $P.C. \text{ STA.} = 102+98.72$
 $P.T. \text{ STA.} = 108+63.63$

AREA OF NIGHT WORK



• (58-20X48X-2)RS-1 & 128RS-3

FILE NAME =
 c:\pw\work\NPWIDOT\SWARTZRW\d0146320\1\7

USER NAME = swartzrw
 4405-sht-plan105.dgn
 PLOT SCALE = 20.0000' / IN.
 PLOT DATE = 1/19/2010

DESIGNED -
 DRAWN -
 CHECKED -
 DATE -

REVISED -
 REVISED -
 REVISED -
 REVISED -

**STATE OF ILLINOIS
 DEPARTMENT OF TRANSPORTATION**

SCALE: 20
 SHEET NO. 1 OF 10 SHEETS
 STA. 102+15.81 TO STA. 107+00

**PLAN SHEETS
 IL. ROUTE 105**

F.A.P. RTE.	SECTION	COUNTY	TOTAL SHEETS	SHEET NO.
714	*	MACON	100	41
CONTRACT NO. 74405				
ILLINOIS FED. AID PROJECT				