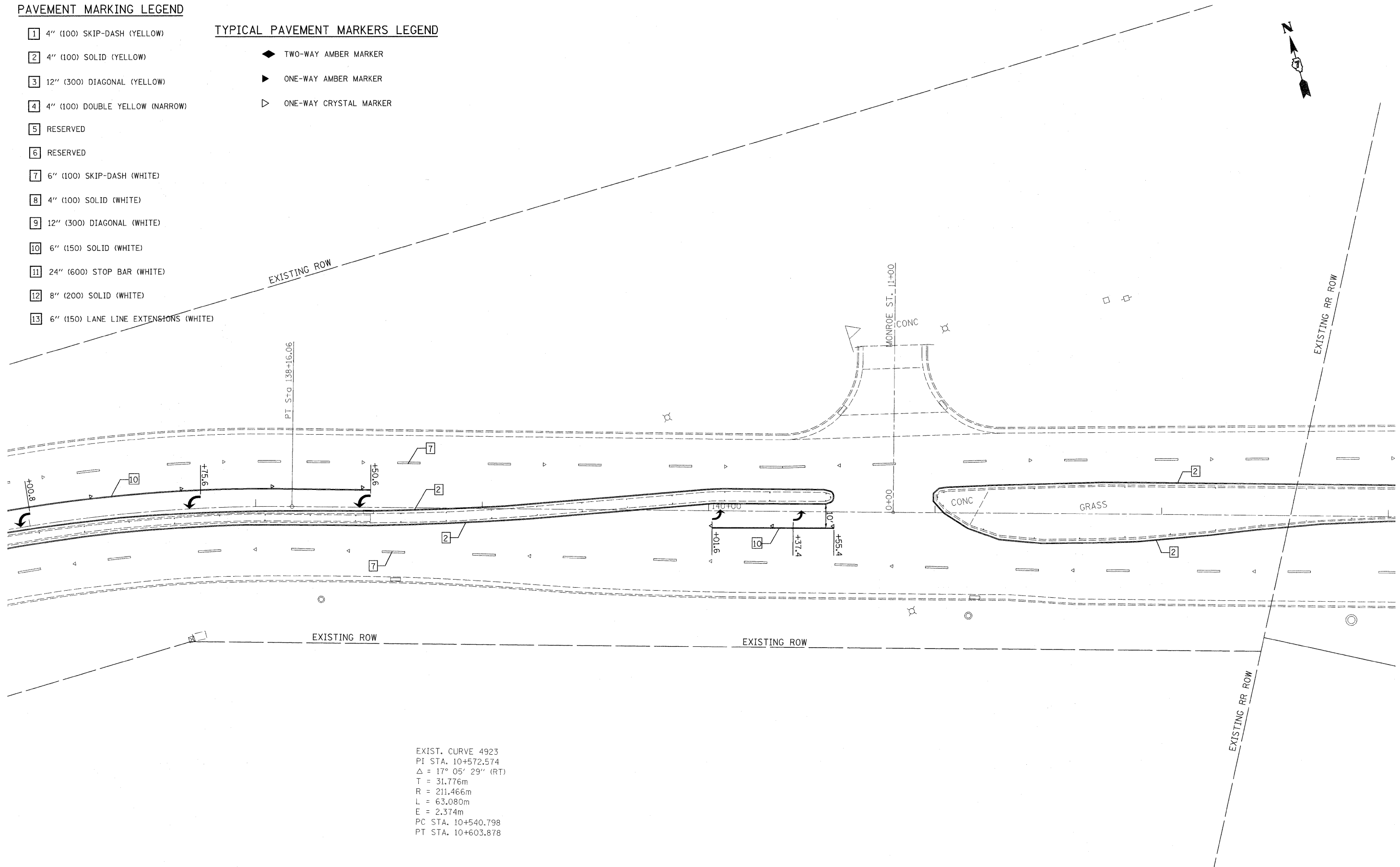


**PAVEMENT MARKING LEGEND**

- 1 4" (100) SKIP-DASH (YELLOW)
- 2 4" (100) SOLID (YELLOW)
- 3 12" (300) DIAGONAL (YELLOW)
- 4 4" (100) DOUBLE YELLOW (NARROW)
- 5 RESERVED
- 6 RESERVED
- 7 6" (100) SKIP-DASH (WHITE)
- 8 4" (100) SOLID (WHITE)
- 9 12" (300) DIAGONAL (WHITE)
- 10 6" (150) SOLID (WHITE)
- 11 24" (600) STOP BAR (WHITE)
- 12 8" (200) SOLID (WHITE)
- 13 6" (150) LANE LINE EXTENSIONS (WHITE)

**TYPICAL PAVEMENT MARKERS LEGEND**

- ◆ TWO-WAY AMBER MARKER
- ▶ ONE-WAY AMBER MARKER
- ▷ ONE-WAY CRYSTAL MARKER



EXIST. CURVE 4923  
 PI STA. 10+572.574  
 $\Delta = 17^\circ 05' 29''$  (RT)  
 T = 31.776m  
 R = 211.466m  
 L = 63.080m  
 E = 2.374m  
 PC STA. 10+540.798  
 PT STA. 10+603.878

• (58-20)(48X-2)RS-1 & 128RS-3

FILE NAME =	USER NAME = swartzrw	DESIGNED -	REVISED -
c:\pw_work\PWIDOT\SWARTZRW\d0146320\07	4405-shr-striping.dgn	DRAWN -	REVISED -
	PLOT SCALE = 20.0000' / IN.	CHECKED -	REVISED -
	PLOT DATE = 1/19/2010	DATE -	REVISED -

**STATE OF ILLINOIS  
 DEPARTMENT OF TRANSPORTATION**

**IL. RTE. 105 STRIPING DETAILS**

SCALE: 20 SHEET NO. 7 OF 10 SHEETS STA. 137+00 TO STA. 143+00

F.A.P. RTE.	SECTION	COUNTY	TOTAL SHEETS	SHEET NO.
714	*	MACON	100	74
			CONTRACT NO. 74405	
ILLINOIS FED. AID PROJECT				