

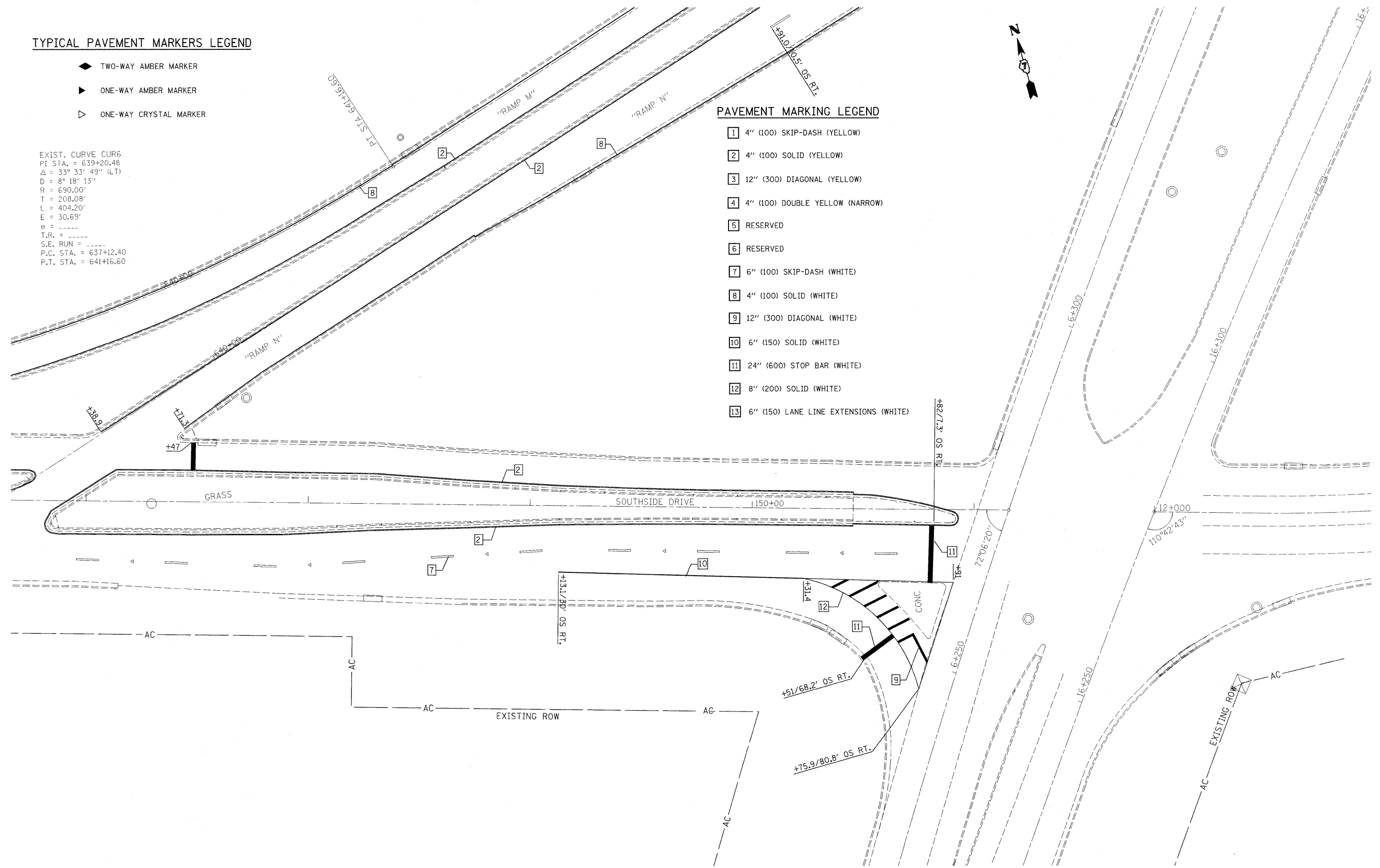
TYPICAL PAVEMENT MARKERS LEGEND

- ◆ TWO-WAY AMBER MARKER
- ▶ ONE-WAY AMBER MARKER
- ▷ ONE-WAY CRYSTAL MARKER

EXIST. CURVE CUR6
 PI STA. = 639+20.48
 $\Delta = 33^\circ 33' 49''$ (LT)
 $D = 8^\circ 18' 13''$
 $R = 690.00'$
 $T = 208.08'$
 $L = 404.20'$
 $E = 30.69'$
 $e =$
 $T.R. =$
 $S.E. RUN =$
 $P.C. STA. = 637+12.40$
 $P.T. STA. = 641+16.60$

PAVEMENT MARKING LEGEND

- 1 4" (100) SKIP-DASH (YELLOW)
- 2 4" (100) SOLID (YELLOW)
- 3 12" (300) DIAGONAL (YELLOW)
- 4 4" (100) DOUBLE YELLOW (NARROW)
- 5 RESERVED
- 6 RESERVED
- 7 6" (100) SKIP-DASH (WHITE)
- 8 4" (100) SOLID (WHITE)
- 9 12" (300) DIAGONAL (WHITE)
- 10 6" (150) SOLID (WHITE)
- 11 24" (600) STOP BAR (WHITE)
- 12 8" (200) SOLID (WHITE)
- 13 6" (150) LANE LINE EXTENSIONS (WHITE)



• (58-20X48X-2)RS-1 & 128RS-3

FILE NAME =	USER NAME = swartzw	DESIGNED -	REVISED -
ct:\pw_work\pwidot\SWARTZRW\08146320\07	4405-sht-stripping.dgn	DRAWN -	REVISED -
	PLOT SCALE = 20,000.0' / IN.	CHECKED -	REVISED -
	PLOT DATE = 1/19/2010	DATE -	REVISED -

**STATE OF ILLINOIS
 DEPARTMENT OF TRANSPORTATION**

IL. RTE. 105 STRIPING DETAILS

SCALE: 20 SHEET NO. 9 OF 10 SHEETS STA. 147+00 TO STA. 151+01.73

F.A.P. RTE.	SECTION	COUNTY	TOTAL SHEETS	SHEET NO.
714	*	MACON	100	76
CONTRACT NO. 74405				
ILLINOIS FED. AID PROJECT				