

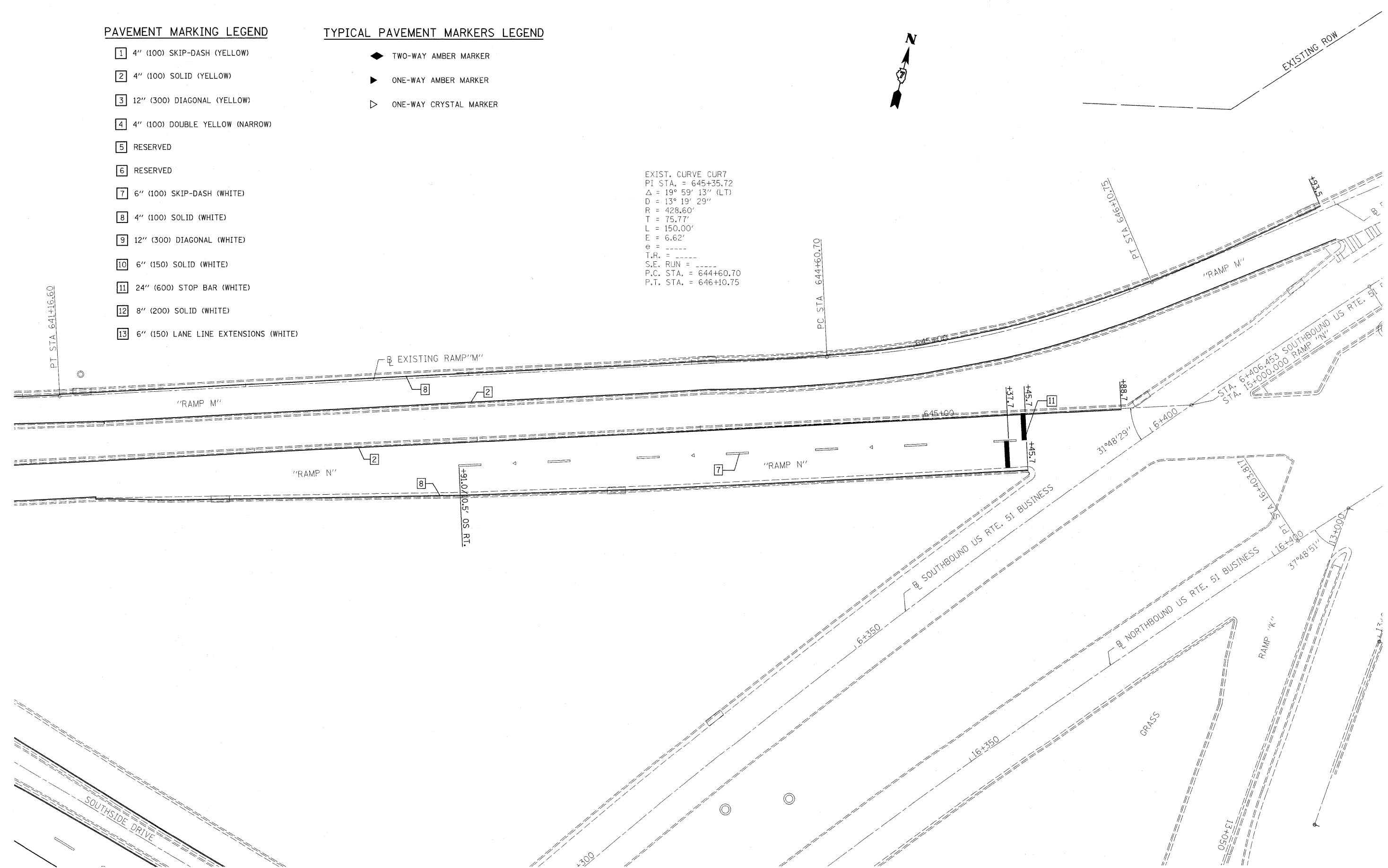
PAVEMENT MARKING LEGEND

- 1 4" (100) SKIP-DASH (YELLOW)
- 2 4" (100) SOLID (YELLOW)
- 3 12" (300) DIAGONAL (YELLOW)
- 4 4" (100) DOUBLE YELLOW (NARROW)
- 5 RESERVED
- 6 RESERVED
- 7 6" (100) SKIP-DASH (WHITE)
- 8 4" (100) SOLID (WHITE)
- 9 12" (300) DIAGONAL (WHITE)
- 10 6" (150) SOLID (WHITE)
- 11 24" (600) STOP BAR (WHITE)
- 12 8" (200) SOLID (WHITE)
- 13 6" (150) LANE LINE EXTENSIONS (WHITE)

TYPICAL PAVEMENT MARKERS LEGEND

- ◆ TWO-WAY AMBER MARKER
- ▶ ONE-WAY AMBER MARKER
- ▷ ONE-WAY CRYSTAL MARKER

EXIST. CURVE CUR7
 PI STA. = 645+35.72
 $\Delta = 19^\circ 59' 13''$ (LT)
 $D = 13^\circ 19' 29''$
 $R = 428.60'$
 $T = 75.77'$
 $L = 150.00'$
 $E = 6.62'$
 $e = \text{---}$
 $T.R. = \text{---}$
 $S.E. \text{ RUN} = \text{---}$
 $P.C. \text{ STA.} = 644+60.70$
 $P.T. \text{ STA.} = 646+10.75$



• (58-20)(48X-2)RS-1 & 12BR5-3

FILE NAME =	USER NAME = swartzw	DESIGNED -	REVISED -	STATE OF ILLINOIS DEPARTMENT OF TRANSPORTATION	IL. RTE. 105 STRIPING DETAILS			F.A.P. RTE. 714	SECTION .	COUNTY MACON	TOTAL SHEETS 100	SHEET NO. 77		
ct:\pw_work\PMIDOT\SMARTZRW\d8146320\07	4485-shr-striping.dgn	DRAWN -	REVISED -		SCALE: 20			SHEET NO. 10 OF 10 SHEETS			STA. 641+00 TO STA. 646+00		CONTRACT NO. 74405	
	PLOT SCALE = 28,0000 1/1 IN.	CHECKED -	REVISED -		ILLINOIS FED. AID PROJECT									
	PLOT DATE = 1/19/2010	DATE -	REVISED -											