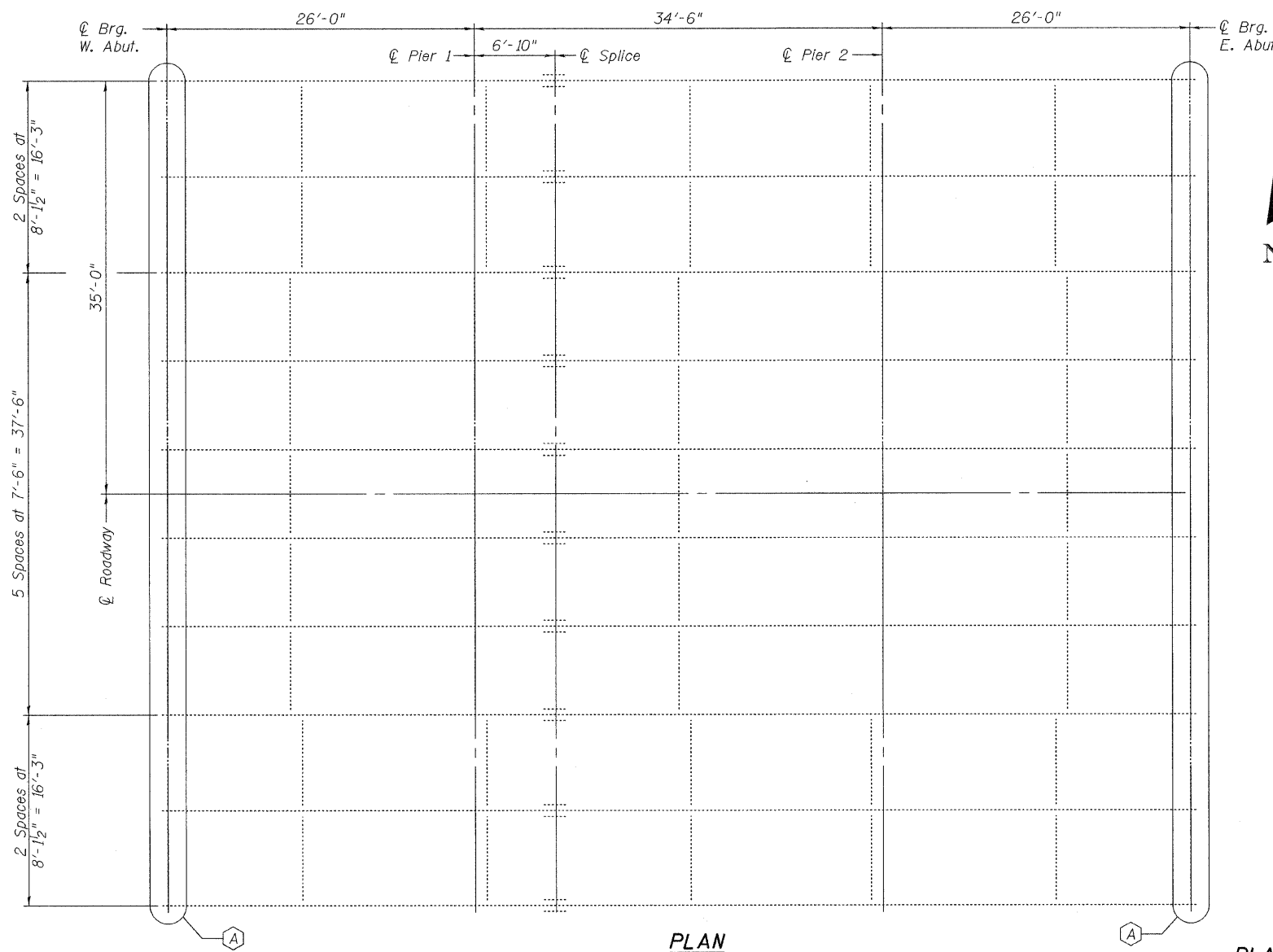
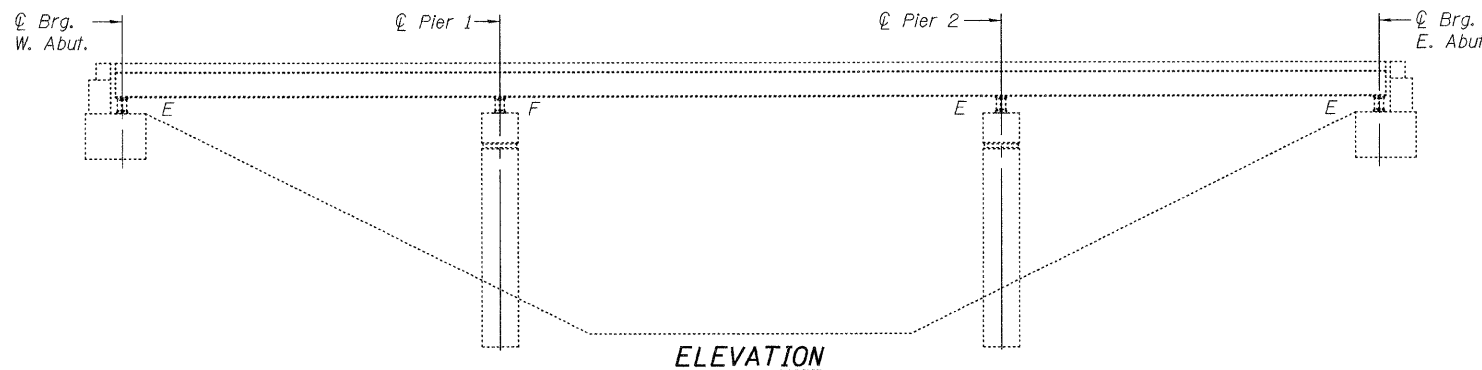


GENERAL NOTES

STATE OF ILLINOIS
DEPARTMENT OF TRANSPORTATION

All structural steel shall conform to AASHTO Classification M-270 Gr. 36, unless otherwise noted.
Plan dimensions and details relative to existing plans are subject to nominal construction variations. The Contractor shall field verify existing dimensions and details affecting new construction and make necessary approved adjustments prior to construction or ordering of materials. Such variations shall not be cause for additional compensation for a change in scope of the work, however, the Contractor will be paid for the quantity actually furnished at the unit price bid for the work.
Cost of removal and re-installation of all members necessary to complete the work as detailed on the plans and as specified in the Special Provisions shall be included with Furnishing and Erecting Structural Steel.

All structural steel shall be shop painted with the inorganic zinc rich primer per AASHTO M300, Type 1. Cost included with Furnishing and Erecting Structural Steel.



TOTAL BILL OF MATERIAL

Item	Unit	Total
Elastomeric Bearing Assembly, Type I	Each	20
Jack and Remove Existing Bearings	Each	20
Furnishing and Erecting Structural Steel	Pound	2,320
Anchor Bolts 1"	Each	40

DESIGNED	<i>Victor H. Voliz</i>
CHECKED	<i>John B. ...</i>
DRAWN	<i>...</i>
CHECKED	<i>VHV JAB</i>

March 4, 2010
EXAMINED *R. Cal ...*
PASSED *Ralph E. Anderson*
ENGINEER OF STRUCTURAL SERVICES
ENGINEER OF BRIDGES AND STRUCTURES



Expires: November 30, 2010

PLAN

(A) Existing bearings to be removed and replaced

PLAN AND ELEVATION
SN 058-0112

SHEET NO. 1 2 SHEETS	F.A. RTE.	SECTION	COUNTY	TOTAL SHEETS	SHEET NO.
	714	48X-2(W,RS), 128(W-1,RS-2) & 128BY	Macon	100	95
FED. ROAD DIST. NO.			ILLINOIS	FED. AID PROJECT	
			CONTRACT NO. 74405		