

**STATE OF ILLINOIS
DEPARTMENT OF TRANSPORTATION
DIVISION OF HIGHWAYS**

**PROPOSED
HIGHWAY PLANS**

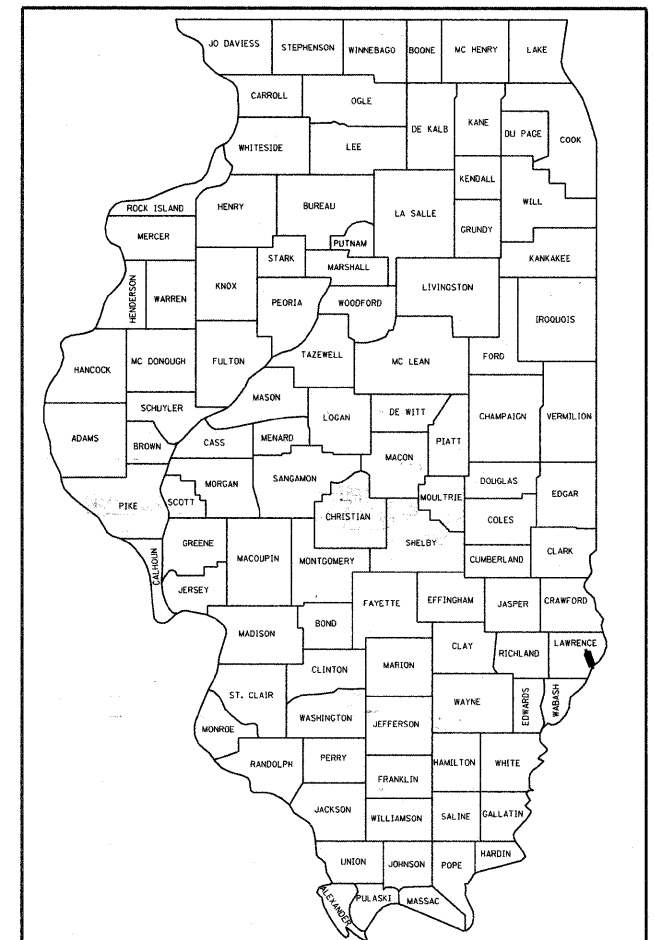
**F.A.P. ROUTE 783 (IL. RTE. 33)
SECTION (51-24-2,1-2)RS-1 & (1-X-1)RS-3**

**RESURFACING (3P)
LAWRENCE COUNTY
C-97-128-09**

F.A.P. RTE.	SECTION	COUNTY	TOTAL SHEETS	SHEET NO.
783		LAWRENCE	42	1
		ILLINOIS	CONTRACT NO. 74414	

• (51-24-2,1-2)RS-1 & (1-X-1)RS-3

D-97-072-09



LOCATION OF SECTION INDICATED THUS: - ■ -



FOR INDEX OF SHEETS, SEE SHEET NO. 2

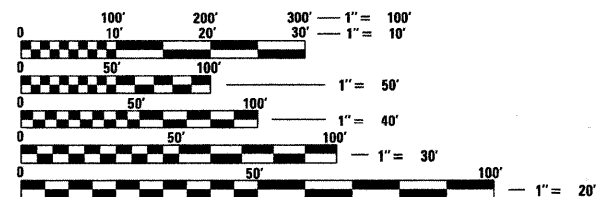
STATION EQUATION:

STA. 427+11.90 (AH) = STA. 25+70.10 (BK)

STA. 2+00.00 (AH) = STA. 376+31.00 (BK)

ADT = 5,200 (2009)

**F.A.P. ROUTE 783 (IL. RTE. 33)
SECTION (51-24-2,1-2)RS-1 & (1-X-1)RS-3
LAWRENCE COUNTY
ENDS STATION 41+40.94**

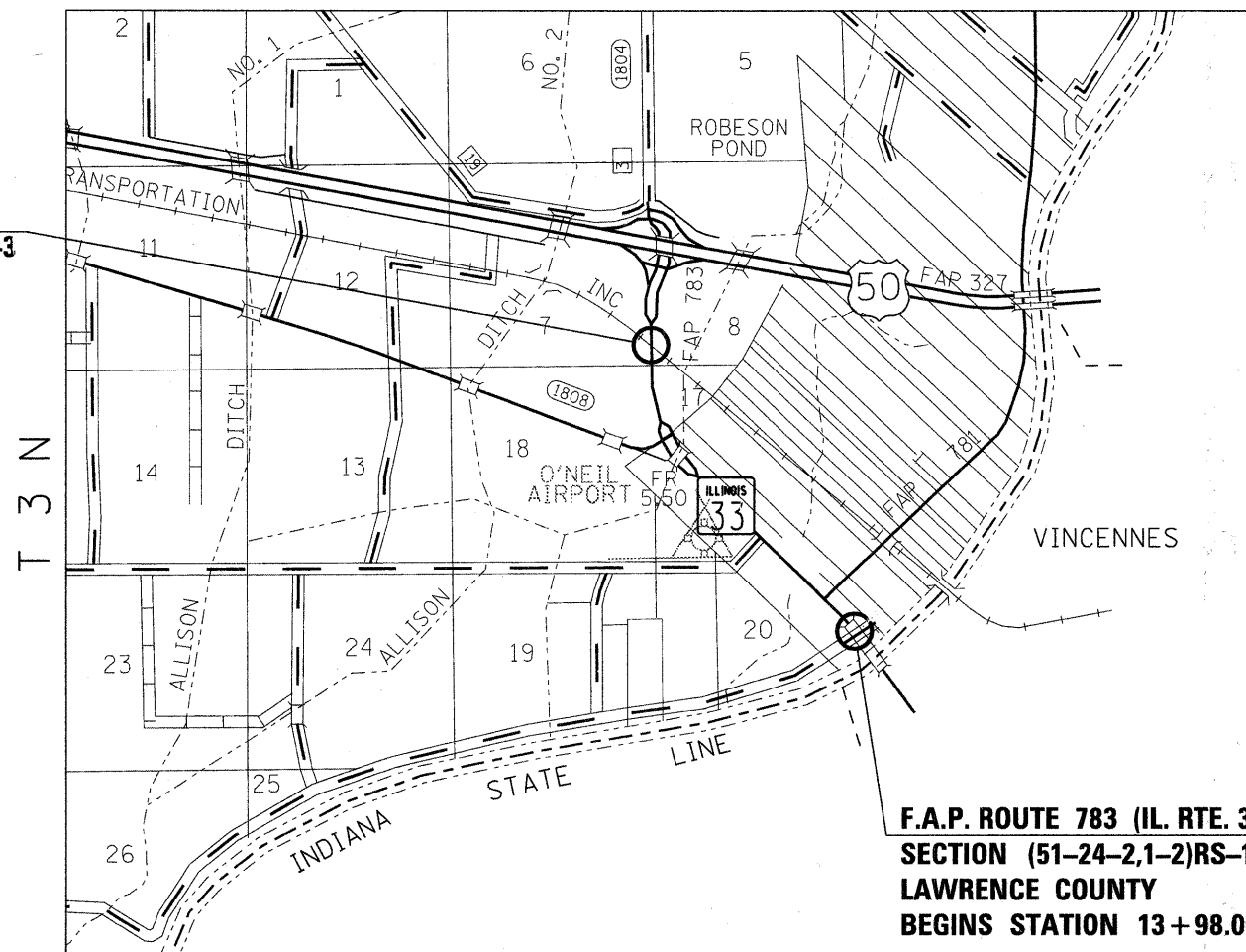


FULL SIZE PLANS HAVE BEEN PREPARED USING STANDARD ENGINEERING SCALES. REDUCED SIZED PLANS WILL NOT CONFORM TO STANDARD SCALES. IN MAKING MEASUREMENTS ON REDUCED PLANS, THE ABOVE SCALES MAY BE USED.

J.U.L.I.E.
JOINT UTILITY LOCATION INFORMATION FOR EXCAVATION
1-800-892-0123
OR 811

PROJECT ENGINEER: TOM RONAN
PROJECT MANAGER: LUKE WASSON

CONTRACT NO. 74414



**F.A.P. ROUTE 783 (IL. RTE. 33)
SECTION (51-24-2,1-2)RS-1 & (1-X-1)RS-3
LAWRENCE COUNTY
BEGINS STATION 13+98.00**

R 10 W

GROSS LENGTH = 9,943 FT. = 1.88 MILE
NET LENGTH = 9,943 FT. = 1.88 MILE

STATE OF ILLINOIS
DEPARTMENT OF TRANSPORTATION
DIVISION OF HIGHWAYS

SUBMITTED January 29, 2010

Regan L. Seibel
DEPUTY DIRECTOR OF HIGHWAYS, REGION ENGINEER

March 19, 2010

Scott E. Stitt, P.E.
AGENCY ENGINEER OF DESIGN AND ENVIRONMENT

March 19, 2010

Christine M. Reed
DIRECTOR OF HIGHWAYS, CHIEF ENGINEER

**PRINTED BY THE AUTHORITY
OF THE STATE OF ILLINOIS**