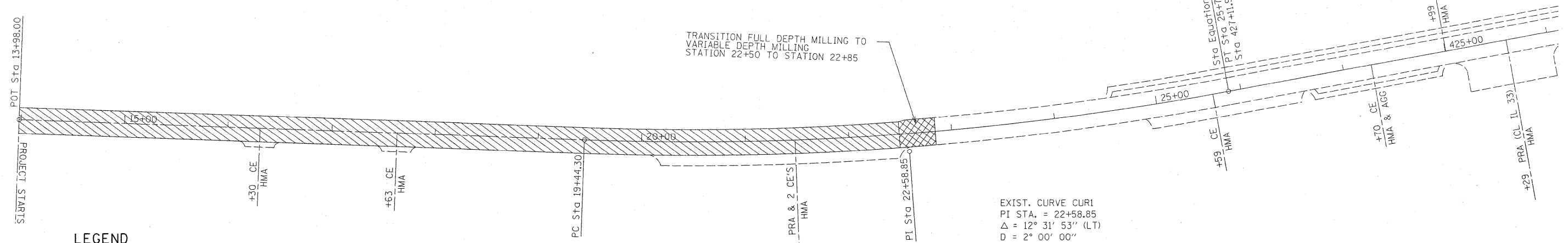
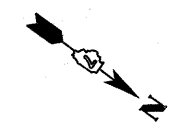


NOTE: STATIONING RUNS BACKWARDS FROM STATION EQUATION:
 25+70.90 (BK) = 427+11.90 (AH)
 TO STATION EQUATION:
 376+31.00 (BK) = 2+00.00 (AH)

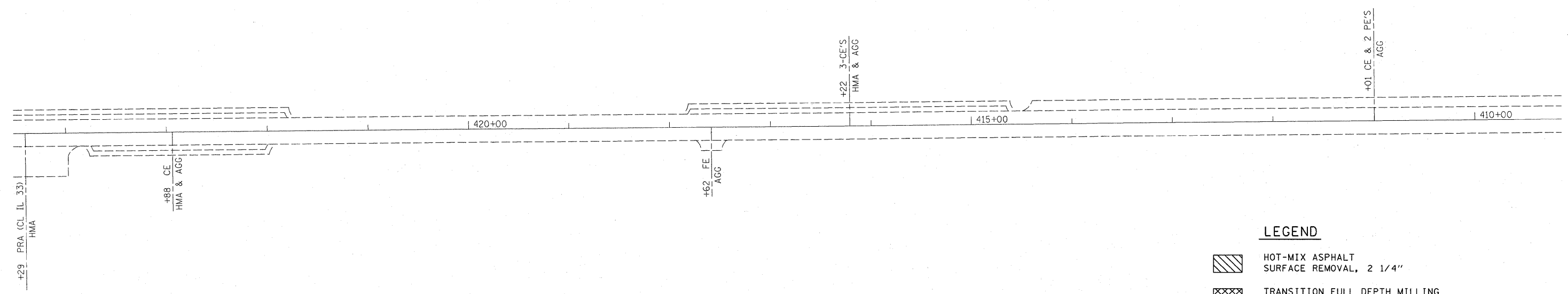
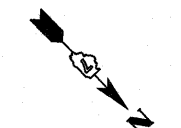


LEGEND

- HOT-MIX ASPHALT SURFACE REMOVAL, 2 1/4"
- TRANSITION FULL DEPTH MILLING TO VARIABLE DEPTH MILLING
- HOT-MIX ASPHALT SURFACE REMOVAL - BUTT JOINT

EXIST. CURVE CUR1
 PI STA. = 22+58.85
 $\Delta = 12^\circ 31' 53''$ (LT)
 $D = 2^\circ 00' 00''$
 $R = 2,864.90'$
 $T = 314.55'$
 $L = 626.60'$
 $E = 17.22'$
 $e = \text{-----}$
 $T.R. = \text{-----}$
 $S.E. RUN = \text{-----}$
 $P.C. STA. = 19+44.30$
 $P.T. STA. = 25+70.90$

NOTE: STATIONING RUNS BACKWARDS FROM STATION EQUATION:
 25+70.90 (BK) = 427+11.90 (AH)
 TO STATION EQUATION:
 376+31.00 (BK) = 2+00.00 (AH)



LEGEND

- HOT-MIX ASPHALT SURFACE REMOVAL, 2 1/4"
- TRANSITION FULL DEPTH MILLING TO VARIABLE DEPTH MILLING
- HOT-MIX ASPHALT SURFACE REMOVAL - BUTT JOINT

FILE NAME =	USER NAME = swartzrw	DESIGNED -	REVISED -
ca\pwwork\pwwork\SWARTZRW\08148574\07	4414-sht-plan.dgn	DRAWN -	REVISED -
	PLOT SCALE = 50.0000' / IN.	CHECKED -	REVISED -
	PLOT DATE = 1/29/2010	DATE -	REVISED -

**STATE OF ILLINOIS
 DEPARTMENT OF TRANSPORTATION**

PLANS SHEETS

SCALE: 50 SHEET NO. 1 OF 4 SHEETS STA. 13+98 TO STA. 410+00

(51-24-2,1-2)RS-1 & (1-X-1)RS-3

F.A.P. RTE.	SECTION	COUNTY	TOTAL SHEETS	SHEET NO.
783		LAWRENCE	42	15
			CONTRACT NO. 74414	
ILLINOIS FED. AID PROJECT				