

F.A.P. RTE.	SECTION	COUNTY	TOTAL SHEETS	SHEET NO.
824	D7 SIGNAL MOD 2010-1	COLES	4	1
		ILLINOIS	CONTRACT NO. 74445	

STATE OF ILLINOIS
DEPARTMENT OF TRANSPORTATION
DIVISION OF HIGHWAYS

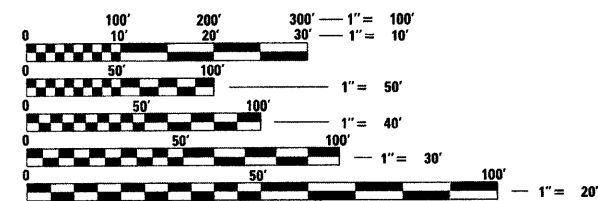
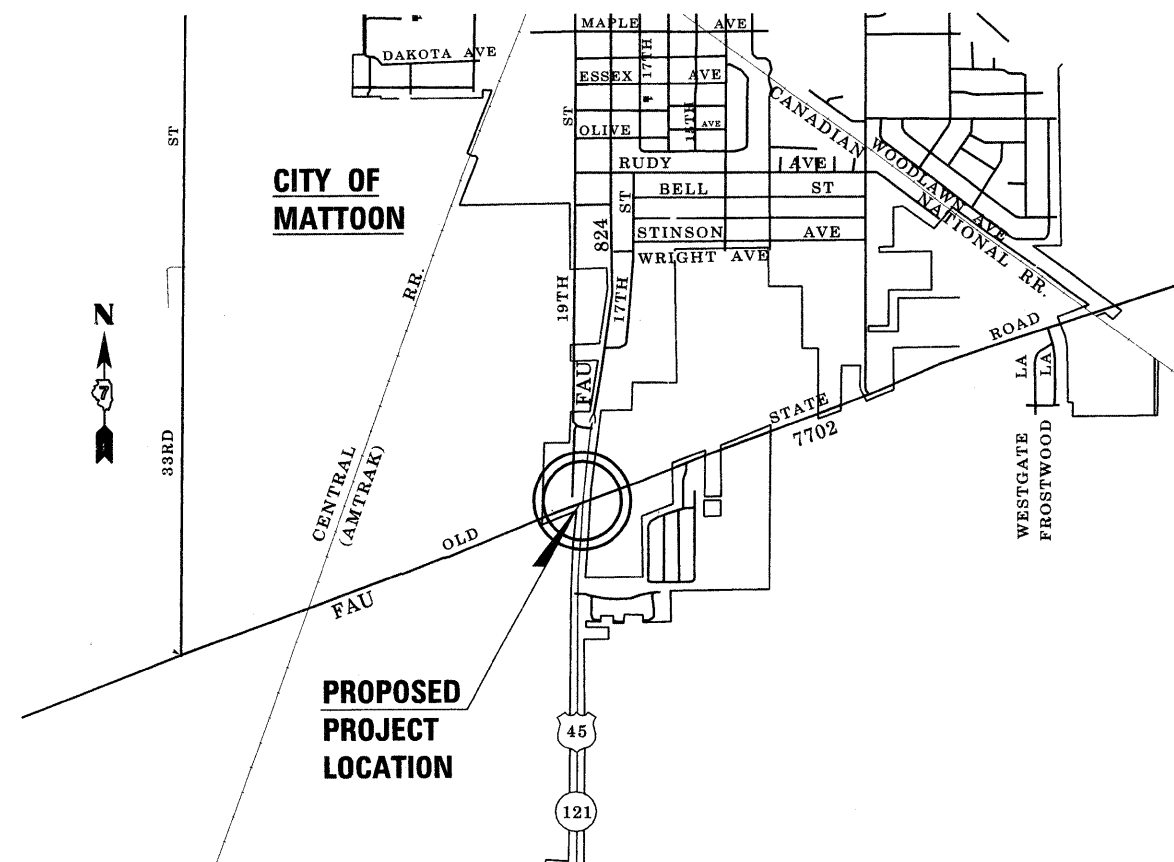
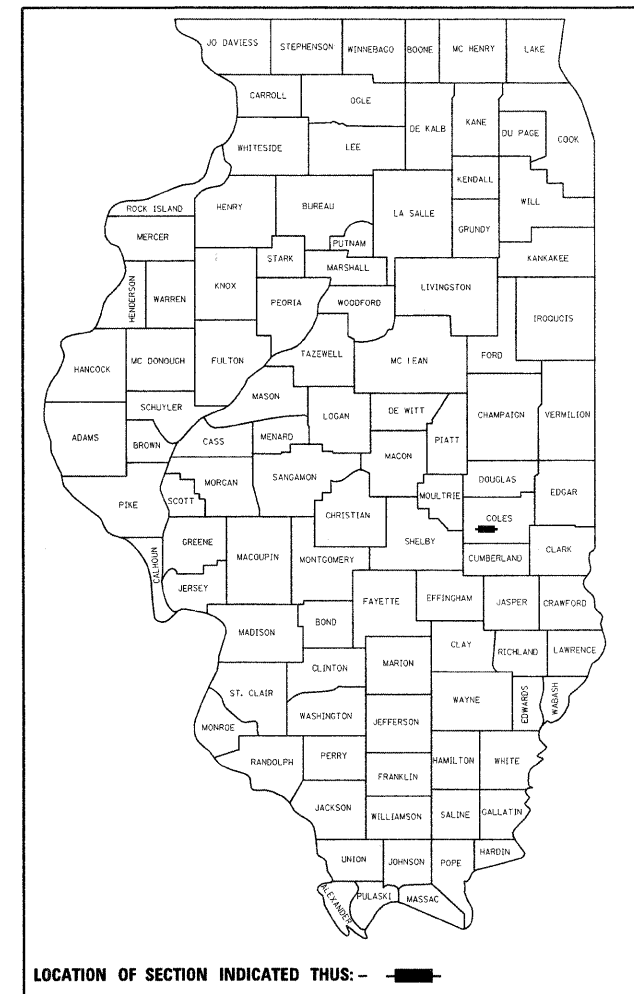
**PROPOSED
HIGHWAY PLANS**

FAP ROUTE 824 (IL 121/US 45)
SECTION D7 SIGNAL MODERNIZATION 2010-1
PROJECT: HSIP-0824(019)

FOR INDEX OF SHEETS, SEE SHEET NO. 2

COLES COUNTY

C-97-056-10



FULL SIZE PLANS HAVE BEEN PREPARED USING STANDARD ENGINEERING SCALES. REDUCED SIZED PLANS WILL NOT CONFORM TO STANDARD SCALES. IN MAKING MEASUREMENTS ON REDUCED PLANS, THE ABOVE SCALES MAY BE USED.

J.U.L.I.E.
JOINT UTILITY LOCATION INFORMATION FOR EXCAVATION
1-800-892-0123
OR 811

PROJECT ENGINEER ROB MACKLIN
PROJECT MANAGER LYNN McCLELLAN

GROSS LENGTH = N/A FT. = N/A MILE
NET LENGTH = N/A FT. = N/A MILE

CONTRACT NO. 74445

STATE OF ILLINOIS
DEPARTMENT OF TRANSPORTATION
DIVISION OF HIGHWAYS

SUBMITTED January 29 2010
Roger L. Sindell
DEPUTY DIRECTOR OF HIGHWAYS, REGION ENGINEER

March 19 2010
Scott E. Stitt, P.E.
ACTING ENGINEER OF DESIGN AND ENVIRONMENT

March 19 2010
Christine M. Reed, P.E.
DIRECTOR OF HIGHWAYS, CHIEF ENGINEER

**PRINTED BY THE AUTHORITY
OF THE STATE OF ILLINOIS**