

F.A.P. RTE.	SECTION	COUNTY	TOTAL SHEETS	SHEET NO.
824	D7 SIGNAL MOD 2010-1	COLES	4	1
		ILLINOIS	CONTRACT NO. 74445	

STATE OF ILLINOIS
DEPARTMENT OF TRANSPORTATION
DIVISION OF HIGHWAYS

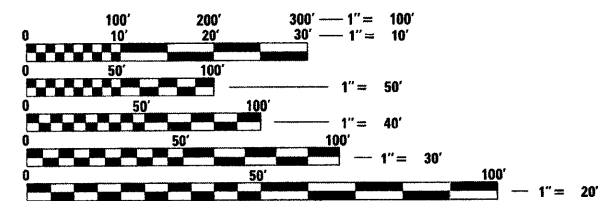
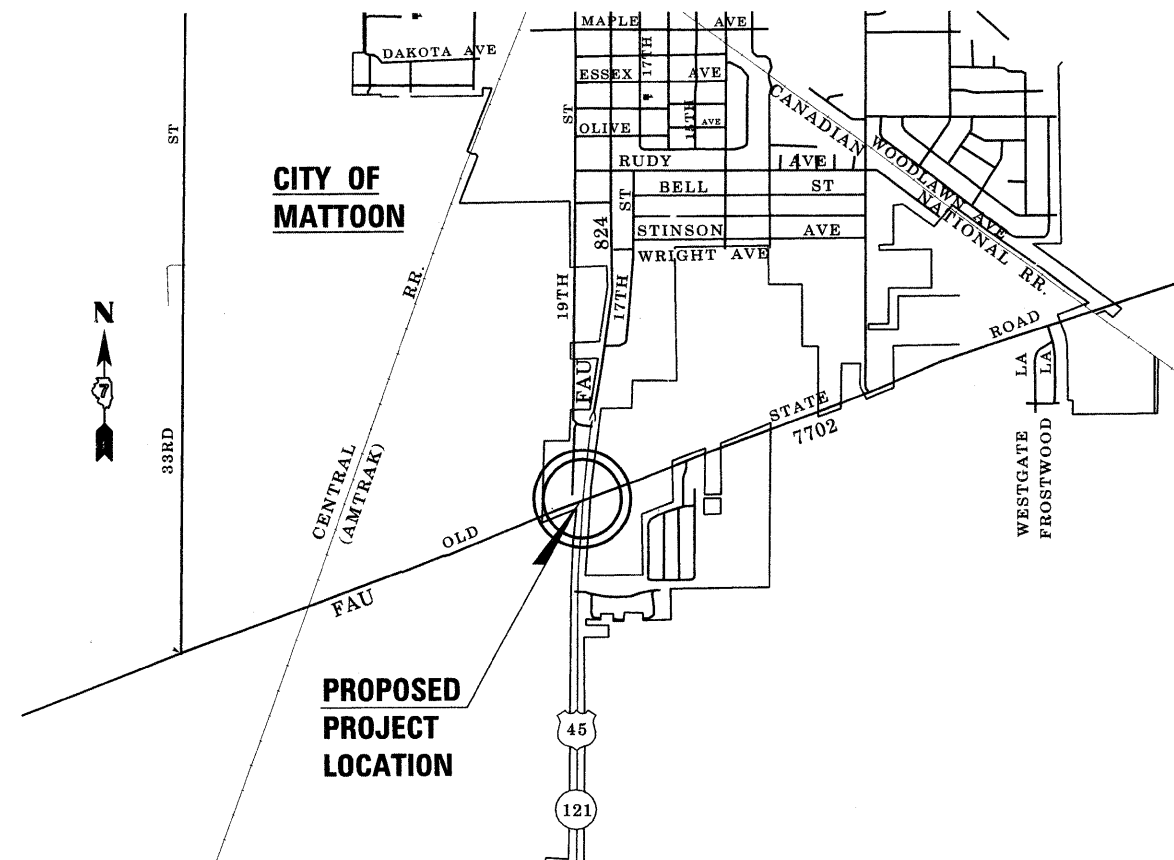
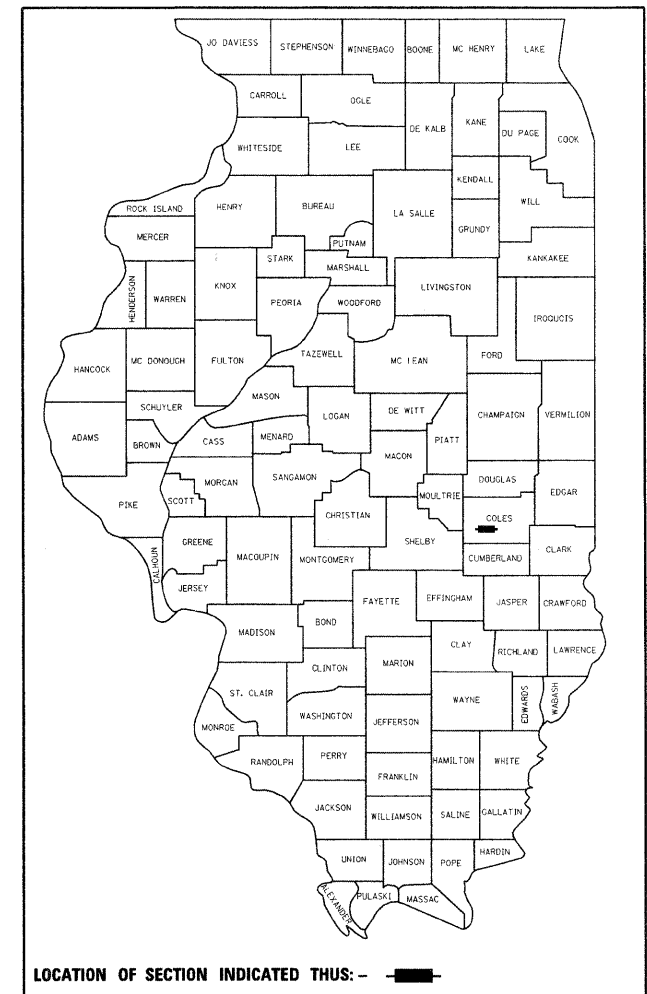
**PROPOSED
HIGHWAY PLANS**

FAP ROUTE 824 (IL 121/US 45)
SECTION D7 SIGNAL MODERNIZATION 2010-1
PROJECT: HSIP-0824(019)

FOR INDEX OF SHEETS, SEE SHEET NO. 2

COLES COUNTY

C-97-056-10



FULL SIZE PLANS HAVE BEEN PREPARED USING STANDARD ENGINEERING SCALES. REDUCED SIZED PLANS WILL NOT CONFORM TO STANDARD SCALES. IN MAKING MEASUREMENTS ON REDUCED PLANS, THE ABOVE SCALES MAY BE USED.

J.U.L.I.E.
JOINT UTILITY LOCATION INFORMATION FOR EXCAVATION
1-800-892-0123
OR 811

PROJECT ENGINEER ROB MACKLIN
PROJECT MANAGER LYNN McCLELLAN

GROSS LENGTH = N/A FT. = N/A MILE
NET LENGTH = N/A FT. = N/A MILE

CONTRACT NO. 74445

STATE OF ILLINOIS
DEPARTMENT OF TRANSPORTATION
DIVISION OF HIGHWAYS

SUBMITTED January 29 2010
Roger L. Sindell
DEPUTY DIRECTOR OF HIGHWAYS, REGION ENGINEER

March 19 2010
Scott E. Stitt, P.E.
ACTING ENGINEER OF DESIGN AND ENVIRONMENT

March 19 2010
Christine M. Reed, P.E.
DIRECTOR OF HIGHWAYS, CHIEF ENGINEER

**PRINTED BY THE AUTHORITY
OF THE STATE OF ILLINOIS**

GENERAL NOTES

THIS SECTION SHALL BE CONSTRUCTED IN ACCORDANCE WITH THE PLANS; THE "STANDARD SPECIFICATIONS FOR ROAD AND BRIDGE CONSTRUCTION" ADOPTED JANUARY 1, 2007; THE "SUPPLEMENTAL SPECIFICATIONS AND RECURRING SPECIAL PROVISIONS" ADOPTED JANUARY 1, 2010; AND THE SPECIAL PROVISIONS INCLUDED IN THE PROPOSAL.

THIS PROJECT IS LOCATED ALONG IL 121/US45 IN THE CITY OF MATTOON IN DISTRICT 7 WITHIN THE COUNTY OF COLES. THIS PROJECT CONSISTS OF THE REMOVAL AND REPLACEMENT OF 2 EXISTING TRAFFIC SIGNAL HEADS, THE INSTALLATION OF 2 PROPOSED TRAFFIC SIGNAL HEADS, BACKPLATES FOR ALL EXISTING TRAFFIC SIGNAL HEADS AND THE RELOCATION OF 4 MAST ARM MOUNTED TRAFFIC SIGNAL HEADS ALL AT THE INTERSECTION OF IL 121/US 45 AND OLD STATE ROAD IN MATTOON.

THE EXISTING TRAFFIC SIGNALS SHALL REMAIN IN OPERATION DURING THE CONSTRUCTION OF THE PROPOSED TRAFFIC SIGNALS.

IT IS PERMISSIBLE TO PLACE THE INTERSECTION INTO ALL RED FLASH TO FACILITATE THE INSTALLATION OF THE LED TRAFFIC SIGNAL HEADS AS DIRECTED BY THE ENGINEER.

THE HOLES LEFT IN THE MAST ARMS FROM THE RELOCATION OF THE TRAFFIC SIGNAL HEADS SHALL BE PLUGGED WITH A RUBBER GROMMET TO PREVENT MOISTURE INTO THE MAST ARM.

THIS WORK SHALL BE DONE IN ACCORDANCE WITH THE APPLICABLE PORTION OF SECTION 895 OF THE STANDARD SPECIFICATIONS. THE 2 EXISTING TRAFFIC SIGNAL HEADS TO BE REMOVED SHALL BECOME THE PROPERTY OF THE CITY OF MATTOON. THE CONTRACTOR SHALL SAVE HARMLESS AND DELIVER THE EQUIPMENT TO:

CITY OF MATTOON PUBLIC WORKS
 DAVID WORTMAN, DIRECTOR OF PUBLIC WORKS
 217-235-5460 (WORK)
 217-254-6054 (MOBILE)
 EMAIL: WortmanD@mattoon1111nois.org

INDEX OF SHEETS

SHEET NO	TITLE
1	COVER SHEET
2	INDEX OF SHEETS & GENERAL NOTES
3	SUMMARY OF QUANTITIES
4	PLAN SHEET

THE FOLLOWING STANDARDS ARE A PART OF THESE PLANS AND ARE INCLUDED FOLLOWING SHEET NO. 4 OF THE PLANS:

000001-0-5	STANDARD SYMBOLS, ABBREVIATIONS, AND PATTERNS
701006-03	OFF-ROAD OPERATIONS 2L, 2W 4.5 M (15') TO PAVEMENT EDGE FOR SPEEDS \geq 45 MPH
701101-02	OFF-ROAD OPERATIONS, MULTILANE, 15' TP 2' FROM EDGE OF PAVEMENT
701701-06	URBAN LANE CLOSURE MULTILANE INTERSECTION
701901-01	TRAFFIC CONTROL DEVICES
880006-01	TRAFFIC SIGNAL MOUNTING DETAILS

SUMMARY OF QUANTITIES			90% FED - 10% STATE	CONSTRUCTION TYPE CODE		
CODE NO	ITEM	UNIT	TOTAL QUANTITIES	Y031-1F		
67100100	MOBILIZATION	L SUM	1	1		
70102635	TRAFFIC CONTROL AND PROTECTION, STANDARD 701701	L SUM	1	1		
87301255	ELECTRIC CABLE IN CONDUIT, SIGNAL NO. 14 7C	FOOT	539	539		
88040110	SIGNAL HEAD, POLYCARBONATE, LED, 1-FACE, 4-SECTION, BRACKET MOUNTED	EACH	2	2		
88040120	SIGNAL HEAD, POLYCARBONATE, LED, 1-FACE, 4-SECTION, MAST ARM MOUNTED	EACH	2	2		
88200400	TRAFFIC SIGNAL BACKPLATE, FORMED PLASTIC	EACH	18	18		
89500100	RELOCATE EXISTING SIGNAL HEAD	EACH	4	4		
89502210	MODIFY EXISTING CONTROLLER CABINET	EACH	1	1		
89502375	REMOVE EXISTING TRAFFIC SIGNAL EQUIPMENT	EACH	1	1		

FILE NAME =	USER NAME = mcslellania	DESIGNED -	REVISED -
c:\pwwork\pwwid01\MCCLELLANLA\0177475	0774445-Geom.dgn	DRAWN -	REVISED -
PLOT SCALE = 20.0000 "/ IN.	CHECKED -	REVISIONS -	REVISED -
PLOT DATE = 1/29/2010	DATE -		REVISED -

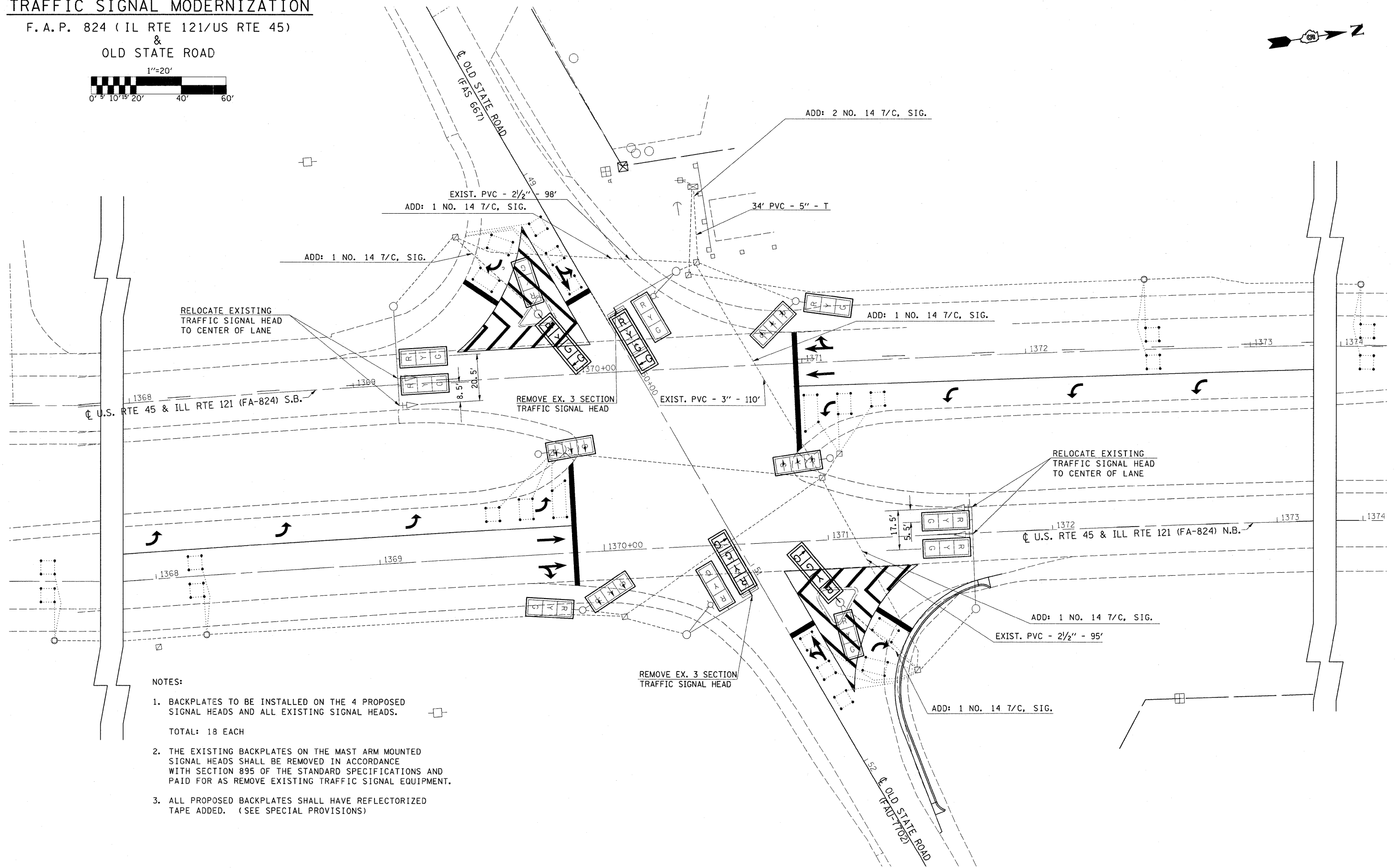
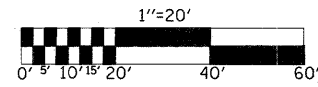
**STATE OF ILLINOIS
DEPARTMENT OF TRANSPORTATION**

SUMMARY OF QUANTITIES	
SCALE:	SHEET NO. OF SHEETS

F.A.P. RTE.	SECTION	COUNTY	TOTAL SHEETS	SHEET NO.
824	DT SIGNAL MOD, 2010-1	COLES	4	3
CONTRACT NO. 74445				

TRAFFIC SIGNAL MODERNIZATION

F.A.P. 824 (IL RTE 121/US RTE 45)
&
OLD STATE ROAD



NOTES:

1. BACKPLATES TO BE INSTALLED ON THE 4 PROPOSED SIGNAL HEADS AND ALL EXISTING SIGNAL HEADS.
TOTAL: 18 EACH
2. THE EXISTING BACKPLATES ON THE MAST ARM MOUNTED SIGNAL HEADS SHALL BE REMOVED IN ACCORDANCE WITH SECTION 895 OF THE STANDARD SPECIFICATIONS AND PAID FOR AS REMOVE EXISTING TRAFFIC SIGNAL EQUIPMENT.
3. ALL PROPOSED BACKPLATES SHALL HAVE REFLECTORIZED TAPE ADDED. (SEE SPECIAL PROVISIONS)

FILE NAME =
ct:\pw_work\VP\DOT\MCCLELLANLA\0177475

USER NAME = mcolellanla
D774448-Geom.dgn

DESIGNED -
DRAWN -

REVISED -
REVISED -

PLOT SCALE = 20,0000 / IN.
PLOT DATE = 1/29/2010

CHECKED -
DATE -

REVISED -
REVISED -

**STATE OF ILLINOIS
DEPARTMENT OF TRANSPORTATION**

**IL 121/US 45 & OLD STATE ROAD
PLAN VIEW**

SCALE: SHEET NO. OF SHEETS STA. TO STA.

F.A.P. RTE.	SECTION	COUNTY	TOTAL SHEETS	SHEET NO.
824	07 SIGNAL MOD. 2010-1	COLES	4	4
CONTRACT NO. 74445				

ILLINOIS FED. AID PROJECT