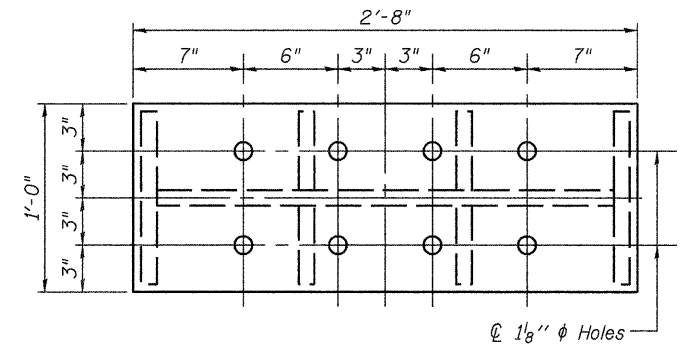
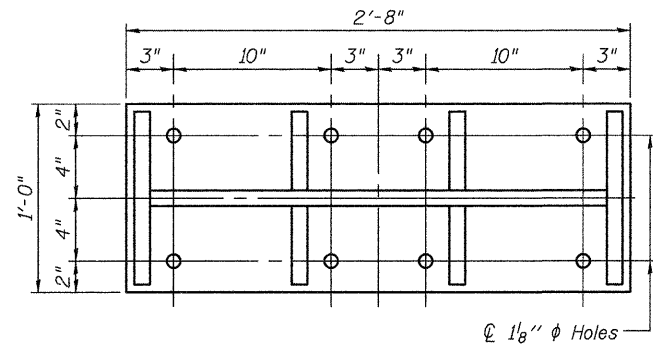
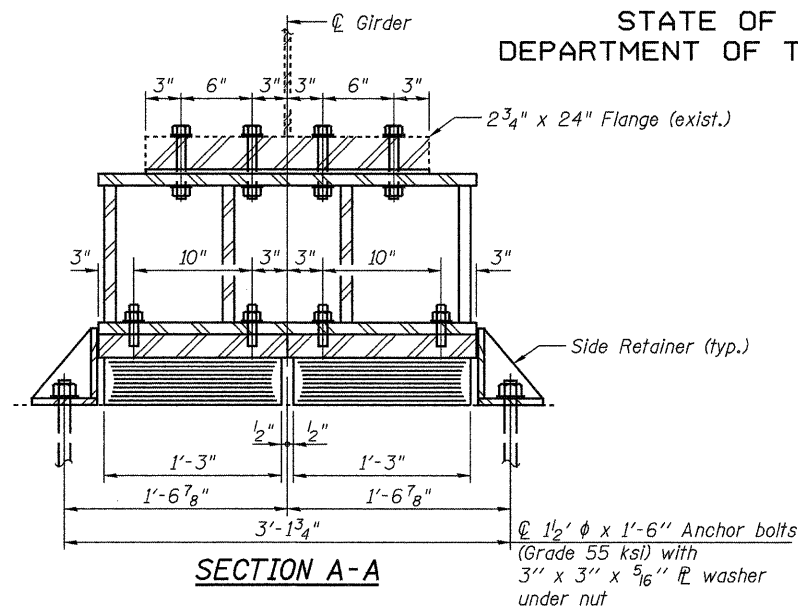
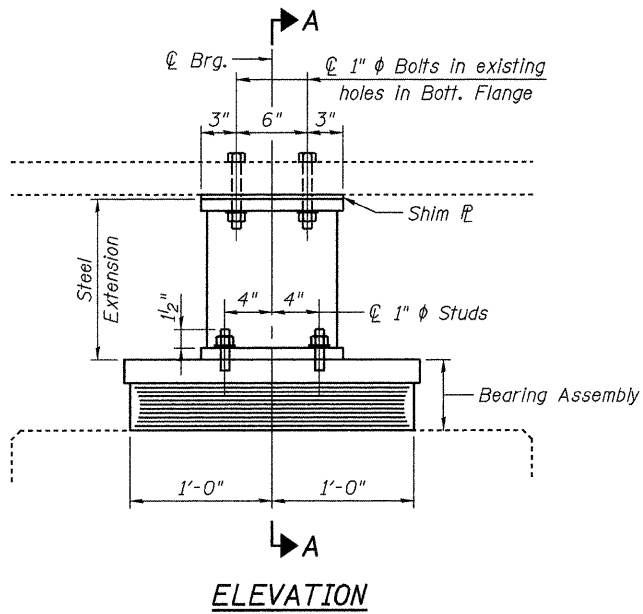
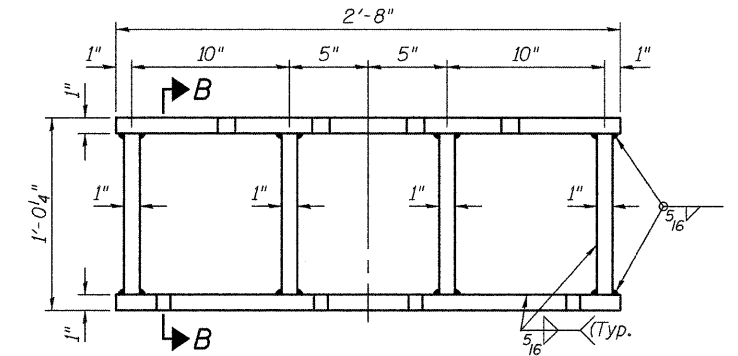
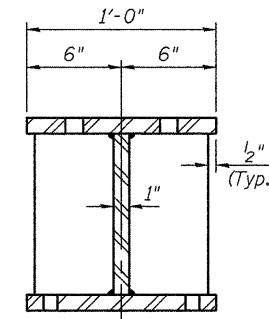


STATE OF ILLINOIS
DEPARTMENT OF TRANSPORTATION



PLAN - BOTTOM

PLAN - TOP



SECTION B-B

ELEVATION

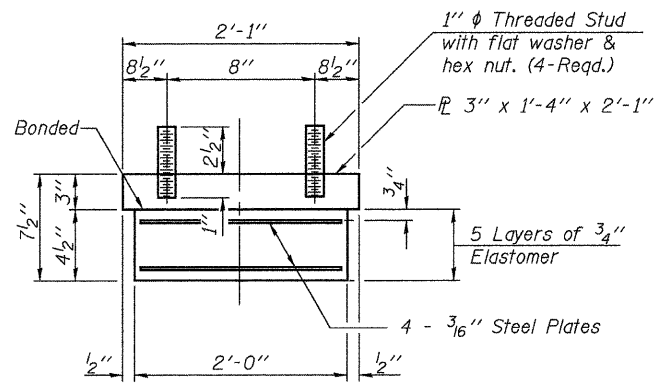
STEEL EXTENSION

TYPE I ELASTOMERIC EXP. BRG.

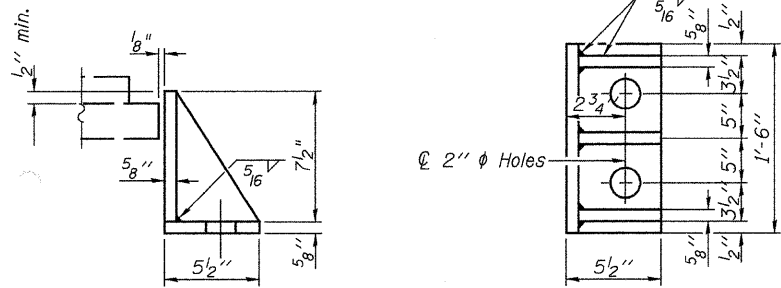
Notes:
Anchor bolts shall be ASTM F1554 all-thread (or an Engineer-approved alternate material) of the grade(s) and diameter(s) specified. ASTM A307 Grade C anchor bolts may be used in lieu of ASTM F1554 Grade 36 (Fy=36ksi). The corresponding specified grade of AASHTO M314 anchor bolts may be used in lieu of ASTM F1554.

Anchor bolts for side retainers shall be installed in holes drilled after members are in place. Drilled and set anchor bolts shall be installed according to Article 521.06 of the Standard Specifications.

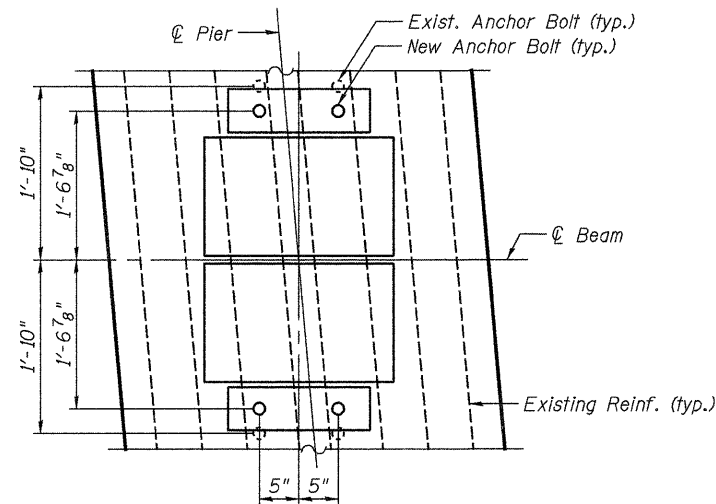
Side retainers and other steel members required for the bearing assembly shall be included in the cost of Elastomeric Bearing Assembly, Type I.



Note:
Shim plates shall not be placed under Bearing Assembly.



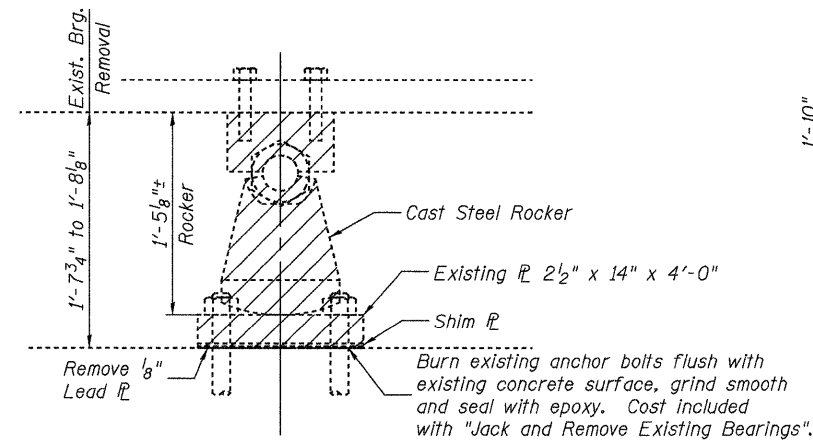
Equivalent rolled angle with stiffeners will be allowed in lieu of welded plates.



Notes:
See Additional Notes on Sheet 10 of 22.

BILL OF MATERIAL

Item	Unit	Total
Jack and Remove Existing Bearings	Each	5
Elastomeric Bearing Assembly Type I	Each	10
Furnishing and Erecting Structural Steel	Pound	2180
Anchor Bolts, 1/2"	Each	20



SHIM THICKNESS TABLE

Location	Girder 1	Girder 2	Girder 3	Girder 4	Girder 5
Pier 3	-	-	-	1/4"	3/8"

INTERIOR GIRDER REACTION TABLE

	Pier 3
R (DL)	(K) 431.0
R (LL)	(K) 160.5
R (Imp)	(K) 24.1
R (Total)	(K) 615.6
Minimum Jack Capacity (Tons)	400

**BEARINGS - PIER 3
STRUCTURE NO. 079-0036**

SHEET 13 OF 22	F.A.P. RTE.	SECTION	COUNTY	TOTAL SHEETS	SHEET NO.
	312	73BR-11	RANDOLPH	51	36
STA. 793+80			CONTRACT NO. 76883		
FED. ROAD DIST. NO. ILLINOIS FED. AID PROJECT					

Johnson, Depp & Quisenberry
CONSULTING ENGINEERS
Springfield, Illinois

DESIGNED: JDQ	DRAWN: PTR
CHECKED: DCD	CHECKED: DCD

I-2E-1

10-1-08 (Modified)