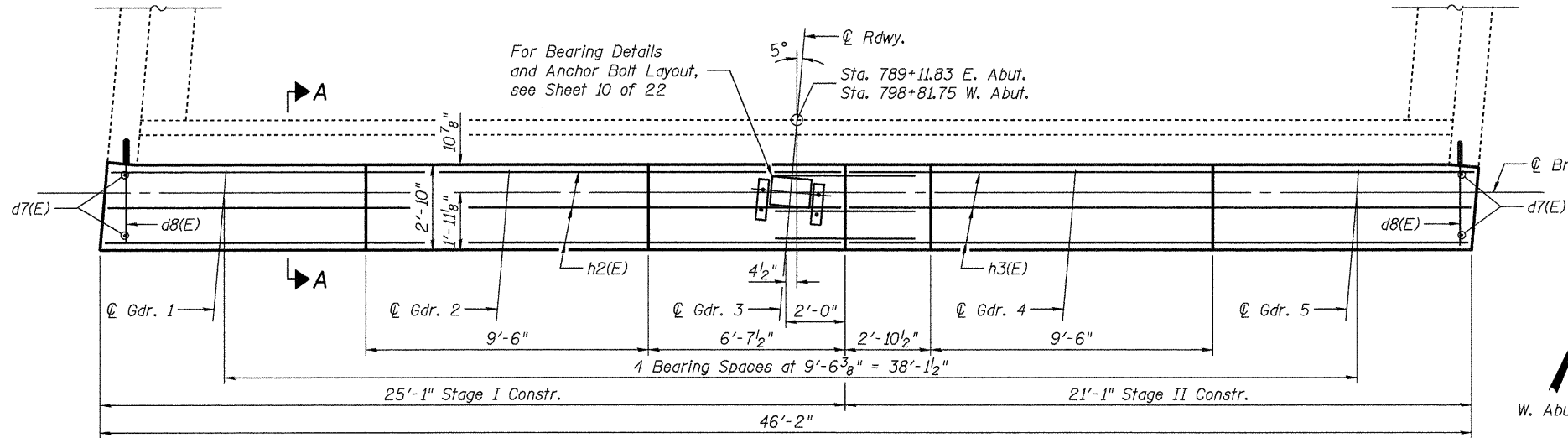
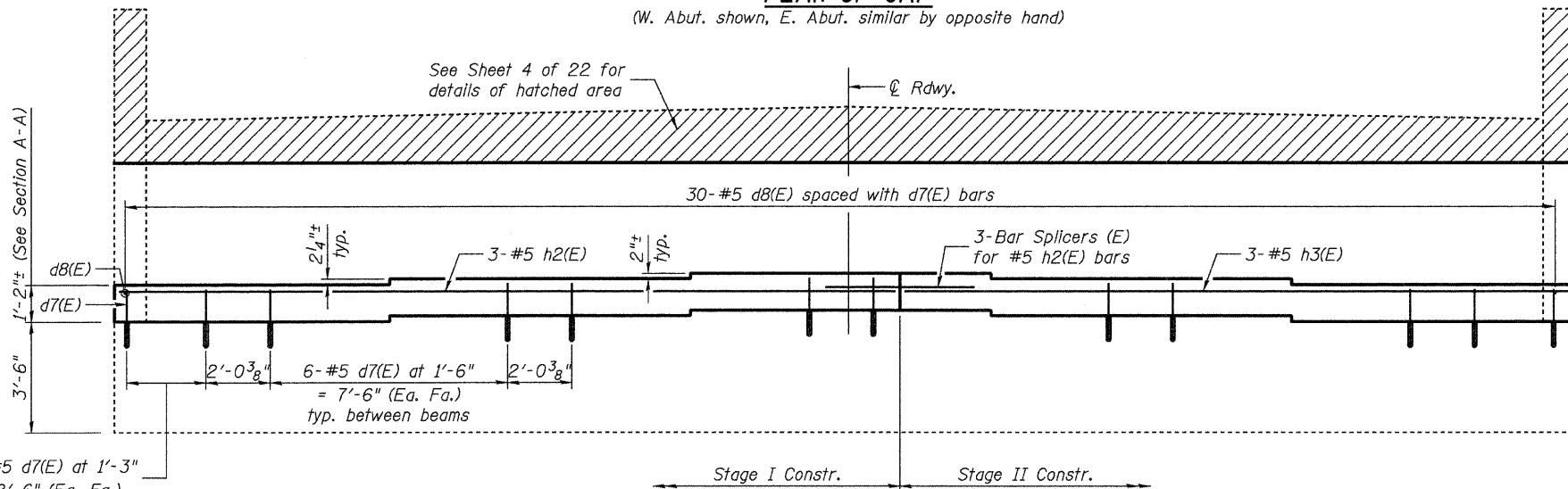


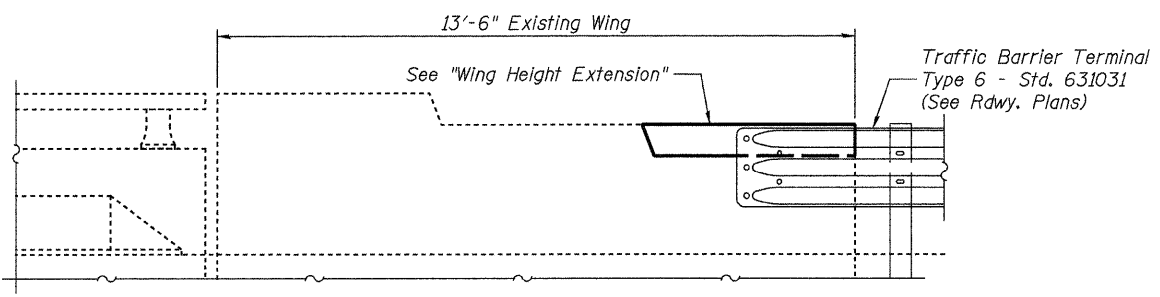
STATE OF ILLINOIS  
DEPARTMENT OF TRANSPORTATION



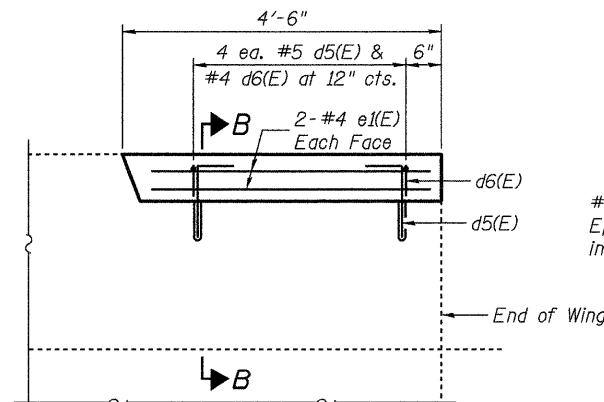
**PLAN OF CAP**  
(W. Abut. shown, E. Abut. similar by opposite hand)



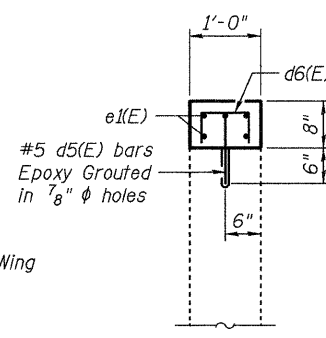
**ELEVATION**



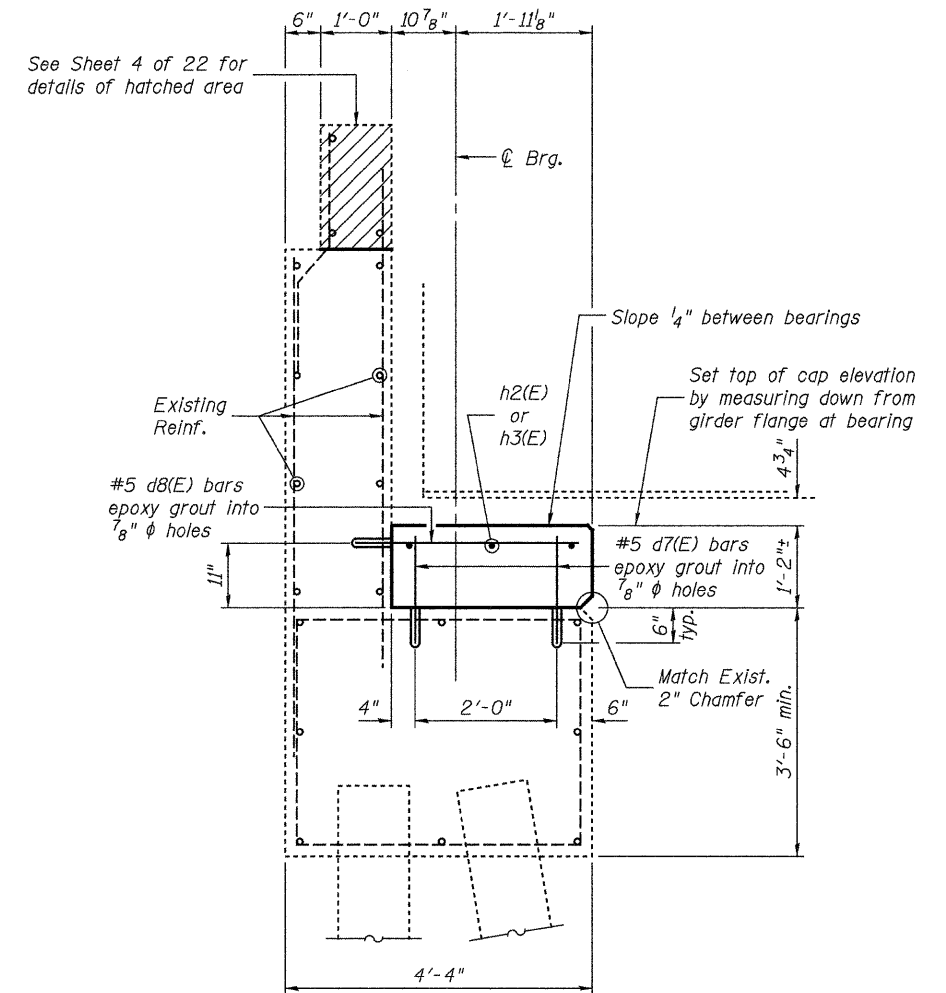
**GUARDRAIL CONNECTION AT ABUT. WINGS**  
(Replace existing guardrail connection)



**WING HEIGHT EXTENSION**



**SECTION B-B**



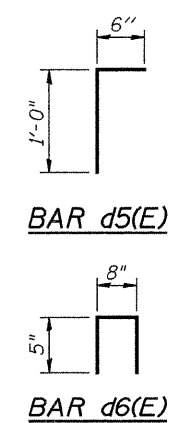
**SECTION A-A**

Note:  
Existing reinforcement shall be cleaned and incorporated into the new construction. Cost included with Concrete Removal.

**BILL OF MATERIAL**

Bar	No.	Size	Length	Shape
d5(E)	8	#5	1'-6"	L
d6(E)	8	#4	1'-6"	Π
d7(E)	60	#5	1'-6"	—
d8(E)	30	#5	3'-2"	—
e1(E)	8	#4	3'-11"	—
h2(E)	3	#5	24'-6"	—
h3(E)	3	#5	20'-9"	—
				E. Abut. W. Abut.
Concrete Structures		Cu. Yd.	5.7	5.7
Reinforcement Bars, Epoxy Coated		Pound	380	380
Concrete Sealer		Sq. Ft.	131	131

Reinforcement Bar list is for one Abutment only. Space cap reinforcement to miss anchor bolts. Apply Concrete Sealer to new beam seat areas (full length of cap).



**JD Johnson, Depp & Quisenberry**  
CONSULTING ENGINEERS  
Springfield, Illinois

DESIGNED: JDQ DRAWN: PTR  
CHECKED: DCD CHECKED: DCD

**EAST & WEST ABUTMENTS**  
**STRUCTURE NO. 079-0036**

SHEET 14 OF 22	F.A.P. RTE. 312	SECTION 73BR-11	COUNTY RANDOLPH	TOTAL SHEETS 51	SHEET NO. 37
		STA. 793+80	CONTRACT NO. 76883		
	FED. ROAD DIST. NO.	ILLINOIS	FED. AID PROJECT		

FILE: J:\JDQ\11075 IL-DBVV#4 IL 3 Kaskaskia River-FINAL\0790036-76883-04-abutts.dgn  
USER: DCD  
DATE: 02/15/2010 11:36:38