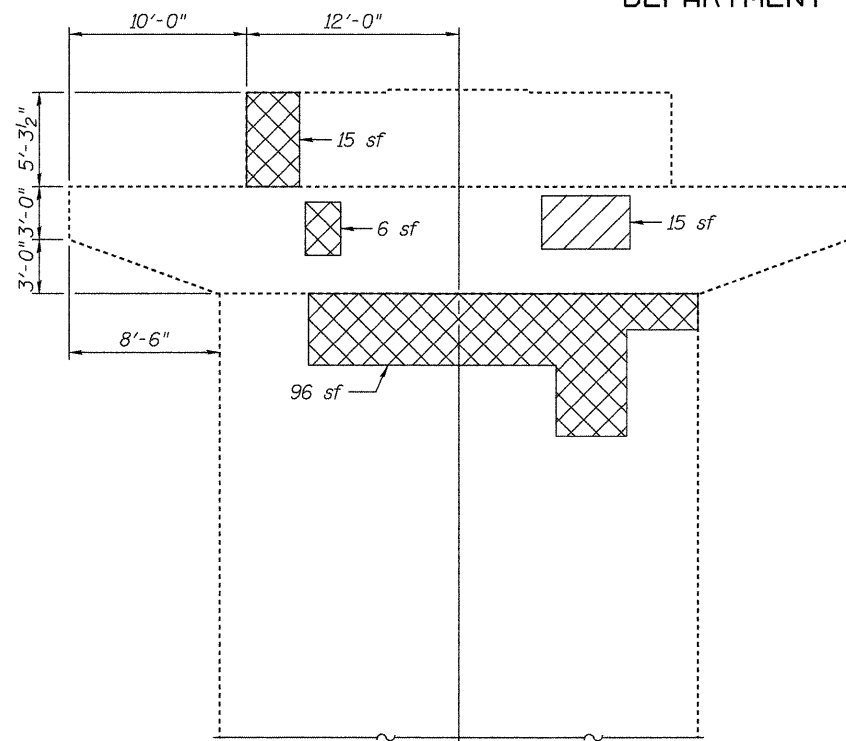
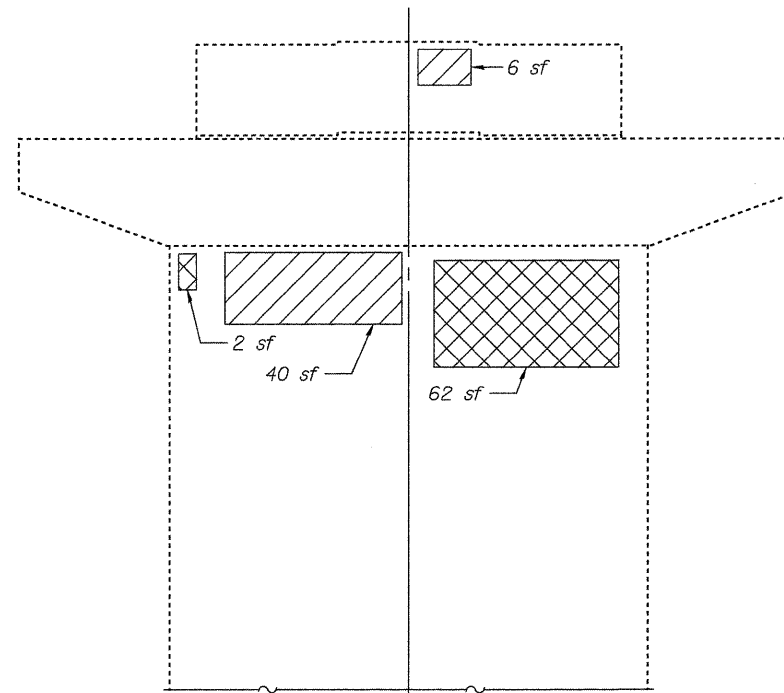


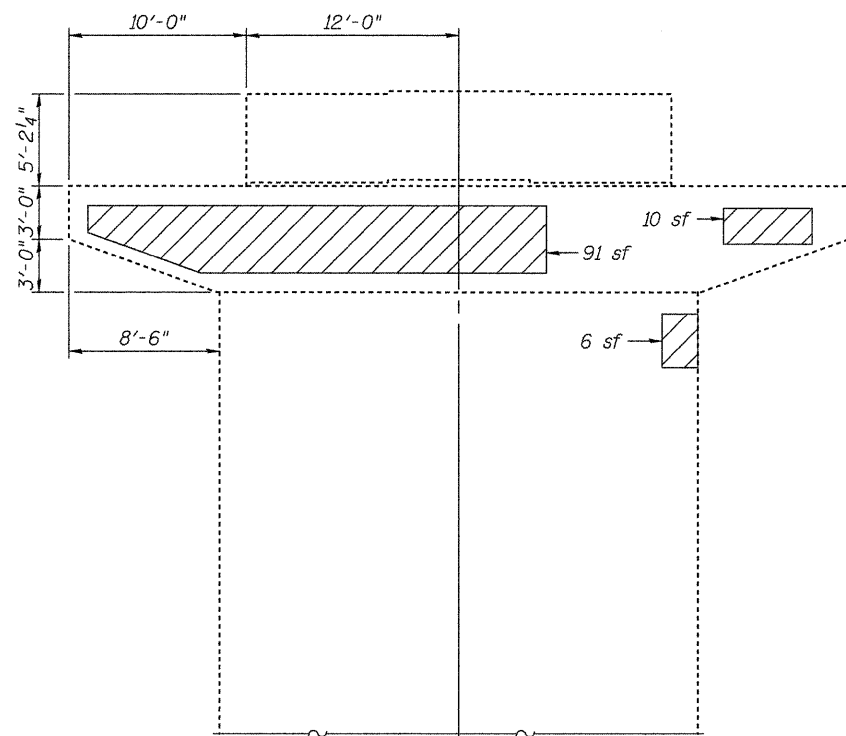
STATE OF ILLINOIS
DEPARTMENT OF TRANSPORTATION



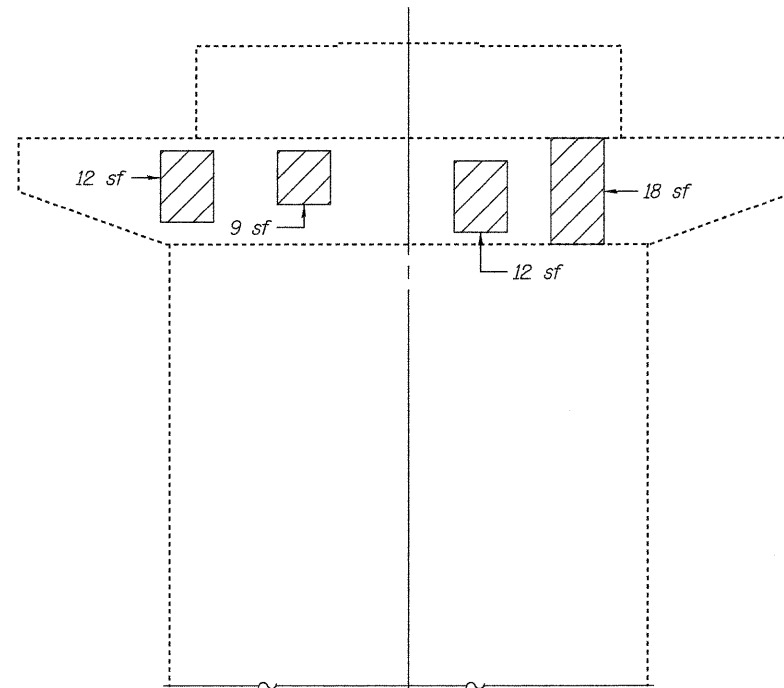
ELEVATION-PIER 2
Facing North-West



ELEVATION-PIER 2
Facing South-East



ELEVATION-PIER 5
Facing North-West



ELEVATION-PIER 5
Facing South-East

LEGEND

- Hollow or Unsound Concrete
- Spalled Concrete with Exposed Rebar

Notes:

Concrete for repair areas on the upper sides of the pier cap that overlap with the proposed pier cap extensions shall be placed monolithically with the cap extensions, to avoid an undesired construction joint.

For repair areas at the top of the pier column/wall just below the cap, if the remaining sound portion of the existing #5 vertical reinforcing does not provide the required minimum lap length below the cap, then replacement reinforcing bars shall be epoxy grouted vertically to provide a minimum embedment of 12" above the bottom of the cap. Epoxy grout for this shall be suitable for "overhead" application.

The Engineer shall record actual repair locations on the As-Built plans.

BILL OF MATERIAL

Item	Unit	Pier 2	Pier 5
Structural Repair of Concrete (Depth = < 5")	Sq. Ft.	242	158

Johnson, Depp & Quisenberry
CONSULTING ENGINEERS
Springfield, Illinois

DESIGNED: JDQ	DRAWN: SJS
CHECKED: DCD	CHECKED: DCD

PIERS 2 & 5 REPAIRS
STRUCTURE NO. 079-0036

SHEET 16 OF 22	F.A.P. RTE.	SECTION	COUNTY	TOTAL SHEETS	SHEET NO.
	312	73BR-II	RANDOLPH	51	39
STA. 793+80			CONTRACT NO. 76883		
FED. ROAD DIST. NO.		ILLINOIS FED. AID PROJECT			