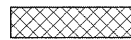
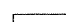




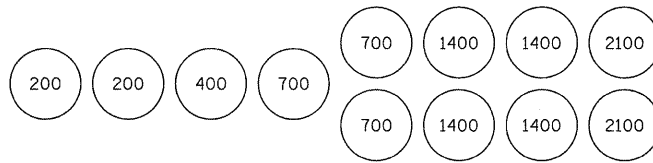


LEGEND

-  IMPACT ATTENUATOR
-  TEMPORARY CONCRETE BARRIER
-  BARRELS WITH STEADY BURNING LIGHT
-  TEMPORARY BRIDGE TRAFFIC SIGNALS
-  TYPE III BARRICADE
-  DIRECTION INDICATOR BARRICADE WITH STEADY BURNING MONODIRECTIONAL LIGHT

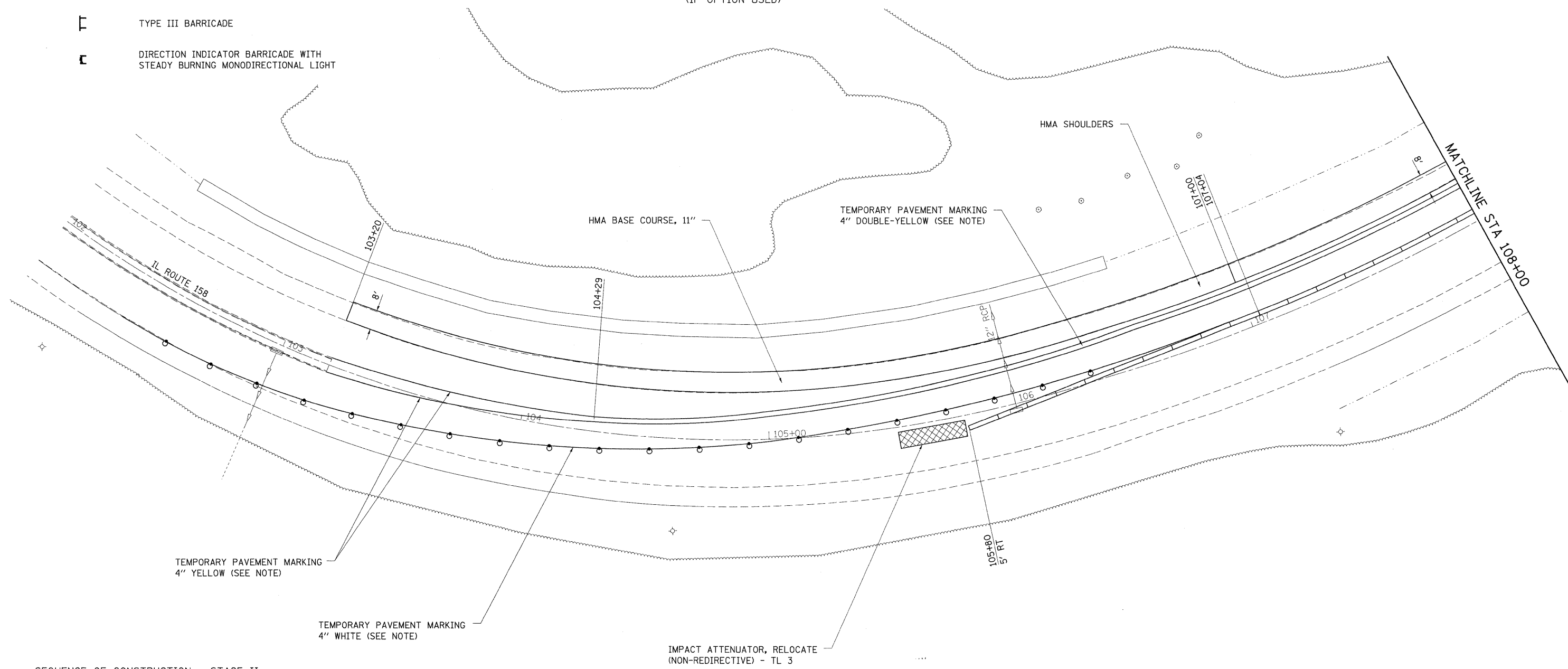


SAND MODULE IMPACT ATTENUATOR LAYOUT (IF OPTION USED)



PLAN	DATE
BY	
SURVEYED	
ALIGNED	
CHECKED	
RT. OF WAY CHECKED	
ADD. FILE NAME	
NOTE BOOK NO.	

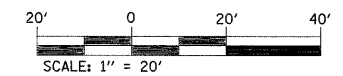
PROFILE	DATE
BY	
SURVEYED	
GRADES CHECKED	
B.M. NOTED	
STRUCTURE NOTATIONS CHKD	
NOTE BOOK NO.	



SEQUENCE OF CONSTRUCTION - STAGE II:

- RELOCATE 1000 FT OF TEMPORARY CONCRETE BARRIER AND RELOCATE 2 EACH IMPACT ATTENUATORS.
- REMOVE TRAFFIC SIGNALS AND STAGE 1 TEMPORARY PAVEMENT MARKING.
- SEE STANDARD 701431 FOR DETAILS NOT SHOWN ON PLANS.
- PERFORM ALL NECESSARY BRIDGE WORK IN STAGE I WORK ZONE.
- PLACE "HMA BINDER COURSE" ON EB LANES AND "HMA SHOULDER" SOUTH SIDE OF ROADWAY BEHIND STAGE II BARRIER.

NOTE:
TEMPORARY PAVEMENT MARKING PLACEMENT AND REMOVAL SHALL BE INCLUDED IN THE COST OF "TRAFFIC CONTROL AND PROTECTION, STANDARD 701431 (SPECIAL)".



FILE NAME =	USER NAME = oxeobj	DESIGNED -	REVISED -	STATE OF ILLINOIS DEPARTMENT OF TRANSPORTATION	STAGE II CONSTRUCTION	F.A.P. RTE.	SECTION	COUNTY	TOTAL SHEETS	SHEET NO.	
	c:\pw_work\pwt\dot\oxeobj\dms52558\stg2008\d.dgn	DRAWN -	REVISED -			809	67-1HBR	MONROE	144	31	
	PLOT SCALE = 20.0000' / IN.	CHECKED -	REVISED -			CONTRACT NO. 76977					
	PLOT DATE = 12/18/2009	DATE -	REVISED -			FED. ROAD DIST. NO. ILLINOIS FED. AID PROJECT					