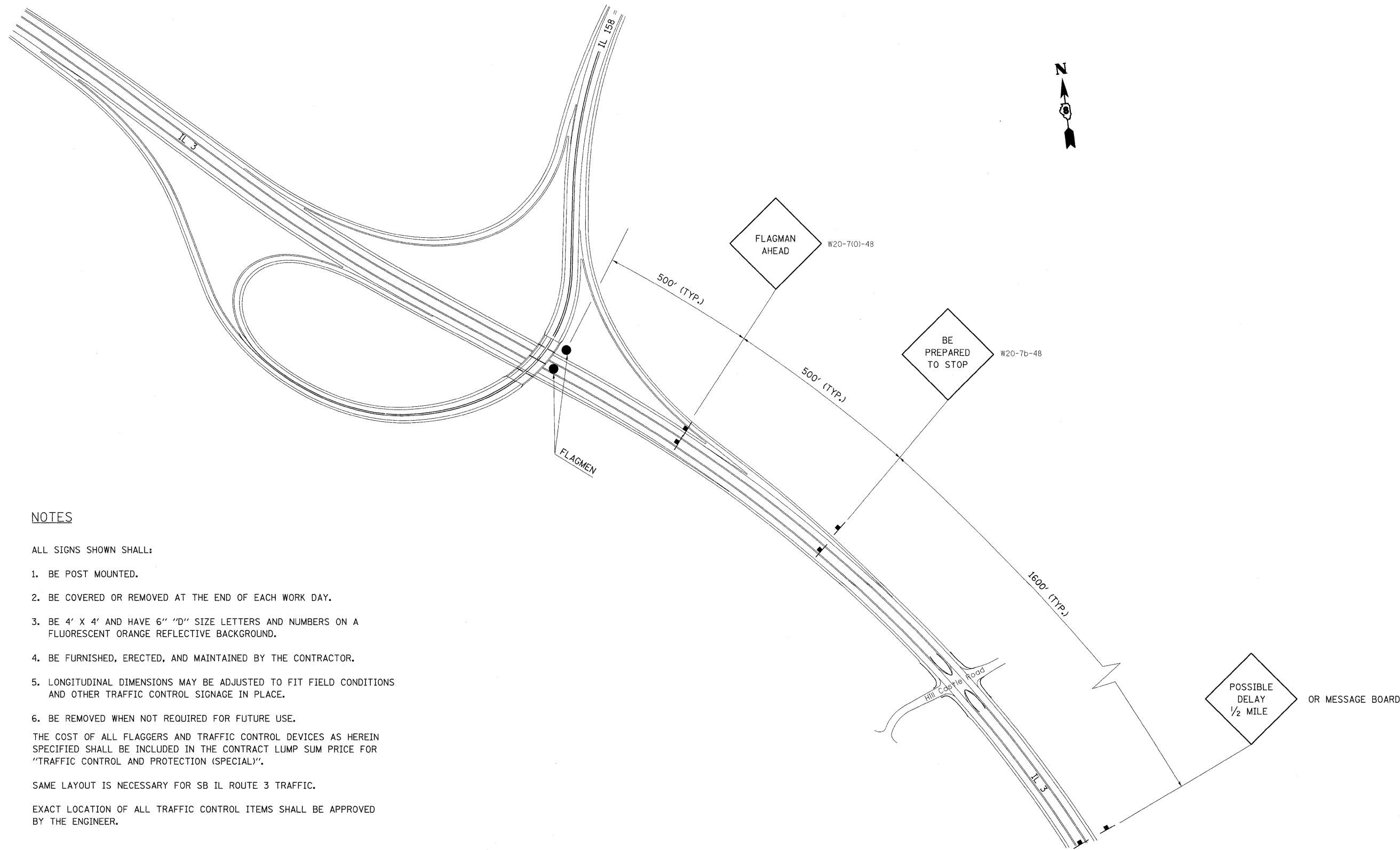


TRAFFIC CONTROL AND PROTECTION FOR STRUCTURAL STEEL ERECTION



NOTES

ALL SIGNS SHOWN SHALL:

1. BE POST MOUNTED.
2. BE COVERED OR REMOVED AT THE END OF EACH WORK DAY.
3. BE 4' X 4' AND HAVE 6" "D" SIZE LETTERS AND NUMBERS ON A FLUORESCENT ORANGE REFLECTIVE BACKGROUND.
4. BE FURNISHED, ERECTED, AND MAINTAINED BY THE CONTRACTOR.
5. LONGITUDINAL DIMENSIONS MAY BE ADJUSTED TO FIT FIELD CONDITIONS AND OTHER TRAFFIC CONTROL SIGNAGE IN PLACE.
6. BE REMOVED WHEN NOT REQUIRED FOR FUTURE USE.

THE COST OF ALL FLAGGERS AND TRAFFIC CONTROL DEVICES AS HEREIN SPECIFIED SHALL BE INCLUDED IN THE CONTRACT LUMP SUM PRICE FOR "TRAFFIC CONTROL AND PROTECTION (SPECIAL)".

SAME LAYOUT IS NECESSARY FOR SB IL ROUTE 3 TRAFFIC.

EXACT LOCATION OF ALL TRAFFIC CONTROL ITEMS SHALL BE APPROVED BY THE ENGINEER.

PLAN	SURVEYED	DATE
NOTE BOOK NO.	ALIGNMENT CHECKED	
	RT. OF WAY CHECKED	
	POD FILE NAME	

PROFILE	SURVEYED	DATE
NOTE BOOK NO.	GRADES CHECKED	
	BLM. NOTED	
	STRUCTURE NOTATIONS CHKD	

FILE NAME =	USER NAME = owenbj	DESIGNED -	REVISED -
c:\pw\work\PWIDOT\OWENBJ\dms52558\stg00026.dgn		DRAWN -	REVISED -
		CHECKED -	REVISED -
		DATE -	REVISED -

STATE OF ILLINOIS
DEPARTMENT OF TRANSPORTATION

TRAFFIC CONTROL PLAN

SCALE: SHEET NO. OF SHEETS STA. TO STA.

F.A.P. RTE.	SECTION	COUNTY	TOTAL SHEETS	SHEET NO.
809	67-1HBR	MONROE	144	34
CONTRACT NO. 76977				
FED. ROAD DIST. NO. ILLINOIS FED. AID PROJECT				