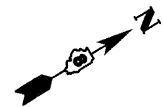


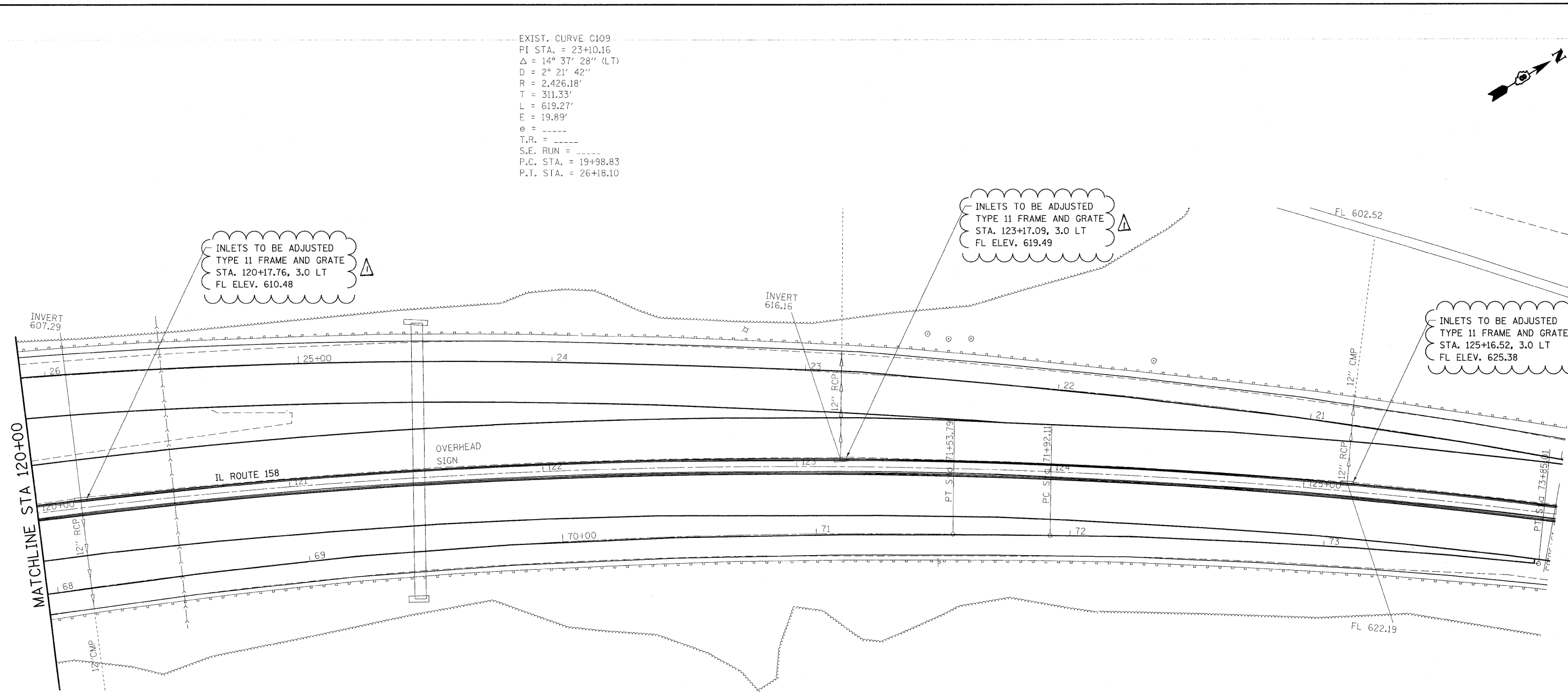
EXIST. CURVE C109  
 PI STA. = 23+10.16  
 $\Delta = 14^\circ 37' 28''$  (LT)  
 $D = 2^\circ 21' 42''$   
 $R = 2,426.18'$   
 $T = 311.33'$   
 $L = 619.27'$   
 $E = 19.89'$   
 $e = \text{-----}$   
 $T.R. = \text{-----}$   
 $S.E. RUN = \text{-----}$   
 $P.C. STA. = 19+98.83$   
 $P.T. STA. = 26+18.10$



INLETS TO BE ADJUSTED  
 TYPE 11 FRAME AND GRATE  
 STA. 120+17.76, 3.0 LT  
 FL ELEV. 610.48

INLETS TO BE ADJUSTED  
 TYPE 11 FRAME AND GRATE  
 STA. 123+17.09, 3.0 LT  
 FL ELEV. 619.49

INLETS TO BE ADJUSTED  
 TYPE 11 FRAME AND GRATE  
 STA. 125+16.52, 3.0 LT  
 FL ELEV. 625.38



EXIST. CURVE C208  
 PI STA. = 68+80.14  
 $\Delta = 14^\circ 13' 45''$  (RT)  
 $D = 2^\circ 35' 11''$   
 $R = 2,215.22'$   
 $T = 276.49'$   
 $L = 550.14'$   
 $E = 17.19'$   
 $e = \text{-----}$   
 $T.R. = \text{-----}$   
 $S.E. RUN = \text{-----}$   
 $P.C. STA. = 66+03.65$   
 $P.T. STA. = 71+53.79$

EXIST. CURVE C2  
 PI STA. = 123+50.42  
 $\Delta = 27^\circ 50' 31''$  (RT)  
 $D = 2^\circ 23' 14''$   
 $R = 2,400.00'$   
 $T = 594.87'$   
 $L = 1,166.24'$   
 $E = 72.62'$   
 $e = \text{-----}$   
 $T.R. = \text{-----}$   
 $S.E. RUN = \text{-----}$   
 $P.C. STA. = 117+55.54$   
 $P.T. STA. = 129+21.79$

EXIST. CURVE C209  
 PI STA. = 72+88.62  
 $\Delta = 4^\circ 54' 50''$  (RT)  
 $D = 2^\circ 32' 51''$   
 $R = 2,249.13'$   
 $T = 96.51'$   
 $L = 192.90'$   
 $E = 2.07'$   
 $e = \text{-----}$   
 $T.R. = \text{-----}$   
 $S.E. RUN = \text{-----}$   
 $P.C. STA. = 71+92.11$   
 $P.T. STA. = 73+85.01$

FILE NAME =	USER NAME = owerb_j	DESIGNED -	REVISED -	<b>STATE OF ILLINOIS DEPARTMENT OF TRANSPORTATION</b>	<b>DRAINAGE PLAN</b>			F.A.P. RTE.	SECTION	COUNTY	TOTAL SHEETS	SHEET NO.
ca:\pwwork\pwwork\owenb_j\dms52558\pin00026a.dgn		DRAWN -	REVISED -					809	67-1HBR	MONROE	144	51
PLOT SCALE = 20,0000' / IN.		CHECKED -	REVISED -					CONTRACT NO. 76977				
PLOT DATE = 2/5/2010		DATE -	REVISED -					ILLINOIS FED. AID PROJECT				
				SCALE:	SHEET NO.	OF	SHEETS	STA.	TO	STA.		

Rev. 2-11-10