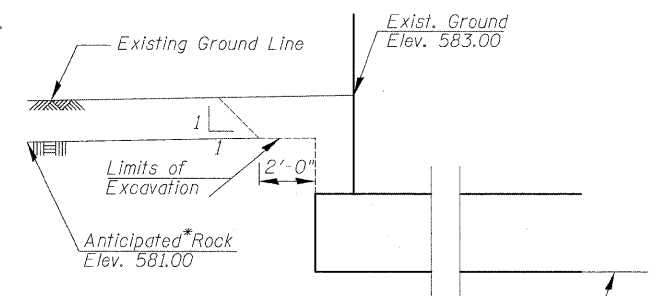
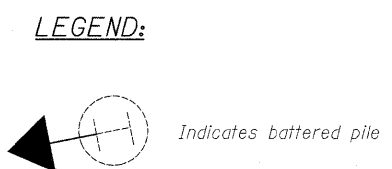
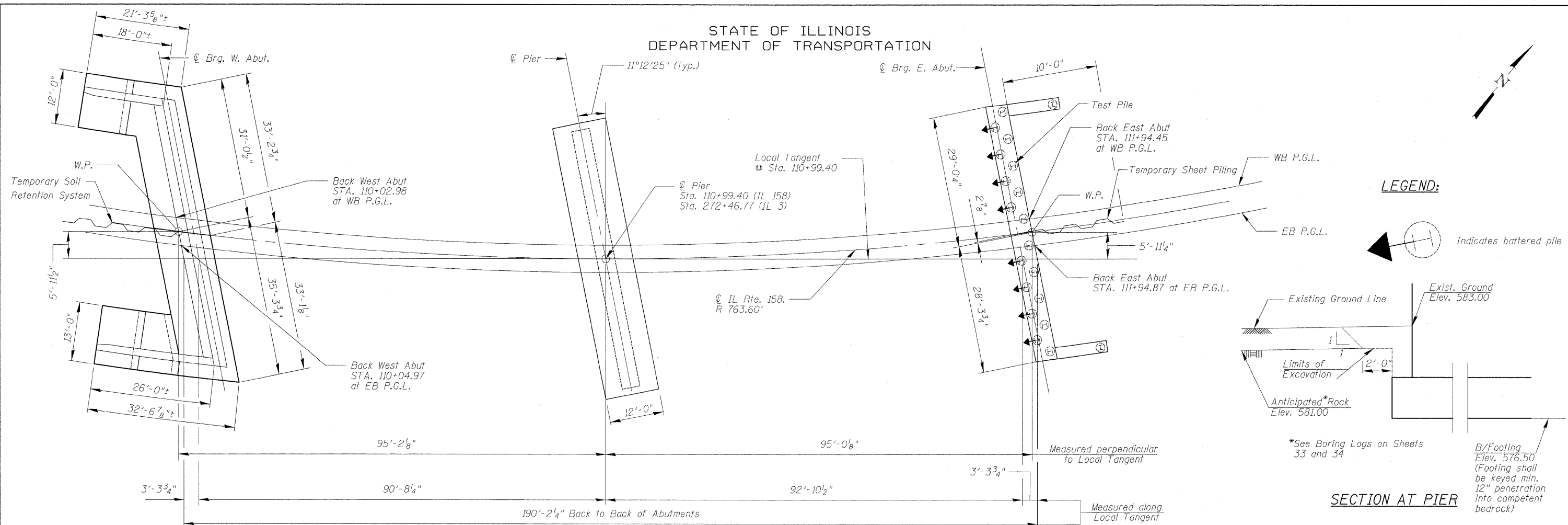
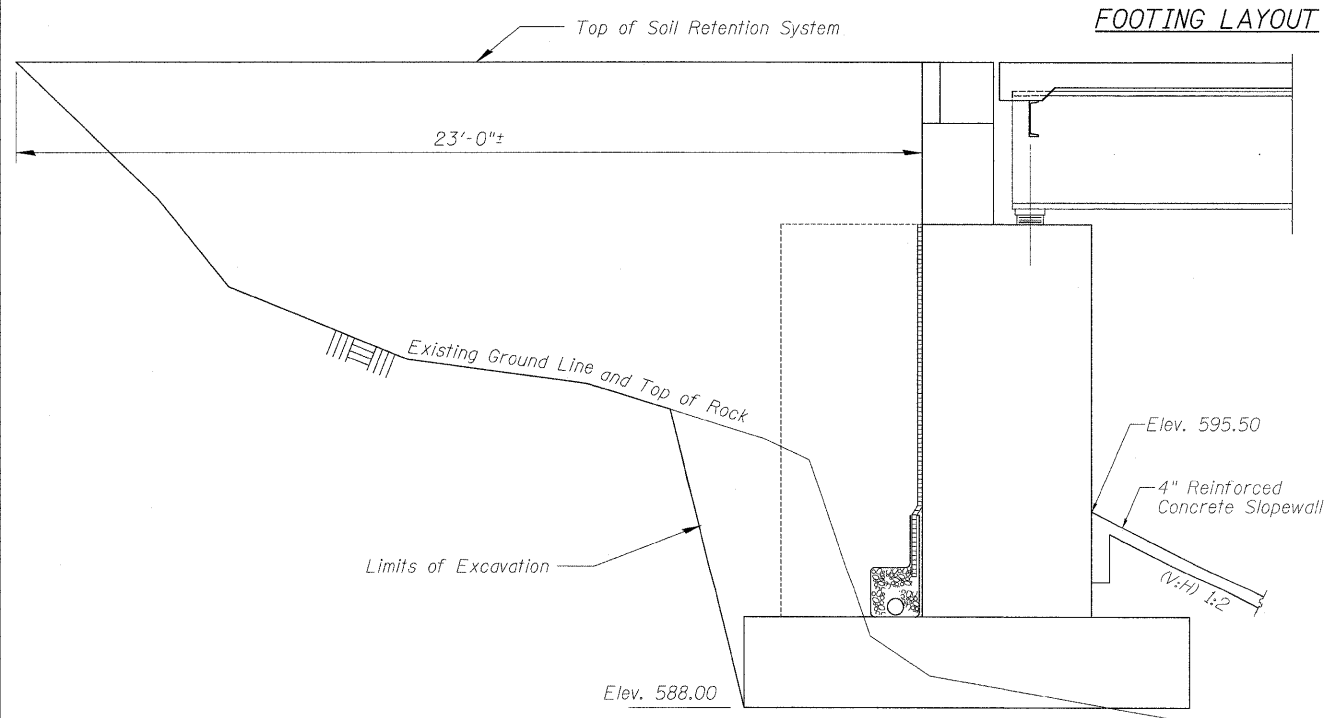


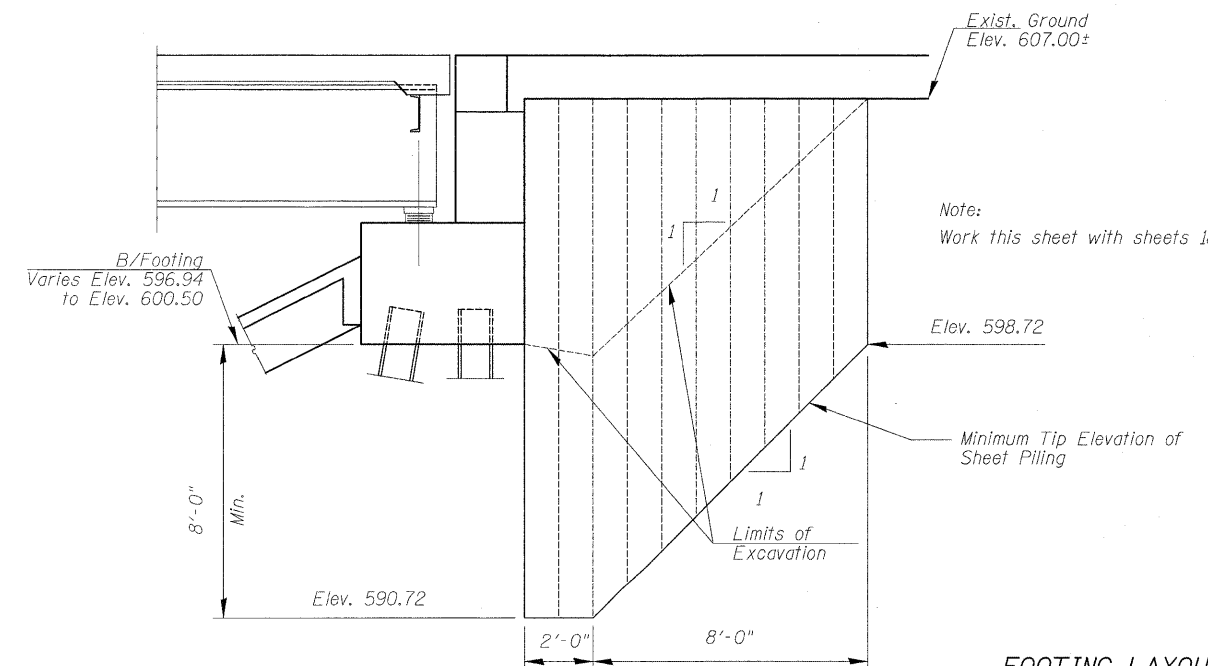
STATE OF ILLINOIS
DEPARTMENT OF TRANSPORTATION



FOOTING LAYOUT



SECTION AT WEST ABUTMENT



SECTION AT EAST ABUTMENT
TEMPORARY SHEET PILING DETAILS

FOOTING LAYOUT & TEMPORARY SHEET PILING DETAILS
STRUCTURE NO. 067-0042

DESIGNED - JPM
CHECKED - CCS
DRAWN - JPM
CHECKED - WPM, CCS
9-28-09



TEMPORARY SOIL RETENTION SYSTEM
Notes:
A cantilevered sheet piling design does not appear feasible and additional members or other retention systems may be necessary. The Contractor shall submit a temporary soil retention system design including plan details and calculations for review and acceptance by the Engineer.

Notes:
If the Contractor chooses to alter the temporary cantilevered sheet piling requirements shown on the plans, a design submittal including plan details and calculations will be required for review and acceptance by the Engineer.
Contractor shall investigate existing buried utility line or structure before installing sheet piling.

Minimum Section Modulus = 14.6 in³/ft.

SHEET NO. 4 34 SHEETS	F.A.P. RTE.	SECTION	COUNTY	TOTAL SHEETS	SHEET NO.
	809	67-1HBR	Monroe	144	68
CONTRACT NO. 76977					
FED. ROAD DIST. NO. 7 ILLINOIS FED. AID PROJECT					