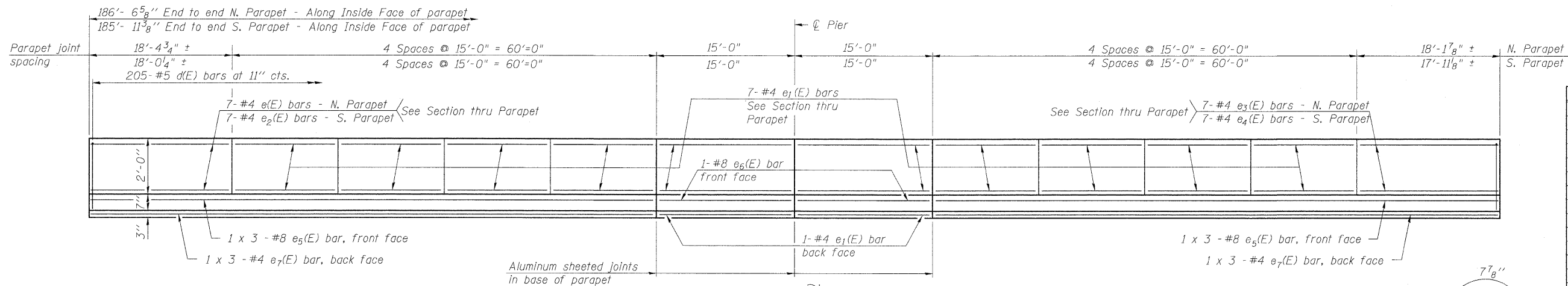


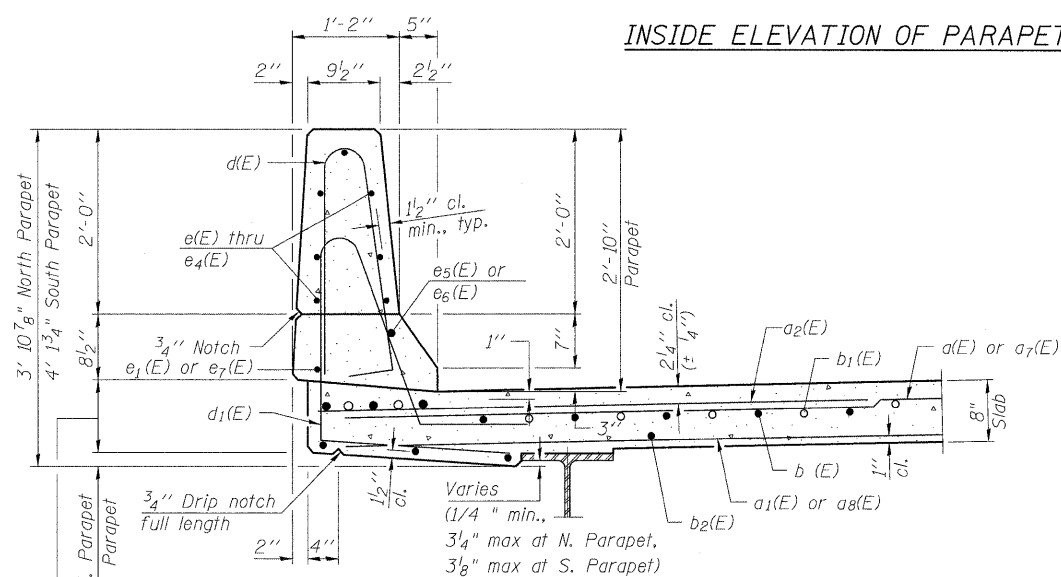
STATE OF ILLINOIS
DEPARTMENT OF TRANSPORTATION



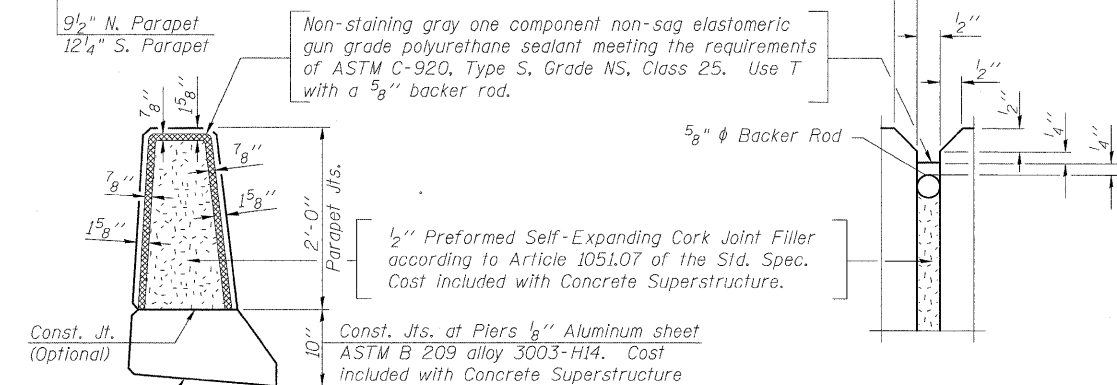
**SUPERSTRUCTURE
BILL OF MATERIAL**

Bar	No.	Size	Length	Shape
a(E)	422	#5	30'-5"	—
a ₁ (E)	266	#5	30'-2"	—
a ₂ (E)	406	#6	6'-0"	—
a ₃ (E)	4	#7	32'-0"	—
a ₄ (E)	4	#7	30'-5"	—
a ₅ (E)	1	#6	31'-10"	—
a ₆ (E)	1	#6	30'-3"	—
a ₇ (E)	401	#5	28'-2"	—
a ₈ (E)	253	#5	27'-11"	—
a ₉ (E)	4	#7	29'-4"	—
a ₁₀ (E)	4	#7	28'-2"	—
a ₁₁ (E)	1	#6	29'-2"	—
a ₁₂ (E)	1	#6	28'-0"	—
a ₁₃ (E)	18	#6	8'-9"	U
a ₁₄ (E)	18	#6	8'-5"	U
a ₁₅ (E)	3	#6	7'-4"	U
a ₁₆ (E)	3	#6	7'-0"	U
b(E)	372	#5	32'-11"	—
b ₁ (E)	58	#6	44'-0"	—
b ₂ (E)	420	#5	28'-6"	—
c ₁ (E)	187	#5	3'-7"	L
c ₂ (E)	187	#5	6'-1"	L
d(E)	410	#5	5'-7"	L
d ₁ (E)	410	#5	7'-7"	L
e(E)	7	#4	18'-2"	—
e ₁ (E)	144	#4	14'-9"	—
e ₂ (E)	7	#4	17'-8"	—
e ₃ (E)	7	#4	17'-11"	—
e ₄ (E)	7	#4	17'-9"	—
e ₅ (E)	12	#8	29'-2"	—
e ₆ (E)	4	#8	14'-9"	—
e ₇ (E)	12	#4	27'-3"	—
x ₁ (E)	94	#5	5'-11"	L
Reinforcement Bars, Epoxy Coated			Pound	86,500
Concrete Superstructure			Cu. Yd.	378

INSIDE ELEVATION OF PARAPET



SECTION THRU PARAPET

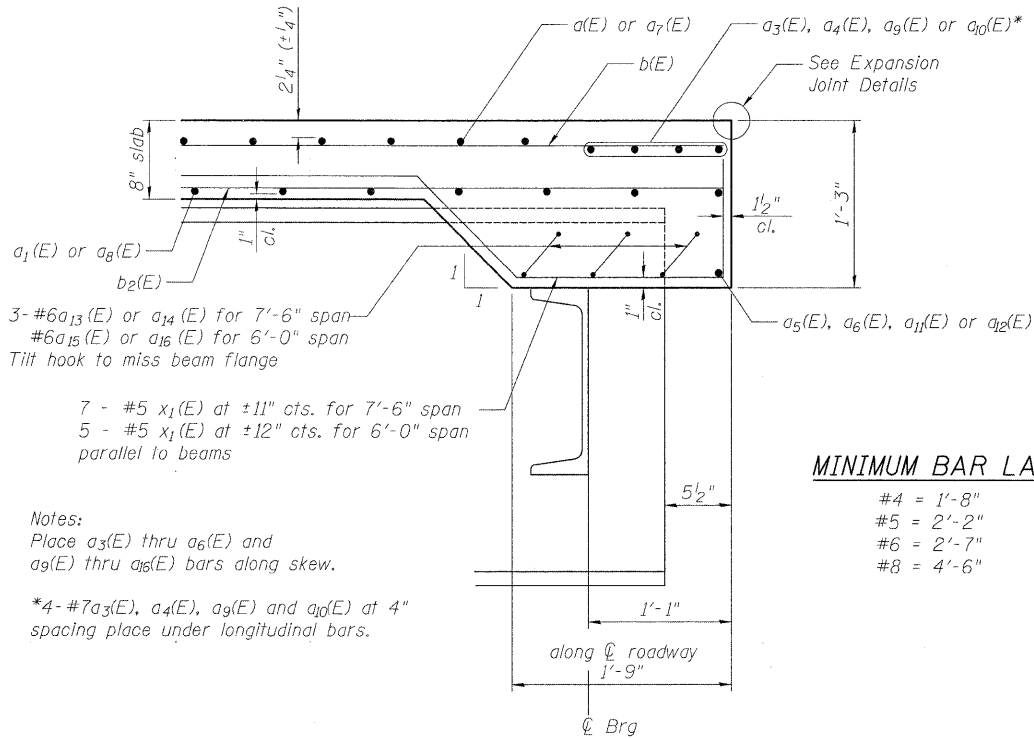


PARAPET JOINT DETAILS

DESIGNED - JPM
CHECKED - CCS
DRAWN - GAP
CHECKED - JPM, WPM



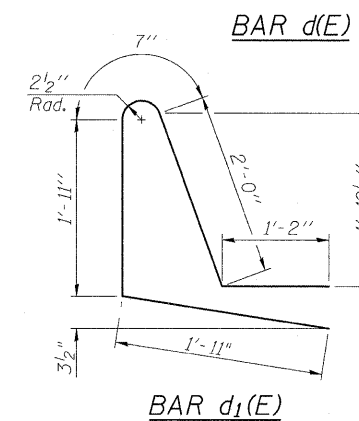
9-28-09



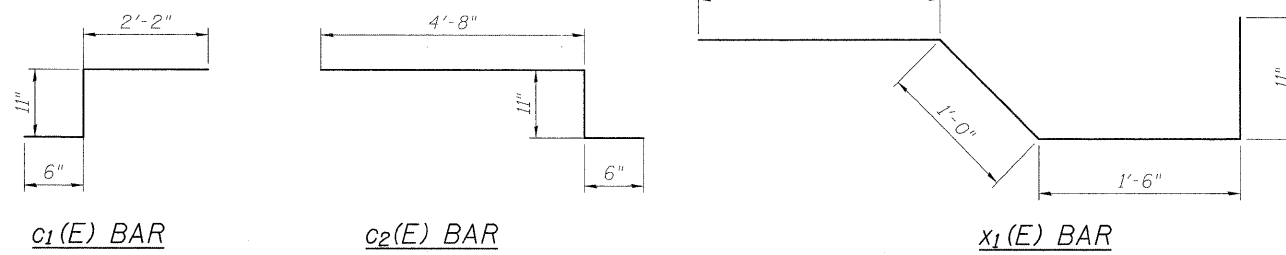
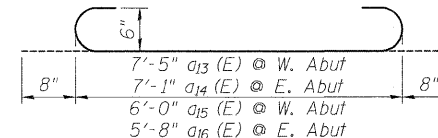
SECTION A-A

MINIMUM BAR LAP

- #4 = 1'-8"
- #5 = 2'-2"
- #6 = 2'-7"
- #8 = 4'-6"



a₃(E) & a₄(E) BAR



**SUPERSTRUCTURE DETAILS
STRUCTURE NO. 067-0042**

SHEET NO. 11 34 SHEETS	F.A.P. RTE.	SECTION	COUNTY	TOTAL SHEETS	SHEET NO.
	809	67-1HBR	Monroe	144	75
CONTRACT NO. 76977					
FED. ROAD DIST. NO. 7 ILLINOIS FED. AID PROJECT					

- Notes:
1. Bars indicated thus 54 x 6 - #5 etc. indicates 54 line of bars with 6 lengths per line.
 2. Straight bars shall be bent in field to conform to deck radius and or cross slopes as applicable.