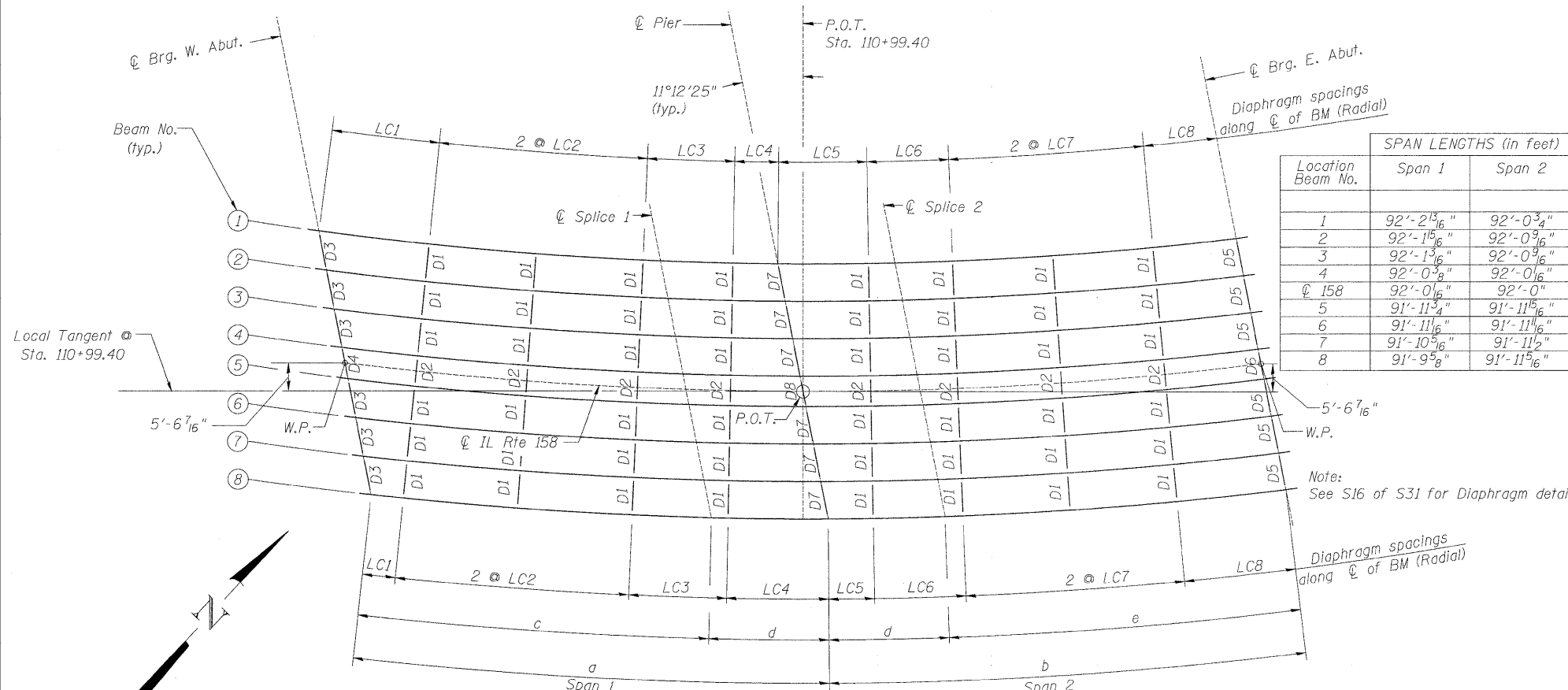


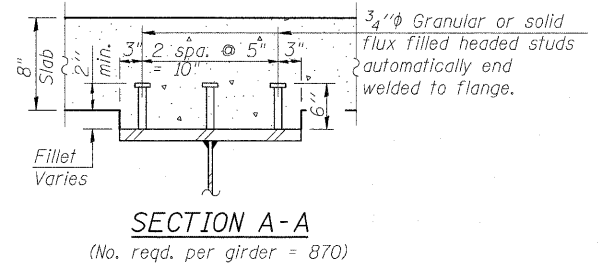
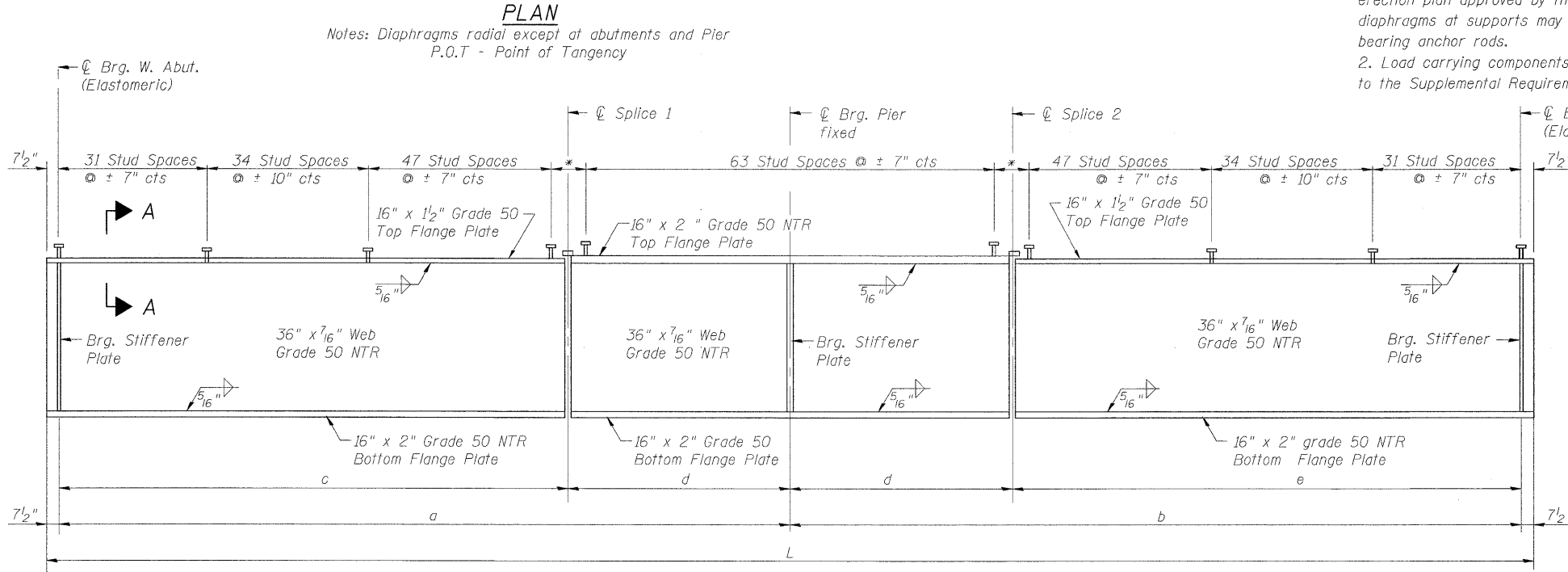
STATE OF ILLINOIS
DEPARTMENT OF TRANSPORTATION



Location Beam No.	SPAN LENGTHS (in feet)		DIAPHRAGM SPACINGS							
	Span 1	Span 2	SPAN 1 (in feet)				SPAN 2 (in feet)			
			LC1	LC2	LC3	LC4	LC5	LC6	LC7	LC8
1	92'-2 ³ / ₁₆ "	92'-0 ³ / ₄ "	22'-2 ³ / ₁₆ "	21'-6"	18'-0"	9'-0"	18'-2 ³ / ₈ "	16'-10 ¹ / ₁₆ "	20'-1 ⁵ / ₁₆ "	16'-9 ³ / ₄ "
2	92'-1 ¹ / ₁₆ "	92'-0 ⁹ / ₁₆ "	19'-10 ⁵ / ₁₆ "	21'-8 ⁵ / ₁₆ "	18'-2 ³ / ₁₆ "	10'-7 ⁹ / ₁₆ "	16'-10 ¹ / ₁₆ "	17'-0 ¹ / ₈ "	20'-3 ³ / ₄ "	17'-6 ³ / ₄ "
3	92'-1 ³ / ₁₆ "	92'-0 ⁹ / ₁₆ "	17'-7 ⁸ / ₁₆ "	21'-1 ¹ / ₄ "	18'-4 ³ / ₈ "	12'-3 ¹ / ₁₆ "	15'-5 ⁸ / ₁₆ "	17'-2 ¹ / ₈ "	20'-6 ¹ / ₄ "	18'-3 ¹ / ₈ "
4	92'-0 ³ / ₈ "	92'-0 ¹ / ₁₆ "	15'-3 ³ / ₈ "	22'-1 ¹ / ₈ "	18'-6 ³ / ₁₆ "	13'-10 ¹ / ₁₆ "	14'-1 ⁵ / ₈ "	17'-4 ³ / ₁₆ "	20'-8 ¹ / ₁₆ "	19'-0 ¹ / ₈ "
5	92'-0 ¹ / ₁₆ "	92'-0"								
6	91'-11 ³ / ₄ "	91'-11 ¹ / ₁₆ "	13'-5 ¹ / ₁₆ "	22'-3 ¹ / ₁₆ "	18'-8 ⁵ / ₁₆ "	15'-2 ⁵ / ₁₆ "	13'-0 ⁵ / ₈ "	17'-5 ⁷ / ₈ "	20'-10 ⁵ / ₈ "	19'-8 ¹ / ₁₆ "
7	91'-11 ¹ / ₁₆ "	91'-11 ¹ / ₁₆ "	11'-1 ¹ / ₂ "	22'-6 ⁹ / ₁₆ "	18'-10 ⁹ / ₁₆ "	16'-9 ⁹ / ₁₆ "	11'-8 ¹ / ₁₆ "	17'-7 ⁷ / ₈ "	21'-1 ¹ / ₁₆ "	20'-5 ¹ / ₁₆ "
8	91'-10 ⁹ / ₁₆ "	91'-11 ¹ / ₁₆ "	8'-9 ³ / ₄ "	22'-9 ³ / ₁₆ "	19'-0 ³ / ₄ "	18'-5 ³ / ₈ "	10'-4 ³ / ₁₆ "	17'-9 ¹ / ₁₆ "	21'-3 ⁹ / ₁₆ "	21'-2 ¹ / ₄ "
8	91'-9 ⁵ / ₈ "	91'-11 ⁵ / ₁₆ "	6'-6 ¹ / ₈ "	22'-11 ¹ / ₁₆ "	19'-2 ¹ / ₁₆ "	20'-0 ¹ / ₁₆ "	9'-0"	18'-0"	21'-6"	21'-11 ⁵ / ₁₆ "

Beam No.	BEAM DIMENSIONS (in feet)						
	Radius	a	b	c	d	e	L
1	738'-1 ³ / ₁₆ "	92'-2 ³ / ₁₆ "	92'-0 ³ / ₄ "	73'-9 ¹ / ₁₆ "	18'-5"	73'-7 ³ / ₄ "	185'-6 ⁹ / ₁₆ "
2	745'-7 ³ / ₁₆ "	92'-1 ¹ / ₁₆ "	92'-0 ⁹ / ₁₆ "	73'-8 ⁵ / ₁₆ "	18'-5"	73'-7 ⁹ / ₁₆ "	185'-5 ¹ / ₁₆ "
3	753'-1 ³ / ₁₆ "	92'-1 ³ / ₁₆ "	92'-0 ⁹ / ₁₆ "	73'-8 ³ / ₁₆ "	18'-5"	73'-7 ⁵ / ₁₆ "	185'-4 ¹ / ₂ "
4	760'-7 ³ / ₁₆ "	92'-0 ³ / ₈ "	92'-0 ¹ / ₁₆ "	73'-7 ³ / ₁₆ "	18'-5"	73'-7 ¹ / ₁₆ "	185'-3 ¹ / ₁₆ "
5	766'-7 ³ / ₁₆ "	91'-11 ³ / ₄ "	91'-11 ¹ / ₁₆ "	73'-6 ³ / ₁₆ "	18'-5"	73'-6 ¹ / ₁₆ "	185'-2 ¹ / ₁₆ "
6	774'-1 ³ / ₁₆ "	91'-11 ¹ / ₁₆ "	91'-11 ¹ / ₁₆ "	73'-6 ¹ / ₁₆ "	18'-5"	73'-6 ¹ / ₁₆ "	185'-1 ³ / ₄ "
7	781'-7 ³ / ₁₆ "	91'-10 ⁹ / ₁₆ "	91'-11 ¹ / ₁₆ "	73'-5 ⁹ / ₁₆ "	18'-5"	73'-6 ¹ / ₁₆ "	185'-0 ¹ / ₁₆ "
8	789'-1 ³ / ₁₆ "	91'-9 ⁵ / ₈ "	91'-11 ⁵ / ₁₆ "	73'-4 ⁵ / ₈ "	18'-5"	73'-6 ¹ / ₁₆ "	184'-11 ⁵ / ₁₆ "

- Notes:
- All cross frames or diaphragms between beams or girders shall be installed with erection pins and bolts in accordance with the erection plan approved by the Engineer. Individual cross frames or diaphragms at supports may be temporarily disconnected to install bearing anchor rods.
 - Load carrying components designated "NTR" shall conform to the Supplemental Requirements for Notch Toughness, Zone 2.



FRAMING PLAN
STRUCTURE NO. 067-0042

GIRDER ELEVATION

"NTR" denotes plates to which notch toughness requirements are applicable.

* There shall be no Shear Studs within 3" of the centerline of the splice

DESIGNED - JPM
CHECKED - WPM
DRAWN - MD
CHECKED - JPM, CCS



9-28-09

SHEET NO. 13 34 SHEETS	F.A.P. RTE.	SECTION	COUNTY	TOTAL SHEETS	SHEET NO.
	809	67-1HBR	Monroe	144	77
CONTRACT NO. 76977					
FED. ROAD DIST. NO. 7 ILLINOIS FED. AID PROJECT					