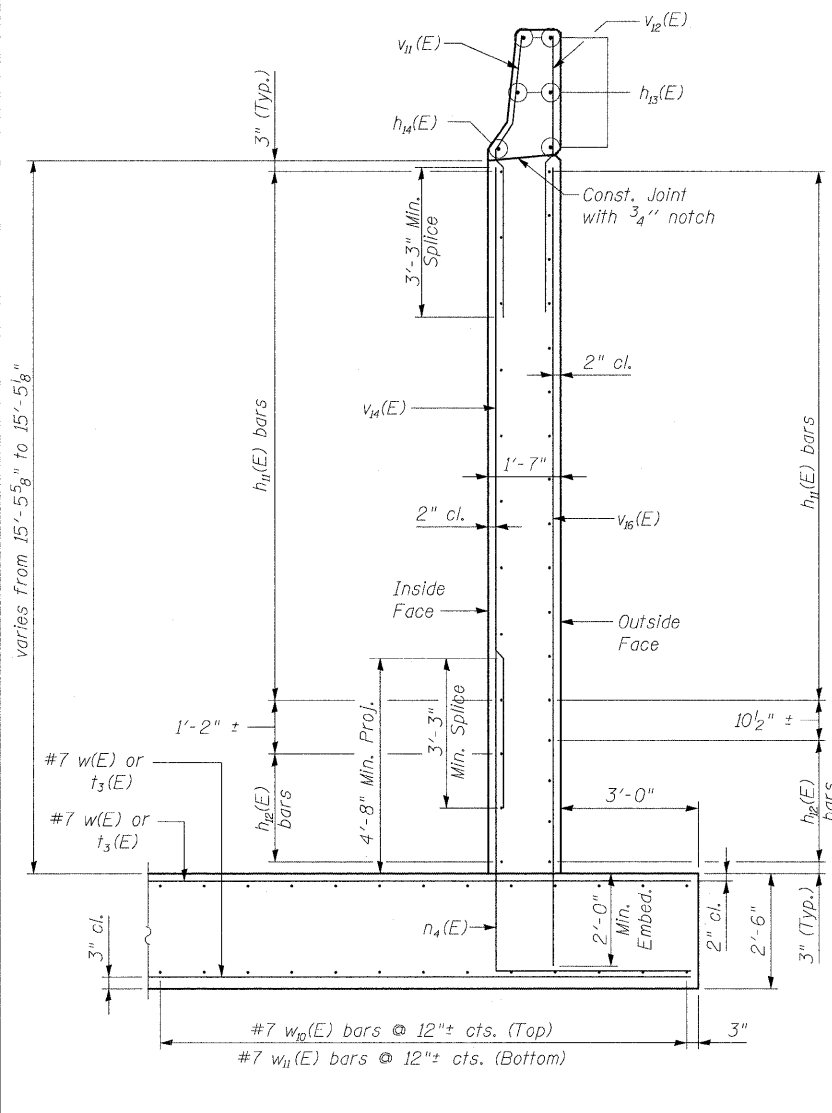


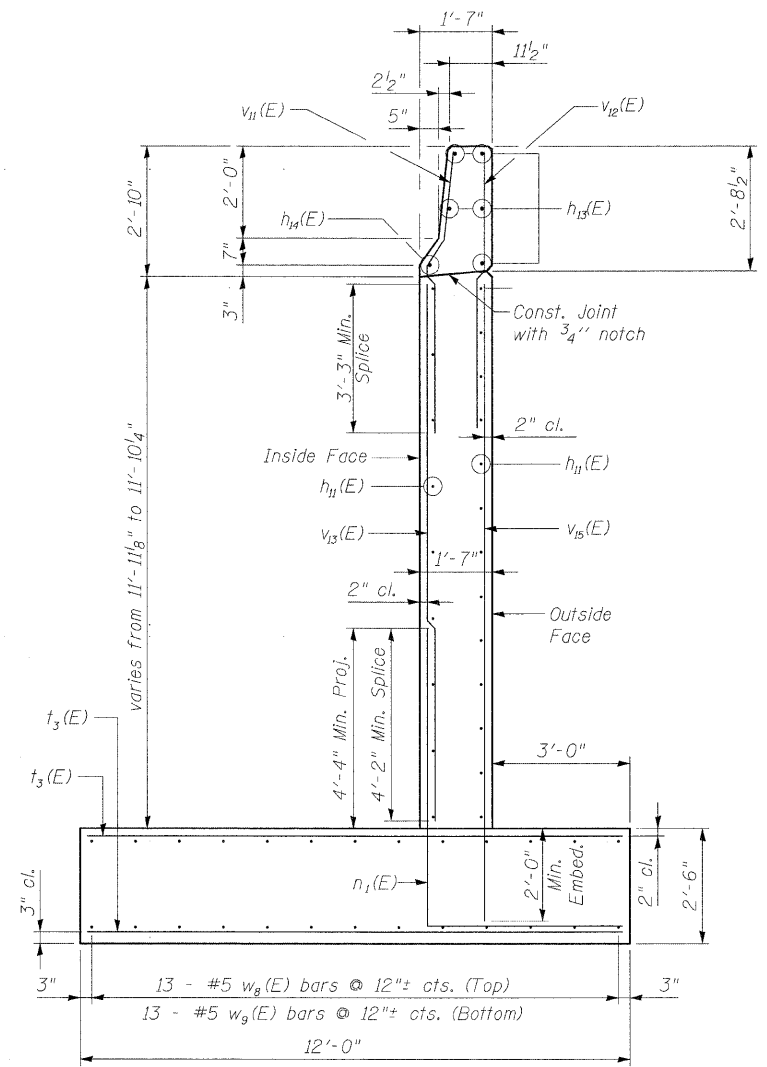
STATE OF ILLINOIS  
DEPARTMENT OF TRANSPORTATION

ABUTMENT  
BILL OF MATERIAL

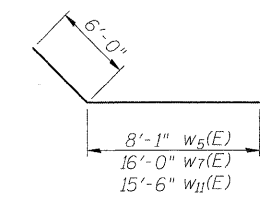
Bar	No.	Size	Length	Shape
h1(E)	42	#5	28'-5"	—
h2(E)	34	#5	29'-8"	—
h3(E)	8	#5	15'-9"	—
h4(E)	8	#5	15'-3"	—
h5(E)	8	#5	7'-4"	—
h6(E)	10	#6	28'-5"	—
h7(E)	22	#5	26'-2"	—
h8(E)	7	#5	17'-7"	—
h9(E)	7	#5	10'-7"	—
h10(E)	5	#4	26'-2"	—
h11(E)	1	#4	26'-0"	—
h12(E)	22	#5	17'-8"	—
h13(E)	7	#5	6'-11"	—
h14(E)	5	#4	17'-8"	—
h15(E)	1	#4	17'-11"	—
n1(E)	164	#8	8'-8"	—
n2(E)	27	#8	10'-9"	—
n3(E)	13	#9	10'-9"	—
n4(E)	21	#10	12'-1"	—
n5(E)	15	#8	11'-1"	—
v1(E)	88	#7	12'-0"	—
v2(E)	66	#7	12'-8"	—
v3(E)	4	#5	12'-8"	—
v4(E)	41	#7	11'-8"	—
v5(E)	2	#5	11'-8"	—
v6(E)	82	#8	10'-10"	—
v7(E)	82	#8	12'-6"	—
v8(E)	77	#6	14'-4"	—
v9(E)	58	#5	3'-4"	—
v10(E)	58	#5	8'-1"	—
v11(E)	12	#7	12'-2"	—
v12(E)	13	#7	15'-9"	—
v13(E)	21	#8	19'-2"	—
v14(E)	10	#5	14'-2"	—
v15(E)	8	#5	17'-9"	—
v16(E)	11	#5	21'-2"	—
v17(E)	40	#6	6'-4"	—
v18(E)	46	#6	6'-0"	—
v19(E)	15	#7	11'-8"	—
v20(E)	15	#6	14'-3"	—
v21(E)	12	#5	13'-8"	—
v22(E)	8	#5	17'-4"	—
v23(E)	4	#6	12'-4"	—
v24(E)	58	#5	6'-2"	—
v25(E)	6	#6	5'-5"	—
v26(E)	48	#7	32'-11"	—
v27(E)	48	#7	32'-9"	—
v28(E)	14	#5	13'-9"	—
v29(E)	14	#5	8'-3"	—
v30(E)	14	#5	14'-7"	—
v31(E)	14	#5	14'-1"	—
v32(E)	14	#7	16'-6"	—
v33(E)	14	#7	22'-0"	—
v34(E)	13	#5	15'-11"	—
v35(E)	13	#5	10'-5"	—
v36(E)	13	#7	16'-0"	—
v37(E)	13	#7	21'-6"	—
Rock Excavation For Structures	Cu. Yd.	227		
Concrete Structures	Cu. Yd.	318		
Reinforcement Bars, Epoxy Coated	Pound	37,695		
Concrete Sealer	Sq. Ft.	904		



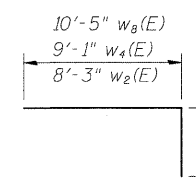
SECTION A-A



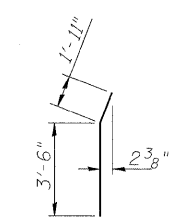
SECTION B-B



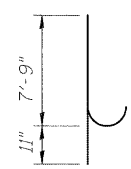
BAR w5(E), w7(E), & w11(E)



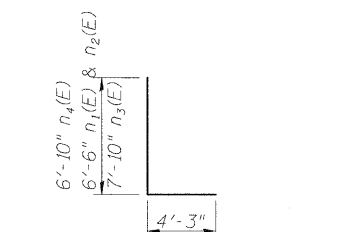
BAR w2(E), w4(E), & w8(E)



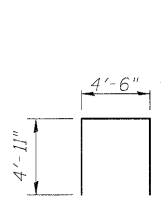
BAR v19(E)



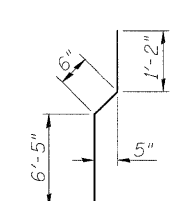
BAR n(E)



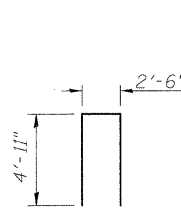
BAR n11(E), n2(E), n3(E), & n4(E)



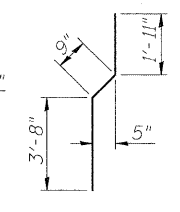
BAR v2(E)



BAR v4(E)



BAR v17(E)



BAR v11(E)

- \* Cut bars in field to fit
- \*\* Bend bars in field to fit
- \*\*\* Cut and bend bars in field to fit

Notes:  
1. Work this sheet with sheets 18 & 21 of 34.

DESIGNED	- CCS
CHECKED	- WPM
DRAWN	- GAP
CHECKED	- CCS



NORTHWEST WINGWALL DETAILS II  
STRUCTURE NO. 067-0042

SHEET NO. 22 34 SHEETS	F.A.P. RTE.	SECTION	COUNTY	TOTAL SHEETS	SHEET NO.
	809	67-1HBR	Monroe	144	86
CONTRACT NO. 76977					
FED. ROAD DIST. NO. 7 ILLINOIS FED. AID PROJECT					