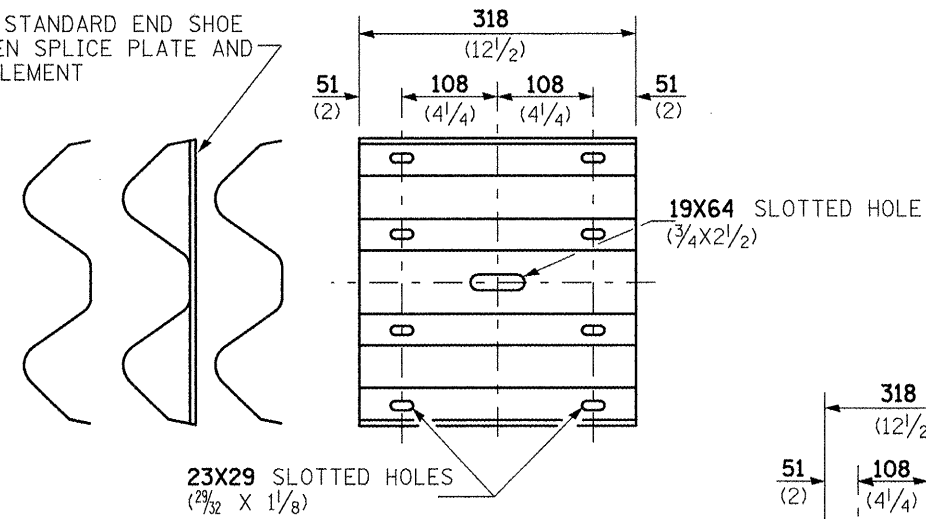
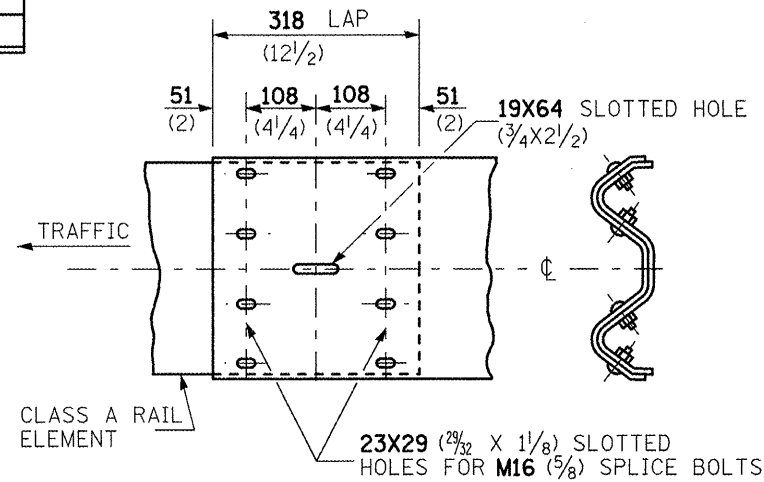


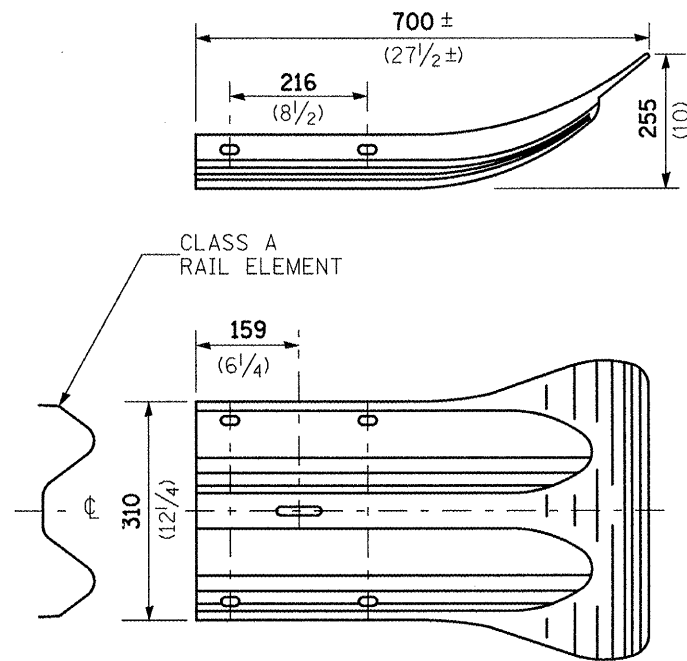
PLACE STANDARD END SHOE BETWEEN SPLICE PLATE AND RAIL ELEMENT



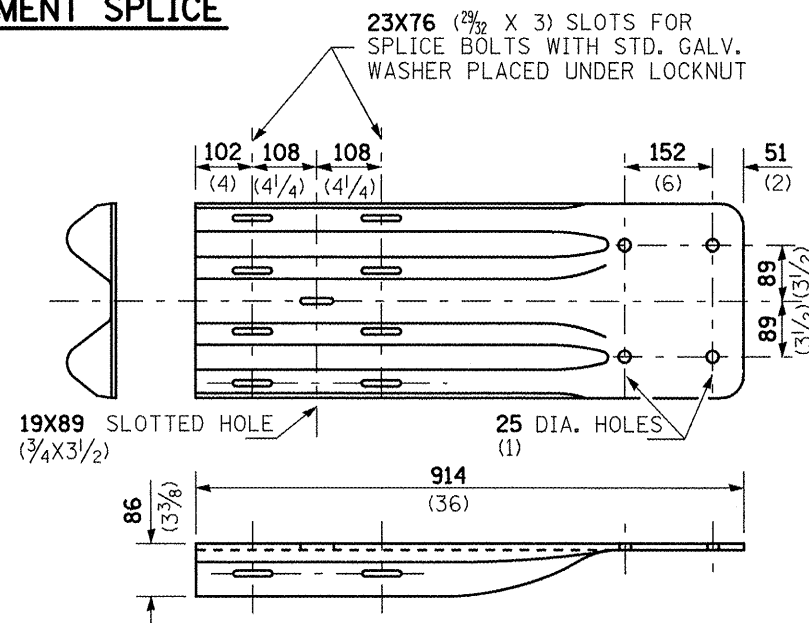
**SPLICE PLATE**



**RAIL ELEMENT SPLICE**



**END SECTION**



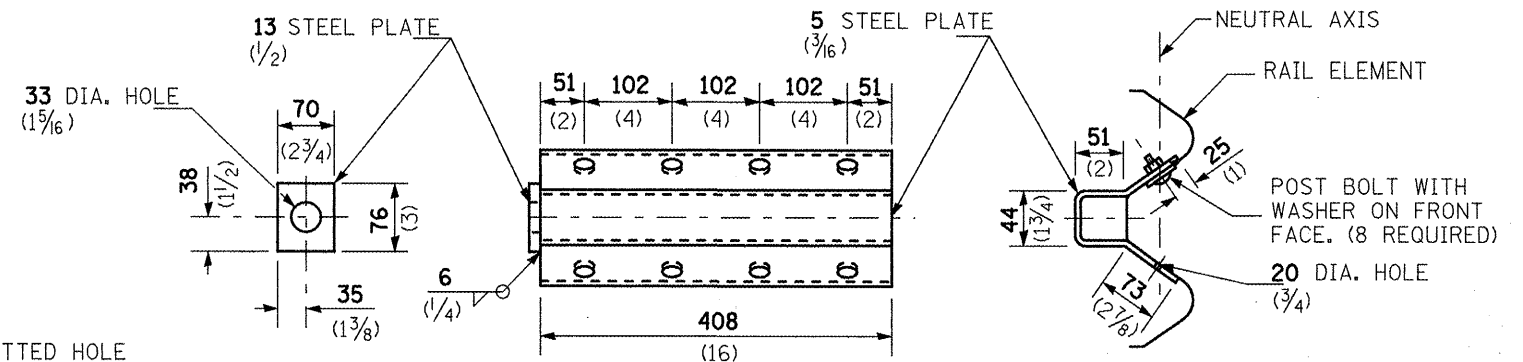
NOTE

WHEN END SHOE IS ATTACHED TO A BRIDGE PARAPET WHICH HAS AN EXPANSION JOINT, THE BOLTS SHALL BE PROVIDED WITH A LOCKNUT OR DOUBLE NUT AND SHALL BE TIGHTENED ONLY TO A POINT THAT WILL ALLOW GUARDRAIL MOVEMENT.

THE STANDARD END SHOE SHALL BE ATTACHED TO THE CONCRETE WITH PRE-DRILLED OR SELF-DRILLING ANCHOR BOLTS. THE ANCHOR CONE SHALL BE SET FLUSH WITH THE SURFACE OF THE CONCRETE.

EXTERNALLY THREADED STUDS PROTRUDING FROM THE SURFACE OF THE CONCRETE WILL NOT BE PERMITTED.

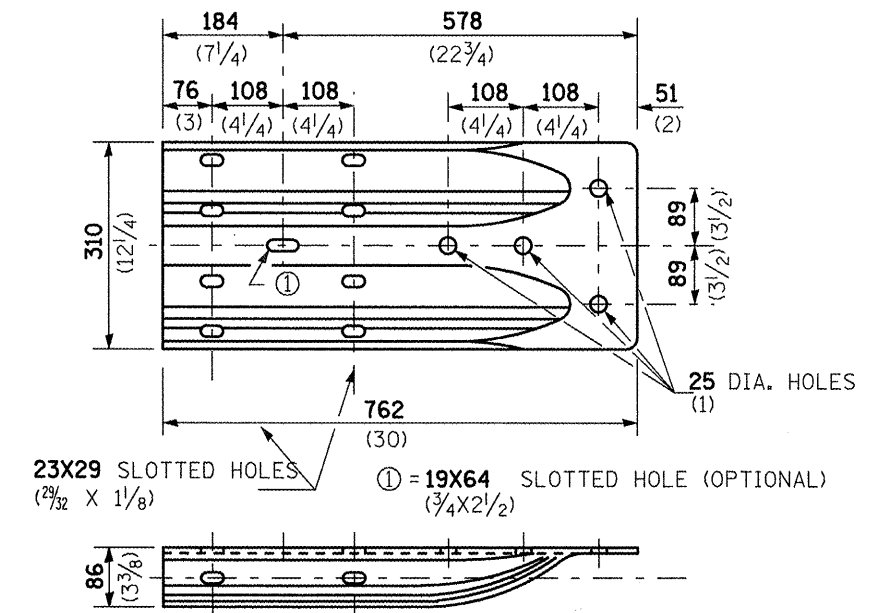
**END SHOE**



NOTE

ANCHOR PLATE T SHALL BE USED TO ATTACH CABLE ASSEMBLY TO GUARDRAIL WHEN REQUIRED ON TRAFFIC BARRIER TERMINALS.

**ANCHOR PLATE T DETAILS**



**ALTERNATE END SHOE**

FILE NAME =	USER NAME = oconoverp	DESIGNED -	REVISED -	<b>STATE OF ILLINOIS DEPARTMENT OF TRANSPORTATION</b>	<b>REMOVE AND REERECT STEEL PLATE BEAM GUARDRAIL DETAIL</b>	F.A. RTE.	SECTION	COUNTY	TOTAL SHEETS	SHEET NO.	
ot\pwwork\pwwid\DOT\CONOVERP\J\d0119570\d0119570.dgn	76b75-eh-t-plan.dgn	DRAWN -	REVISED -			•	106,107,108,109RS-3	MARION	47	36	
PLOT SCALE = 1/8" = 1'-0"		CHECKED -	REVISED -			<b>CONTRACT NO. T6B75</b>					
PLOT DATE = 1/15/2010		DATE -	REVISED -			FED. ROAD DIST. NO. ILLINOIS FED. AID PROJECT					

•FAS 2826/FAU 8565

SCALE: SHEET NO. 2 OF 3 SHEETS STA. TO STA.