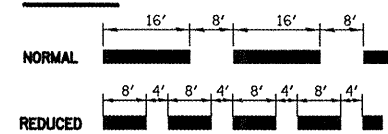


**NOTES**

1. PAINT CURB AND NOSE SOLID FOR 10 FEET OR RADIUS OF NOSE, WHICHEVER IS GREATER.
2. PAINT MINIMUM OF 3 STRIPES IN DIRECTION OF TRAFFIC.
3. REDUCED SPACING USED TO OBTAIN 3 STRIPS MINIMUM.
4. STRIPING RECOMMENDED ONLY WHERE OPERATIONAL PROBLEMS DICTATE.
5. PAINT SOLID WHERE A MINIMUM OF 3 STRIPES CANNOT BE PLACED.

**SPACING**



**CURB MARKING**

FILE NAME =	USER NAME = conoverpj	DESIGNED -	REVISED -	<b>STATE OF ILLINOIS DEPARTMENT OF TRANSPORTATION</b>	<b>PAVEMENT MARKING DETAILS</b>			F.A. RTE.	SECTION	COUNTY	TOTAL SHEETS	SHEET NO.
ct\pw_work\PWIDOT\CONOVERPJ\d0119570\d0119570-6b75-sht-plan.dgn		DRAWN -	REVISED -		SCALE	SHEET NO. 3 OF 3 SHEETS	STA.	TO STA.	(106,107,108,109)RS-3	MARION	47	42
		CHECKED -	REVISED -									
		DATE -	REVISED -									
	PLOT SCALE = 100.0000 / / IN.							<b>CONTRACT NO. 76875</b>				
	PLOT DATE = 1/15/2010							FED. ROAD DIST. NO. ILLINOIS FED. AID PROJECT				